

CATALOG NUMBER	STRANDED COPPER CONDUCTOR ACCOMMODATED			BOLT SIZE	METRIC BOLT SIZE	FIG. NO.	DIMENSIONS								
	CODE (AWG)	NAVY	METRIC SIZE (CLASS 2)				B	C	H REF.	K DIA.	L	N	O.D.	T REF.	Z MIN.
YA4CTC3845	#4 AWG	40	-----	3/8	-----	1	1.12 [28]	.58 [15]	1.25 [32]	.40 [10]	2.02 [51]	.41 [10]	.34 [9]	.08 [2]	.42 [11]
2						.58 [15]	1.53 [39]	.40 [10]	1.08 [27]	.41 [10]	.08 [2]	.42 [11]			
YA4CN45				1/2	M12	1	.83 [21]	1.37 [35]	.56 [14]	2.66 [68]	.63 [16]	.12 [3]	.64 [16]		
2						1.12 [28]	.83 [21]	1.76 [45]	.56 [14]	1.54 [39]	.63 [16]	.12 [3]	.64 [16]		

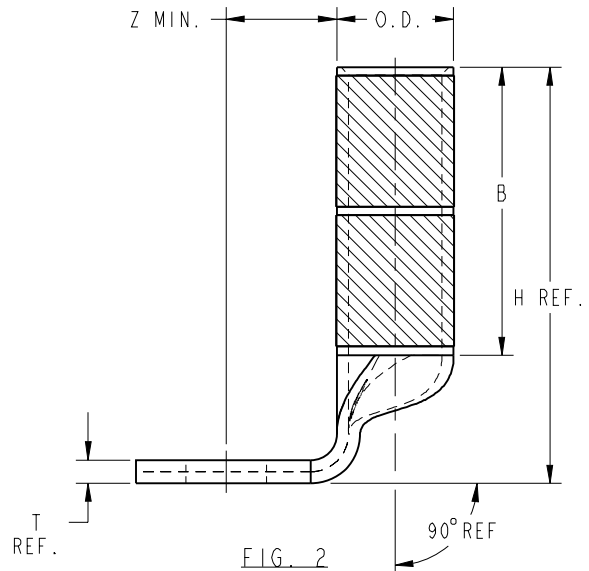
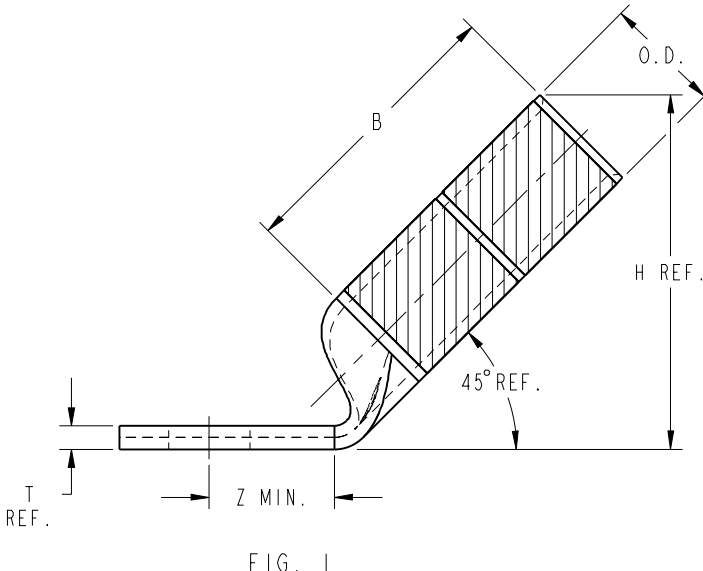
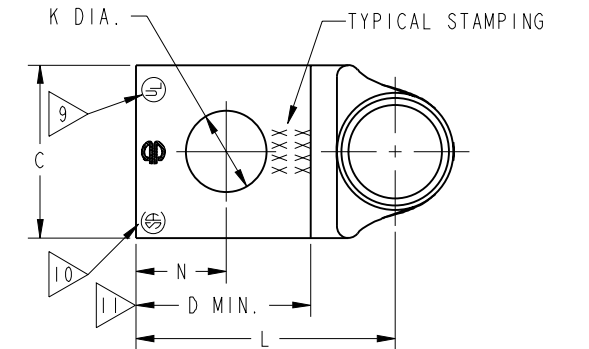
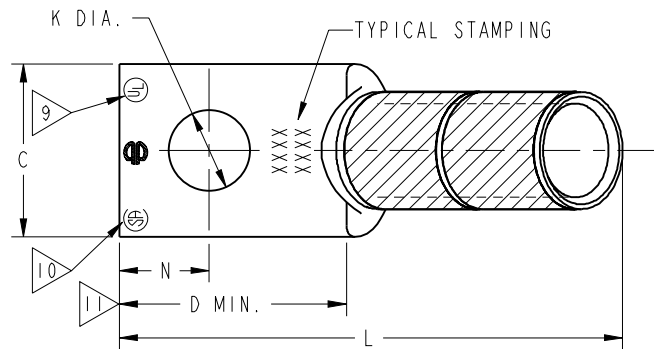
REV	DATE	DESCRIPTION	EC	BY	C'H'K.
C	2022-06-29 01:00:00 EDT	UPDATED H REF & L FOR YA4CN45 UPDATED H REF FOR YA4CN90	220617021301	DD	NAG

CONNECTOR SIZE	TOLERANCES					
	B	C	K DIA.	L	N	O.D.
-8C THRU -25	±.06	±.04	±.02	±.09	±.03	±.01
-26 THRU -34	±.08	±.04	±.02	±.12	±.03	±.01
-35 AND UP	±.09	±.06	±.02	±.15	±.06	±.01

TOLERANCE BLOCK

CATALOG NO.	DIE INFORMATION			MECHANICAL RATCHET					HYDRAULIC					DIELESS (# CRIMPS)	WIRE STRIP LENGTH	
	COLOR CODE	DIE INDEX	TYPE	6 YIMRTC	OUR840	MD6 MD7	MD6--R2 MD7-34R	PATMD6 PAT600	8 Y34A Y34B Y34BH	5 Y35, Y39 Y750, BAT35 PAT750	5 4 Y46 PAT46	5 3 Y45	Y48B			Y60BHU
YA4CTC3845 YA4CTC3890 YA4CN45 YA4CN90	GRAY	8 346	GRAY DIE SET NEST INDENTOR	GRAY (4)	X4CRT(2)	X4CRT(2) W4CRT(2) W4CVT(2)	X4CRT(2) W4CRT(2) W4CVT(2)	X4CRT(2) W4CRT(2) W4CVT(2)	----- B4CD(1) A4CD(1) Y34PR	U4CRT(2) U6CABT(2) U4CD-1(1) Y34PR	U4CRT(2) U6CABT(2) U4CD-1(1) Y34PR	U4CRT(2) U6CABT(2) U4CD-1(1) Y34PR	-----	-----	MECHANICAL: MY29-3(2) MY29-11(2) MRC840(2) HYDRAULIC: Y644(1) Y81KFT(1) YY4PC834(1)	1-3/16"



- NOTES:
- MATERIAL : COPPER TUBING.
  - FINISH: ELECTRO-TIN PLATED.
  - CATALOG # PT6515 ADAPTOR IS REQUIRED TO USE "U" DIES IN Y45 SERIES TOOLS.
  - CATALOG # PUADP-1 ADAPTOR IS REQUIRED TO USE "U" DIES IN Y46 SERIES TOOLS.
  - Y35P3 INDENTOR ADAPTOR REQUIRED FOR Y34PR INDENTOR.
  - PERMANENT DIE IN TOOLING.
  - DIMENSIONS IN BRACKETS [ ] ARE IN MILLIMETERS ROUNDED OFF TO THE NEAREST MILLIMETER, UNLESS OTHERWISE NOTED, AND ARE FOR REFERENCE ONLY.
  - FOR USE BY CUSTOMERS THAT HAVE THIS HYPRESS™. NO NEW Y34A HYPRESSES™ ARE BEING PROCESSED. Y34A USES A--D NEST DIES ONLY.
  - CONNECTORS ARE UL LISTED; UNDRILLED VERSIONS ARE NOT UL LISTED.
  - CONNECTORS ARE CSA CERTIFIED; UNDRILLED VERSIONS ARE NOT CSA CERTIFIED.
  - FOR UNDRILLED VERSIONS ADD SUFFIX "-U" TO END OF CATALOG NUMBER. FOR UNDRILLED VERSIONS, USE D MIN. = N MAX. + Z MIN.
  - "X", "W-RT", "W-VT", "U", & "L" DIE SETS ARE COLOR CODED. "A", "B", AND "C" DIES ARE NOT COLOR CODED. NESTS AND INDENTOR TYPE ARE NOT COLOR CODED.

TO ORDER BURNDY@PRODUCTS CALL  
 UNITED STATES: 1-800-346-4175 (LONDONDERRY, NH)  
 CANADA: 1-800-361-6975 (QUEBEC)  
 1-800-387-6487 (ALL OTHER PROVINCES)  
 FOR PRODUCT INFO: <http://www.burndy.com>

ITEM NO: N/A  
 CAT. NO: YA-TC-45,-90 / YA-45,-90 / YA-N-45,-90  
 DRAWN BY: J.MICHAUD 1/17/95  
 CHECKER: D.FILLION 1/17/95  
 DSN APPVL: C.PALAGI 1/18/95  
 MFG APPVL: N/A  
 QA APPVL: C.ACKERMAN 2/03/95  
 MKT APPVL: T.NELSON 1/20/95

COPPER HYLUG™  
 HUBBELL  
 BURNDY

SCALE: NTS  
 DRAWING NO: SE209241  
 REV: C  
 SHEET 5 OF 32

REV: CREO\_08/10/21