

DRAWING NO.
SE209512

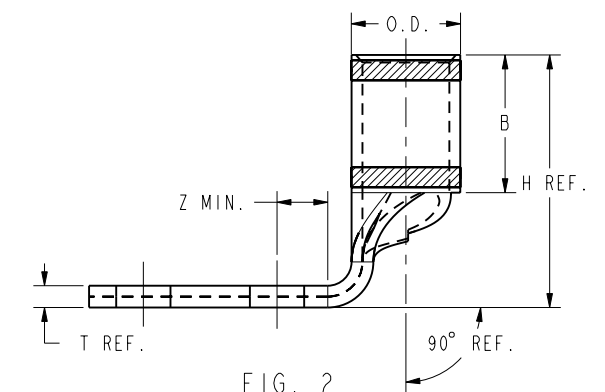
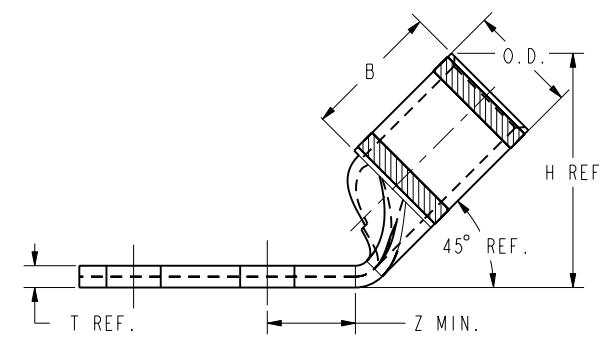
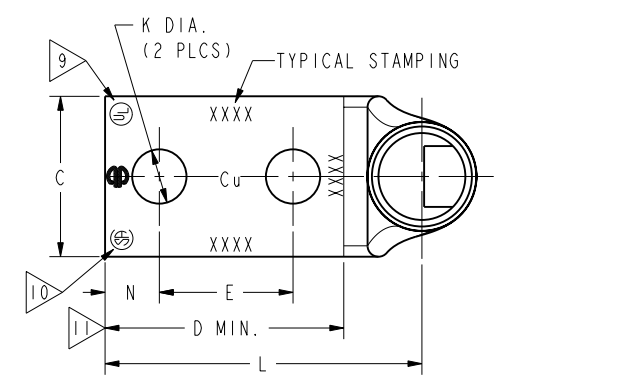
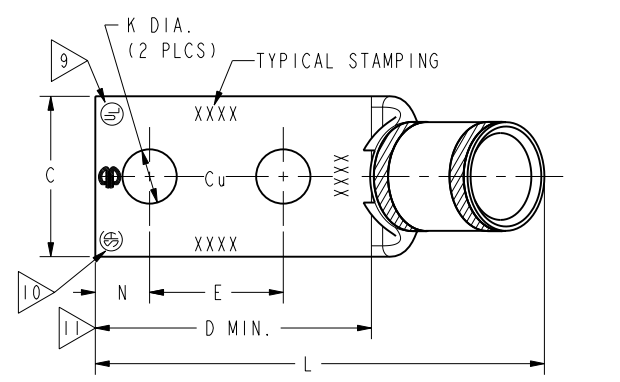
CATALOG NUMBER	STRANDED COPPER CONDUCTOR ACCOMMODATED			BOLT SIZE	METRIC BOLT SIZE	FIG. NO.	DIMENSIONS									
	CODE (AWG)	NAVY	METRIC SIZE (CLASS 2)				B	C	E	H REF	K DIA	L	N	O.D.	T REF	Z MIN
YA31L2TC1245	350 kcmil	350	-----	1/2	M12	1	1.06 [27]	1.29 [33]	1.25 [32]	1.85 [47]	.53 [13]	3.93 [100]	.53 [13]	.88 [22]	.18 [5]	.55 [14]
2						↑	↑	1.25 [32]	1.98 [50]	.53 [13]	2.91 [74]	.53 [13]	↑	↑	.55 [14]	
1						↓	↓	1.75 [44]	1.85 [47]	.56 [14]	4.62 [117]	.63 [16]	↓	↓	.64 [16]	
2						1.06 [27]	1.29 [33]	1.75 [44]	1.98 [50]	.56 [14]	3.60 [91]	.63 [16]	.88 [22]	.18 [5]	.64 [16]	

REV	DATE	DESCRIPTION	ECO	BY	C'H'K.
B	10/31/2011 00:00:00 AM	UPDATE TOOLING DETAIL	25812	RG	MA

CONNECTOR SIZE	TOLERANCES						
	B	C	E	K DIA	L	N	O.D.
-8C THRU -25	±.06	±.04	±.02	±.02	±.09	±.03	±.01
-26 THRU -34	±.08	±.04	±.02	±.02	±.12	±.03	±.01
-35 AND UP	±.09	±.06	±.02	±.02	±.15	±.06	±.01

TOLERANCE BLOCK

CATALOG NO.	COLOR CODE	DIE INFORMATION		MECHANICAL RATCHET						HYDRAULIC					DIELESS (# CRIMPS)	WIRE STRIP LENGTH
		DIE INDEX	TYPE	6 YIMRTC	OUR840	MD6 MD7	MD6--R2 MD7-34R	PATMD6 PAT600	8 Y34A Y34B Y34BH	5 Y35, Y39 Y750, BAT35 PAT750	5 4 Y46 PAT46	5 3 Y45	Y48B	Y60BHU		
YA31L2TC1245 YA31L2TC1290 YA312LN45 YA312LN90	RED	18 324	RED DIE SET NEST INDENTOR	-----	-----	-----	W31RT(2) W31VT(2)	W31VT(2)	-----	U31RT(2) U29ART(2)	U31RT(2) U29ART(2)	U31RT(2) U29ART(2)	C31R(2) C29AR(2)	L31RT(1) L29ART(1)	HYDRAULIC: Y644(1) Y81KFT(2) Y4PC834(2)	1-3/16"
				-----	-----	-----	-----	-----	B31D(1) A31D(1) Y34PR	U31D-1(1) Y34PR	U31D-1(1) Y34PR	U31D-1(1) Y34PR	C31D(1) Y48PR	-----		



- NOTES:
- MATERIAL: COPPER TUBING.
 - FINISH: ELECTRO-TIN PLATED.
 - CATALOG # PT6515 ADAPTOR IS REQUIRED TO USE "U" DIES IN Y45 SERIES TOOLS.
 - CATALOG # PUADP-1 ADAPTOR IS REQUIRED TO USE "U" DIES IN Y46 SERIES TOOLS.
 - Y35P3 INDENTOR ADAPTOR REQUIRED FOR Y34PR INDENTOR.
 - PERMANENT DIE IN TOOLING.
 - DIMENSIONS IN BRACKETS [] ARE IN MILLIMETERS ROUNDED OFF TO THE NEAREST MILLIMETER, UNLESS OTHERWISE NOTED, AND ARE FOR REFERENCE ONLY.
 - FOR USE BY CUSTOMERS THAT HAVE THIS HYPRESS™. NO NEW Y34A HYPRESS™ TOOLS ARE BEING PROCESSED. Y34A USES A--D NEST DIES ONLY.
 - CONNECTORS ARE UL LISTED, UNDRILLED VERSIONS ARE NOT UL LISTED.
 - CONNECTORS ARE CSA CERTIFIED, UNDRILLED VERSIONS ARE NOT CSA CERTIFIED.
 - FOR UNDRILLED VERSIONS ADD SUFFIX "-U" TO END OF CATALOG NUMBER. FOR UNDRILLED VERSIONS, USE D MIN. = N MAX. + E MIN. + Z MIN.
 - "X", "W-RT", "W-VT", "U", & "L" DIE SETS ARE COLOR CODED. "A", "B", AND "C" DIES ARE NOT COLOR CODED. NESTS AND INDENTOR TYPE ARE NOT COLOR CODED.

REFERENCE: SD035209

TO ORDER BURNDY® PRODUCTS CALL		COPPER HYLUG™	
UNITED STATES 1-800-346-4175 (LONDONDERRY, NH)		ITEM NO: --	SCALE: 3:2
CANADA: 1-800-361-6975 (QUEBEC) 1-800-387-6487 (ALL OTHER PROVINCES)		CAT. NO: YA-L-2TC-45, 90/YA--2L-45, 90, YA--2LN-45, 90/YA-4L-45, 90	REV: B
FOR PRODUCT INFO: http://www.burndy.com		DRAWN BY: J. MITCHAUD 02/03/95	BURNDY
		CHECKER: D. FILLION 02/21/95	
		DSN APPVL: C. PALAGI 03/09/95	
		MFG APPVL: N/A --	
		QA APPVL: C. ACKERMAN 04/03/95	
		MKT APPVL: T. NELSON 03/13/95	
		PROJ #: --	
		DOCUMENT TYPE: Sales	
		REL LEVEL: Released	

REV: PE0200