

DRAWING NO.
SE209512

| CATALOG NUMBER | STRANDED COPPER CONDUCTOR ACCOMMODATED | | | BOLT SIZE | METRIC BOLT SIZE | FIG. NO. | DIMENSIONS | | | | | | | | | |
|----------------|--|------|-------------------------------|-----------|------------------|-----------|------------|-----------|-----------|------------|-----------|------------|----------|-----------|---------|----------|
| | CODE (AWG) | NAVY | METRIC SIZE (CLASS 2) | | | | B | C | E | H REF. | K DIA. | L | N | O.D. | T REF. | Z MIN. |
| YA362L45 | 600 kcmil | ---- | 300mm ² STR [23.1] | 3/8 | ---- | 1 | 1.38 [35] | 1.74 [44] | 1.13 [29] | 2.48 [63] | .44 [11] | 4.33 [110] | .50 [13] | 1.19 [30] | .27 [7] | .52 [13] |
| 2 | | | | | | 1.13 [29] | 2.68 [68] | .44 [11] | 2.94 [75] | | | | | | | |
| YA362L90 | | | | 3/8 | ---- | 1 | 1.00 [25] | 2.48 [63] | .40 [10] | 4.21 [107] | .50 [13] | 1.19 [30] | .27 [7] | .52 [13] | | |
| 2 | | | | | | 1.00 [25] | 2.68 [68] | .40 [10] | 2.81 [71] | .50 [13] | 1.19 [30] | .27 [7] | .52 [13] | | | |
| YA362LN45 | | | | 1/2 | M12 | 1 | 1.75 [44] | 2.48 [63] | .56 [14] | 5.21 [132] | .63 [16] | 1.19 [30] | .27 [7] | .64 [16] | | |
| 2 | | | | | | 1.75 [44] | 2.68 [68] | .56 [14] | 3.81 [97] | .63 [16] | 1.19 [30] | .27 [7] | .64 [16] | | | |

| REV | DATE | DESCRIPTION | ECO | BY | C'H'K. |
|-----|------------------------|-----------------------|-------|----|--------|
| C | 10/31/2011 00:00:00 AM | UPDATE TOOLING DETAIL | 25812 | RG | MA |

| CONNECTOR SIZE | TOLERANCES | | | | | | |
|----------------|------------|------|------|--------|------|------|------|
| | B | C | E | K DIA. | L | N | O.D. |
| -8C THRU -25 | ±.06 | ±.04 | ±.02 | ±.02 | ±.09 | ±.03 | ±.01 |
| -26 THRU -34 | ±.08 | ±.04 | ±.02 | ±.02 | ±.12 | ±.03 | ±.01 |
| -35 AND UP | ±.09 | ±.06 | ±.02 | ±.02 | ±.15 | ±.06 | ±.01 |

TOLERANCE BLOCK

INSTALLATION TOOLING (# CRIMPS)

| CATALOG NO. | DIE INFORMATION | | | MECHANICAL RATCHET | | | | | HYDRAULIC | | | | | DIELESS (# CRIMPS) | WIRE STRIP LENGTH | |
|---|-----------------|-----------|-----------------------------------|--------------------|--------|---------|-----------------|---------------|-------------------|-----------------------------|-----------------------|-----------------------|---------------------|-----------------------|--|--------|
| | COLOR CODE | DIE INDEX | TYPE | 5 YIMRTC | OUR840 | MD6 MD7 | MD6--R2 MD7-34R | PATMD6 PAT600 | 7 Y34A Y34B Y34BH | Y35, Y39 Y750, BAT35 PAT750 | 4 Y46 PAT46 | 3 Y45 | Y48B | | | Y60BHU |
| YA362L45, -90 YA362L2TC3845 YA362L2TC3890 YA362LN45, -90 | GREEN | 22 472 | GREEN DIE SET NEST INDENTOR | ---- | ---- | ---- | ---- | ---- | ---- | U36RT(2) U32ART(2) | U36RT(2) U32ART(2) | U36RT(2) U32ART(2) | C36R(1) C32AR(1) | L36RT(1) L32ART(1) | HYDRAULIC: Y644(1) Y81KFT(2) Y4PC834(2) | 1-3/4" |

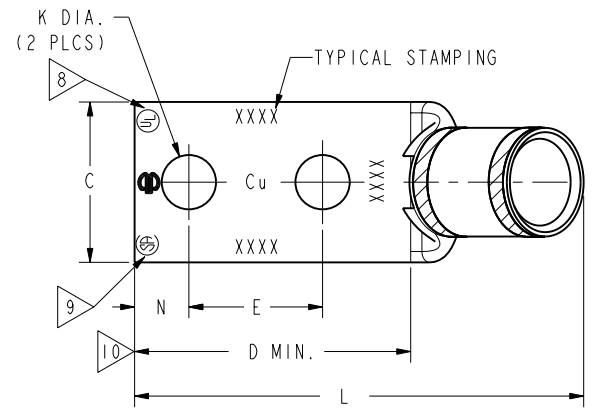


FIG. 1

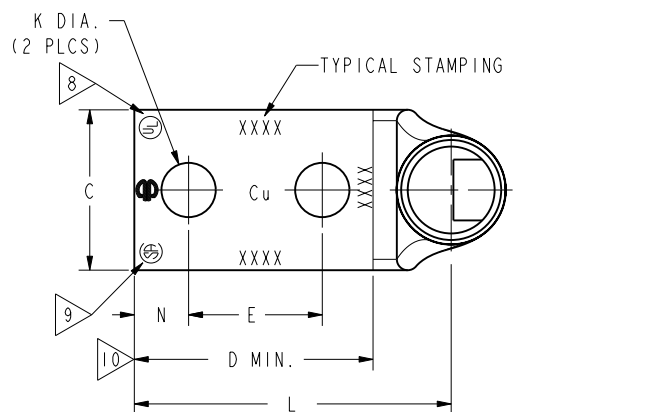


FIG. 2

- NOTES:
- MATERIAL : COPPER TUBING.
 - FINISH: ELECTRO-TIN PLATED.
 - CATALOG # PT6515 ADAPTOR IS REQUIRED TO USE "U" DIES IN Y45 SERIES TOOLS.
 - CATALOG # PUADP-1 ADAPTOR IS REQUIRED TO USE "U" DIES IN Y46 SERIES TOOLS.
 - PERMANENT DIE IN TOOLING.
 - DIMENSIONS IN BRACKETS [] ARE IN MILLIMETERS ROUNDED OFF TO THE NEAREST MILLIMETER, UNLESS OTHERWISE NOTED, AND ARE FOR REFERENCE ONLY.
 - FOR USE BY CUSTOMERS THAT HAVE THIS HYPRESS™. NO NEW Y34A HYPRESS™ TOOLS ARE BEING PROCESSED. Y34A USES A--D NEST DIES ONLY.
 - CONNECTORS ARE UL LISTED; UNDRILLED VERSIONS ARE NOT UL LISTED.
 - CONNECTORS ARE CSA CERTIFIED; UNDRILLED VERSIONS ARE NOT CSA CERTIFIED.
 - FOR UNDRILLED VERSIONS ADD SUFFIX "-U" TO END OF CATALOG NUMBER. FOR UNDRILLED VERSIONS, USE D MIN. = N MAX. + E MIN. + Z MIN.
 - "X", "W-RT", "W-VT", "U", & "L" DIE SETS ARE COLOR CODED. "A", "B", AND "C" DIES ARE NOT COLOR CODED. NESTS AND INDENTOR TYPE ARE NOT COLOR CODED.

| | | | |
|---|--|--------------------------------|--|
| TO ORDER BURNDY® PRODUCTS CALL | | COPPER HYLUG™ | |
| UNITED STATES 1-800-346-4175 (LONDONDERRY, NH) | | ITEM NO: N/A | |
| CANADA: 1-800-361-6975 (QUEBEC) 1-800-387-6487 (ALL OTHER PROVINCES) | | CAT. NO: YA-- (TABLE) | |
| FOR PRODUCT INFO: http://www.burndy.com | | DRAWN BY: J. MICHAUD 03/02/95 | |
| | | CHECKER: D. FILLION 03/03/95 | |
| | | DSN APPVL: C. PALAGI 03/07/95 | |
| | | MFG APPVL: N/A | |
| | | QA APPVL: C. ACKERMAN 03/29/95 | |
| | | MKT APPVL: T. NELSON 03/13/95 | |
| | | SCALE: 3:2 | |
| | | PROJ FAM: CM&R COMPRESSION | |
| | | DRAWING NO | |
| | | SE209512 | |
| | | SHEET 35 OF 52 | |
| | | REV C | |

REFERENCE: SD035209

REV: PE0200