

DRAWING NO.
SE209512

CATALOG NUMBER	STRANDED COPPER CONDUCTOR ACCOMMODATED			BOLT SIZE	METRIC BOLT SIZE	FIG. NO.	DIMENSIONS									
	CODE (AWG)	NAVY	METRIC SIZE (CLASS 2)				B	C	E	H REF.	K DIA.	L	N	O.D.	T REF.	Z MIN.
YA392L45	750 kcmil	----	375mm ² STR	3/8	----	1	1.42 [36]	1.91 [49]	1.13 [29]	2.65 [67]	.44 [11]	4.43 [113]	.50 [13]	1.30 [33]	.27 [7]	.52 [13]
YA392L90						2	1.13 [29]	2.81 [71]	.44 [11]	3.00 [76]						
YA39L2TC3845						1	1.00 [25]	2.65 [67]	.40 [10]	4.31 [109]						
YA39L2TC3890						2	1.00 [25]	2.81 [71]	.40 [10]	2.87 [73]	.50 [13]					
YA39L2TC12E345						1	1.50 [38]	2.65 [67]	.53 [13]	4.87 [124]	.53 [13]					.55 [14]
YA39L2TC12E390						2	1.50 [38]	2.8 [71]	.53 [13]	3.43 [87]	.53 [13]	1.30 [33]	.27 [7]	.55 [14]		

REV	DATE	DESCRIPTION	ECO	BY	C'H'K.
A	10/31/2011 00:00:00 AM	UPDATE TOOLING DETAIL	25812	RG	MA

CONNECTOR SIZE	TOLERANCES						
	B	C	E	K DIA.	L	N	O.D.
-8C THRU -25	±.06	±.04	±.02	±.02	±.09	±.03	±.01
-26 THRU -34	±.08	±.04	±.02	±.02	±.12	±.03	±.01
-35 AND UP	±.09	±.06	±.02	±.02	±.15	±.06	±.01

TOLERANCE BLOCK

INSTALLATION TOOLING (# CRIMPS)

CATALOG NO.	DIE INFORMATION			MECHANICAL RATCHET					HYDRAULIC					DIELESS (# CRIMPS)	WIRE STRIP LENGTH	
	COLOR CODE	DIE INDEX	TYPE	5 YIMRTC	OUR840	MD6 MD7	MD6--R2 MD7-34R	PATMD6 PAT600	7 Y34A Y34B Y34BH	Y35, Y39 Y750, BAT35 PAT750	4 Y46 PAT46	3 Y45	Y48B			Y60BHU
YA392L45, -90 YA39L2TC3845 YA39L2TC3890 YA39L2TC12E345 YA39L2TC12E390	BLACK	24	BLACK DIE SET NEST INDENTOR	----	----	----	----	----	----	U39RT(2)	U39RT(2) P39RT(2)	U39RT(2) S39RT(2)	C39R(1) C36AR(1)	L39RT(1) L36ART(1)	HYDRAULIC: Y644(1) Y81KFT(3) Y4PC834(3)	1-15/16"

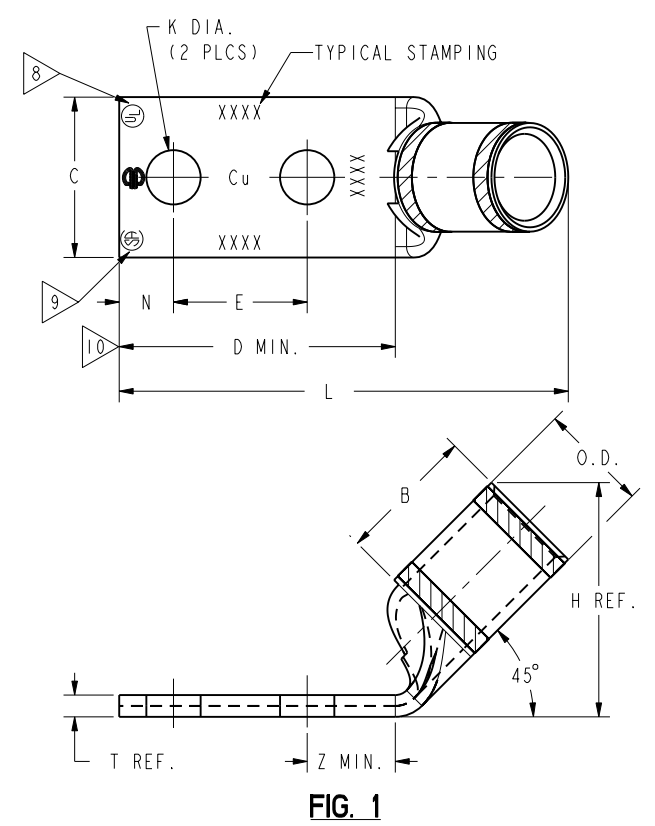


FIG. 1

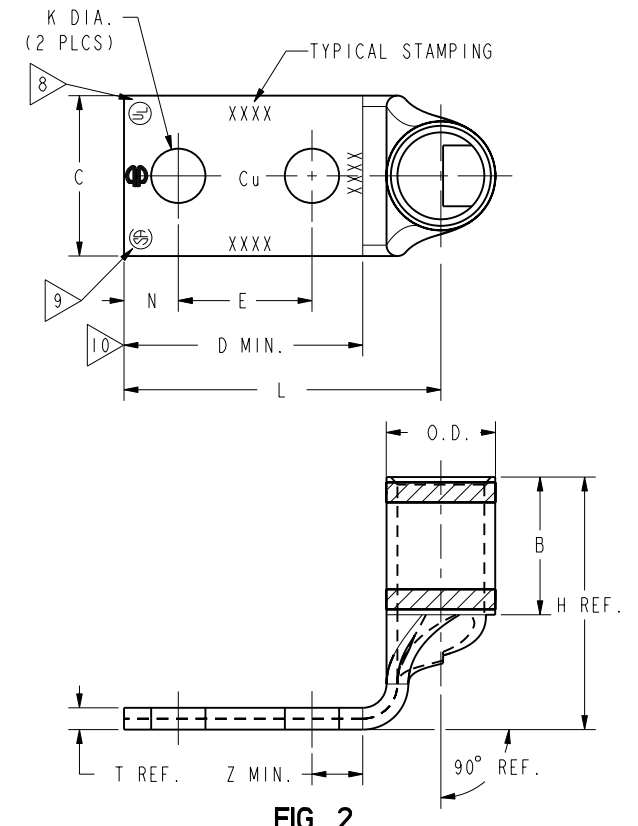


FIG. 2

REFERENCE: SD035209

NOTES:

- MATERIAL : COPPER TUBING.
- FINISH: ELECTRO-TIN PLATED.
- CATALOG # PT6515 ADAPTOR IS REQUIRED TO USE "U" DIES IN Y45 SERIES TOOLS.
- CATALOG # PUADP-1 ADAPTOR IS REQUIRED TO USE "U" DIES IN Y46 SERIES TOOLS.
- PERMANENT DIE IN TOOLING.
- DIMENSIONS IN BRACKETS [] ARE IN MILLIMETERS ROUNDED OFF TO THE NEAREST MILLIMETER, UNLESS OTHERWISE NOTED, AND ARE FOR REFERENCE ONLY.
- FOR USE BY CUSTOMERS THAT HAVE THIS HYPRESS™. NO NEW Y34A HYPRESS™ TOOLS ARE BEING PROCESSED. Y34A USES A--D NEST DIES ONLY.
- CONNECTORS ARE UL LISTED; UNDRILLED VERSIONS ARE NOT UL LISTED.
- CONNECTORS ARE CSA CERTIFIED; UNDRILLED VERSIONS ARE NOT CSA CERTIFIED.
- FOR UNDRILLED VERSIONS ADD SUFFIX "-U" TO END OF CATALOG NUMBER. FOR UNDRILLED VERSIONS, USE D MIN. = N MAX. + E MIN. + Z MIN.
- "X", "W-RT", "W-VT", "U", & "L" DIE SETS ARE COLOR CODED. "A", "B", AND "C" DIES ARE NOT COLOR CODED. NESTS AND INDENTOR TYPE ARE NOT COLOR CODED.

TO ORDER BURNDY® PRODUCTS CALL		COPPER HYLUG™	
UNITED STATES 1-800-346-4175 (LONDONDERRY, NH)		ITEM NO: N/A	CAT. NO: YA39-2TC-, YA39-2LN- (TABLE)
CANADA: 1-800-361-6975 (QUEBEC) 1-800-387-6487 (ALL OTHER PROVINCES)		DRAWN BY: J. MITCHAUD 02/03/95	CHECKER: D. FILLION 02/21/95
FOR PRODUCT INFO: http://www.burndy.com		DSN APPVL: C. PALAGI 03/09/95	MFG APPVL: N/A
		QA APPVL: C. ACKERMAN 04/03/95	MKT APPVL: T. NELSON 03/13/95
		PROJ FAM: CM&R COMPRESSION	DRAWING NO: SE209512
		PROJECT #: --	SCALE: 3:2
		DOCUMENT TYPE: Sales	SHEET 39 OF 52
		REL LEVEL: Released	REV: A

REV: PE0200