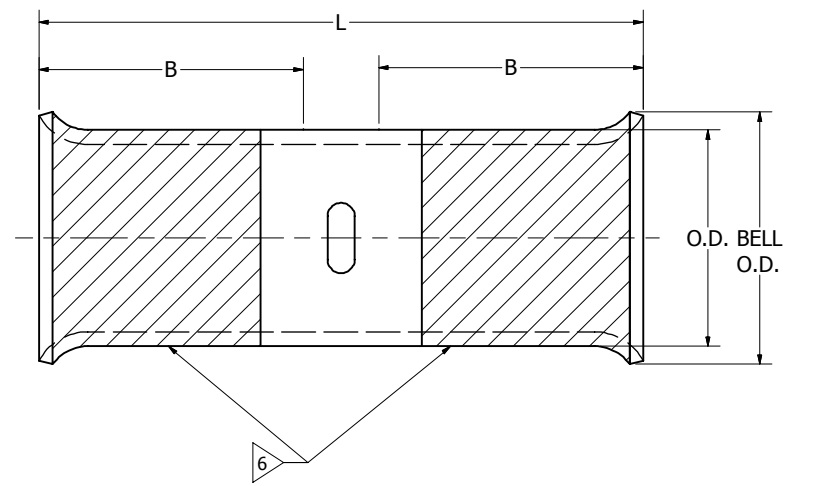


CATALOG NUMBER	COPPER CABLE								
	COMMERCIAL (CODE) CABLE	NAVY CABLE	FLEXIBLE / EXTRA FLEXIBLE CABLE .						METRIC CABLE
			CLASS 'G'	CLASS 'H'	CLASS 'I'	CLASS 'K'	CLASS 'M'	LOCOMOTIVE CABLE	
YS8C-LB	#8 STR	N23(7)	----	----	----	----	----	----	10mm ² (7 STR)
	----	----	#8(49 STR)	#8(133 STR)	----	#8(168/30)	#8(420/34)	#8(37/24)	----
YS5C-LB	#5 STR	N30(19)	----	----	----	----	----	----	16mm ² (7 STR)
	----	----	#6(49 STR)	#6(133 STR)	#6(63/24)	#6(266/30)	#6(665/34)	#6(61/24)	----
YS4C-LB	#4 STR	N40(19)	----	----	----	----	----	----	----
	----	----	#5(49 STR)	#5(133 STR)	#5(84/24)	#5(336/30)	#5(836/34)	#5(91/24)	----
YS3C-LB	#3 STR	N50(19)	----	----	----	----	----	----	25mm ² (19 STR)
	----	----	#4(49 STR)	#4(133 STR)	#4(105/24)	#4(420/30)	#4(1064/34)	#4(105/24)	----
YS2C-LB	#2 STR	N60(37)	----	----	----	----	----	----	----
	----	----	#3(49 STR)	#3(133 STR)	#3(133/24)	#3(532/30)	#3(1323/34)	#3(125/24)	----
YS1C-LB	#1 STR	N75(37)	----	----	----	----	----	----	35mm ² (19 STR)
	----	----	#2(49 STR)	#2(133 STR)	#2(161/24)	#2(665/30)	#2(1666/34)	#2(150/24)	----
YS25-LB	1/0 STR	N100(61)	----	----	----	----	----	----	50mm ² (19 STR)
	----	----	#1(133 STR)	#1(259 STR)	#1(210/24)	#1(836/30)	#1(2107/34)	#1(225/24)	----
YS26-LB	2/0 STR	N125(61)	----	----	----	----	----	----	----
	----	----	1/0(133 STR)	1/0(259 STR)	1/0(266/24)	1/0(1064/30)	1/0(2646/34)	1/0(275/24)	----
YS27-LB	3/0 STR	N150(61)	----	----	----	----	----	----	70mm ² (19 STR)
	----	----	2/0(133 STR)	2/0(259 STR)	2/0(342/24)	2/0(1323/30)	2/0(3325/34)	2/0(325/24)	----
YS28-LB	4/0 STR	N200(61)	----	----	----	----	----	----	95mm ² (19,37 STR)
	----	----	3/0(133 STR)	3/0(259 STR)	3/0(418/24)	3/0(1666/30)	3/0(4256/34)	3/0(450/24)	----
YS29-LB	250 Kcmil	N250(61)	----	----	----	----	----	----	120mm ² (37 STR)
	----	----	4/0(133 STR)	4/0(259 STR)	----	----	----	----	----
YS30-LB	300 Kcmil	N300(91)	----	----	----	----	----	----	150mm ² (37 STR)
	----	----	250 Kcmil(259 STR)	250 Kcmil(427 STR)	4/0(532/24)	4/0(2107/30)	4/0(5320/34)	4/0(550/24)	----
YS31-LB	350 Kcmil	N350(91)	----	----	----	----	----	----	----
	----	----	----	----	250 Kcmil(637/24)	250 Kcmil(2499/30)	250 Kcmil(6384/34)	262.6 Kcmil(650/24)	----
YS32-LB	400 Kcmil	N400(127)	----	----	----	----	----	----	185mm ² (37 STR)
	----	----	300 Kcmil(259 STR)	300 Kcmil(427 STR)	300 Kcmil(735/24)	300 Kcmil(2989/30)	300 Kcmil(7581/34)	313.1 Kcmil(775/24)	----
YS34-LB	500 Kcmil	----	----	----	----	----	----	----	240mm ² (37,61 STR)
	----	----	350 Kcmil(259 STR) 400 Kcmil(259 STR)	350 Kcmil(427 STR) 400 Kcmil(427 STR)	350 Kcmil(882/24) 400 Kcmil(980/24)	350 Kcmil(3458/30)	350 Kcmil(8806/34)	373.7 Kcmil(925/24)	----
YS36-LB	600 Kcmil	----	----	----	----	----	----	----	300mm ² (61 STR)
	----	----	500 Kcmil(259 STR)	500 Kcmil(427 STR)	450 Kcmil(1127/24)	450 Kcmil(4522/30)	450 Kcmil(11396/34)	444.4 Kcmil(1100/24)	----
YS38-LB	700 Kcmil	----	----	----	----	----	----	----	----
	----	----	550 Kcmil(427 STR)	550 Kcmil(703 STR)	500 Kcmil(1225/24) 550 Kcmil(1372/24)	500 Kcmil(5054/30)	500 Kcmil(12691/34)	535.3 Kcmil(1325/24)	----
YS39-LB	750 Kcmil	----	----	----	----	----	----	----	----
	----	----	600 Kcmil(427 STR)	----	----	----	550 Kcmil(13664/34)	----	----
YS40-LB	800 Kcmil	----	----	----	----	----	----	----	400mm ² (61 STR)
	----	----	----	600 Kcmil(703 STR)	600 Kcmil(1470/24)	----	600 Kcmil(14945/34)	----	----
YS44-LB	1000 Kcmil	----	----	----	----	----	----	----	500mm ² (61 STR)
	----	----	750 Kcmil(427 STR)	750 Kcmil(703 STR)	650 Kcmil(1596/24)	600 Kcmil(5985/30)	----	777.7 Kcmil(1925/24)	----

REV	DATE	DESCRIPTION	ECO	BY	C'H'
A	05/20/2014	DRAWING RELEASE	36068	AT	RG



NOTES:

1. MATERIAL: COPPER
2. FINISH: TIN PLATED. CONNECTORS CAN BE ORDERED WITH NICKEL PLATING BY ADDING SUFFIX NK.
3. CAT. NO. Y35P3 ADAPTOR IS REQUIRED TO USE "Y34PR" TYPE INDENTORS WITH "U" TYPE NEST DIES IN Y35 AND Y750 SERIES TOOLS.
4. CAT. NO. PT6515 ADAPTOR IS REQUIRED TO USE "U" TYPE DIES IN Y45 SERIES TOOLS.
5. CAT. NO. PUADP-1 ADAPTOR IS REQUIRED TO USE "U" TYPE DIES IN Y46 SERIES TOOLS.
6. LETTERING INFORMATION ON NATIONAL ELECTRIC CODE CONDUCTORS ACCOMMODATED IS ON COLOR CODED BARREL.
7. UL LISTED AND CSA CERTIFIED WIRE CONNECTORS.
8. ALSO PNEUMATIC VERSION Y29NC.
9. THE MD6-6P2 RATCHET TOOL IS REQUIRED ON THESE SIZES. DO NOT USE MD6 OR MD6R TOOLS.
10. DIMENSIONS IN BRACKETS [] ARE IN MILLIMETERS ROUNDED OFF TO THE NEAREST MILLIMETER, UNLESS OTHERWISE SPECIFIED AND ARE FOR REFERENCE ONLY.

TO ORDER BURNDY® PRODUCTS CALL		COPPER BELLED HYLINK™	
UNITED STATES 1-800-346-4175 (LONDONDERRY, NH)		ITEM NO: N/A	
CANADA: 1-800-361-6975 (QUEBEC) 1-800-387-6487 (ALL OTHER PROVINCES)		CAT. NO: YS-LB (SEE TABLE)	
FOR PRODUCT INFO: http://www.burndy.com		DRAWN BY: R PERRAULT 2/12/1996	
		CHECKER: K HENRY 2/15/1996	
		DSN APRVL: C PALAGI 2/14/1996	
		MFG APRVL: --	
		QA APRVL: D VARIO 2/19/1996	
		MKT APRVL: L HERRON 2/14/1996	
		PROD FAM: --	
		PROJECT #: --	
		DOCUMENT TYPE: SALES	
		REL LEVEL: Released	
		DRAWING NO	
		SE210454	
		SHEET 1 OF 2	
		REV	
		A	

CAT. NO.	B MIN.	L	O.D.	BELL O.D.	DIE INDEX	DIELESS TOOLS		INSTALLATION TOOLING USING DIES													CABLE STRIP LENGTH	REV	DATE	DESCRIPTION	ECO	BY	C'H'K.			
						MECH.	HYDR.	DIE INFORMATION			MECHANICAL			HYDRAULIC										A	05/20/2014	DRAWING RELEASE	36068	AT	RG	
								MR, MY	Y644, Y644M Y644MBH	TYPE	COLOR	MD6	OUR840	Y1MRTC Y122CMR	Y29B	Y34B	Y35	Y39	Y750	Y45		Y46	Y48B	Y60BHU						
YS8C-LB	.44 [11]	1.09 [28]	.27 [7]	.32 [8]	49 1013	Y8MRB-1	---	DIE SET	RED	W8CRT	X8CRT	RED	---	---	U8CRT	U8CRT	U8CRT	U8CRT	U8CRT	---	---	7/16"								
YS5C-LB	.81 [21]	1.82 [46]	.30 [8]	.35 [9]	7 1014	MR4C MY29-3 MY29-11	1 CRIMP	DIE SET	BLUE	W5CRT	X5CRT	BLUE	---	---	U5CRT	U5CRT	U5CRT	U5CRT	U5CRT	---	---	7/8"								
YS4C-LB	.81 [21]	1.84 [47]	.34 [9]	.40 [10]	8 1015	MR4C MY29-3 MY29-11	1 CRIMP	DIE SET	GRAY	W4CRT	X4CRT	GRAY	---	---	U4CRT	U4CRT	U4CRT	U4CRT	U4CRT	---	---	7/8"								
YS3C-LB	.88 [22]	1.96 [50]	.38 [10]	.44 [11]	9 1016	MY29-3 MY29-11	1 CRIMP	DIE SET	WHITE	---	---	---	---	---	U3CRT	U3CRT	U3CRT	U3CRT	U3CRT	---	---	15/16"								
YS2C-LB	.87 [22]	1.98 [50]	.42 [11]	.49 [12]	10 1017	MY29-3 MY29-11	1 CRIMP	DIE SET	BROWN	W2CRT	X2CRT	BROWN	---	---	U2CRT	U2CRT	U2CRT	U2CRT	U2CRT	---	---	15/16"								
YS1C-LB	.87 [22]	1.97 [50]	.46 [12]	.54 [14]	11 1018	MY29-3 MY29-11	1 CRIMP	DIE SET	GREEN	W1CRT-1	X1CRT-1	---	---	---	U1CRT-1/U11T-1 U1CRT/U11T	U1CRT-1/U11T-1 U1CRT/U11T	U1CRT-1/U11T-1 U1CRT/U11T	U1CRT-1/U11T-1 U1CRT/U11T	U1CRT-1/U11T-1 U1CRT/U11T	---	---	15/16"								
YS25-LB	.87 [22]	2.00 [51]	.51 [13]	.60 [15]	12 1019	MY29-3 MY29-11	1 CRIMP	DIE SET	PINK	W25RT	X25CRT	---	---	---	U25RT	U25RT	U25RT	U25RT	U25RT	---	---	15/16"								
YS26-LB	.93 [24]	2.12 [54]	.56 [14]	.66 [17]	13 1020	MY29-3 MY29-11	1 CRIMP	DIE SET	BLACK	W26RT	X26CRT	---	---	---	U26RT	U26RT	U26RT	U26RT	U26RT	---	---	1"								
YS27-LB	.99 [25]	2.24 [57]	.62 [16]	.72 [18]	14 1021	MY29-3 MY29-11	1 CRIMP	DIE SET	ORANGE	W27RT	X27RT	---	---	---	U27RT	U27RT	U27RT	U27RT	U27RT	---	---	1 1/16"								
YS28-LB	.98 [25]	2.26 [57]	.69 [18]	.80 [20]	15 1022	MY29-3 MY29-11	1 CRIMP	DIE SET	PURPLE	W28RT	X28RT	---	---	---	U28RT	U28RT	U28RT	U28RT	U28RT	C28R	---	1 1/16"								
YS29-LB	1.04 [26]	2.40 [61]	.75 [19]	.88 [22]	16 1023	MY29-3 MY29-11	1 CRIMP	DIE SET	YELLOW	W29RT	X29RT	---	---	---	U29RT	U29RT	U29RT	U29RT	U29RT	U29RT	C29R	---	1 1/16"							
YS30-LB	1.04 [26]	2.41 [61]	.81 [21]	.95 [24]	17 1024	---	1 CRIMP	DIE SET	WHITE	W30RT	---	---	---	---	U30RT	U30RT	U30RT	U30RT	U30RT	C30R	L30RT	1 1/8"								
YS31-LB	1.10 [28]	2.55 [65]	.88 [22]	1.03 [26]	18 1025	---	1 CRIMP	DIE SET	RED	W31RT	---	---	---	---	U31RT	U31RT	U31RT	U31RT	U31RT	C31R	L31RT	1 3/16"								
YS32-LB	1.17 [30]	2.69 [68]	.95 [24]	1.12 [28]	19 1026	---	1 CRIMP	DIE SET	BLUE	W32RT	---	---	---	---	U32RT	U32RT	U32RT	U32RT	U32RT	C32R	L32RT	1 1/4"								
YS34-LB	1.35 [34]	3.10 [79]	1.06 [27]	1.24 [31]	20 1027	---	1 CRIMP	DIE SET	BROWN	W34RT	---	---	---	---	U34RT	U34RT	U34RT	U34RT	U34RT	C34R	L34RT	1 7/16"								
YS36-LB	1.66 [42]	3.14 [80]	1.19 [30]	1.40 [36]	22 1028	---	1 CRIMP	DIE SET	GREEN	---	---	---	---	---	U36RT	U36RT	U36RT	U36RT	U36RT	C36R	L36RT	1 3/4"								
YS38-LB	1.85 [47]	3.14 [80]	1.25 [32]	1.47 [37]	400 1029	---	1 CRIMP	DIE SET	PINK	---	---	---	---	---	U38RT	U38RT	U38RT	U38RT	U38RT	---	---	1 15/16"								
YS39-LB	1.85 [47]	3.64 [92]	1.30 [33]	1.53 [39]	24 1030	---	1 CRIMP	DIE SET	BLACK	---	---	---	---	---	U39RT	U39RT	S39RT	P39RT	C39R	L39RT	---	1 15/16"								
YS40-LB	1.85 [47]	3.67 [93]	1.35 [34]	1.59 [40]	25 1031	---	1 CRIMP	DIE SET	ORANGE	---	---	---	---	---	---	---	---	S40RT	P40RT	C40R	L40RT	---	1 15/16"							
YS44-LB	1.85 [47]	4.20 [107]	1.50 [38]	1.76 [45]	27 1022	---	1 CRIMP	DIE SET	WHITE	---	---	---	---	---	---	---	---	S44RT	P44RT	C44R	L44RT	---	1 15/16"							

TOLERANCE ALLOWANCE		
CATALOG NUMBER	KEY LETTER	
	L	O.D.
YS8C-LB THRU YS25-LB	± .07 [1.8]	± .006 [0.15]
YS26-LB THRU YS34-LB	± .10 [2.5]	± .008 [0.20]
YS36-LB THRU YS44-LB	± .15 [3.8]	± .010 [0.25]

TO ORDER BURNDY® PRODUCTS CALL		COPPER BELLED HYLINK™	
UNITED STATES 1-800-346-4175 (LONDONDERRY, NH)		ITEM NO: N/A	
CANADA: 1-800-361-6975 (QUEBEC) 1-800-387-6487 (ALL OTHER PROVINCES)		CAT. NO: YS-LB (SEE TABLE)	
FOR PRODUCT INFO: http://www.burndy.com		DRAWN BY: R. PERRAULT 2/12/1996	
		CHECKER: K. HENRY 2/15/1996	
		DSN APRVL: C. PALAGI 2/14/1996	
		MFG APRVL: --	
		QA APRVL: D. VARIO 2/19/1996	
		MKT APRVL: L. HERRON 2/14/1996	
		PROD FAM: --	
		DRAWING NO	
		REV	
		PROJECT #: --	
		SIZE	
		DOCUMENT TYPE: SALES	
		REL LEVEL: Released	
		SE210454	
		SHEET 2 OF 2	
		A	