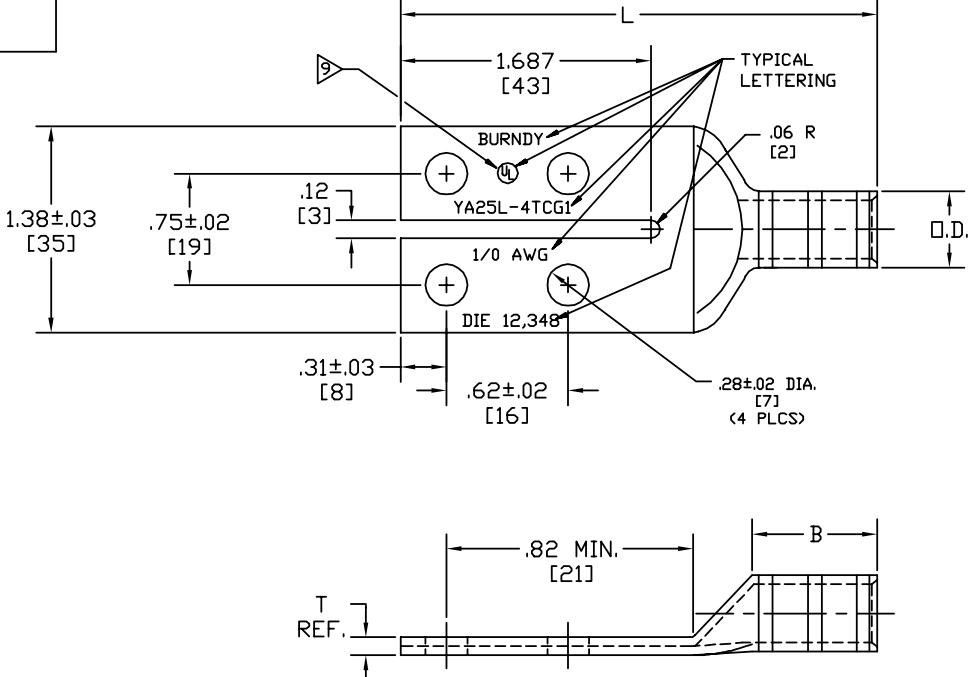


DRAWING NO.  
**SE211066-01**

CATALOG NUMBER	COLOR CODE	DIE INFORMATION		BURNDY INSTALLATION TOOLING (# CRIMPS)												WIRE STRIP LENGTH
		DIE INDEX	TYPE	MECHANICAL					HYDRAULIC					DIELESS (# CRIMPS)		
				OUR840	MD6 MD7	MD6--R2	MD7-34R	BCT500	Y34A Y34B Y34BH	Y35, Y39 Y750, Y46 PAT750, Y500CT	Y45	Y48B	Y60BHU			
YA25L-4TCG1	PINK	12 348	PINK DIE SET NEST INDENTOR	X25RT(2)	W25RT(2) W25VT(2)	W25RT(2) W25VT(2)	W25RT(2) W25VT(2)	X25RT(2) W25VT(2)	A25R(1)	U25RT(1) U2CABT(1)	U25RT(1) U2CABT(1)	-----	-----	MECHANICAL: MY29-3(1) MY29-11(1)  HYDRAULIC: Y644HSXT-18V (1) PAT644XT-18V (1)	15/16"	
YA26L-4TCG1	BLACK	13	BLACK DIE SET NEST INDENTOR	X26RT(2)	W26RT(2) W26VT(2)	W26RT(2) W26VT(2)	W26RT(2) W26VT(2)	X26RT(2) W26VT(2)	-----	U26RT(1)	U26RT(1)	-----	-----		1"	
YA27L-4TCG1	ORANGE	14	ORANGE DIE SET NEST INDENTOR	X27RT(3)	W27RT(2) W27VT(2)	W27RT(2) W27VT(2)	W27RT(2) W27VT(2)	X27RT(2) W27VT(2)	-----	U27RT(1)	U27RT(1)	-----	-----		1-1/16"	
YA28L-4TCG1	PURPLE	15	PURPLE DIE SET NEST INDENTOR	X28RT(3)	W28RT(2) W28VT(2)	W28RT(2) W28VT(2)	W28RT(2) W28VT(2)	X28RT(2) W28VT(2)	-----	U28RT(1)	U28RT(1)	C28R(1)	L28RT(1)		1-1/8"	
YA29L-4TCG1	YELLOW	16	YELLOW DIE SET NEST INDENTOR	X29RT(4)	W29VT(2)	W29RT(2) W29VT(2)	W29VT(2)	X29RT(2) W29RT(2) W29VT(2)	A29R(1)	U29RT(1)	U29RT(1)	C29R(1)	L29RT(1)		1-1/8"	
YA31L-4TCG1	RED	18 324	RED DIE SET NEST INDENTOR	-----	-----	W31RT(2) W31VT(2)	W31VT(2)	W31RT(2) W31VT(2)	-----	U31RT(2) U29ART(2)	U31RT(2) U29ART(2)	C31R92 C29AR(2)	L31RT(1) L29ART(1)		1-1/8"	

REV.	DATE	DESCRIPTION	ECO	BY	C'K'D.
C	5/5/2014	UPDATE TYPUS	36014	BSB	VK

CATALOG NUMBER	STRANDED COPPER CONDUCTOR ACCOMMODATED			BOLT SIZE	METRIC BOLT SIZE	DIMENSIONS			
	CODE (AWG)	NAVY	METRIC SIZE (CLASS 2)			B ±.08	L ±.12	O.D. ±.015	T REF
YA25L-4TCG1	1/0 AWG	100	-----	1/4	M6	.88 [22]	3.05 [77]	.51 [13]	.11 [3]
YA26L-4TCG1	2/0 AWG	125	70mm <sup>2</sup> STR [11]	1/4	M6	.94 [24]	3.15 [80]	.56 [14]	.21 [5]
YA27L-4TCG1	3/0 AWG	150	-----	1/4	M6	1.00 [25]	3.25 [82]	.62 [16]	.21 [5]
YA28L-4TCG1	4/0 AWG	200	-----	1/4	M6	1.00 [25]	3.29 [84]	.69 [18]	.21 [5]
YA29L-4TCG1	250 kcmil	250	120mm <sup>2</sup> STR [14]	1/4	M6	1.06 [27]	3.39 [86]	.75 [19]	.21 [5]
YA31L-4TCG1	350 kcmil	350	180mm <sup>2</sup> STR [18]	1/4	M6	1.06 [27]	3.46 [88]	.88 [22]	.21 [5]



- NOTES:**
- MATERIAL: COPPER
  - FINISH: TIN PLATED
  - CATALOG # PT6515 ADAPTOR IS REQUIRED TO USE "U" DIES IN Y45 SERIES TOOLS.
  - CATALOG # PUADP-1 ADAPTOR IS REQUIRED TO USE "U" DIES IN Y46 SERIES TOOLS.
  - Y35P3 INDENTOR ADAPTOR REQUIRED FOR Y34PR INDENTOR.
  - DIMENSIONS IN BRACKETS [ ] ARE IN MILLIMETERS ROUNDED OFF TO THE NEAREST MILLIMETER, UNLESS OTHERWISE NOTED, AND ARE FOR REFERENCE ONLY.
  - FOR USE BY CUSTOMERS THAT HAVE THIS HYPRESS™ NO NEW Y34A HYPRESS™ TOOLS ARE BEING PROCESSED. Y34A USES A--D TYPE NEST DIES.
  - "X", "W-RT", "W-VT", "U", & "L" DIE SETS ARE COLOR CODED. "A", "B" AND "C" DIES ARE NOT COLOR CODED. NESTS AND INDENTOR TYPE ARE NOT COLOR CODED.
  - UL 486A LISTED, FILE NO.E9498.

TO ORDER BURNDY® PRODUCTS CALL		HYLUG™ (4 HOLE-SPLIT PAD)	
UNITED STATES: 1-800-346-4175 (LONDONDERRY, NH)		ITEM NO: N/A	
CANADA: 1-800-361-6975 (QUEBEC) 1-800-387-6487 (ALL OTHER PROVINCES)		CAT NO: YA--L-4TCG1 (TABLE)	
FOR PRODUCT INFO: <a href="http://www.burndy.com">http://www.burndy.com</a>		SCALE: N/A	
		DRAWN BY: J WALTERS 10/8/97	
		CHECKER: J MICHAUD 10/8/97	
		DSN APPVL: K MELLO 10/8/97	
		MFG APPVL: --	
		QC APPVL: J BRODEUR 10/9/97	
		MKT APPVL: T NELSON 10/8/97	
		DRAWING NO	
		SE211066-01	
		REV	
		C	