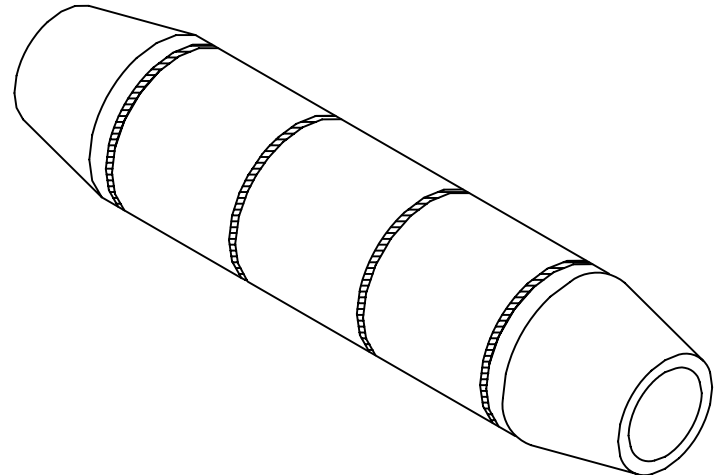
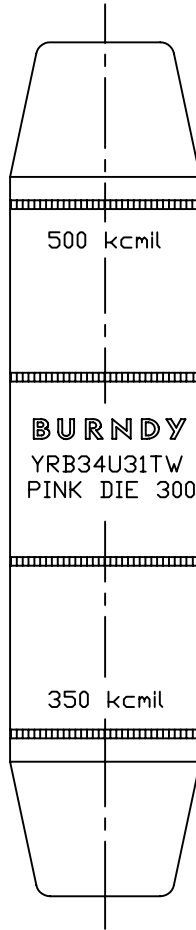
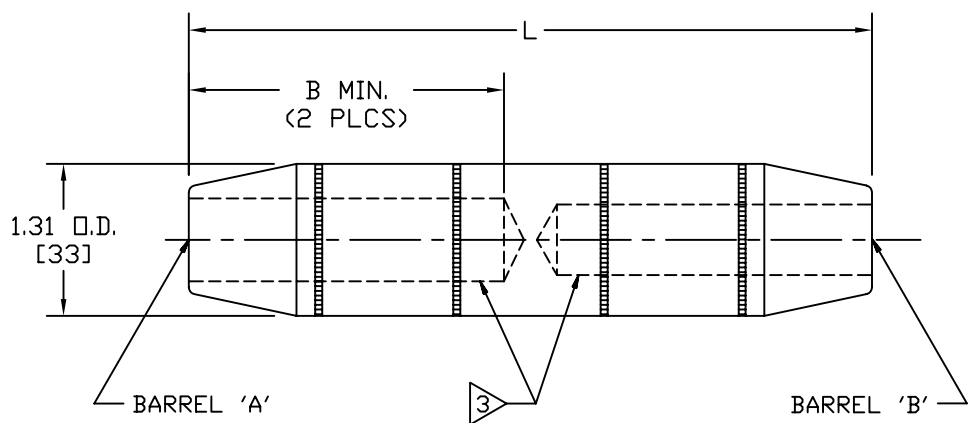


CATALOG NUMBER	CONDUCTOR RANGE		DIMENSIONS		WIRE STRIP LENGTH		DIE NUMBER
	BARREL "A" CU. & ALUM.	BARREL "B" CU. & ALUM.	B MIN.	L	BARREL "A"	BARREL "B"	
YRB34U25TW	500 kcmil (.813 DIA) 37 STR DR 500 kcmil CMPCT (.736 DIA) 19 STR ALUM; 37 STR ALUM. & CU.	1/0 (.373 DIA.) 19 STR	2.70 [69]	6.00 [152]	2-13/16"	2-13/16"	300
YRB34U28TW	500 kcmil (.813 DIA) 37 STR DR 500 kcmil CMPCT (.736 DIA) 19 STR ALUM; 37 STR ALUM. & CU.	4/0 (.528 DIA.) 19 STR DR 4/0 CMPCT (.475 DIA.) 19 STR					
YRB34U29TW	500 kcmil (.813 DIA) 37 STR DR 500 kcmil CMPCT (.736 DIA) 19 STR ALUM; 37 STR ALUM. & CU.	250 kcmil (.575 DIA.) 37 STR					
YRB34U30TW	500 kcmil (.813 DIA) 37 STR DR 500 kcmil CMPCT (.736 DIA) 19 STR ALUM; 37 STR ALUM. & CU.	300 kcmil (.630 DIA.) 37 STR					
YRB34U31TW	500 kcmil (.813 DIA) 37 STR DR 500 kcmil CMPCT (.736 DIA) 19 STR ALUM; 37 STR ALUM. & CU.	350 kcmil (.681 DIA) 37 STR DR 350 kcmil CMPCT (.616 DIA) 19 STR ALUM; 37 STR ALUM. & CU.					
YRB34U34TW	500 kcmil (.813 DIA) 37 STR DR 500 kcmil CMPCT (.736 DIA) 19 STR ALUM; 37 STR ALUM. & CU.	500 kcmil (.813 DIA) 37 STR DR 500 kcmil CMPCT (.736 DIA) 19 STR ALUM; 37 STR ALUM. & CU.					

COLOR CODE	DIE INFORMATION		HYDRAULIC				DIELESS (# OF CRIMPS)	
	DIE INDEX	TYPE	Y35, Y39 Y750, BAT35 BAT750	Y46	Y45	Y48B		Y60BHU
PINK	300	PINK DIE SET	U34ART OVERLAP CRIMP	U34ART OVERLAP CRIMP	U34ART OVERLAP CRIMP	C34AR (1)	L34ART (1)	HYDRAULIC: Y644M (1) BAT644M (1)



TYPICAL LETTERING VIEW

NOTES:

- MATERIAL: ALUMINUM
- FINISH: HOT-TIN DIPPED.
- BARRELS ARE PARTIALLY FILLED WITH PENETROX™ AND SEALED.
- SCRATCH BRUSHING OF ALL CONDUCTORS BEFORE MAKING INSTALLATION IS RECOMMENDED
- NOT FOR USE WITH COPPER TO COPPER APPLICATIONS.
- DIMENSIONS IN BRACKETS [] ARE IN MILLIMETERS ROUNDED OFF TO THE NEAREST MILLIMETER, UNLESS OTHERWISE NOTED, AND ARE FOR REFERENCE ONLY.
- CATALOG #PT6515 ADAPTOR IS REQUIRED TO USE "U" DIES IN Y45 SERIES TOOLS.
- CATALOG #PUADP-1 ADAPTOR IS REQUIRED TO USE "U" DIES IN Y46 SERIES TOOLS.

TO ORDER BURNDY® PRODUCTS CALL		HYREDUCER™																			
UNITED STATES: 1-800-346-4175 (LONDONDERRY, NH)		ITEM NO: N/A																			
CANADA: 1-800-361-6975 (QUEBEC) 1-800-387-6487 (ALL OTHER PROVINCES)		CAT NO: YRB--U--TW (TABLE)																			
FOR PRODUCT INFO: http://www.burndy.com		<table border="1"> <tr> <td>SCALE: NTS</td> <td rowspan="5"></td> </tr> <tr> <td>DRAWN BY: D BOISVERT 7/20/98</td> </tr> <tr> <td>CHECKER: J MICHAUD 8/5/98</td> </tr> <tr> <td>DSN APPVL: D WALTERS 7/13/98</td> </tr> <tr> <td>MFG APPVL: -- --</td> </tr> <tr> <td>QC APPVL: S GRAY 7/14/98</td> <td>DRAWING NO</td> </tr> <tr> <td>MKT APPVL: B HARGROOVE 7/14/98</td> <td>REV</td> </tr> <tr> <td>PROD FAM: --</td> <td>SE211534</td> </tr> <tr> <td>PROJECT #: --</td> <td>SIZE</td> </tr> <tr> <td>DOCUMENT TYPE: Sales</td> <td>D</td> </tr> <tr> <td>REL LEVEL: AutoCAD</td> <td>SHEET 4 OF 5</td> </tr> </table>		SCALE: NTS		DRAWN BY: D BOISVERT 7/20/98	CHECKER: J MICHAUD 8/5/98	DSN APPVL: D WALTERS 7/13/98	MFG APPVL: -- --	QC APPVL: S GRAY 7/14/98	DRAWING NO	MKT APPVL: B HARGROOVE 7/14/98	REV	PROD FAM: --	SE211534	PROJECT #: --	SIZE	DOCUMENT TYPE: Sales	D	REL LEVEL: AutoCAD	SHEET 4 OF 5
SCALE: NTS																					
DRAWN BY: D BOISVERT 7/20/98																					
CHECKER: J MICHAUD 8/5/98																					
DSN APPVL: D WALTERS 7/13/98																					
MFG APPVL: -- --																					
QC APPVL: S GRAY 7/14/98	DRAWING NO																				
MKT APPVL: B HARGROOVE 7/14/98	REV																				
PROD FAM: --	SE211534																				
PROJECT #: --	SIZE																				
DOCUMENT TYPE: Sales	D																				
REL LEVEL: AutoCAD	SHEET 4 OF 5																				

REV.	DATE	DESCRIPTION	ECO	BY	C'K'D.
D	01/04/04	CHNG. 1-1/8" TO 2-13/16" FOR WIRE STRIP LENGTH	9193	DB	PL