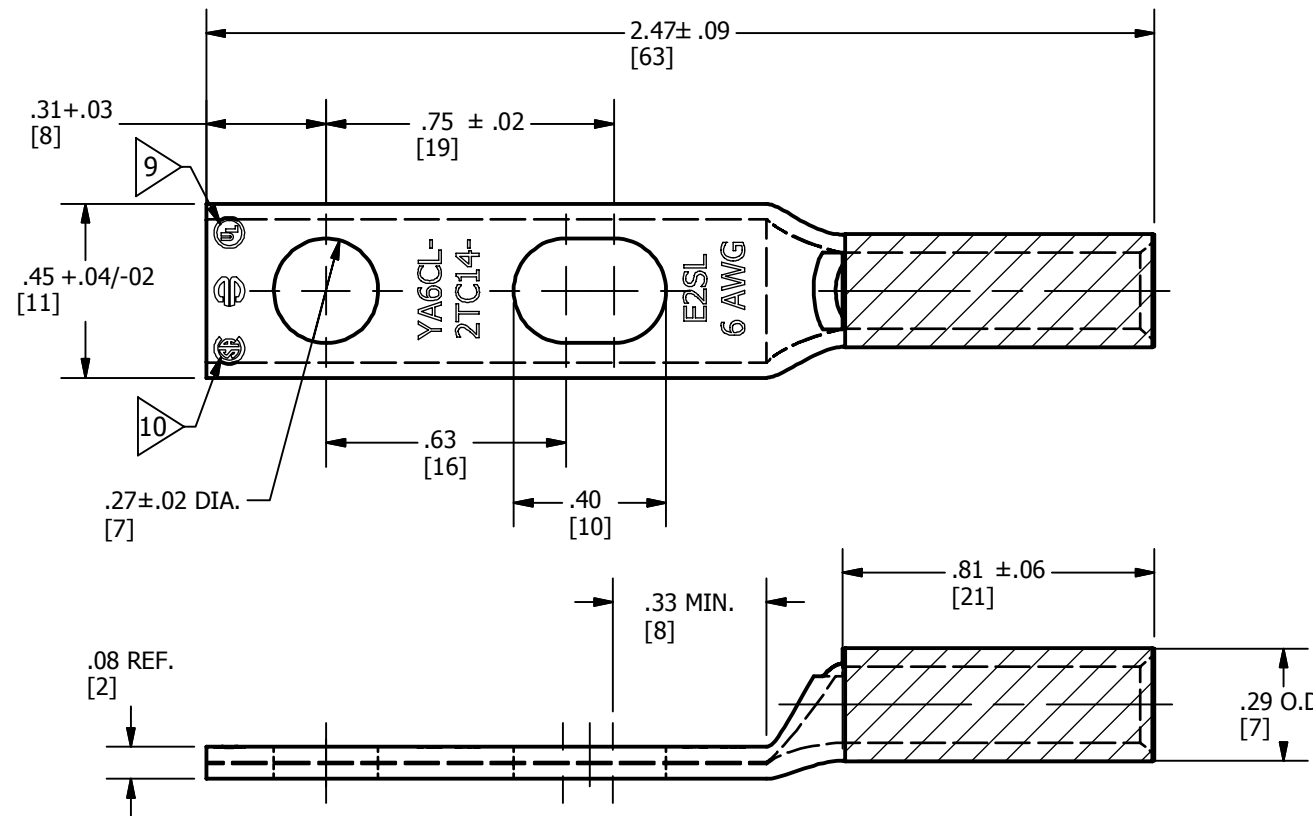


INSTALLATION TOOLING (# CRIMPS)

COLOR CODE	DIE INFORMATION		MECHANICAL					HYDRAULIC					DIELESS (# CRIMPS)
	DIE INDEX	TYPE	Y1MRTC Y122CMR	OUR840	MD6 MD7	MD6--R2	MD7-34R	Y500CT PAT600	Y34A, Y34B, Y34BH	Y35, Y39, Y750 PAT750	Y46	Y45	
BLUE	7 OR 374	BLUE DIE SET	BLUE (1)	X5CRT (1) X8CABT (1)	W5CRT (1) W5CVT (1)	W5CRT (1) W5CVT (1)	W5CRT (1) W5CVT (1)	X5CRT (1) W5CRT (1) W5CVT (1)	--	U5CRT (1) U8CABT (1)	U5CRT (1) U8CABT (1)	U5CRT (1) U8CABT (1)	MECHANICAL: MY29-3 (1) MY29-11 (1) HYDRAULIC: Y644M (1), BAT644M (1)
		NEST	--	--	--	--	--	--	B6CD (1), A6CD (1)	U6CD-1 (1)	U6CD-1 (1)	U6CD-1 (1)	
		INDENTOR	--	--	--	--	--	--	Y34PR	Y34PR	Y34PR	Y34PR	

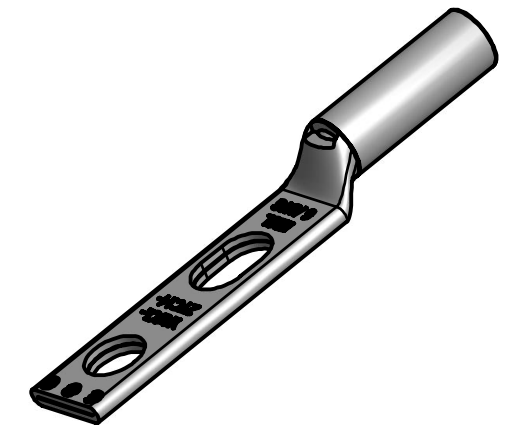
REV	DATE	DESCRIPTION	ECO	BY	CHK.
B	06/16/2015	CHANGE #6 AWG TO STATE #6 STR/#6 SOL. ADD Y122CMR TOOL IF APPLICABLE.	40605	ARJ	DD

COPPER CONDUCTOR ACCOMMODATED		BOLT SIZE	METRIC BOLT SIZE
CODE (AWG)	METRIC SIZE (CLASS 2)	1/4	M6
#6 AWG STR/SOL	--		



NOTES:

- MATERIAL: COPPER TUBING.
- FINISH: TIN PLATED.
- CATALOG # PT6515 ADAPTOR IS REQUIRED TO USE "U" DIES IN Y45 SERIES TOOLS.
- CATALOG # PUADP-1 IS REQUIRED TO USE "U" DIES IN Y46 SERIES TOOLS.
- Y35P3 INEDENTOR ADAPTOR PEQUIRED FOR Y34PR INDENTOR.
- PERMANENT DIE IN TOOLING.
- DIMENSIONS IN BRACKETS [] ARE IN MILLIMETERS ROUNDED OFF TO THE NEAREST MILLIMETER, UNLESS OTHERWISE SPECIFIED AND ARE FOR REFERENCE ONLY.
- FOR USE BY CUSTOMERS THAT HAVE THIS HYPRESS™. NO NEW Y34A HYPRESS™ TOOLS ARE BEING PROCESSED. Y34A USES A--D TYPE NEST DIES.
- CONNECTORS ARE "UL" LISTED.
- CONNECTORS ARE "CSA" CERTIFIED.
- "X", "W-RT", "W-VT" & "U" DIE SETS ARE CODED. "A" & "B" DIES ARE NOT COLOR CODED. NESTS AND INDENTOR TYPE ARE NOT COLOR CODED.
- DO NOT USE PAT644 OR Y644 TOOLING WITH 6 AWG SOL.



TO ORDER BURNDY® PRODUCTS CALL		HYLUG™	
UNITED STATES 1-800-346-4175 (LONDONDERRY, NH)		ITEM NO: 25015139	
CANADA: 1-800-361-6975 (QUEBEC) 1-800-387-6487 (ALL OTHER PROVINCES)		CAT. NO: YA6CL2TC14E2SL	
FOR PRODUCT INFO: http://www.burndy.com		DRAWN BY: D. BOISVERT 07/02/1999	
		CHECKER: J. MICHAUD 07/02/1999	
		DSN APRVL: B. MACDONALD 07/02/1999	
		MFG APRVL: S. HOLLOWAY 07/02/1999	
		QA APRVL: J. BRODEUR 07/07/1999	
		MKT APRVL: --	
		PROD FAM: --	
		DRAWING NO	
		REV	
		SE212222-01	
		B	
		SHEET 1 OF 1	