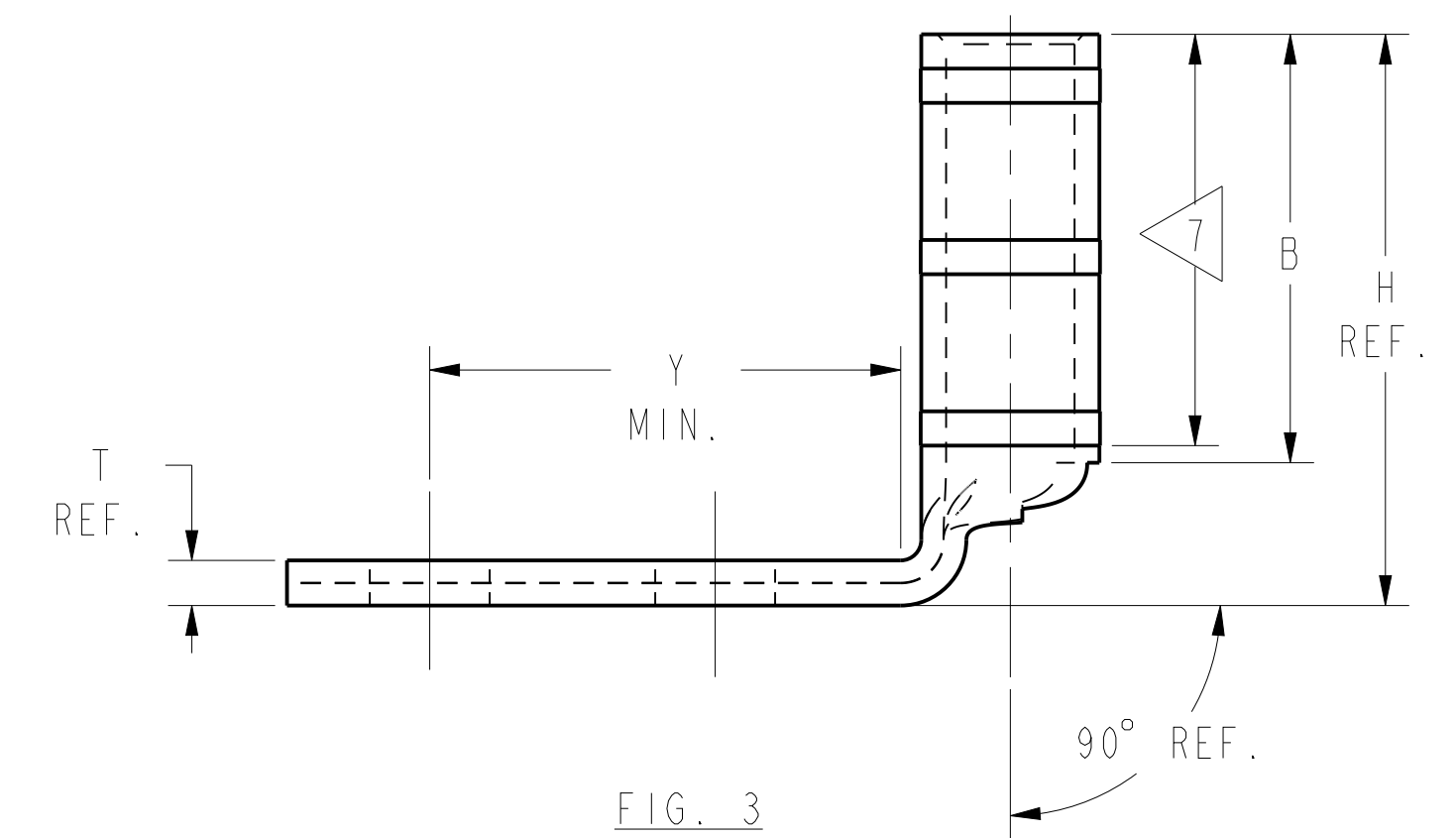
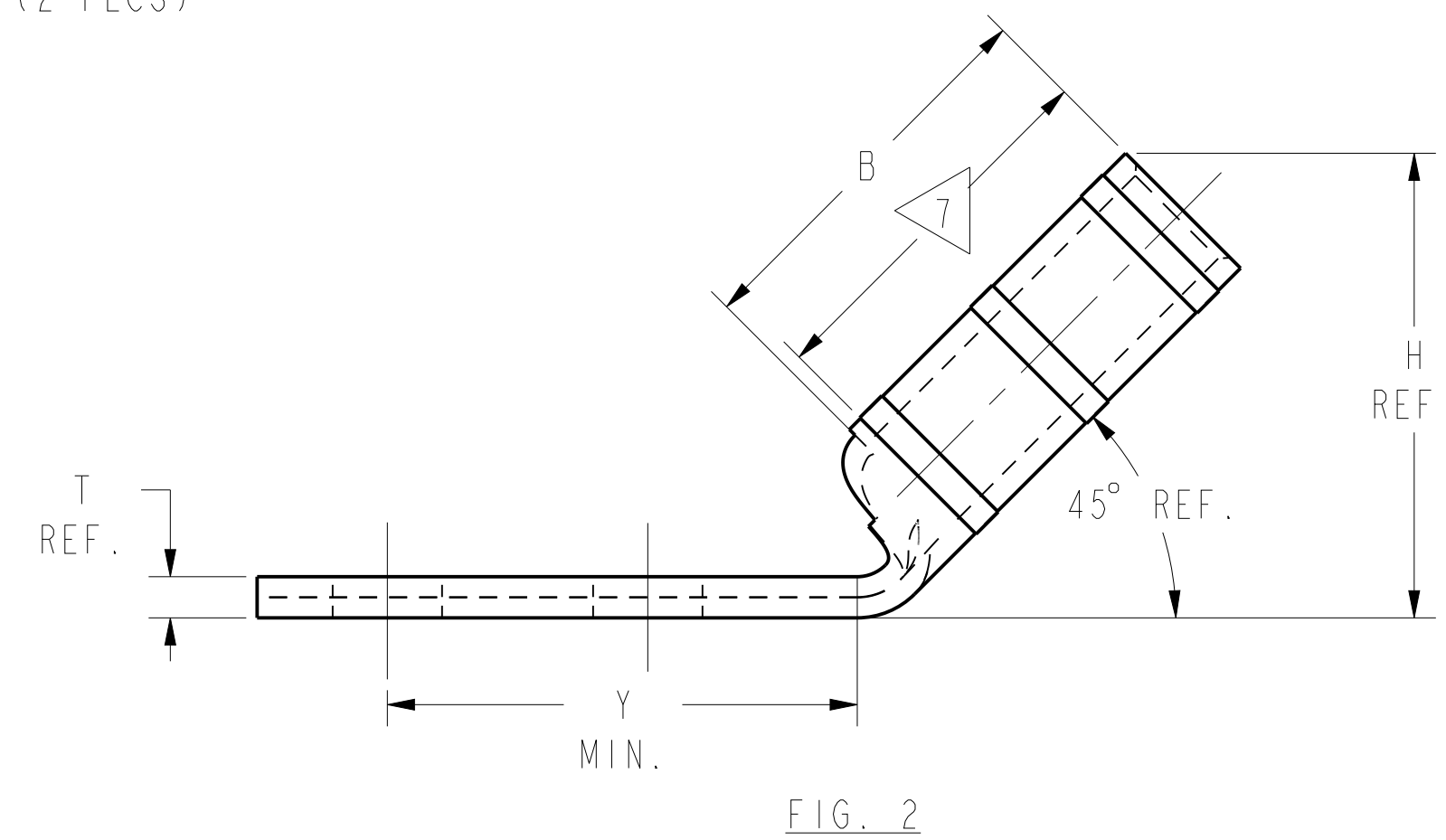
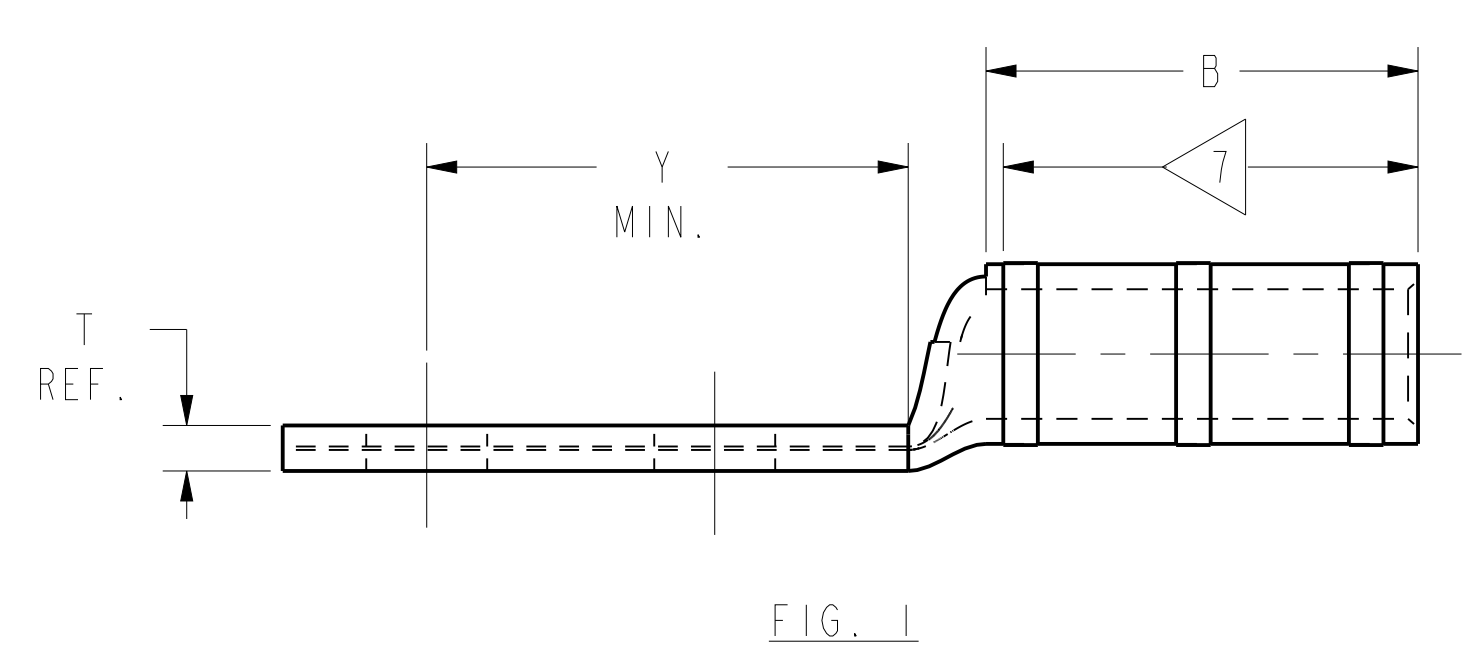
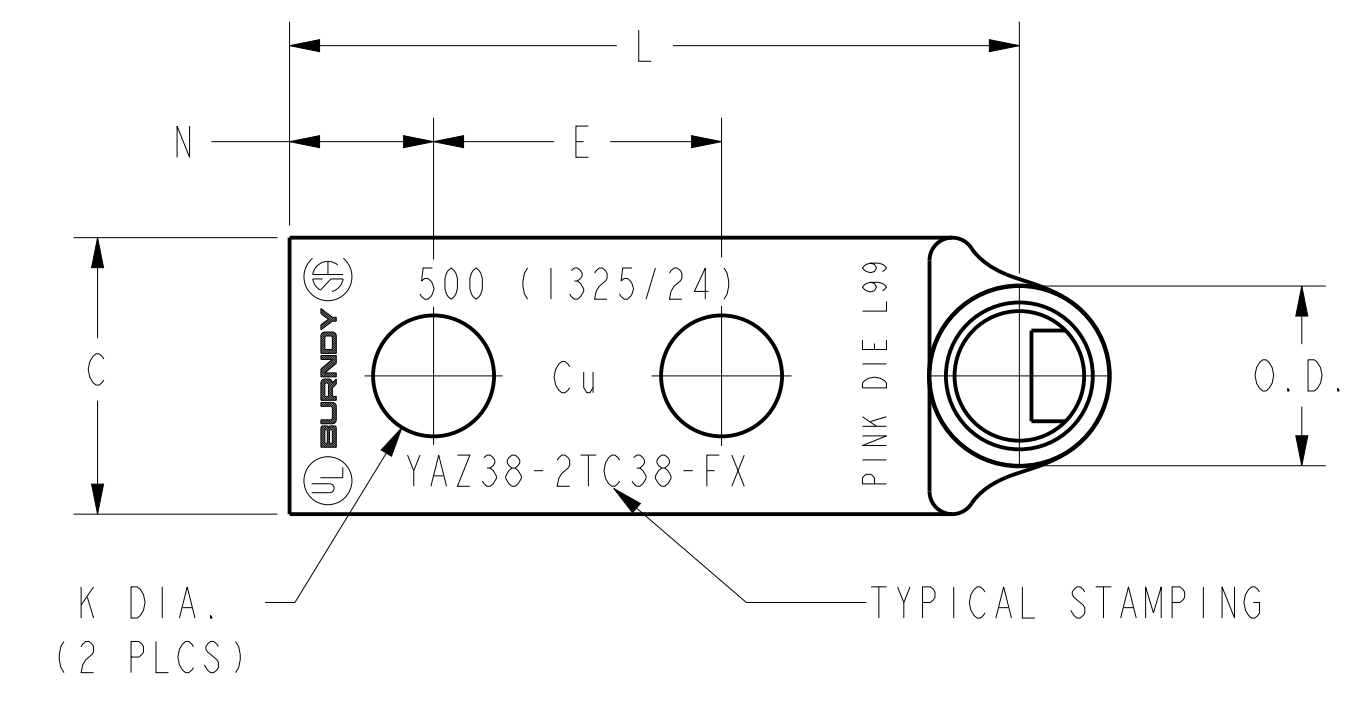
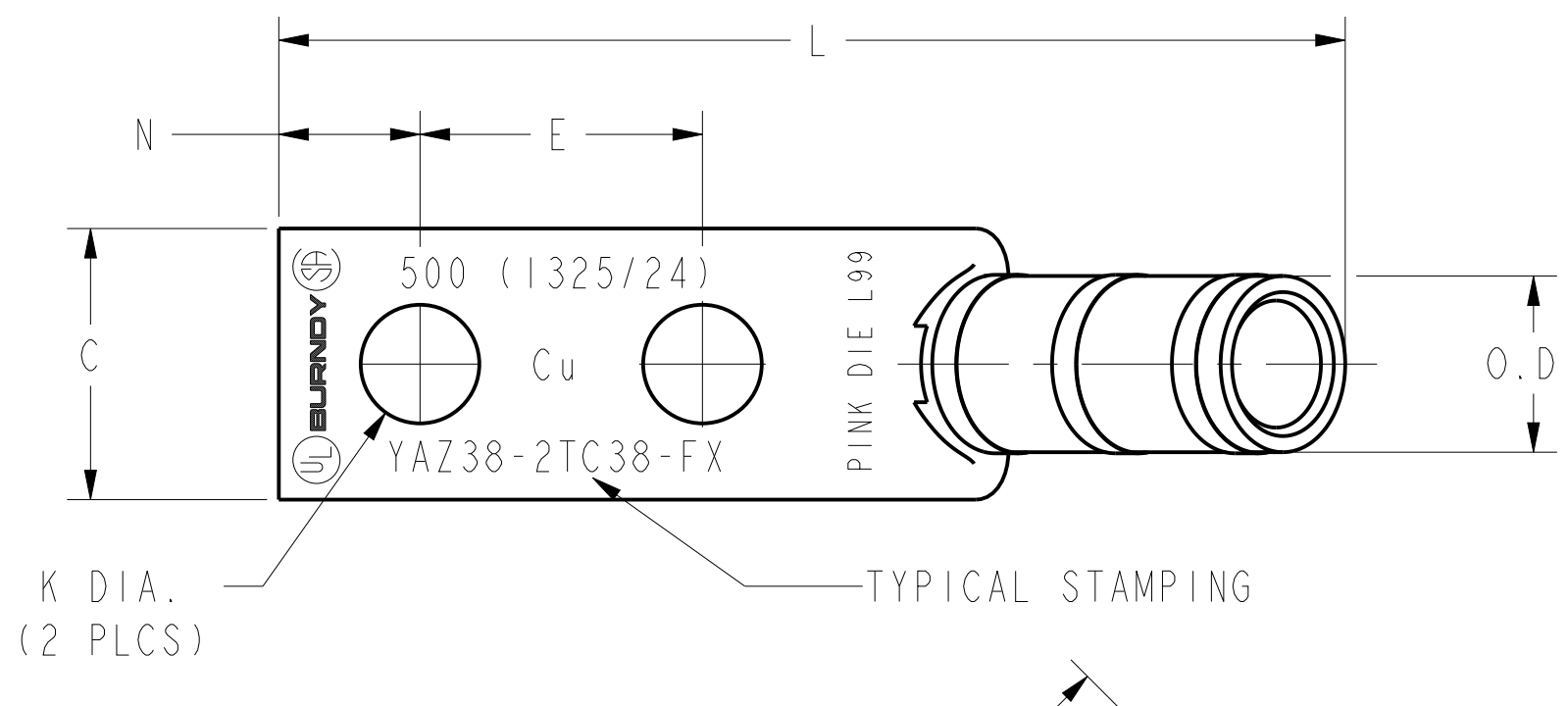
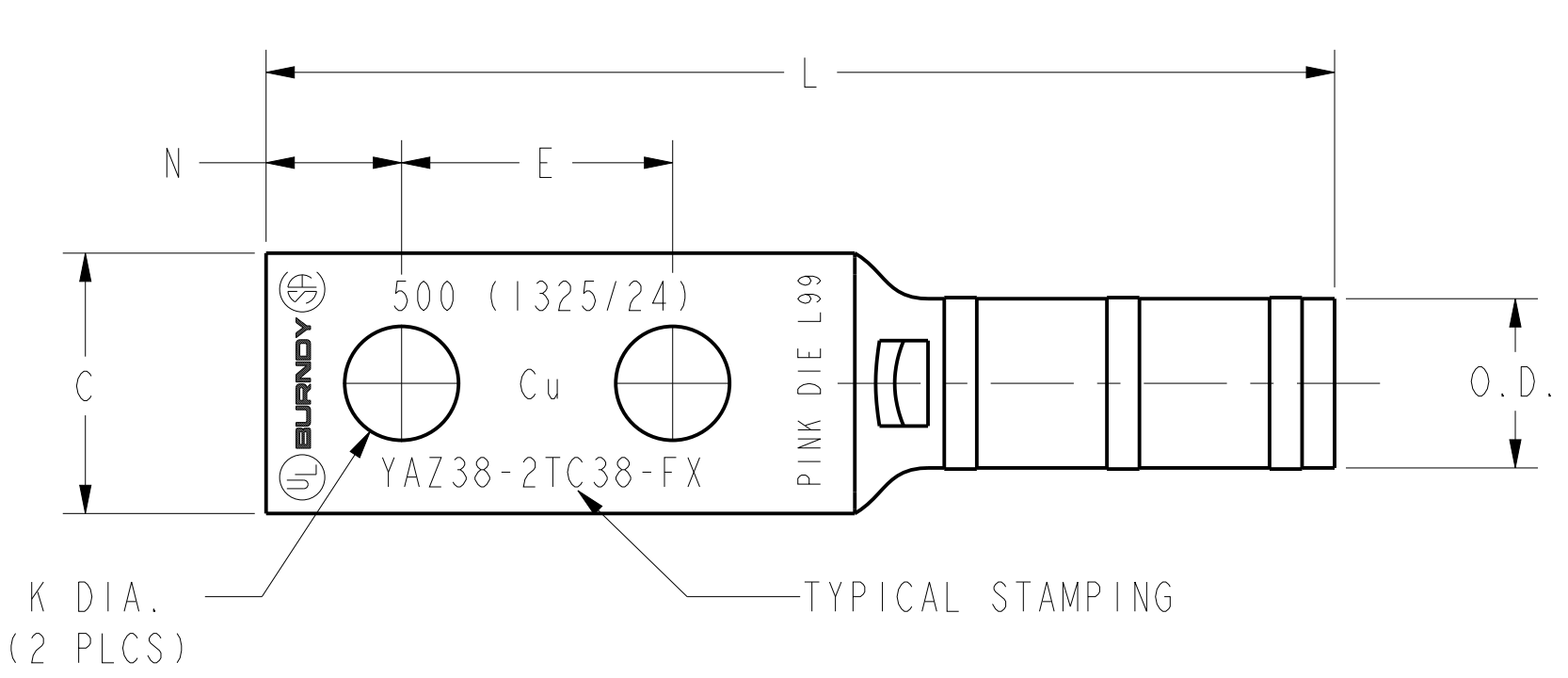


REV	DATE	DESCRIPTION	ECO	BY	C'K
D	08/25/2022 00:00:00 AM	UPDATED AS PER THE MARKUP	220823023337	YR	RA

CATALOG NO.	CONDUCTOR		BOLT SIZE	FIG. NO.	DIMENSIONS									INSTALLATION TOOLING (# CRIMPS)											
	FLEX	CODE (AWG)			B ±.09	C ±.06	E ±.02	H REF.	K DIA. ±.02	L ±.15	N ±.06	O.D. ±.01	T REF.	Y MIN.	DIE INDEX	COLOR CODE	HYDRAULIC			DIELESS (# CRIMPS)	WIRE STRIP LENGTH				
YAZ382ENT38FX	535.3 kcmil 1325/24 500 kcmil FLEX	--	3/8 [M10]	1	2.81 [71]	1.46 [37]	1.00 [25]	--	.41 [10]	5.72 [145]	.50 [13]	1.25 [32]	.27 [7]	1.52 [39]	L99	PINK	Y750 Y35, BAT35 Y39, BAT750 PAT750	Y46 PAT46	Y45			2-7/8			
YAZ382NT38FX				1																					
YAZ382NT38FX45				2	1.62 [41]			3.57 [91]			5.26 [134]														
YAZ382NT38FX90				3				4.16 [106]			2.84 [72]														
YAZ382TC38FX				1								5.72 [145]													
YAZ382TC38FX45				2	1.84 [47]			3.57 [91]			5.26 [134]														
YAZ382TC38FX90				3								2.84 [72]				1.52 [39]									
YAZ382NT38E16FX	535.3 kcmil 1325/24 500 kcmil FLEX	--		1	2.81 [71]	1.46 [37]	1.75 [44]	--	.41 [10]	6.47 [164]	.50 [13]	1.25 [32]	.27 [7]	2.28 [58]	L99	PINK						2-7/8			



- NOTES:
- MATERIAL: COPPER TUBING.
  - FINISH: TIN PLATED.
  - CATALOG # PT6515 ADAPTOR IS REQUIRED TO USE "U" DIES IN Y45 SERIES TOOLS.
  - CATALOG # PUADP-1 ADAPTOR IS REQUIRED TO USE "U" DIES IN Y46 SERIES TOOLS.
  - PERMANENT DIE IN TOOLING.
  - DIMENSIONS IN BRACKETS [ ] ARE IN MILLIMETERS ROUNDED OFF TO THE NEAREST MILLIMETER, UNLESS OTHERWISE NOTED, AND ARE FOR REFERENCE ONLY.
  - CRIMP (# OF CRIMPS PER TABLE) WITHIN THE LENGTH BETWEEN THE INK STAMPED CRIMPING AREA.

TO ORDER BURNDY@PRODUCTS CALL		HYLUG™ (TWO HOLE FLEX)	
UNITED STATES: 1-800-346-4175 (LONDONDERRY, NH)		ITEM NO: N/A	CAT. NO: YAZ38--- (TABLE)
CANADA: 1-800-361-6975 (QUEBEC) 1-800-387-6487 (ALL OTHER PROVINCES)		DRAWN BY: D BOISVERT 8/19/99	CHECKER: B MICHAUD 8/31/99
FOR PRODUCT INFO: <a href="http://www.burndy.com">http://www.burndy.com</a>		DSN APPVL: RR TEAM 9/28/99	MFG APPVL: --
		GA APPVL: J BRODEUR 10/6/99	MKT APPVL: R ROBICHEAU 10/5/99
		PROD FAM: --	SCALE: NTS
		PROJECT #: --	SIZE: D
		DOCUMENT TYPE: Sales	DRAWING NO: SE212273
		REL LEVEL: Released	SHEET 40 OF 48

REV: CREO 08/10/21