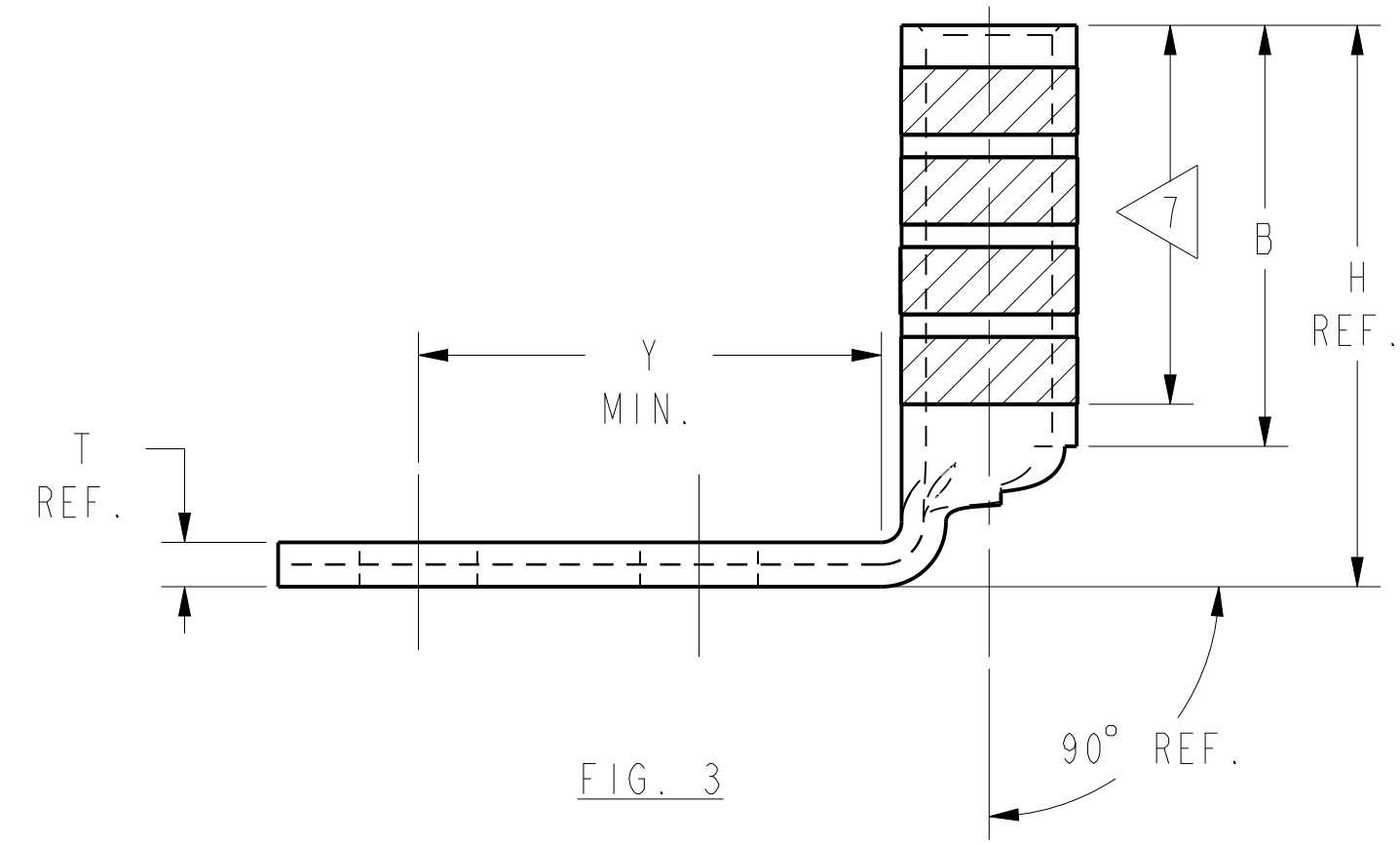
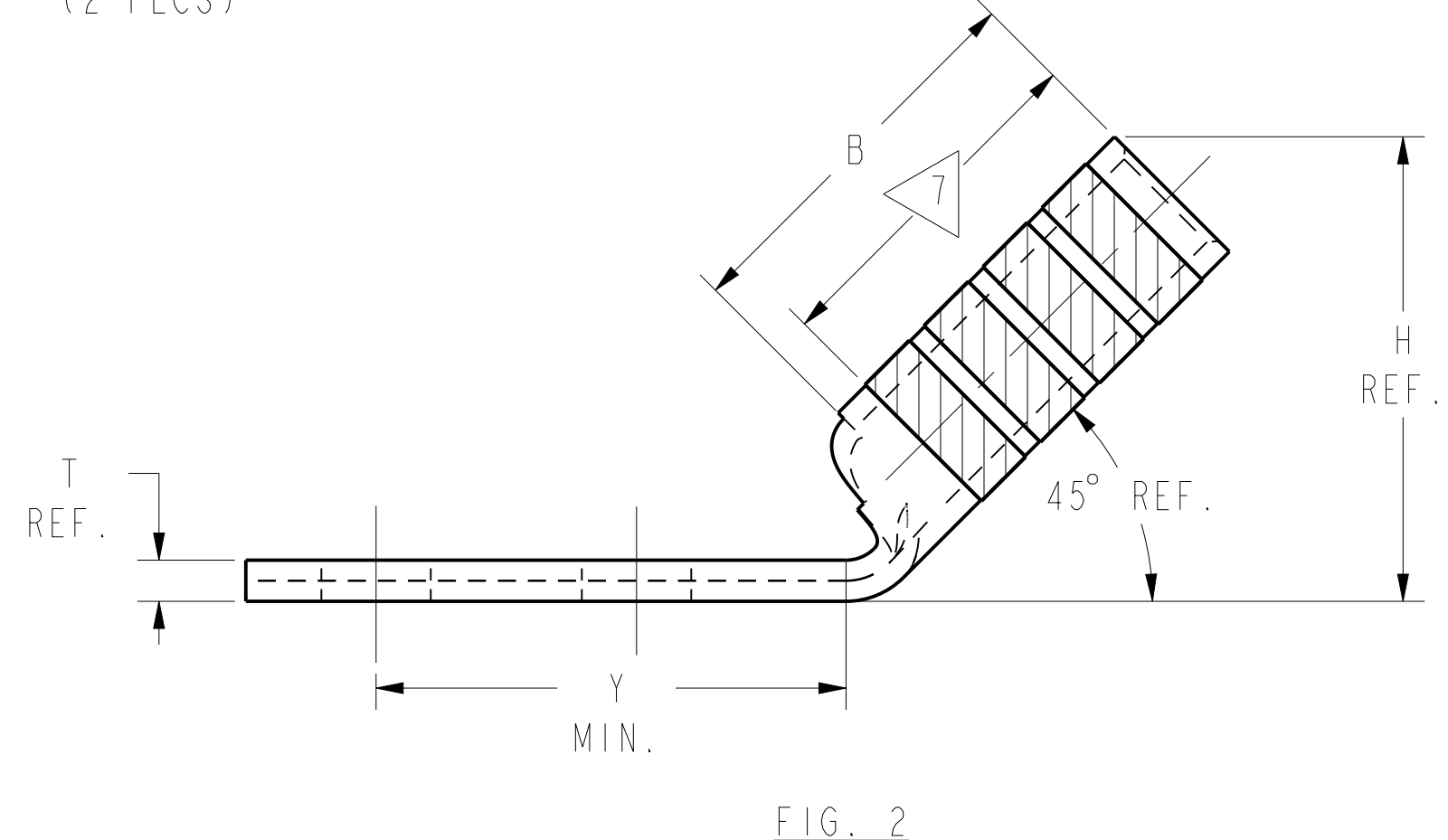
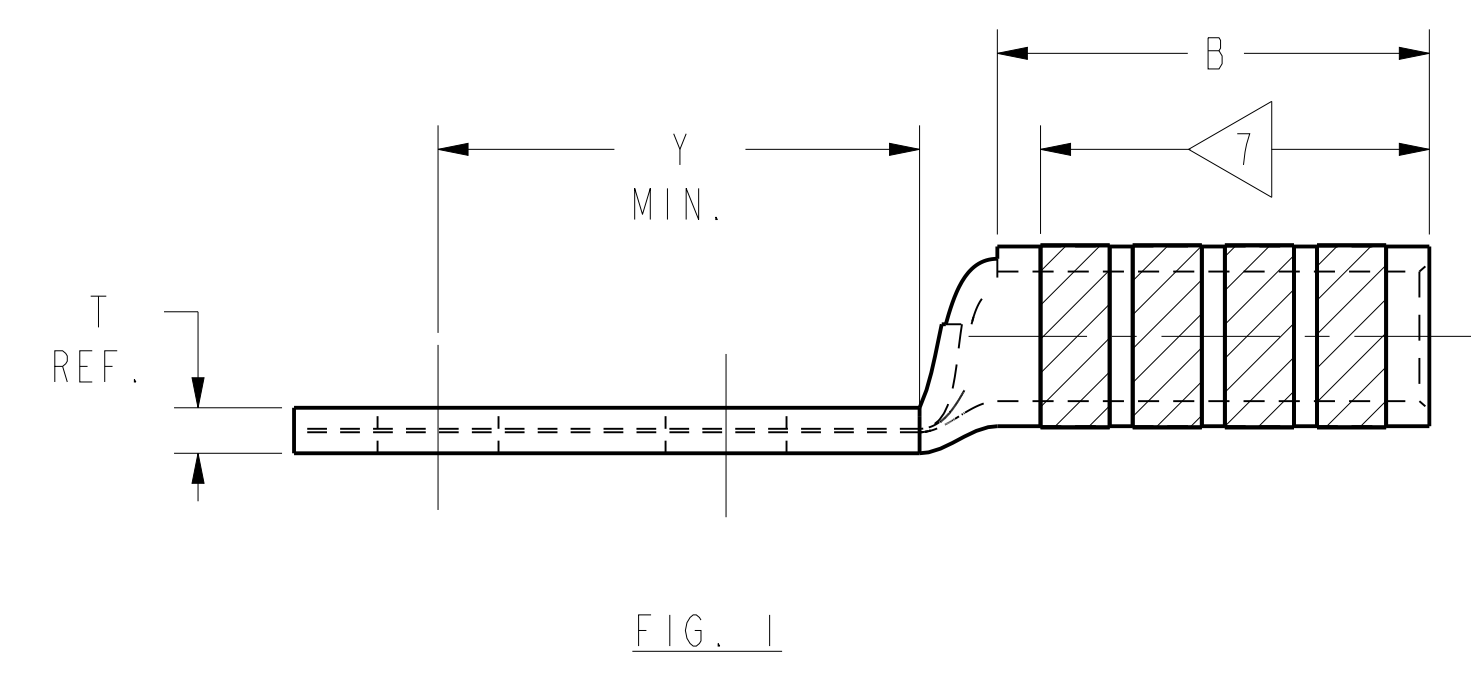
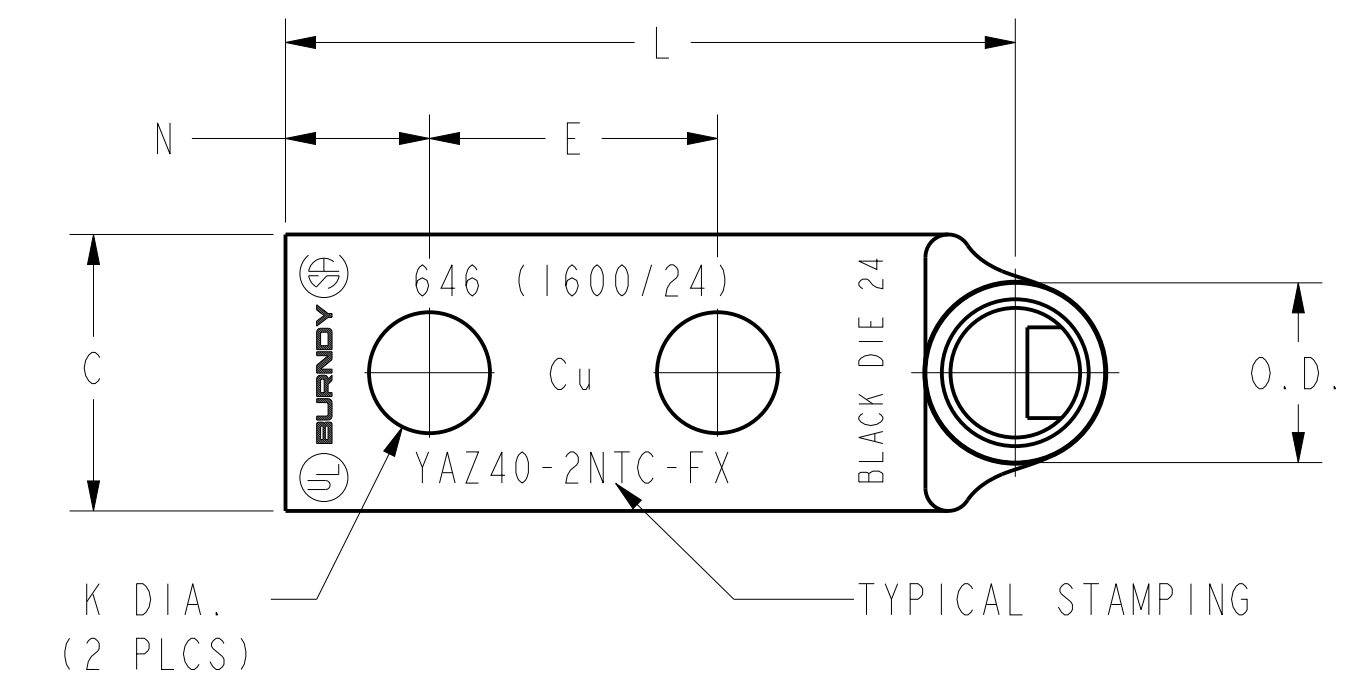
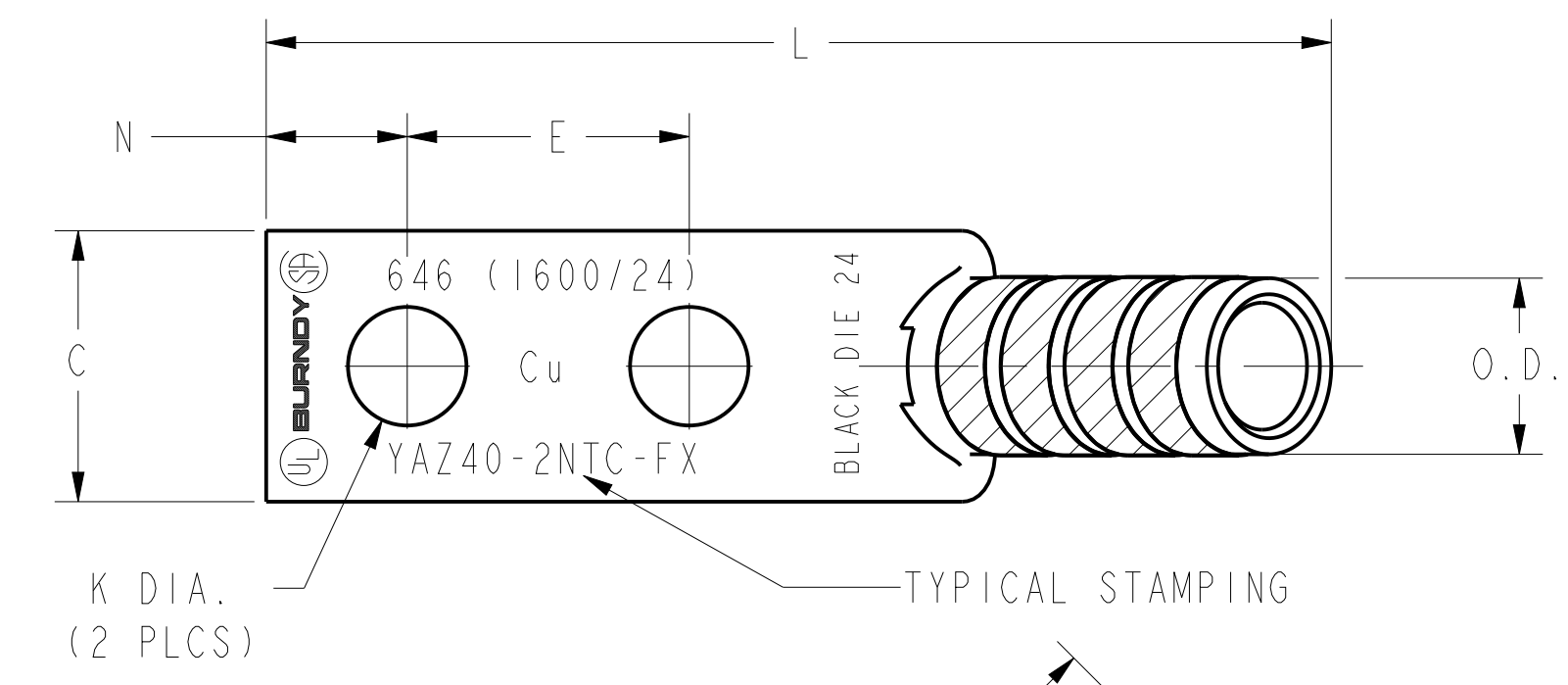
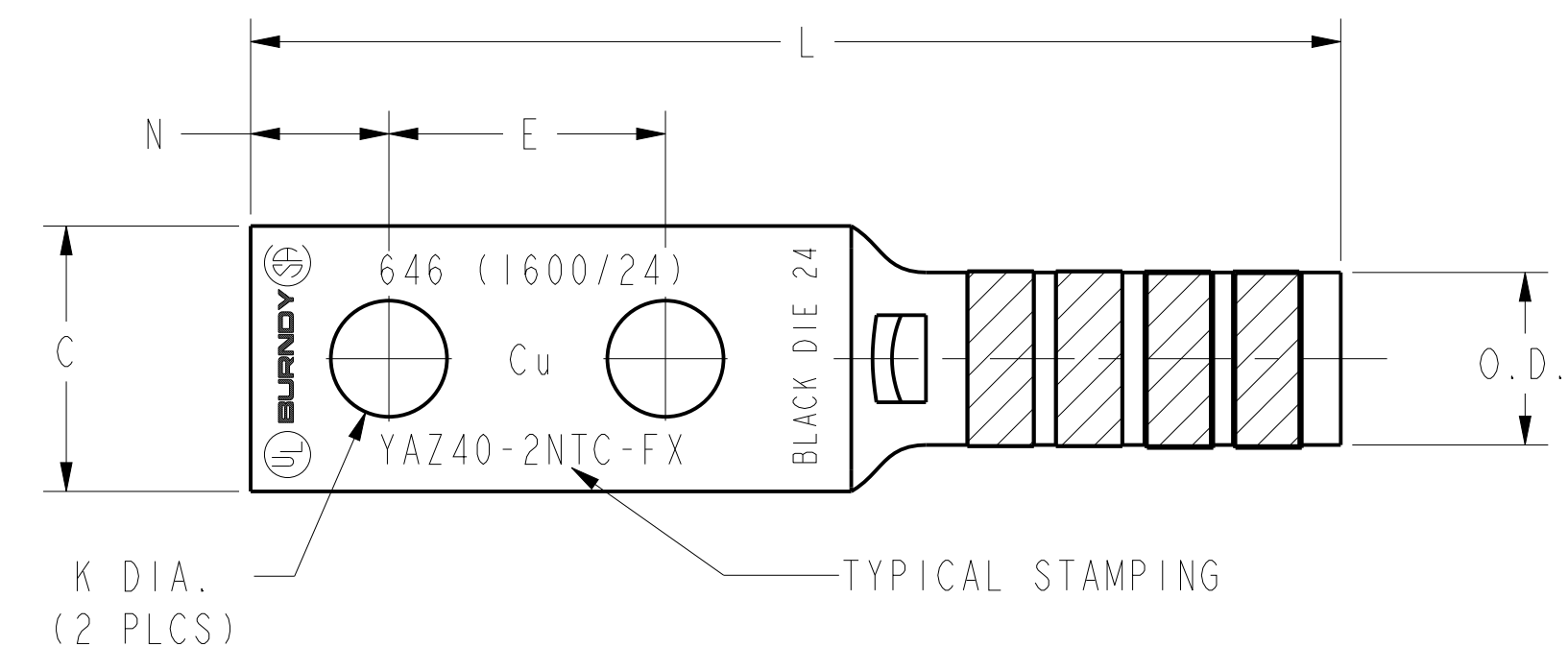


REV	DATE	DESCRIPTION	ECO	BY	C'HR.
C	2020-09-04 00:00:00 EDT	MU UPDATION	54204	SS	YR

CATALOG NO.	CONDUCTOR		BOLT SIZE	FIG. NO.	DIMENSIONS										INSTALLATION TOOLING (# CRIMPS)							
	FLEX	CODE (AWG)			B ±.09	C ±.06	E ±.02	H REF.	K DIA. ±.02	L ±.15	N ±.06	O.D. ±.01	T REF.	Y MIN.	DIE INDEX	COLOR CODE	MECHANICAL		HYDRAULIC		DIELESS (# CRIMPS)	WIRE STRIP LENGTH
YAZ402NTCFX	646 kcmil 1600/24 650 kcmil FLEX	---	1/2 [M12]	1	---	---	---	---	6.89 [175]	---	---	---	---	---	---	---	---	---	---	HYDRAULIC: Y81KFT(3), PAT81KFT(3) Y644, Y644M Y644MBH, (1)	3"	
YAZ402NTCFX45				2	2.94 [75]	1.98 [39]	1.75 [44]	3.78 [96]	.56 [14]	6.46 [164]	.62 [16]	1.35 [34]	.30 [8]	2.40 [61]	24	BLACK	MD7-34R 7	Y750 Y35, BAT35 Y39, BAT750 7	Y46 4 7			Y45 3 7
YAZ402NTCFX90				3	4.40 [112]	---	---	---	---	3.91 [99]	---	---	---	---	---	---	---	U39RT (4)	U39RT (4)			U39RT (4)



- NOTES:
- MATERIAL: COPPER TUBING.
  - FINISH: TIN PLATED.
  - CATALOG # PT6515 ADAPTOR IS REQUIRED TO USE "U" DIES IN Y45 SERIES TOOLS.
  - CATALOG # PUADP-1 ADAPTOR IS REQUIRED TO USE "U" DIES IN Y46 SERIES TOOLS.
  - PERMANENT DIE IN TOOLING.
  - DIMENSIONS IN BRACKETS [ ] ARE IN MILLIMETERS ROUNDED OFF TO THE NEAREST MILLIMETER, UNLESS OTHERWISE NOTED, AND ARE FOR REFERENCE ONLY.
  - CRIMP (# OF CRIMPS PER TABLE) WITHIN THE LENGTH BETWEEN THE INK STAMPED CRIMPING AREA.

TO ORDER BURNDY® PRODUCTS CALL		HYLUG™ (TWO HOLE FLEX)	
UNITED STATES 1-800-346-4175 (LONDONDERRY, NH)		ITEM NO: N/A	CAT. NO: YAZ40- (TABLE)
CANADA: 1-800-361-6975 (QUEBEC) 1-800-387-6487 (ALL OTHER PROVINCES)		DRAWN BY: B MICHAUD 8/25/99	CHECKER: D BOISVERT 8/26/99
FOR PRODUCT INFO: <a href="http://www.burndy.com">http://www.burndy.com</a>		DSN APPVL: RR TEAM 9/28/99	MFG APPVL: --
		GA APPVL: J BRODEUR 10/6/99	MKT APPVL: R ROBICHEAU 10/5/99
		PROD FAM: --	SCALE: NTS
		PROJECT #: --	SIZE: D
		DOCUMENT TYPE: Sales	DRAWING NO: SE212273
		REL LEVEL: Released	SHEET 45 OF 48

REV: PEO200

A

D

D

C

C

B

B

A