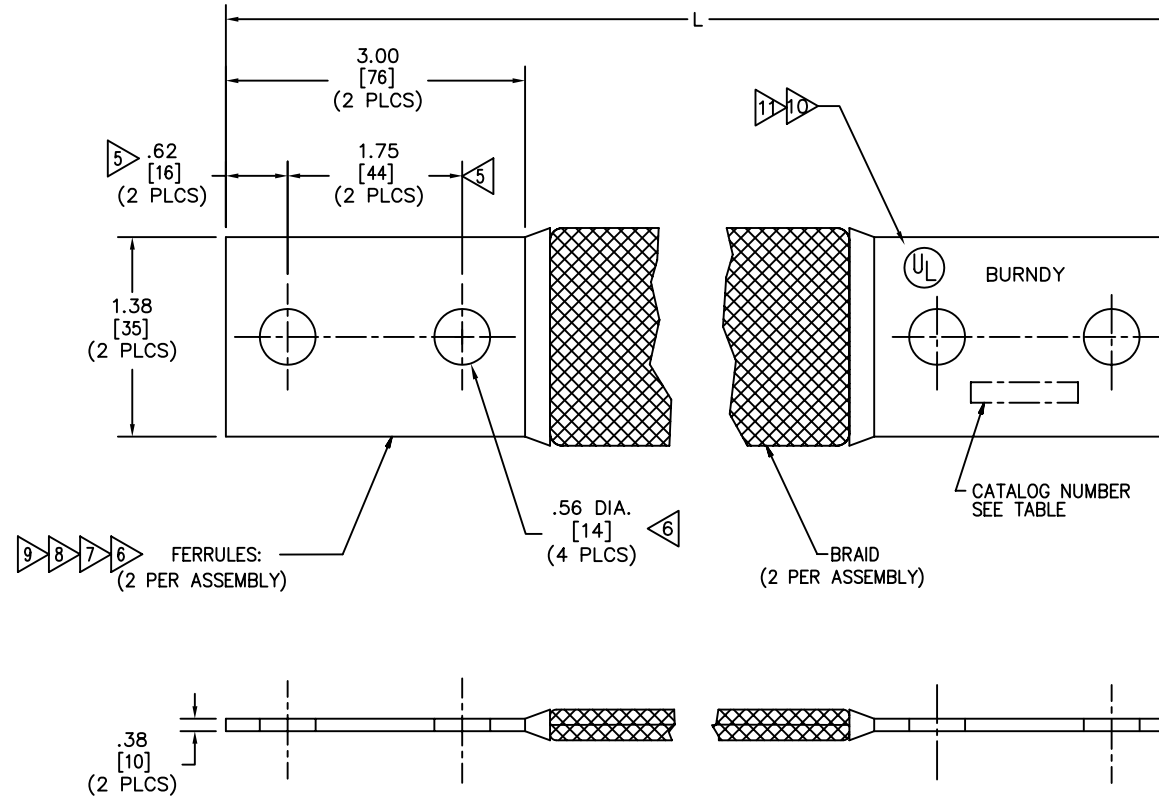


DRAWING NO. SE212512-01	
TABLE	
CATALOG NO.	L
B2F9N	9.00 [229]
B2F10N	10.00 [254]
B2F10D75N	10.75 [273]
B2F11N	11.00 [279]
B2F11D75N	11.75 [298]
B2F12N	12.00 [305]
B2F12D25N	12.25 [311]
B2F12D75N	12.75 [324]
B2F13N	13.00 [330]
B2F13D75N	13.75 [349]
B2F14N	14.00 [356]
B2F15N	15.00 [381]
B2F16N	16.00 [406]
B2F18N	18.00 [457]
B2F20N	20.00 [508]
B2F21N	21.00 [533]
B2F22N	22.00 [559]
B2F24N	24.00 [610]
B2F28N	28.00 [711]
B2F30N	30.00 [762]
B2F32N	32.00 [813]
B2F36N	36.00 [914]
B2F40N	40.00 [1016]
B2F42N	42.00 [1067]
B2F44N	44.00 [1118]
B2F48N	48.00 [1219]
B2F106N	106.00 [2692]
B2F161N	161.00 [4089]
B2F179N	179.00 [4547]

REV.	DATE	DESCRIPTION	ECO	BY	C'K'D.
A	07/13/06	ADD NOTES 10 AND 11 TO DRAWING.	13059	RB	PL



NOTES:

- MATERIAL: FERRULES - COPPER  
BRAID - TINNED COPPER
- FINISH: UNPLATED
- APPROXIMATE AMP RATING: INDOOR = 600, OUTDOOR = 720. THIS RATING MAY VARY WITH AMBIENT CONDITIONS, ORIENTATION OF THE BRAID AND OTHER SERVICE CONDITIONS.
- DIMENSIONS IN BRACKETS [ ] ARE IN MILLIMETERS ROUNDED OFF TO THE NEAREST MILLIMETER, UNLESS OTHERWISE NOTED, AND ARE FOR REFERENCE ONLY.

5 ADD SUFFIX LETTER "U" AFTER "N" FOR UNDRILLED VERSIONS.  
EXAMPLES: B2F9NU OR B2FNUTN.

6 SUFFIX "NK" DENOTES NICKEL PLATED FERRULES.

7 SUFFIX "SV" DENOTES SILVER PLATED FERRULES.

8 SUFFIX "TN" DENOTES TIN PLATED FERRULES.

9 SUFFIX "W" DENOTES HOT-TIN DIPPED FERRULES.

10 ALL SIZES ARE LISTED TO UL 467 GROUNDING & BONDING EQUIPMENT STANDARDS.

11 BRAID SIZES MAY BE DESIGNATED BY SUFFIXES REPRESENTING VARIATIONS IN LENGTH, QUANTITY & SIZE OF MOUNTING HOLES, PAD SIZE AND FINISH. (REF. NOTES 4 & 5)

TO ORDER BURNDY PRODUCTS CALL 1-800-346-4175  
MANCHESTER, NH 03109, USA  
FOR PRODUCT INFO = <http://www.burndy.com>

FLEXIBLE BRAID

ITEM NO: N/A

CAT NO: B2F--N (TABLE)

SCALE: NTS

DRAWN BY: P. LAPONIUS 05/02/00

CHECKER: B. MICHAUD 05/04/00

DSN APPVL: J. MICHAUD 05/04/00

MFG APPVL: N/A --

QC APPVL: J. BRODEUR 04/05/00

MKT APPVL: D. HAMILTON 04/05/00



PROJ. # --

DOC. TYPE: Sales

REL. LEVEL: AutoCAD

DRAWING NO

REV

SE212512-01

SHEET 1 OF 1

A