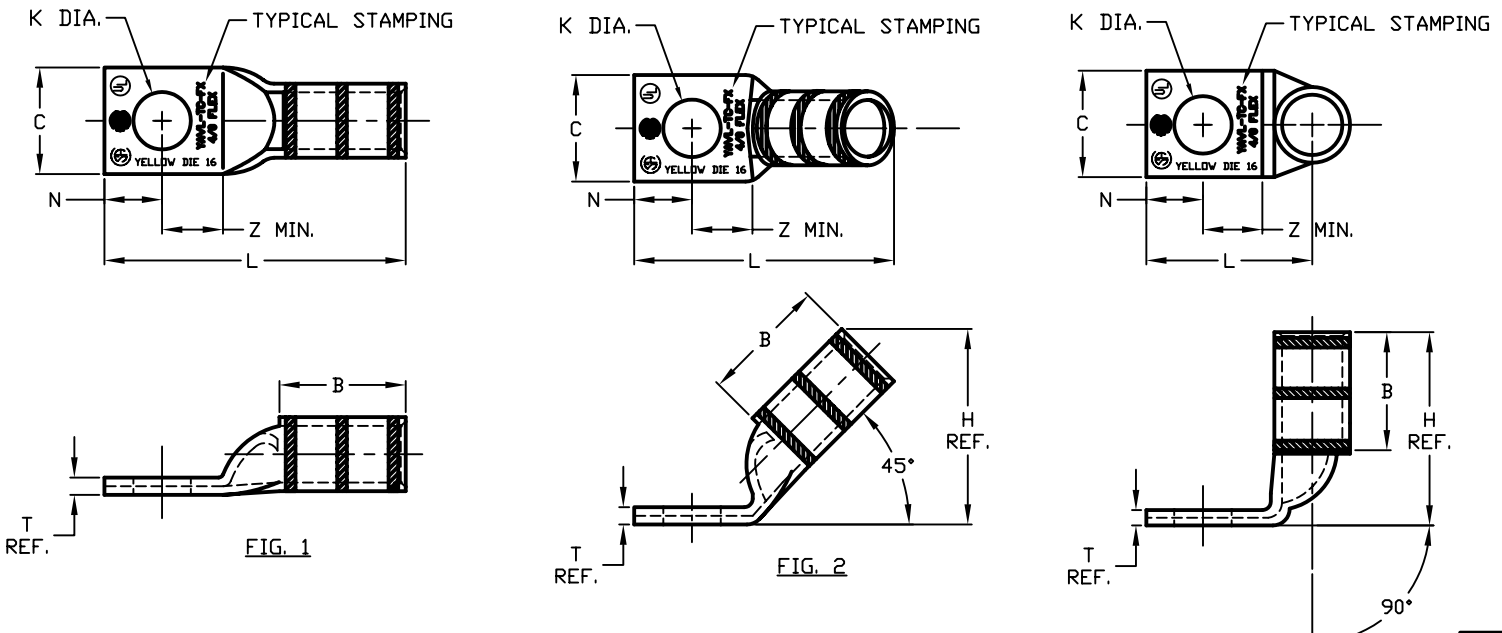


CATALOG NO.	FIG. NO.	CONDUCTOR		BOLT SIZE	DIMENSIONS								BURNDY® INSTALLATION TOOLING (# CRIMPS)																																
		FLEX	CODE (AWG)		B ±.08	C ±.04	H REF.	K ±.02	L ±.12	N ±.03	D.D. ±.01	T REF.	Z MIN.	DIE INDEX	COLOR CODE	MECHANICAL MD7-34R	HYDRAULIC				DIELESS (# CRIMPS)	WIRE STRIP LENGTH																							
																	BCT500 Y500CT	Y750, Y35 Y39, BAT750 BAT35, PAT750	Y46	Y45																									
YAV29L-TC14-FX	1	4/0 FLEX CLASS I, K, M	250	3/8 [M10]	1.03 [26]	1.18 [30]	-	-	2.23 [57]	.31 [8]	.80 [21]	.16 [4]	.32 [8]	16	YELLOW	W29VT (2)	W29VT (2)	U29RT (1)	U29RT (1)	U29RT (1)	HYDRAULIC: Y644M (1) BAT644M PAT644M	1-1/16"																							
YAV29L-TC14-FX-45	2				1.73 [44]	.27 [7]	2.15 [55]																																						
YAV29L-TC14-FX-90	3				1.87 [47]		1.17 [30]																																						
YAV29L-TC38-FX	1			4/0 FLEX CLASS I, K, M	250	3/8 [M10]	1.03 [26]	1.18 [30]	-	-	2.42 [61]	.41 [10]	.80 [21]	.16 [4]	.42 [11]	16	YELLOW	W29VT (2)	W29VT (2)	U29RT (1)			U29RT (1)	U29RT (1)	HYDRAULIC: Y644M (1) BAT644M PAT644M	1-1/16"																			
YAV29L-TC38-FX-45	2						1.73 [44]	.40 [10]	2.34 [59]																																				
YAV29L-TC38-FX-90	3						1.87 [47]		1.35 [34]																																				
YAV29L-TC12-FX	1					4/0 FLEX CLASS I, K, M	250	1/2 [M12]	1.03 [26]	1.18 [30]	-	-	2.67 [68]	.53 [13]	.80 [21]	.16 [4]	.55 [14]	16	YELLOW	W29VT (2)			W29VT (2)	U29RT (1)			U29RT (1)	U29RT (1)	HYDRAULIC: Y644M (1) BAT644M PAT644M	1-1/16"															
YAV29L-TC12-FX-45	2								1.73 [44]	.53 [13]	2.59 [66]																																		
YAV29L-TC12-FX-90	3								1.87 [47]		1.60 [41]																																		
YAV29L-TC58-FX	1							4/0 FLEX CLASS I, K, M	250	5/8 [M16]	1.03 [26]	1.18 [30]	-	-	2.92 [74]	.66 [17]	.80 [21]	.16 [4]	.67 [17]	16			YELLOW	W29VT (2)			W29VT (2)	U29RT (1)			U29RT (1)	U29RT (1)	HYDRAULIC: Y644M (1) BAT644M PAT644M	1-1/16"											
YAV29L-TC58-FX-45	2										1.73 [44]	.69 [17]	2.84 [72]																																
YAV29L-TC58-FX-90	3										1.87 [48]		1.85 [47]																																
YAV29L-TC516-FX	1									4/0 FLEX CLASS I, K, M	250	5/16 [M8]	1.03 [26]	1.18 [30]	-	-	2.30 [58]	.34 [9]	.80 [21]	.16 [4]			.36 [9]	16			YELLOW	W29VT (2)			W29VT (2)	U29RT (1)			U29RT (1)	U29RT (1)	HYDRAULIC: Y644M (1) BAT644M PAT644M	1-1/16"							
YAV29L-TC516-FX-45	2												1.73 [44]	.33 [8]	2.21 [56]																														
YAV29L-TC516-FX-90	3												1.87 [48]		1.23 [31]																														
YAV29L-TC34-FX	1											4/0 FLEX CLASS I, K, M	250	3/4 [M20]	1.03 [26]	1.18 [30]	-	-	3.11 [79]	.75 [19]			.80 [21]	.16 [4]			.77 [20]	16			YELLOW	W29VT (2)			W29VT (2)	U29RT (1)			U29RT (1)	U29RT (1)	HYDRAULIC: Y644M (1) BAT644M PAT644M	1-1/16"			
YAV29L-TC34-FX-45	2														1.73 [44]	.81 [21]	3.03 [77]																												
YAV29L-TC34-FX-90	3														1.87 [48]		2.04 [52]																												

REV.	DATE	DESCRIPTION	ECO	BY	C'K'D.
C	5/14/03	REMOVE NOTES 5, 6, 8 & 9. ADD TWO CRIMP SPACES ON LUGS AND UPDATE TABLE	8536	DB	PL



- NOTES:**
- MATERIAL: COPPER TUBING.
 - FINISH: TIN PLATED.
 - CATALOG # PT6515 ADAPTOR IS REQUIRED TO USE 'U' DIES IN Y45 SERIES TOOLS.
 - CATALOG # PUADP-1 ADAPTOR IS REQUIRED TO USE 'U' DIES IN Y46 SERIES TOOLS.
 - DIMENSIONS IN BRACKETS [] ARE IN MILLIMETERS ROUNDED OFF TO THE NEAREST MILLIMETER, UNLESS OTHERWISE NOTED, AND ARE FOR REFERENCE ONLY.
 - ALL OF THE CATALOG NUMBERS FOR THESE HYLUGS™ CAN BE ORDERED WITH NICKEL PLATING BY ADDING THE SUFFIX 'NK' AFTER 'FX' IN THE CATALOG NUMBER.

TO ORDER BURNDY® PRODUCTS CALL		HYLUG™	
UNITED STATES: 1-800-346-4175 (LONDONDERRY, NH)		ITEM NO: N/A	
CANADA: 1-800-361-6975 (QUEBEC) 1-800-387-6487 (ALL OTHER PROVINCES)		CAT NO: YAV29L-TC-FX (TABLE)	
FOR PRODUCT INFO: http://www.burndy.com		SCALE: N/A	
		DRAWN BY: D BOISVERT 2/20/02	
		CHECKER: B MICHAUD 2/22/02	
		DSN APPVL: J MICHAUD 5/18/01	
		MFG APPVL: --	
		QC APPVL: J BRODEUR 5/29/01	
		MKT APPVL: R ROBICHAU 5/08/01	
		DRAWING NO	
		REV	
		SE214481-01	
		C	
		SHEET 1 OF 1	