

4

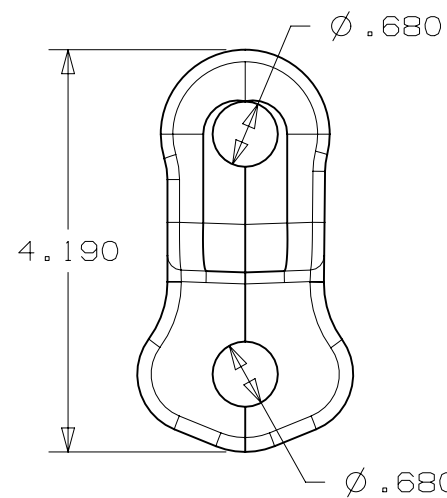
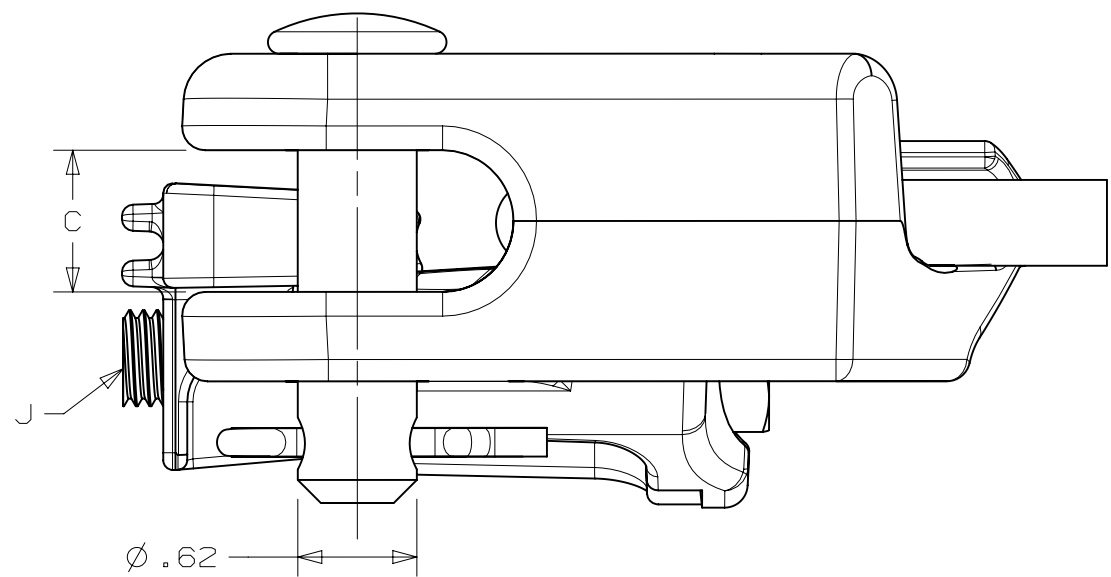
3

2

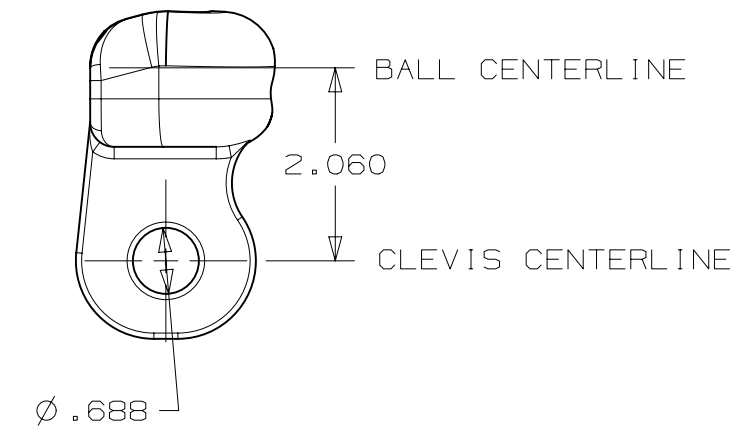
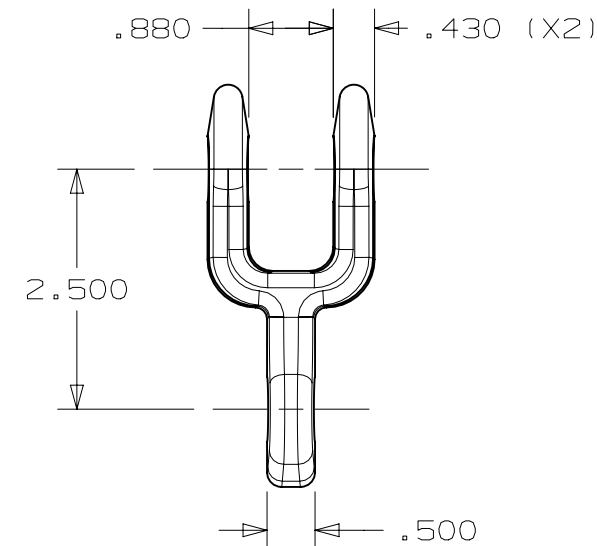
1

NOTES:

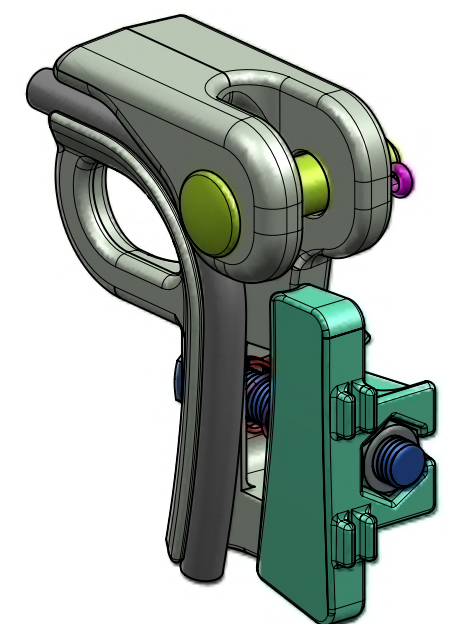
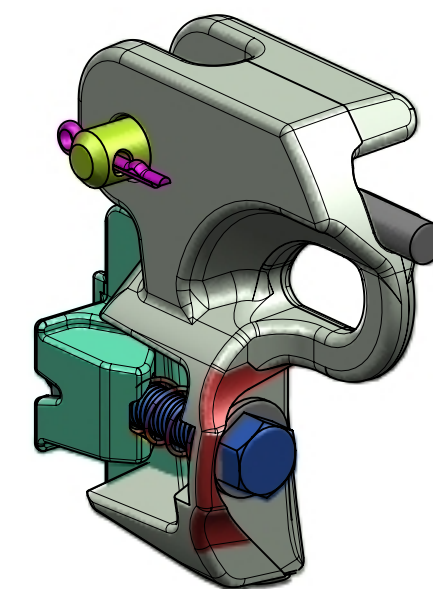
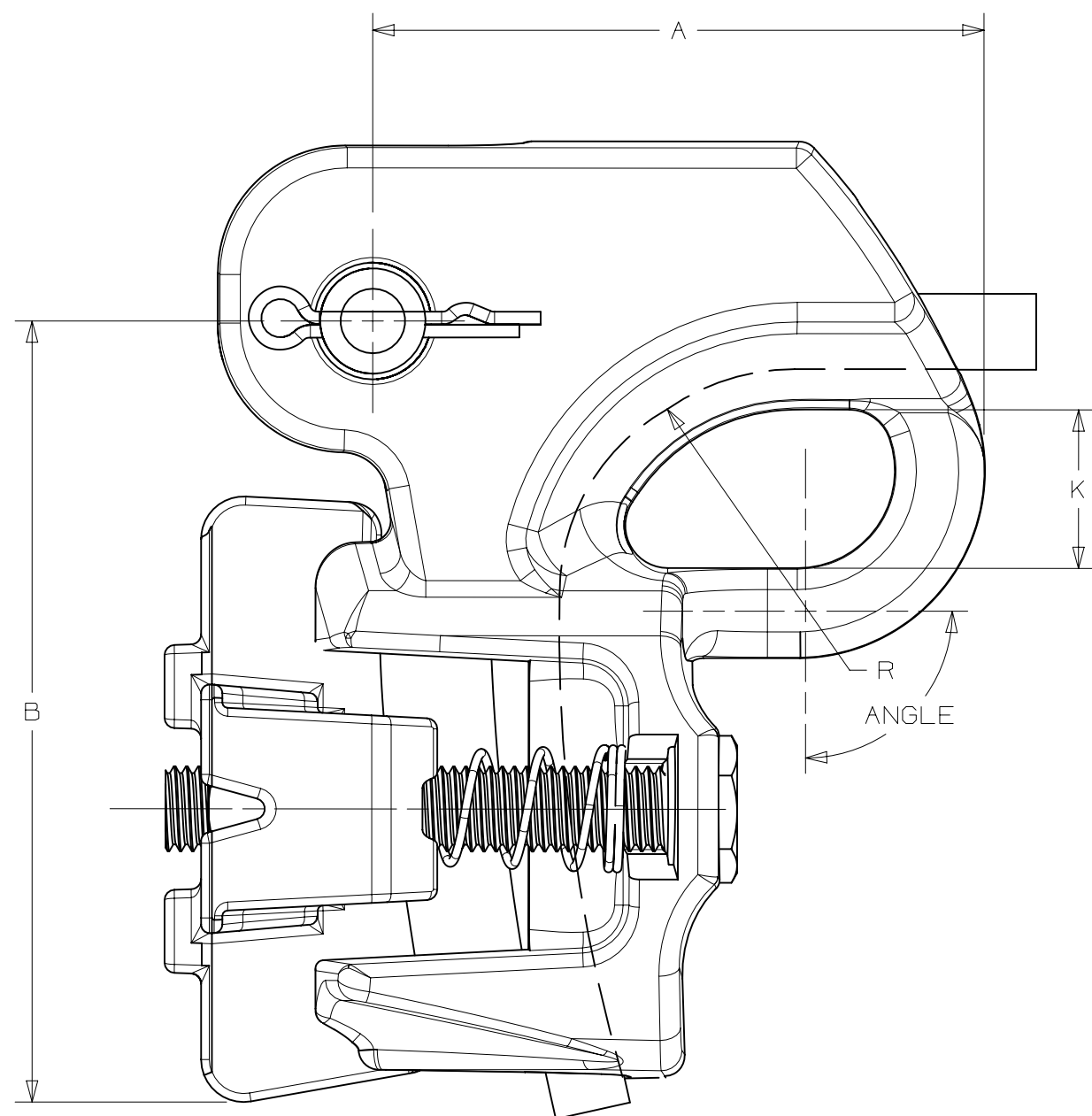
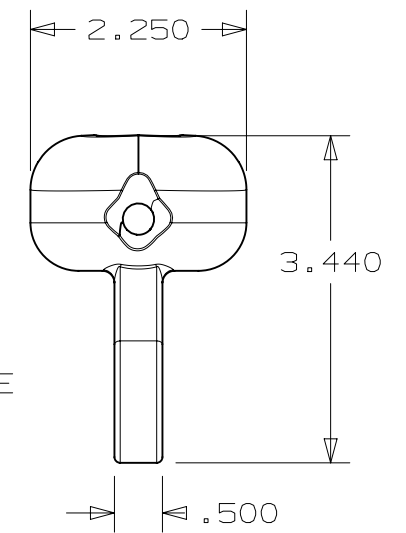
- 1. MATERIAL: BODY & KEEPER - ALUMINUM ALLOY.  
BOLTS & NUTS - GALV. STEEL.  
CLEVIS PIN - GALV. STEEL.  
COTTER PIN - STAINLESS STEEL.  
CLEVIS OR SOCKET FITTING - DUCTILE IRON, HOT DIP GALV.
- 2. DIMENSIONS IN INCHES FOR REFERENCE ONLY.
- 3. CLAMPS WITH END FITTING MAY BE ORDERED BY CHANGING -N SUFFIX TO -S FOR SOCKET OR -C FOR CLEVIS IN CATALOG NUMBER.  
EX. SLQ48S FOR SLQ48 WITH SOCKET.  
NOTE THAT SOCKET IS FOR USE WITH CLASS 52-3 OR 52-5 INSULATOR PER ANSI C-29.2



CLEVIS FITTING (TYPE CA)



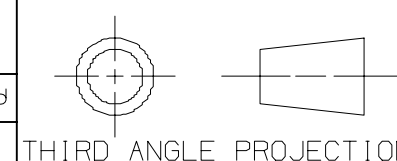
SOCKET FITTING (TYPE SA)



| CATALOG NUMBER | CABLE RANGE |      |          |           |            |              | DIMENSIONS IN INCHES |       |      |        |      |       | ANGLE | NO. BOLTS | ULT. STR. (LBS.) |        |               |
|----------------|-------------|------|----------|-----------|------------|--------------|----------------------|-------|------|--------|------|-------|-------|-----------|------------------|--------|---------------|
|                | INCHES      |      | ACSR     |           | ALUMINUM   |              | A                    | B     | C    | J      | K    | R     |       |           | BODY             | SAGEYE | TORQUE FT-LBS |
|                | MIN.        | MAX. | MIN.     | MAX.      | MIN.       | MAX.         |                      |       |      |        |      |       |       |           |                  |        |               |
| SLQ48N         | .19         | .48  | #6 (6/1) | 2/0 (6/1) | #4 (7 STR) | 2/0 (19 STR) | 3.651                | 4.618 | .748 | 1/2-13 | .945 | 1.370 | 90°   | 1         | 8,000            | 6,000  | 45            |

| EC #  | REV | DESCRIPTION                   | DATE     | CHG BY | APPR'd |
|-------|-----|-------------------------------|----------|--------|--------|
| 67599 | 04  | ADDED NOTE 3 & TORQUE RATING. | 12/08/16 | SD     | SD     |

REVISION HISTORY



THIRD ANGLE PROJECTION

HPS<sup>®</sup>

**HUBBELL<sup>®</sup> POWER SYSTEMS**

TITLE: **SIDE LOADING QUADRANT DEADEND**

CONFIDENTIAL: THIS DRAWING AND ITS CONTENTS ARE CONFIDENTIAL AND THE EXCLUSIVE PROPERTY OF HUBBELL POWER SYSTEMS. NO PUBLICATION, DISTRIBUTION OR COPIES MAY BE MADE WITHOUT THE WRITTEN CONSENT OF HUBBELL POWER SYSTEMS. HUBBELL POWER SYSTEMS UNPUBLISHED ALL RIGHTS RESERVED UNDER THE COPYRIGHT LAWS.

|              |          |                       |               |
|--------------|----------|-----------------------|---------------|
| SIZE         | DWG NO.  | CAT / PART / ASSY NO. | REV           |
| C            | CC-19579 | SLQ48N                | 04            |
| SCALE:       | NONE     | DRN BY: BAF           | DATE: 8/03/11 |
| SHEET 1 OF 1 |          |                       |               |

4

3

2

1