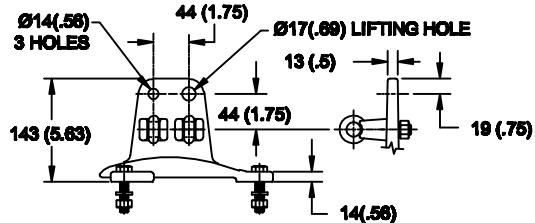
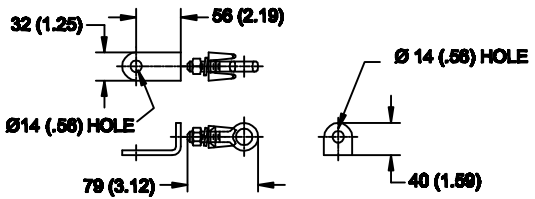


**LINE TERMINAL DETAIL**



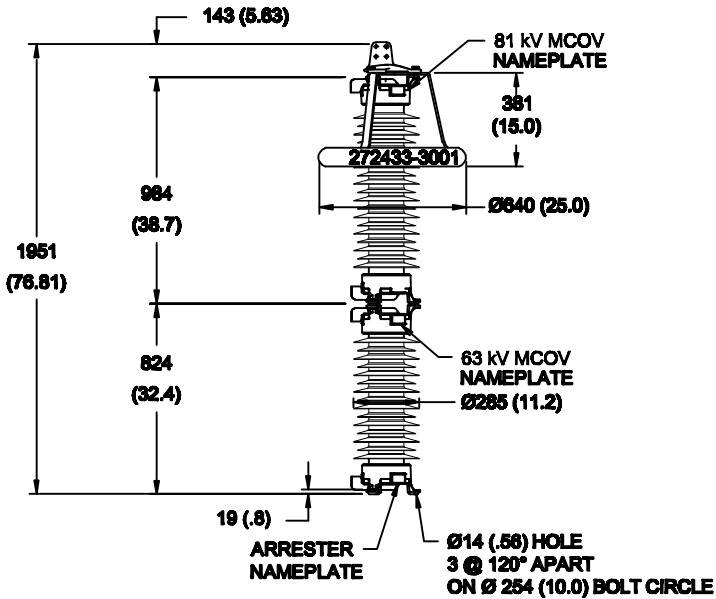
HDG 4-HOLE TERMINAL PAD, PART No. 901704001  
 TWO HDG TERMINALS, PART No. 2714143001  
 SUITABLE FOR COPPER OR ALUMINUM CONDUCTOR SIZE  
 Ø 7 (.25) - Ø 21 (.81)  
 25 - 240 sq mm  
 AWG#4 - 500 MCM

**GROUND TERMINAL DETAIL**



HDG TERMINAL BRACKET, PART No. 896064001  
 ONE HDG TERMINAL, PART No. 2714143001  
 SUITABLE FOR COPPER OR ALUMINUM CONDUCTOR SIZE  
 Ø 7 (.25) - Ø 21 (.81)  
 25 - 240 sq mm  
 AWG#4 - 500 MCM

Ø = DIAMETER  
 HDG = HOT DIP GALVANIZED



- NOTES:**  
 1. DIMENSIONS IN millimeters(INCHES) SUBJECT TO ±3% TOLERANCE  
 2. CLEARANCE AND INSULATION W/S VOLTAGE APPLY AT SEA LEVEL  
 3. ARRESTER SUITABLE FOR OPERATION AT ALTITUDES UP TO 3650m (12000ft)

CHARACTERISTICS	
RATED VOLTAGE	180 kVrms
MCOV	144 kVrms
MASS	131kg (287lb)
CREEPAGE DISTANCE	5010 (197.2)
LIGHTNING IMP W/S	836 kV
SWITCHING IMP W/S	724 kV
POWER FREQ W/S	435 kVrms
TOV 1s	210 kVrms
TOV 10s	201 kVrms
COG ABOVE BASE	985 (38.8)
HOUSING	GREY SILICONE

CANTILEVER FORCE	
MAX CONTINUOUS (MDCL)	2050 N (461lbf)
ULTIMATE	4100 N (922lbf)

RECOMMENDED CLEARANCE (TO METAL PARTS)	
PHASE TO GROUND	816 (32.2)
PHASE TO PHASE	939 (37.0)

DISCHARGE VOLTAGE (kV) FOR INDICATED IMPULSE TYPES AND CURRENT MAGNITUDES							
FRONT OF WAVE	SWITCHING SURGE	8/20 LIGHTNING IMPULSE					
		1.5 kA	3 kA	5 kA	10 kA	20 kA	40 kA
10 kA	1 kA	370	385	398	418	447	491
454	355						

IEEE C62.11  
 STATION CLASS  
 SURGE ARRESTER  
 Program Revision  
 2017.05.23.03.05.27  
 REV DATE  
 04/14/11

CONFIDENTIAL: THIS DRAWING AND ITS CONTENTS ARE CONFIDENTIAL AND THE EXCLUSIVE PROPERTY OF HUBBELL POWER SYSTEMS. NO PUBLICATION, DISTRIBUTION OR COPIES MAY BE MADE WITHOUT THE WRITTEN CONSENT OF HUBBELL POWER SYSTEMS. HUBBELL POWER SYSTEMS UNPUBLISHED ALL RIGHTS RESERVED UNDER THE COPYRIGHT LAWS.

**TITLE**  
**SVN ARRESTER**  
**144 KV MCOV**

SIZE	DWG NO.	CAT / PART / ASSY NO.	REV
S	18161393	SVN180GA144AA	0
DO NOT SCALE THIS DRAWING	DRN BY	DATE	SHEET
	NON	04/14/11	1 OF 1