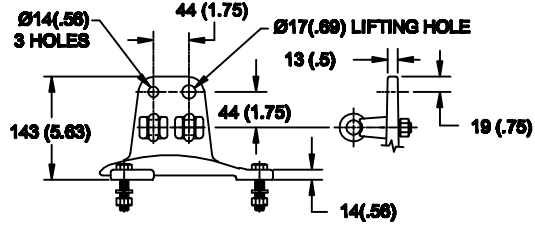
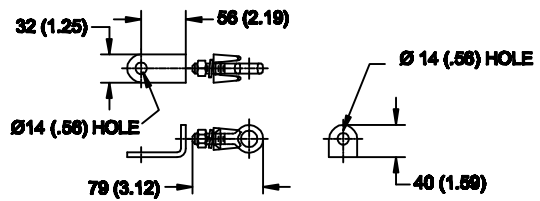


LINE TERMINAL DETAIL



HDG 4-HOLE TERMINAL PAD, PART No. 901704001
 TWO HDG TERMINALS, PART No. 2714143001
 SUITABLE FOR COPPER OR ALUMINUM CONDUCTOR SIZE
 Ø 7 (.25) - Ø 21 (.81)
 25 - 240 sq mm
 AWG#4 - 500 MCM

GROUND TERMINAL DETAIL



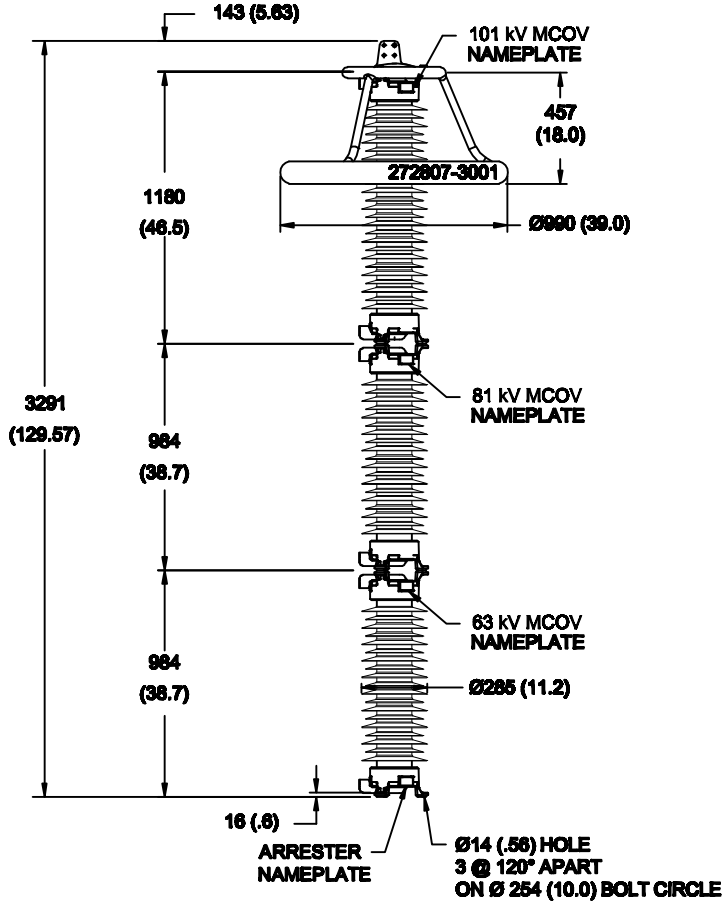
HDG TERMINAL BRACKET, PART No. 896064001
 ONE HDG TERMINAL, PART No. 2714143001
 SUITABLE FOR COPPER OR ALUMINUM CONDUCTOR SIZE
 Ø 7 (.25) - Ø 21 (.81)
 25 - 240 sq mm
 AWG#4 - 500 MCM

Ø = DIAMETER
 HDG = HOT DIP GALVANIZED

CHARACTERISTICS	
RATED VOLTAGE	312 kVrms
MCOV	245 kVrms
MASS	208kg (457lb)
CREEPAGE DISTANCE	9380 (369.3)
LIGHTNING IMP W/S	1507 kV
SWITCHING IMP W/S	1344 kV
POWER FREQ W/S	806 kVrms
TOV 1s	357 kVrms
TOV 10s	343 kVrms
COG ABOVE BASE	1705 (67.1)
HOUSING	GREY SILICONE

CANTILEVER FORCE	
MAX CONTINUOUS (MDCL)	1215 N (273lbf)
ULTIMATE	2431 N (546lbf)

RECOMMENDED CLEARANCE (TO METAL PARTS)	
PHASE TO GROUND	1416 (55.7)
PHASE TO PHASE	1614 (63.5)



NOTES:
 1. DIMENSIONS IN millimeters(inches) SUBJECT TO ±3% TOLERANCE
 2. CLEARANCE AND INSULATION W/S VOLTAGE APPLY AT SEA LEVEL
 3. ARRESTER SUITABLE FOR OPERATION AT ALTITUDES UP TO 3650m (12000ft)

DISCHARGE VOLTAGE (kV) FOR INDICATED IMPULSE TYPES AND CURRENT MAGNITUDES							
FRONT OF WAVE	SWITCHING SURGE	8/20 LIGHTNING IMPULSE					
		1.5 kA	3 kA	5 kA	10 kA	20 kA	40 kA
10 kA	2 kA	629	654	676	710	758	834
770	623	629	654	676	710	758	834

IEEE C62.11
 STATION CLASS
 SURGE ARRESTER
 Program Revision
 2017.05.23.03.05.27
 REV DATE
04/14/11

CONFIDENTIAL: THIS DRAWING AND ITS CONTENTS ARE CONFIDENTIAL AND THE EXCLUSIVE PROPERTY OF HUBBELL POWER SYSTEMS. NO PUBLICATION, DISTRIBUTION OR COPIES MAY BE MADE WITHOUT THE WRITTEN CONSENT OF HUBBELL POWER SYSTEMS. HUBBELL POWER SYSTEMS UNPUBLISHED ALL RIGHTS RESERVED UNDER THE COPYRIGHT LAWS.

TITLE
SVN ARRESTER
245 KV MCOV

SIZE	DWG NO.	CAT / PART / ASSY NO.	REV
S	18232770	SVN312GA245AA	0
DO NOT SCALE THIS DRAWING	DRN BY	DATE	SHEET
	NON	04/14/11	1 OF 1