

6

5

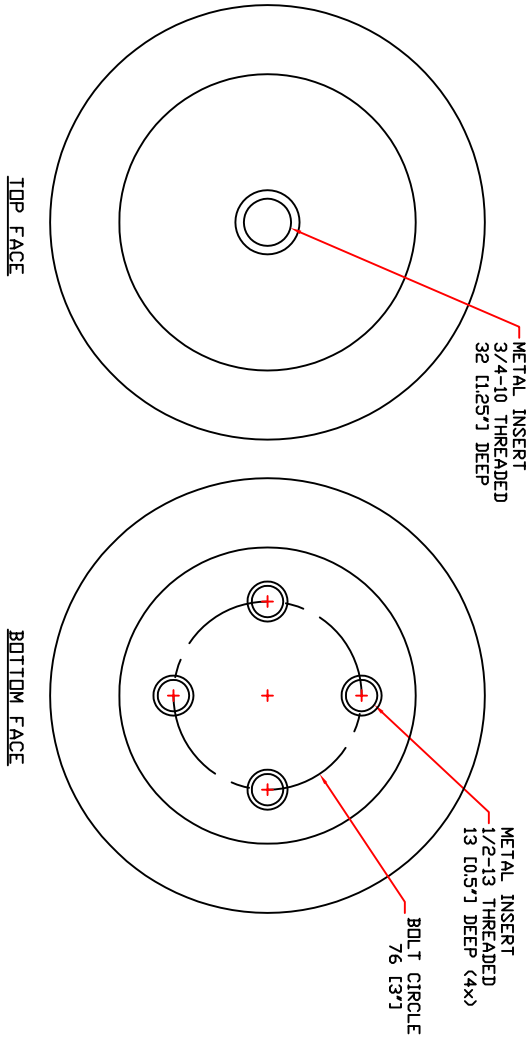
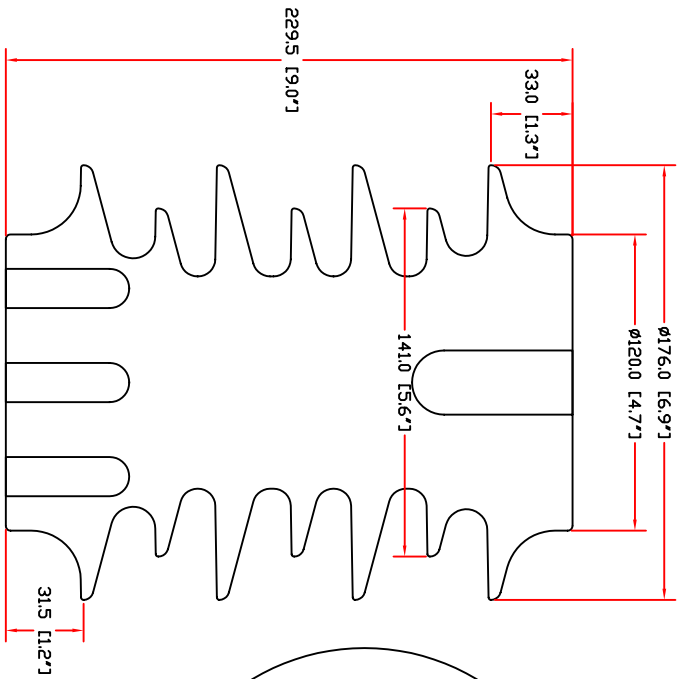
4

3

2

1

REVISIONS			
ZONE	REV	DESCRIPTION	DATE
A	1	MECHANICAL PROPERTIES TABLE	4/04/01
B	1	ROUND EDGE BUS BAR CHANGED FROM INSULATED BUS BAR	2/05/01
C	1	CHANGE BASE INSERTS TO 50mm LENGTH MODEL	9/05/01
D	1	ADD CUSTOMER REFERENCE NO AND NEW ECI PRODUCT NO.	22/10/02



- NOTES:
- 1- TESTED IN ACCORDANCE WITH ANSI C29.1.
  - 2- MECHANICAL PROPERTIES ARE FOR BOLT PATTERN AS SHOWN.
  - 3- BIL VALUE FOR ROUND EDGE BUS BAR ONLY.

This drawing is the proprietary property of Electro Composites Inc., not part of the public domain, and is issued with the express understanding and agreement that it is not to be reproduced or copied in whole or in part or issued for furnishing information to others, or used directly or indirectly, in any way detrimental to the interest of Electro Composites Inc. and is to be returned upon request by Electro Composites Inc. All Rights Reserved.

Model	T002A
<b>Physical Characteristics</b>	
Height - in[mm]	9.0 [229]
Major Diameter - in[mm]	6.9 [176]
Head Diameter - in[mm]	5.0 [126]
Weight - lbs[kg]	10.8 [4.9]
Color	grey
<b>Electrical Properties</b>	
Nominal Voltage - KV	25
BIL - KV	150
Leakage Distance - in[mm]	23.0 [583]
No. of Sheds	7
<b>Mechanical Properties</b>	
Compressive - lbs[kN]	50,000 [222.4]
Cantilever @2.5" - lbs[kN]	3,000 [13.3]
Torsional - lbs-in[N-m]	17,000 [1920]
Tensile - lbs[kN]	5,500 [24.5]

ITEM NO.	QTY	DRAWING NO.	PART NO.	DESCRIPTION	NOTE OR MAT'L.
3	1	S-1001-990	INSERT 3/4-10 x 60mm		STEEL
2	4	S-1001-955	INSERT 1/2-13 x 50mm		STEEL
1	1	S-2017-987	BODY, CYCLOALIPHATIC RESIN		EPXY

GENERAL TOLERANCES (UNLESS OTHERWISE SPECIFIED)

CUSTOMER: GE ST-AUGUSTIN 121B3223-1

TITLE: OUTDOOR APPARATUS INSULATOR 25kV NOMINAL - 150kV BIL

DATE: 00/11/27

APP: S-2017-987

SCALE: NONE

GENERATED BY: STRM VERSION 5.9

PAGE: 1 OF 1

6

5

4

3

2

1