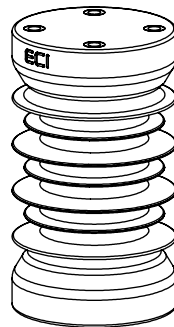
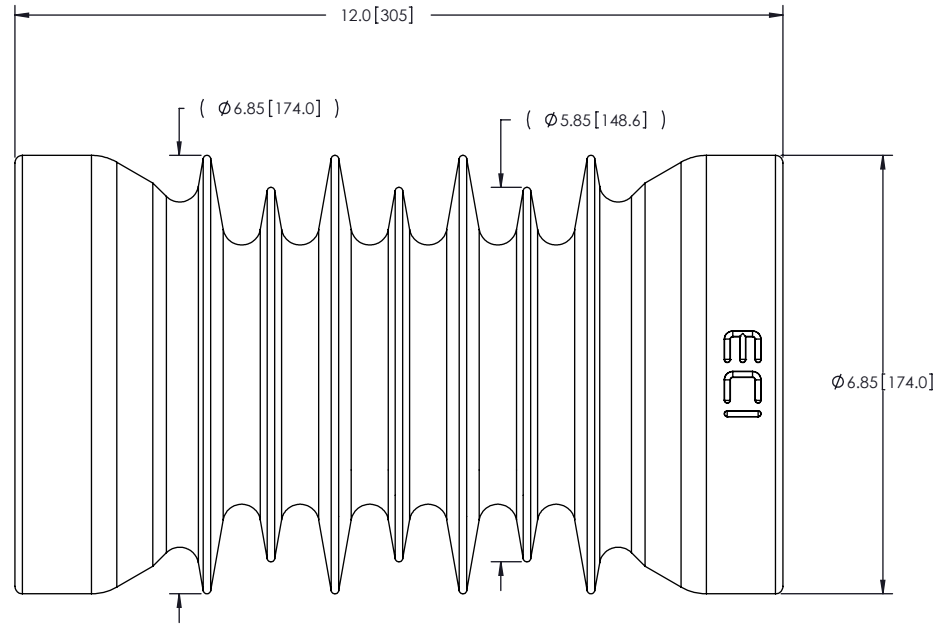
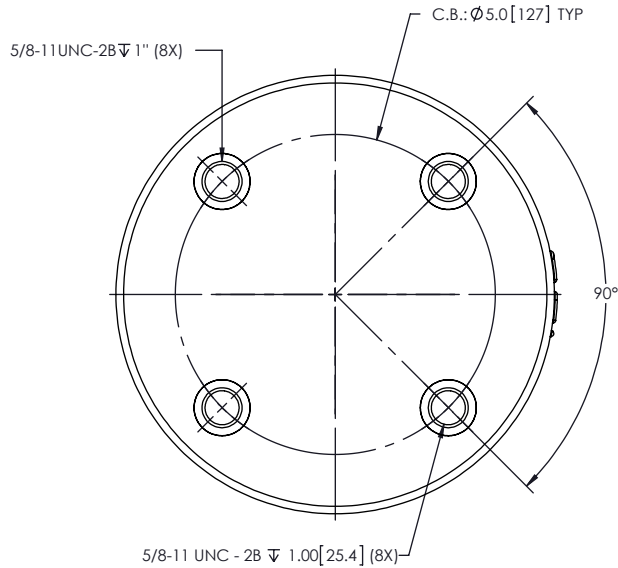


- NOTES:
- 1 CREEPAGE DISTANCE: 24.0" / 610mm
 - 2 ARC DISTANCE: 12.1" / 307mm
 - 3 NOMINAL VOLTAGE: 25kV
 - 4 B.I.L. : 110kV ⓐ
 - 5 ANSI C29.9-1983
 - 6 MAX. TORQUE APPLIED ON FLANGE BOLTS: 30 lbf·ft / 40.7 N/m
 - 7 WEIGHT: 21 lb / 9.5kg
 - 8 COLOR: GRAY

REVISIONS					
ZONE	REV.	DESCRIPTION	DRAWN BY	DATE	APPR.
F5	A	THE B.I.L. CHANGE FROM 95kV TO 110kV	J. CLICHE	2013-05-28	Y.V.
A6	B	MECHANICAL PROPERTIES: THE TORSION CHANGE TO 14,000 lbf AND THE TENSILE CHANGE FOR 20,000 lbf	J. CLICHE	2013-06-05	Y.V.



MECHANICAL PROPERTIES	
COMPRESSION	20,000 lbf (89.0 kN)
ⓑ TORSION	14,000 lbf (62.3 kN)
ⓑ TENSILE	20,000 lbf (89.0 kN)
CANTILEVER @ 2.5"	4,000 lbf (17.8 kN)

ITEM NO.	QTY	DRAWING NO.	PART NO.	DESCRIPTION	NOTE / MAT'L
8	1	S-3819-2553	-001	INSERT 5/8-11UN 1" LONG	GALVANIZED STEEL
1	1	S-1001-2902	-001	CASTING, CYCLOALIPHATIC RESIN	EC-APG-01
LISTE DE PIÈCES					

GENERAL TOLERANCES
(UNLESS OTHERWISE SPECIFIED)

X.	±0.06
.X	±0.03
.XX	±0.01
.XXX	±0.005
ANGLES	±0.25°
RADIUS	±0.031

REMOVE BURRS AND
BREAK SHARP EDGES

DIMENSIONS ARE IN
INCHES
(UNLESS OTHERWISE SPECIFIED)

Electro Composites™
solid HV bushings solution

TITLE:
INSULATOR 25KV
MODEL: T225A

DRAWN BY: J. CLICHE	DATE: 2013/05/27	FORMAT: A	CAGE CODE	DRAWING NO. S-1001-2902	REVISION: B
CHECK BY:		SCALE: 1:3	GENERATED BY: SolidWorks 2012	SHEET: 1 of 1	
PROJECT ENG.:					
PROJECT MANAGER:					

This drawing is the proprietary property of Electro Composites (2008) ULC, not part of the public domain, and is issued with the express understanding and agreement that it is not to be reproduced or copied in whole or in part or issued for furnishing information to others, or used directly or indirectly, in any way detrimental to the interest of Electro Composites (2008) ULC and is to be returned upon request by Electro Composites (2008) ULC. All Rights Reserved.