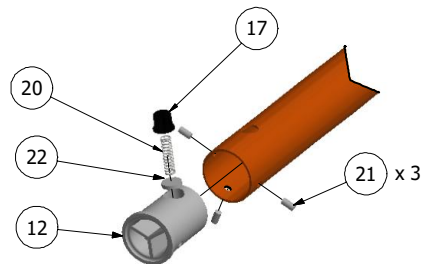
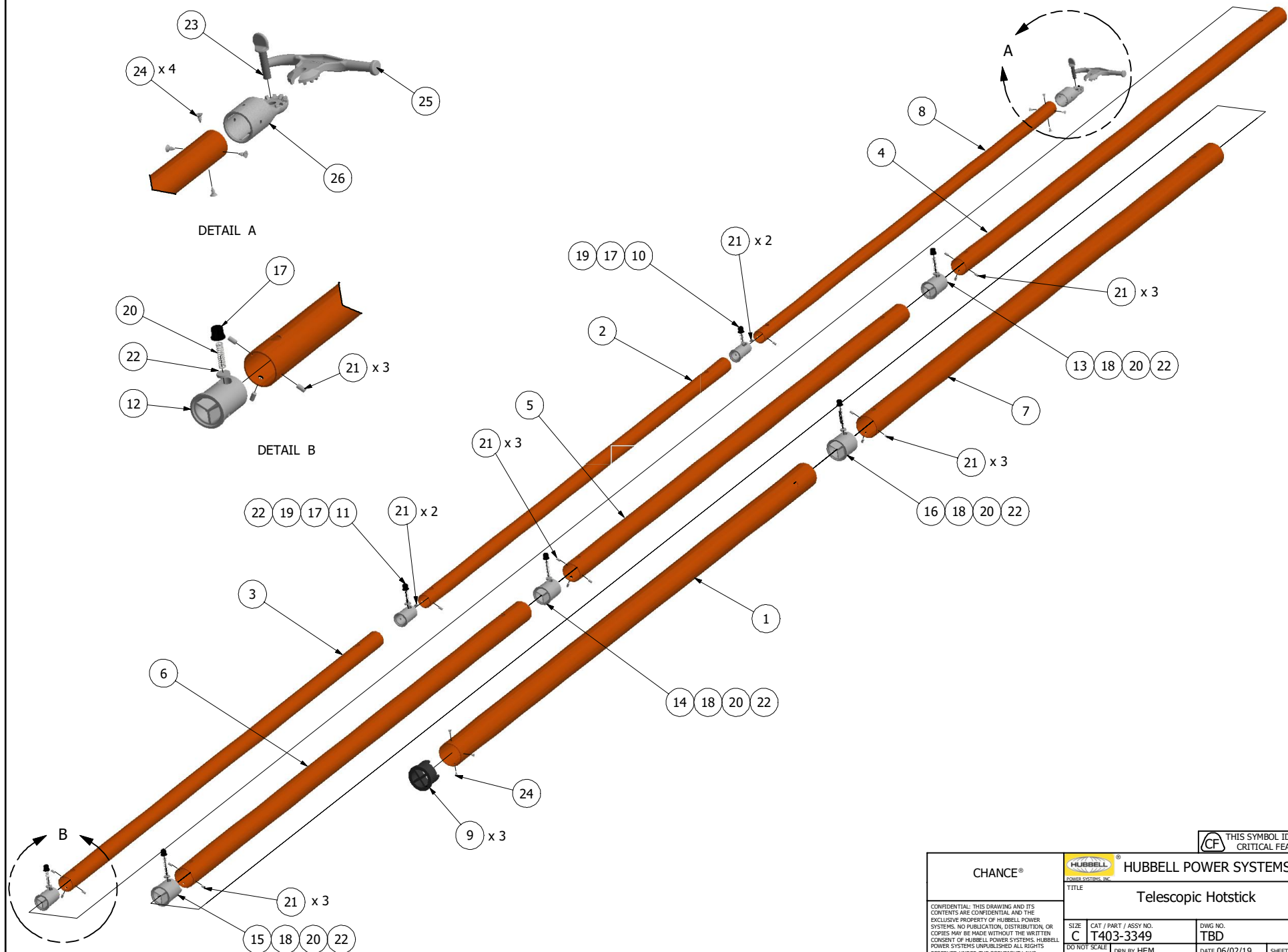


DETAIL A



DETAIL B



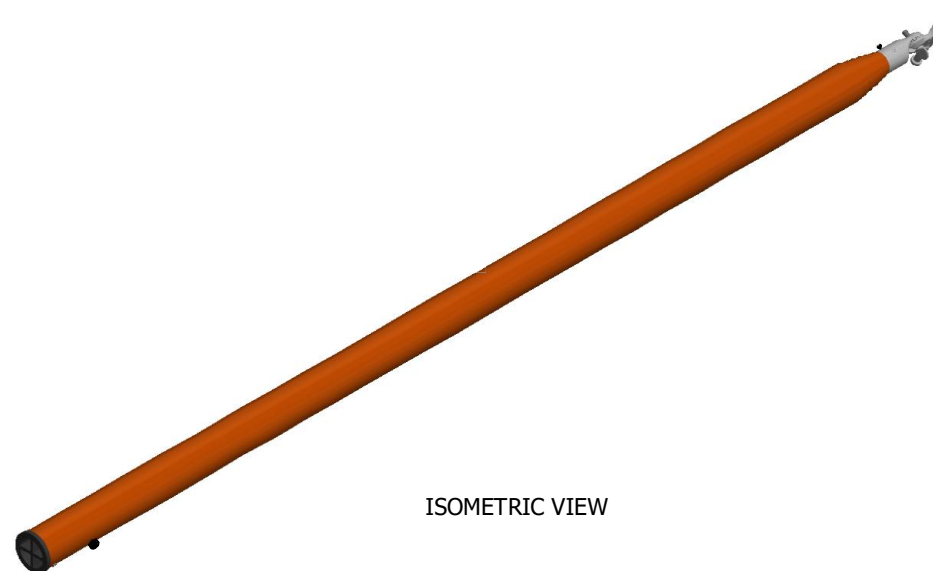
THIS SYMBOL IDENTIFIES
CRITICAL FEATURES

CHANCE®		HUBBELL POWER SYSTEMS, INC.	
<small>CONFIDENTIAL: THIS DRAWING AND ITS CONTENTS ARE CONFIDENTIAL AND THE EXCLUSIVE PROPERTY OF HUBBELL POWER SYSTEMS. NO PUBLICATION, DISTRIBUTION, OR COPIES MAY BE MADE WITHOUT THE WRITTEN CONSENT OF HUBBELL POWER SYSTEMS. HUBBELL POWER SYSTEMS UNPUBLISHED ALL RIGHTS RESERVED UNDER THE COPYRIGHT LAWS.</small>		<small>HUBBELL</small> POWER SYSTEMS, INC. TITLE Telescopic Hotstick	
		<small>SIZE</small> C	<small>REV</small> -
<small>DO NOT SCALE THIS DRAWING</small>	<small>CAT / PART / ASSY NO.</small> T403-3349 <small>DRN BY HEM</small>	<small>DWG NO.</small> TBD <small>DATE 06/02/19</small>	<small>SHEET 1 OF 2</small>

NOTES

1. POLE TESTED AS PER ASTM F711 AND IEC 60855.
2. TOOL TESTED AS PER ASTM F1826 AND IEC 62193.
3. USABLE LENGTHS 22 - 28 - 34 - 40 ft.
4. RETRACTED LENGTH: 74 1/2 in. EXTENDED LENGTH: 40 ft.
5. BASE DIAMETER 2 1/2" TIP DIAMETER 1 1/16".
6. WEIGHT - 12lb.
7. STORAGE BAG: P6216.

S.NO.	PART NUMBER	DESCRIPTION	QTY.
1	P4033360P	BASE TUBE 2.47"OD x 71.31"	1
2	P4033353P	TUBE 1.27"OD x 57.81"	1
3	P4033354P	TUBE 1.47"OD x 60.06"	1
4	P4033355P	TUBE 1.67"OD x 62.31"	1
5	P4033356P	TUBE 1.87"OD x 64.56"	1
6	P4033357P	TUBE 2.07"OD x 66.81"	1
7	P4033358P	TUBE 2.27"OD x 69.06"	1
8	P4033359P	POLE 1.07"OD x 55.56"	1
9	P4031008P	BOTTOM CAP, DIA 2.36"	1
10	P4031007P	PLUG, DIA 0.90"	1
11	P4031006P	PLUG, DIA 1.16"	1
12	P4031005P	PLUG, DIA 1.36"	1
13	P4031004P	PLUG, DIA 1.56"	1
14	P4031003P	PLUG, DIA 1.76"	1
15	P4031002P	PLUG, DIA 1.96"	1
16	P4031001P	PLUG, DIA 2.16"	1
17	P4033002P	BUTTON	3
18	P4033001P	BUTTON	4
19	P4032351P	SPRING, 1.25 LONG	2
20	P4032352P	SPRING 2.00 LONG	5
21	P0010419P	PIN, .187 DIA X .375 LG	19
22	P4031977P	SPRING RETAINER	7
23	P4030467P	THUMBSCREW	1
24	P0010309P	SELF TAPPING SCR, #8-32 STN STL	7
25	M44559	UNIVERSAL DISCONNECT HD	1
26	P4032514P	UNIVERSAL POLE HEAD	1



ISOMETRIC VIEW

THIS SYMBOL IDENTIFIES
CRITICAL FEATURES

CHANCE®		HUBBELL® POWER SYSTEMS, INC.		HUBBELL POWER SYSTEMS, INC.	
CONFIDENTIAL: THIS DRAWING AND ITS CONTENTS ARE CONFIDENTIAL AND THE EXCLUSIVE PROPERTY OF HUBBELL POWER SYSTEMS. NO PUBLICATION, DISTRIBUTION, OR COPIES MAY BE MADE WITHOUT THE WRITTEN CONSENT OF HUBBELL POWER SYSTEMS. HUBBELL POWER SYSTEMS UNPUBLISHED ALL RIGHTS RESERVED UNDER THE COPYRIGHT LAWS.		TITLE Telescopic Hotstick		REV -	
SIZE C	CAT / PART / ASSY NO. T403-3349	DWG NO. TBD	DATE 06/02/19	DRN BY HEM	SHEET 2 OF 2