

CATALOG NUMBER	FIGURE NUMBER	CONDUCTOR SIZE		APPROX. SHIP WT. EACH (LBS/(KG)	ULTIMATE STR. (LBS/(KG)
		MIN	MAX		
TSC-57	1	.25	.57	.42/(.19)	2800/(1270)
TSC-86	1	.55	.86	.45/(.20)	2800/(1270)
TSC-106	1	.50	1.069	.62/(.28)	2800/(1270)
TSC-150	1	1.00	1.50	.64/(.29)	2800/(1270)
TSCHT-150	1	1.00	1.50	.64/(.29)	2800/(1270)
TSC-200	2	1.50	2.00	.75/(.34)	2800/(1270)
TSCHT-200	2	1.50	2.00	.75/(.34)	2800/(1270)
TSC-242	2	2.00	2.42	1.15/(.52)	2800/(1270)

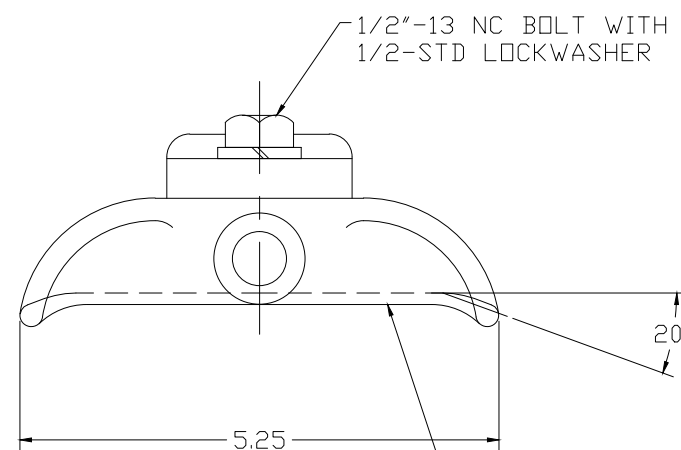
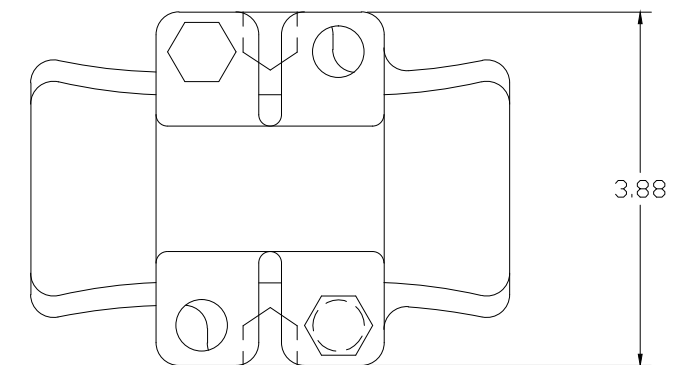
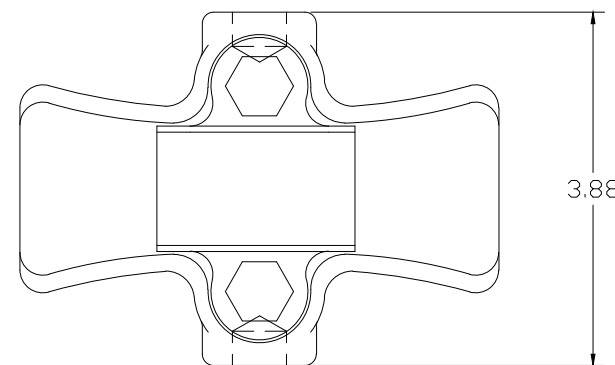


FIGURE 1

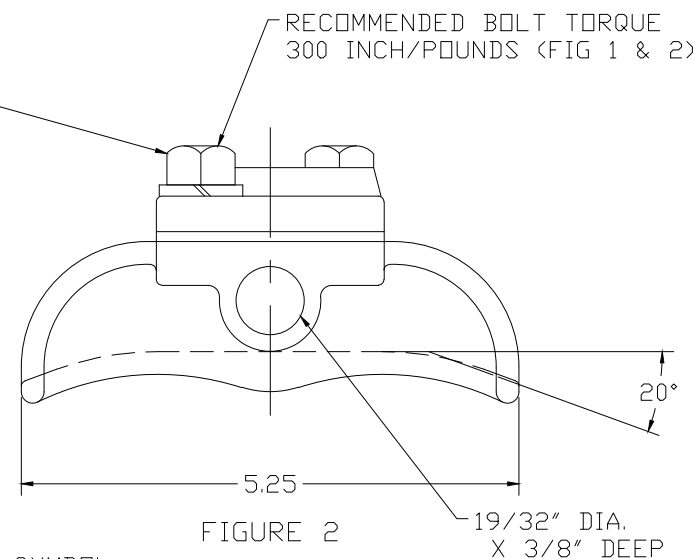


FIGURE 2



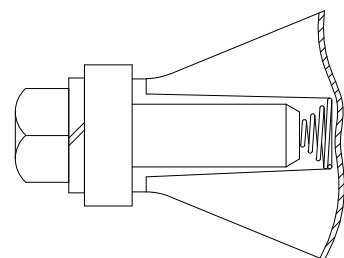
IEC STANDARD HOT-SURFACE SYMBOL ON HI-TEMP TSCHT VERSIONS

SPECIFICATIONS:

1. CLAMP BODIES AND KEEPERS ARE OF HIGH STRENGTH ALUMINUM ALLOY AND HEAT TREATED.
2. BOLTS AND NUTS ARE HOT-DIP GALVANIZED STEEL.
3. ANTI-STATIC SPRINGS ARE OF 302 STAINLESS STEEL.

NOTE:

1. DIMENSIONS IN INCHES
2. LOADS IN POUNDS
3. SUFFIX NRF ADDED TO CATALOG NUMBER INDICATES NON-REFLECTIVE FINISH. CUSTOMER TO SPECIFY.
4. BCH SUFFIX INDICATES CLAMP FOR BC HYDRO WITH CONE TYPE BOLT.
5. ANTI-STATIC SPRING (RIV) MAY BE FURNISHED UPON REQUEST AND CAN BE SUPPLIED BY ADDING "ARIV" SUFFIX TO CATALOG NUMBER.
EXAMPLE: TSC-200-ARIV
6. HIGH TEMPERATURE ALLOY CLAMPS TSCHT-150 AND 200 ARE PERMANENTLY MARKED WITH IEC STANDARD HOT-SURFACE SYMBOL.



ANTI STATIC SPRING (SEE NOTE 5)

58066	10/16/14	WJI	WJI	ANDERSON® TOLERANCE CHART	HUBBELL® POWER SYSTEMS TRUNNION CLAMPS ALUMINUM
EC #	DATE	CHG BY	RESP ENG		
DESC OF DWG: REDRAWN IN CAD ADDED THE TSCHT-150 AND 200 ADD TSC-242 CORRECTED NOTE NUMBER REFERENCE FOR SPRING REASON (S) FOR CHANGE: -- DISPOSITION OF MAT'L: --				CONFIDENTIAL: THIS DRAWING AND ITS CONTENTS ARE CONFIDENTIAL AND THE EXCLUSIVE PROPERTY OF HUBBELL POWER SYSTEMS. NO PUBLICATION, DISTRIBUTION OR COPIES MAY BE MADE WITHOUT THE WRITTEN CONSENT OF HUBBELL POWER SYSTEMS. HUBBELL POWER SYSTEMS UNPUBLISHED ALL RIGHTS RESERVED UNDER THE COPYRIGHT LAWS.	TITLE TRUNNION CLAMPS ALUMINUM
SIZE B		DWG NO. C-11447		CAT / PART / ASSY NO. TSC-X	
DO NOT SCALE THIS DRAWING		DRN BY WSB	DATE 07-28-03	SHEET 1 OF 1	