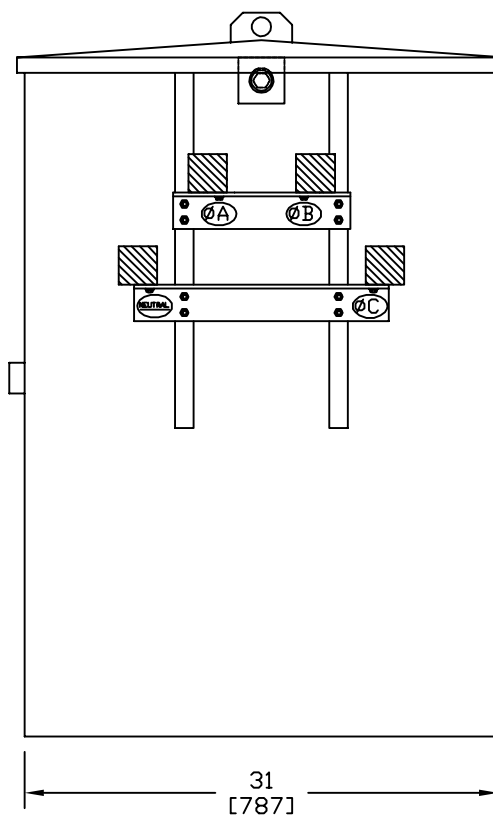
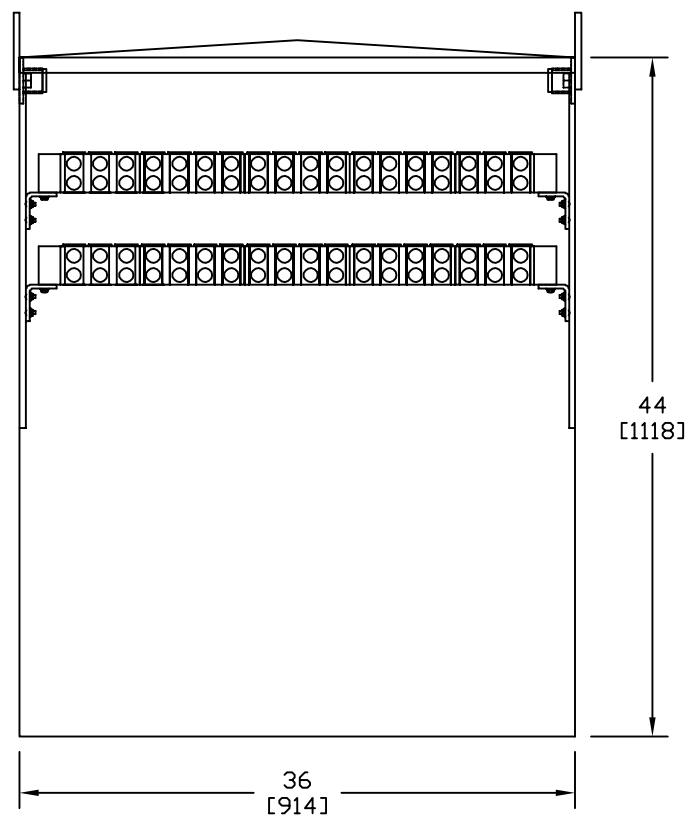
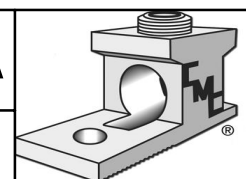


| S.NO | CATALOG NUMBER | CONDUCTOR RANGE AWG | AMP.RATING-COPPER | AMP.RATING-ALUMINUM |
|------|----------------|---------------------|-------------------|---------------------|
| 1 | LPTE18-750LI | 750-2 | 5225 | 4235 |
| 2 | LPTE18-1000LI | 1000-1/0 | 4905 | 4005 |



- ALUMINIUM ENCLOSURE IS LIGHTWEIGHT, LOW MAINTENANCE AND HAS EXCELLENT CORROSION RESISTANCE
- ALL-WELDED CONSTRUCTION: WELDS AND SEAMS ARE GROUND SMOOTH
- REMOVABLE SWINGING DOORS - DOORS HAVE STAINLESS STEEL LIFT OFF HINGES WITH STAINLESS STEEL THREE-POINT LOCKING HANDLES AND RECESSED STAINLESS-STEEL PENTA-HEAD BOLTS FOR SECURITY
- FINISH IS MUNSELL GREEN, OVEN CURED POWDER COAT
- ALL MOUNTING HARDWARE IS 18-8 STAINLESS STEEL
- ALUMINIUM MECHANICAL BAR CONNECTOR ELIMINATES COMPRESSION TOOLS, LUGS AND BOLT ASSEMBLIES
- UNIQUE LAY-IN FEATURE REDUCES FRUSTRATION OF FEEDING MULTIPLE CONDUCTORS THROUGH STANDARD CONNECTORS
- EACH OUTLET HAS A REMOVABLE "KEEPER" THAT ALLOWS CONDUCTORS TO BE LAID INTO THE OUTLET, SOLVING THE PROBLEM OF TRYING TO BEND LARGE CONDUCTORS IN CONFINED AREAS. THE "KEEPER" IS THEN SLID OVER THE CONDUCTOR AND THE SETSCREWS ARE TIGHTENED. IT IS FAST AND EASY AT INITIAL INSTALLATIONS AND FOR LATER SERVICE ADDITIONS
- CONNECTORS ARE FABRICATED FROM 6061-T6 ALUMINIUM ALLOY FOR CONDUCTIVITY AND STRENGTH
- FULLY TESTED TO ANSI C119.4 FOR CLASS "A" CONNECTORS

| | | | | | | | | |
|------|---------------------|-----|----------|-------|--|--------------------------|-------------------------------------|--------------------------------|
| | | | | | TO ORDER CMC PRODUCTS CALL 1-513-860-4455 | DRAWN BY: TS 08-31-20 | NAME OF PART: ENCLOSURE ASSEMBLY | CAT. NO.: LPTE18-750/1000LI |
| | | | | | FOR PRODUCT INFO: http://www.cmcclugs.com | CHECKED BY: | DRAWING NO: U22700136I-S | A |
| A | NEW DRAWING CREATED | | 08-31-20 | TS | | DRAWING NOT TO SCALE | | SHEET NO: 1 OF 1 |
| REV. | DESCRIPTION | ECN | DATE | INIT. | | | | |



THIS INFORMATION IS PROPRIETARY TO CONNECTOR MFG. CO. AND IS NOT TO BE DISCLOSED OUTSIDE OF CONNECTOR MFG. CO. WITHOUT A CONFIDENTIALITY AGREEMENT



CONNECTOR MANUFACTURING CO.

HAMILTON, OHIO