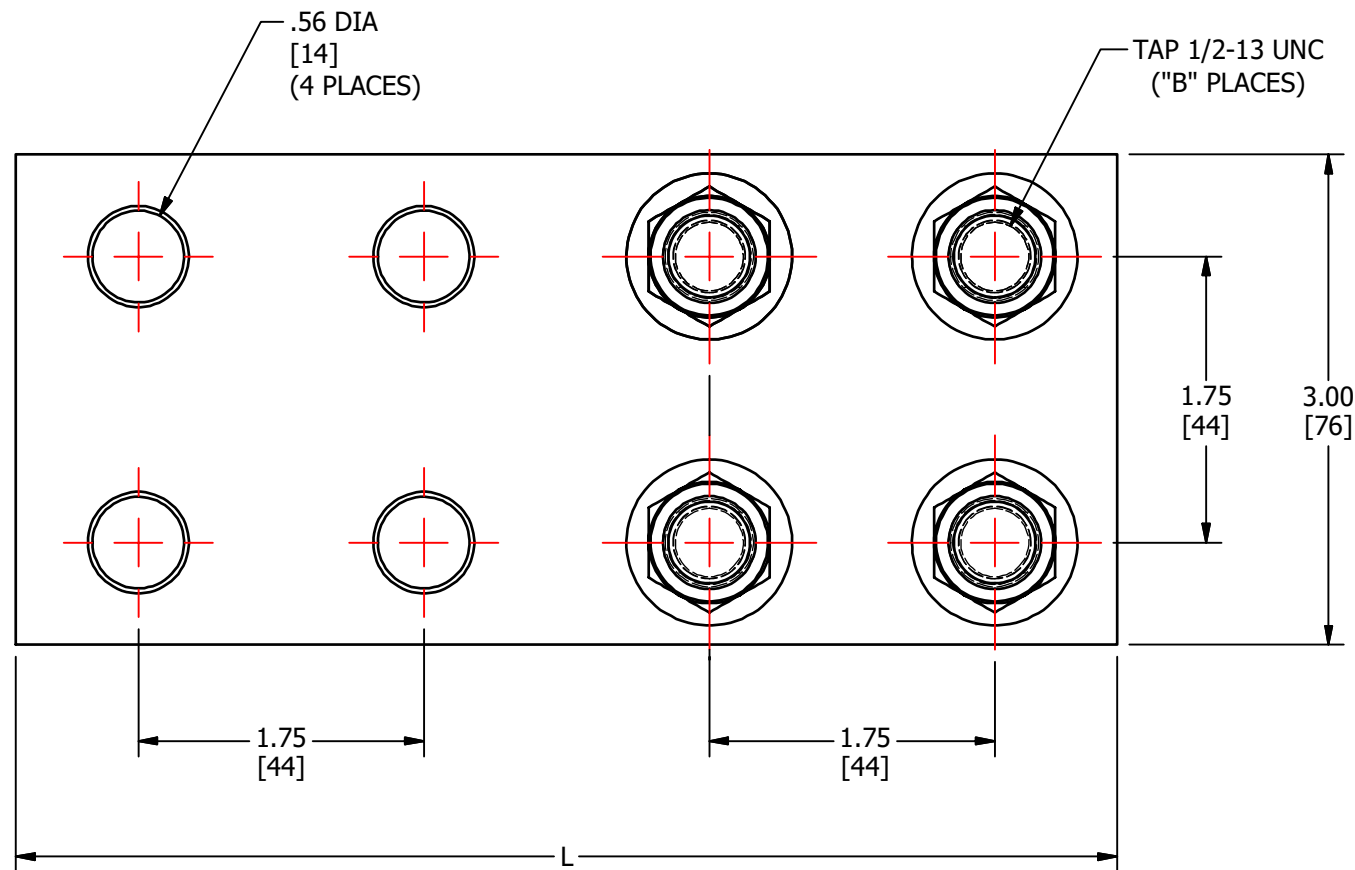
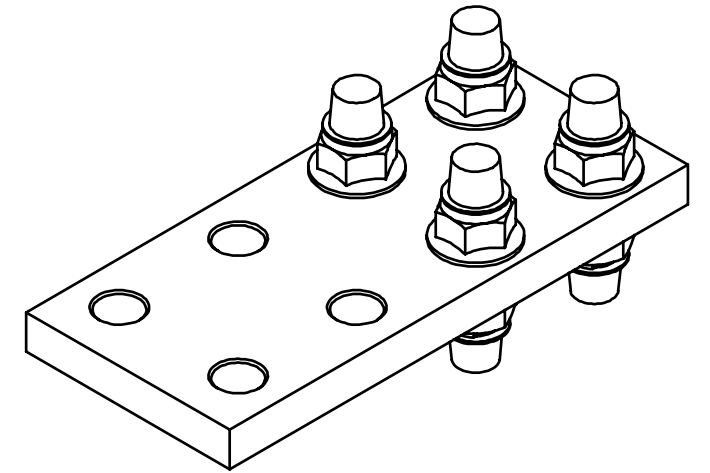
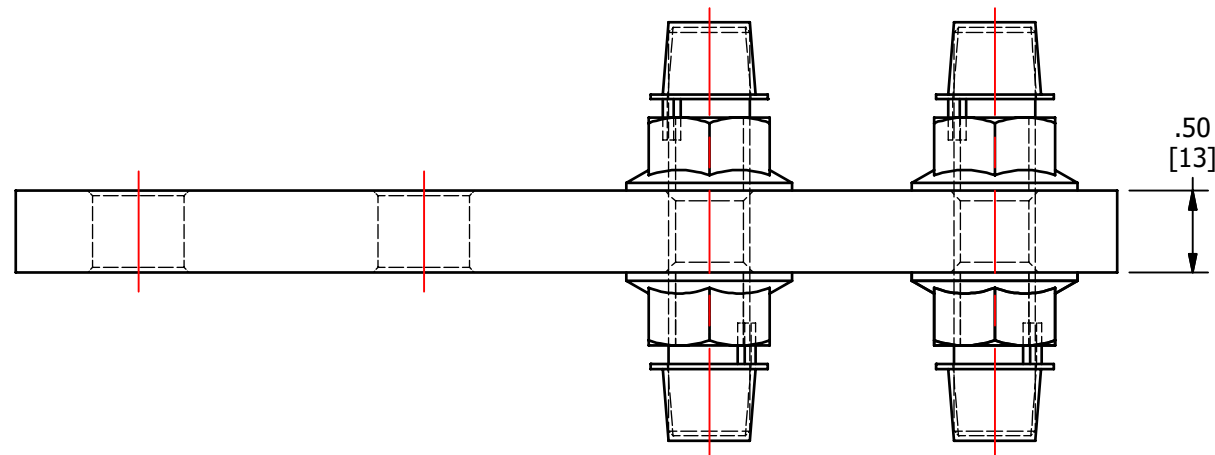
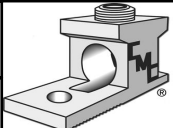


S.NO	CATALOG NUMBER	L	"B" PLACES (NUMBER OF HOLES)	FINISH
1	FPX44	6.75 [171]	4	CLEAR PLATE
2	FPX46	8.50 [216]	6	CLEAR PLATE
3	FPX46TP	8.50 [216]	6	TIN PLATE
4	FPX48	10.25 [260]	8	CLEAR PLATE
5	FPX48TP	10.25 [260]	8	TIN PLATE



REV.	DESCRIPTION	ECN	DATE	INIT.
A	NEW DRAWING CREATED		03/26/19	TS

TO ORDER CMC PRODUCTS CALL 1-513-860-4455  FOR PRODUCT INFO: <a href="http://www.cmcclugs.com">http://www.cmcclugs.com</a>	DRAWN BY: TS 03/26/19	NAME OF PART: FLAT PAD EXTENDER ASSEMBLY	CAT. NO.: SEE TABLE
	CHECKED BY:	DWG NO.: U55700738-S (CHARTED)	<b>B</b> 
DRAWING NOT TO SCALE		SHEET NO: 1 OF 1	

THIS INFORMATION IS PROPRIETARY TO CONNECTOR MFG. CO. AND IS NOT TO BE DISCLOSED OUTSIDE OF CONNECTOR MFG. CO. WITHOUT A CONFIDENTIALITY AGREEMENT



**CONNECTOR MANUFACTURING CO.**

HAMILTON, OHIO