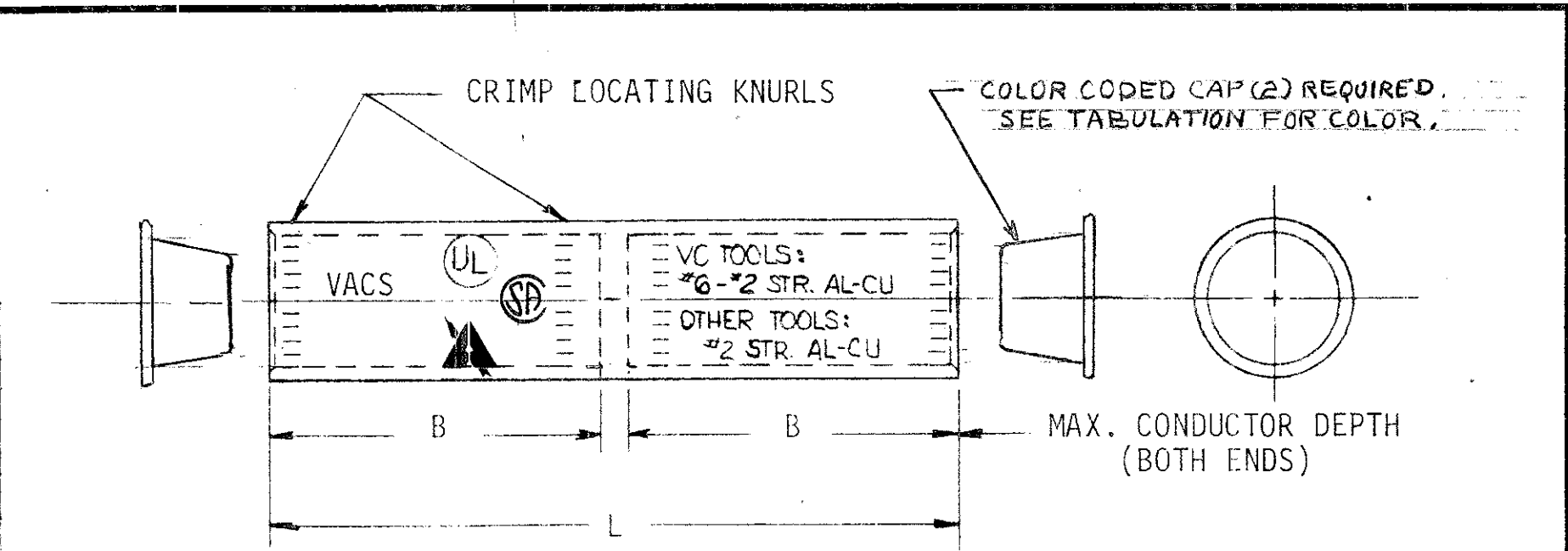


R/2 Added Color Code		CRPS		ICR-4703 9-14-87 AKC	
R/9 REMOVED "NOT FOR A CU TO CU" NOTE		R/10 DIM. WAS 1/8" L WAS 2 3/8"		VACS-1 8" DIM. WAS 1/8" L WAS 2 3/8"	
4-6-93 JAP		ADDED C.S.A. SYMBOL		JCI	
VCS-350 WAS ADDED		KML		JCI	

REVISIONS	NO.	DATE	DESCRIPTION	BY
4	7-21-83	ADD VCS-1 TOOL FOR 1" L WAS 1 1/8"	AC	
5	5-14-84	VACS-1 8" DIM. WAS 1/8" L WAS 2 3/8"	AN	
6	4-7-87	ADDED C.S.A. SYMBOL	JCI	
8	9-27-89	VCS-350 WAS ADDED	KML	

REVISIONS	NO.	DATE	DESCRIPTION	BY
1	12/6/77	400" O.A. LGTH. WAS 4.12"	TW	
2	8/22/80	ADDED FOR GENERAL... TO NOTE 2	CM	
3	9-24-80	ADDED "UL486C" TO NOTE 2	JEH	



- NOTES:
- MATERIAL: TIN PLATED ALUMINUM.
  - PARTS MEET UNDERWRITER'S LABORATORY APPROVAL FOR GENERAL PURPOSE USE, UL 486 B & C 90°C.
  - PARTS ARE FURNISHED WITH CONDUCTOR CAVITY PREFILLED WITH A "VERSA-SEAL" INHIBITOR.
  - FOR RECOMMENDED TOOLS, DIES AND NUMBER OF CRIMPS FOR EACH CONNECTION, REFER TO "INSTALLATION TOOL AND DIE REFERENCE" DRAWINGS: M-7297, M-7298, M-7299 and M-7300 & M-7821
  - PARTS ARE C.S.A. APPROVED.

CATALOG NUMBER	CAP COLOR CODE (SEE NOTE 4)	STRANDED CONDUCTOR SIZE(S)		DIMENSIONS IN INCHES (MM)	
		FOR ANDERSON VERSA CRIMP COMPRESSION TOOL(S)	FOR OTHER RECOMMENDED COMPRESSION TOOL(S)	B	L
VACS-8	BLUE	#8 STR. AL-CU (VCS-350 ONLY)	#8 STR. AL-CU	7/8 (22.2)	1 7/8 (47.6)
VACS-6	GRAY	#6 STR. AL-CU (VCS-350 ONLY)	#6 STR. AL-CU	7/8 (22.2)	1 7/8 (47.6)
VACS-4	GREEN	#4 STR. AL-CU (VCS-350 ONLY)	#4 STR. AL-CU	1 (25.4)	2 1/8 (54)
VACS-2	PINK	#6-#2 STR. AL-CU	#2 STR. AL-CU	1 1/8 (28.6)	2 3/8 (60.3)
VACS-1	TAN	#8-#1 STR. AL-CU	#1 STR. AL-CU	1 5/16 (33.3)	2 11/16 (68.3)
VACS-1/0	TAN	#8-1/0 STR. AL-CU	1/0 STR. AL-CU	1 5/16 (33.3)	2 11/16 (68.3)
VACS-2/0	OLIVE	#4-2/0 STR. AL-CU	2/0 STR. AL-CU	1 5/16 (33.3)	2 11/16 (68.3)
VACS-3/0	RUBY	#4-3/0 STR. AL-CU	3/0 STR. AL-CU	1 5/16 (33.3)	2 11/16 (68.3)
VACS-4/0	WHITE	#2-4/0 STR. AL-CU	4/0 STR. AL-CU	1 5/8 (41.3)	3 3/8 (85.7)
VACS-250	RED	1/0 STR-250 MCM AL-CU	250 MCM AL-CU	1 5/8 (41.3)	3 3/8 (85.7)
VACS-300	BLUE	1/0 STR-300 MCM AL-CU	300 MCM AL-CU	1 5/8 (41.3)	3 3/8 (85.7)
VACS-350	BROWN	2/0 STR-350 MCM AL-CU	350 MCM AL-CU	2 7/16 (62)	5 (127)
VACS-400	GREEN	3/0 STR-400 MCM AL-CU	400 MCM AL-CU	2 7/16 (62)	5 (127)
VACS-500	GREEN	4/0 STR-500 MCM AL-CU	500 MCM AL-CU	2 7/16 (62)	5 (127)
VACS-600	PINK	350-600 MCM AL 350-500 MCM CU	600 MCM AL-CU	2 15/16 (74.6)	6 (152.4)
VACS-750	PINK	500-750 MCM AL 500 MCM CU	750 MCM AL	2 15/16 (74.6)	6 (152.4)
VACS-1000	BROWN	750-1000 MCM AL	1000 MCM AL	3 1/8 (79.4)	6 3/8 (161.9)

DATE	11-8-77	AC-1K	R101 23456789
DWN BY	TW	COMPRESSION SPLICE	ANDERSON ELECTRICAL CONNECTORS SQUARE D COMPANY LEEDS ALABAMA
APPROVED	CDM	CAT. NO.	VACS
SCALE	DO NOT	DWG. NO.	C-11383