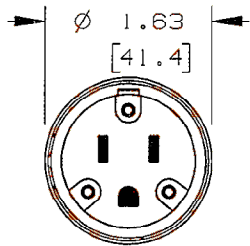
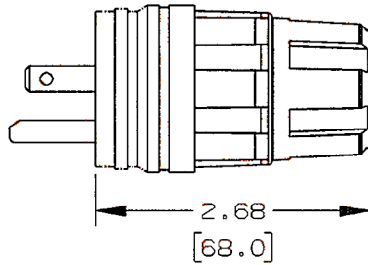


M-11446 3

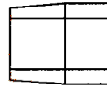


TYPICAL FACE

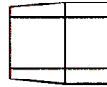


GROMMETS

YELLOW
 \varnothing .37 ID
 \varnothing [9.4] ID



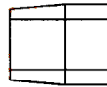
TAN
 \varnothing .45 ID
 \varnothing [11.4] ID



RED
 \varnothing .56 ID
 \varnothing [14.2] ID



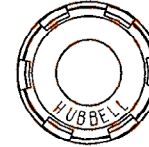
BLUE
 \varnothing .61 ID
 \varnothing [15.5] ID



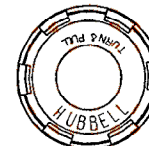
FERRULE



NUT,



SUPPLIED W/
NON-LOCKING PLUGS



SUPPLIED W/
LOCKING PLUGS

CATALOG NO.	14W07H	14W47H	14W33H	14W49H	14W48H	24W47H	24W49H	24W34H
NEMA CONFIG	 NON-NEMA	 5-15P	 5-20P	 6-15P	 6-20P	 L5-15P	 L6-15P	 L7-15P
RATING	15A, 125V / 10A, 250V	15A, 125V	20A, 125V	15A, 250V	20A, 250V	15A, 125V	15A, 250V	15A, 277VAC
POLES/WIRES	3P/3W NON-GROUNDING	2P/3W GROUNDING	2P/3W GROUNDING	2P/3W GROUNDING	2P/3W GROUNDING	2P/3W GROUNDING	2P/3W GROUNDING	2P/3W GROUNDING

NOTES:

- DIMENSIONS SHOWN ARE TYPICAL. DIMENSION UNITS: INCHES [mm].
 - DEVICES ARE UL LISTED PER UL 498 EXCEPT 14W07H.
 - DEVICES ARE CSA CERTIFIED PER CSA C22.2 NO.42.
 - FOUR GROMMET STRAIN RELIEF ACCOMMODATE ROUND CORD TYPES S & SJ 18/3 TO 12/3, 0.300 TO 0.625" DIAMETER, (7.6 to 15.9 mm).
 - CERTAIN DEVICES AVAILABLE IN BLACK BODY/YELLOW FACE.
 - THIS PRODUCT HAS BEEN TESTED TO NEMA ENCLOSURE TYPES 3R, 4, 4X, 6, 6P AND IEC CLASSIFICATION IP67 WHEN THE CLOSURE CAP IS CLOSED OR WHEN MATED WITH AN EQUIVALENT RATED WATERTIGHT DEVICE.
- WARNING! RISK OF ELECTRICAL SHOCK. DO NOT SUBMERGE.**
 THE ENCLOSURE RATINGS 6, 6P & IP67 OF THIS PRODUCT ARE ONLY INTENDED TO DEMONSTRATE SUPERIOR RESISTANCE TO WATER INGRESS AND NOT FOR SUBMERSION.

LIST OF PARTS

DESCRIPTION	MATERIAL	FINISH
NUT	PBT THERMOPLASTIC	GRAY
GROMMETS	THERMOPLASTIC ELASTOMER	VARIOUS
FERRULE	POLYPROPYLENE	NATURAL
BLADES	BRASS	NICKEL
TERMINAL SCREWS	STEEL	CHROMATE
PLUG BODY	PBT THERMOPLASTIC	YELLOW
SHELL BODY	THERMOPLASTIC ELASTOMER	YELLOW
SHELL INSERT	POLYPROPYLENE	NATURAL
BODY/FACE SCREWS	STAINLESS STEEL	
DRIVE SCREWS	STEEL	CHROMATE
RETAINER CAP	POLYCARBONATE	CLEAR

--	--	--

--	--	--

--	--	--

3	REVISED NOTES 2 & 3 PER DCN 19129 MAM <i>MAM</i>	TLS	10/02/12
2	REVISED NOTES 2 & 3 & RATING OF 14W07H PER DCN 18692 MAM	TLS	04/09/12
1	INITIAL RELEASE PER DCN 16122 MAM	TLS	01/25/10
SYM	REVISIONS	APP	DATE

THE DESIGN AND DIMENSIONS OF THE PRODUCT SHOWN ON THIS DRAWING ARE SUBJECT TO CHANGE WITHOUT NOTICE

TITLE
 WATERTIGHT PLUGS
 CUSTOMER DRAWING

TOLERANCES UNLESS OTHERWISE SPECIFIED	WIRING DEVICE-KELLENS HUBBELL INCORPORATED SHELTON, CT
.XX : ±.01 .XXX : ±.005 ANGLES : ±2°	DR. BY MAM APP. BY TLS TR. BY SCALE NTS CHK. BY TLS DATE 11/05/09