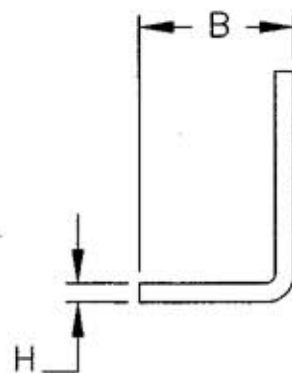
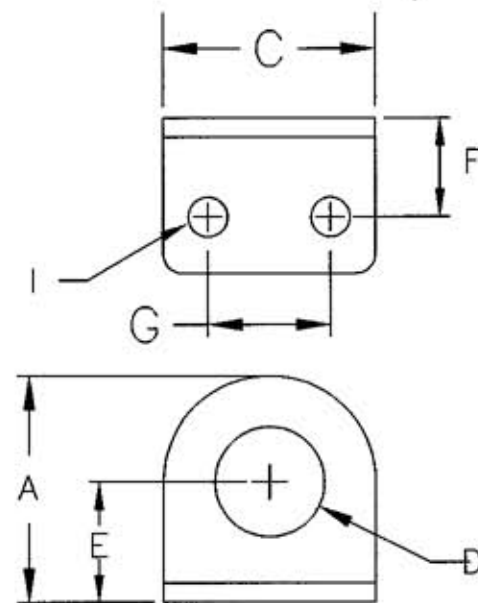


# M-8788 1

## LIST OF PARTS

DESCRIPTION	MATERIAL	FINISH
ANGLE BRACKET	STAINLESS STEEL	

HUBBELL MODEL	A	B	C	D	E	F	G	H	I	WEIGHT (OZ.)
AB12	29.3 (1.16)	25.4 (1.00)	31.8 (1.25)	12.1 (0.48)	13.5 (0.53)	13.5 (0.53)	19.1 (0.75)	3.02 (0.12)	5.6 (0.22)	1.2
AB18	37.3 (1.47)		34.9 (1.38)	18.1 (0.71)	19.8 (0.78)	19.8 (0.78)	25.4 (1.00)		6.0 (0.24)	1.3
AB22	37.3 (1.47)		22.1 (0.87)	19.8 (0.78)	22.2 (.88)	19.8 (0.78)	22.2 (.88)		6.6 (0.26)	1.3
AB30	54.0 (2.13)	38.1 (1.50)	50.8 (2.00)	30.1 (1.19)	28.7 (1.13)	28.7 (1.13)	31.8 (1.25)		7.9 (0.31)	2.8
AB47	69.9 (2.75)		63.5 (2.50)	47.2 (1.85)	38.1 (1.50)	23.8 (.94)	38.1 (1.50)		9.9 (0.39)	3.8



1	5/3/02 "X" REMOVED; LAST "X" REVISION WAS X-0. RELEASED FOR PRODUCTION PER DCN #9320. GDR MJL	<i>MJL</i> 5/23/02	DATE
SYM	REVISIONS	APP	DATE

THE DESIGN AND DIMENSIONS OF THE PRODUCT SHOWN ON THIS DRAWING ARE SUBJECT TO CHANGE WITHOUT NOTICE

TITLE  
**ANGLE BRACKETS**

TOLERANCES UNLESS OTHERWISE SPECIFIED FRACTIONS ±/64 DECIMALS ±.005 ANGLES ±2°	WIRING DEVICE-KELLEMS HUBBELL INCORPORATED BRIDGEPORT, CT	
	DR. BY GDR	APP. BY <i>MJL</i>
	TR. BY	SCALE NONE
	CHK'D BY	DATE 5/3/02

UNLESS OTHERWISE SPECIFIED DIMENSIONS ARE IN mm (INCHES)

DIMENSION SHEET FOR CAT. NO.

SEE CHART

REPAIRABLE

NON-REPAIRABLE

B

**M-8788**

1