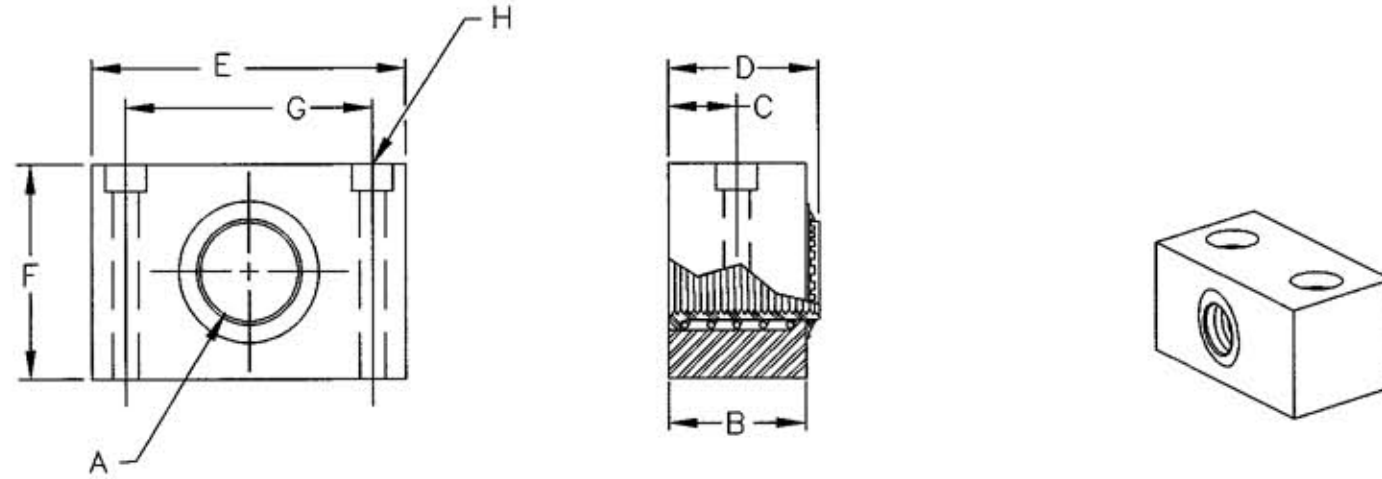


M-8781 | 1

HUBBELL MODEL	A	B	C	D	E	F	G	H	WEIGHT (OZ.)
BCSM-8	M8x1	19.0(0.75)	9.52(0.37)	22.1(0.87)	25.4(1.00)	15.8(0.62)	18.4(0.72)	FOR #6 SHCS	0.6
BCSM-12	M12x1	19.0(0.75)	9.52(0.37)	22.1(0.87)	38.1(1.50)	25.4(1.00)	24.8(0.98)	FOR #10 SHCS	1.4
BCSM-18	M18x1	25.4(1.00)	12.7(0.50)	29.7(1.17)	38.1(1.50)	31.7(1.25)	30.7(1.21)	FOR #8 SHCS	2.1
BCSM-30	M30x1	34.9(1.38)	17.5(0.68)	37.4(1.47)	63.5(2.50)	50.8(2.00)	51.5(2.03)	FOR 1/4" SHCS	8.9



UNLESS OTHERWISE SPECIFIED DIMENSIONS ARE IN mm (INCHES)

NOTES:

1. Housing blocks are all anodized aluminum.
2. Inside sleeves are all anodized aluminum except for -30 which is stainless steel.

LIST OF PARTS

DESCRIPTION	MATERIAL	FINISH
SEE NOTES		

DIMENSION SHEET FOR CAT. NO. SEE CHART

REPAIRABLE NON-REPAIRABLE

1	5/2/02 "X" REMOVED; LAST "X" REVISION WAS X-0. RELEASED FOR PRODUCTION PER DCN #9320. GDR MJL	<i>MJL</i>	5/23/02
SYM	REVISIONS	APP	DATE

THE DESIGN AND DIMENSIONS OF THE PRODUCT SHOWN ON THIS DRAWING ARE SUBJECT TO CHANGE WITHOUT NOTICE

TITLE CUSHIONED SENSOR MOUNTS, BLOCK TYPE

TOLERANCES UNLESS OTHERWISE SPECIFIED FRACTIONS ±1/64 DECIMALS ±005 ANGLES ±2°	WIRING DEVICE-KELLEMS HUBBELL INCORPORATED BRIDGEPORT, CT	
	DR. BY GDR	APP. BY <i>MJL</i>
	TR. BY	SCALE NONE
	CHK'D BY	DATE 5/2/02

M-8781