

M-13873

1

CONCENTRIC KNOCKOUTS

LOCATION	QUANTITY	TRADE SIZE
ENDS	1/END	1/2", 3/4"
ENDS	1/END	3/4", 1", 1-1/4", 1-1/2"
ENDS	1/END	1", 1-1/4", 1-1/2", 2"
SIDES	2/SIDE	3/4", 1", 1-1/4", 1-1/2"
BOTTOM	2	1/2", 3/4"
BOTTOM	4	1/2", 3/4", 1", 1-1/4"

LIST OF PARTS

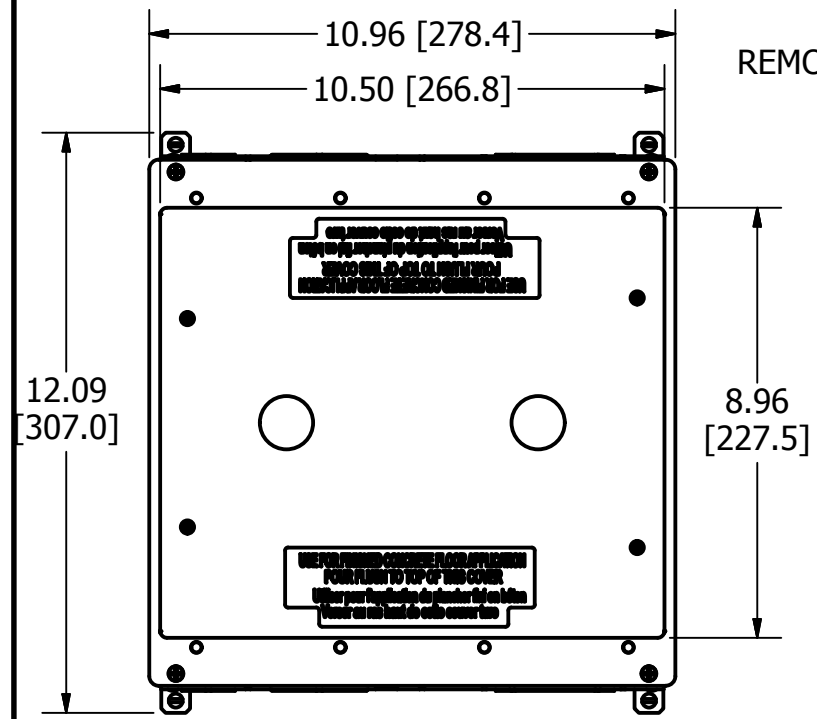
DESCRIPTION	MATERIAL	FINISH
BOX ASSEMBLY	16 GA. STEEL	ZINC **
TOP MOUNTING ASSY	14 GA. STEEL	ZINC
GROUND WIRES	COPPER	
WIRING CHANNEL	16 GA. STEEL	ZINC
REMOVABLE DIVIDERS	16 GA. STEEL	ZINC
FASTENERS	STEEL	ZINC
FLUSH TEMP COVER	16 GA. STEEL	ZINC
RAISED TEMP COVER	THERMOPLASTIC	YELLOW

DIMENSION SHEET FOR CAT. NO.
CFB10G55, CFB10G55CR

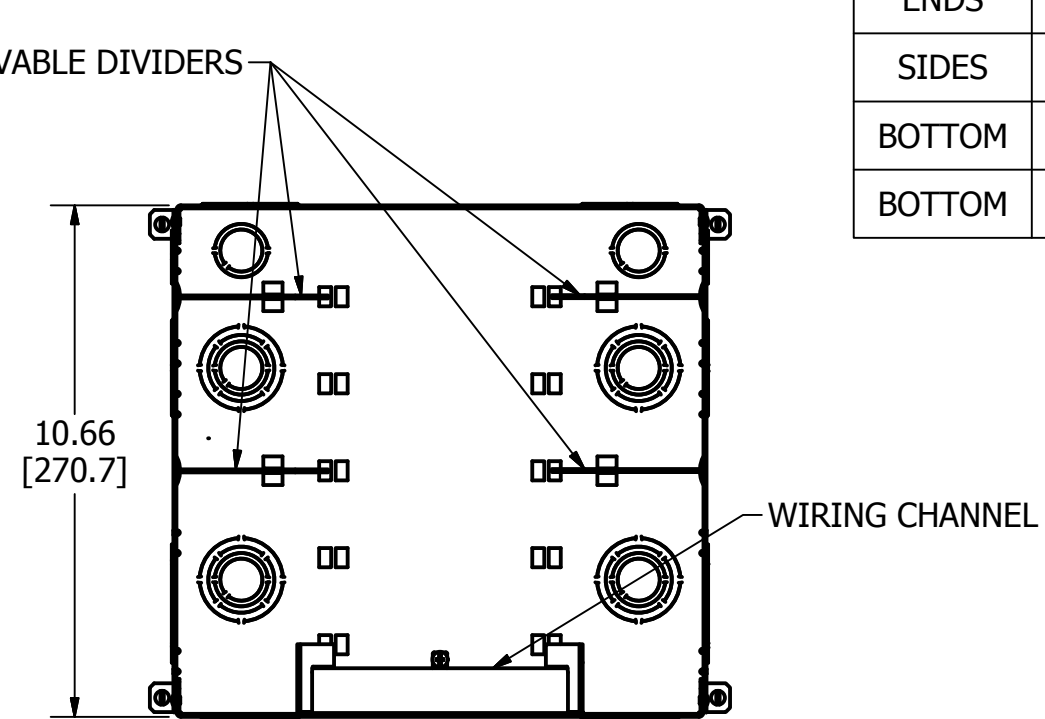
B

M-13873

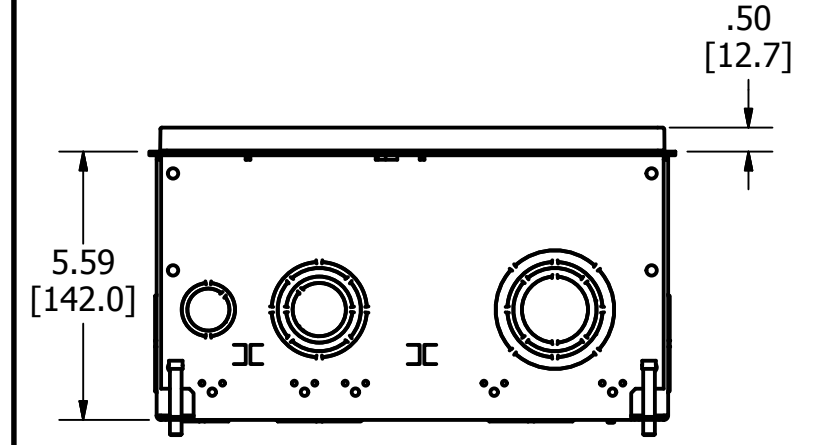
1



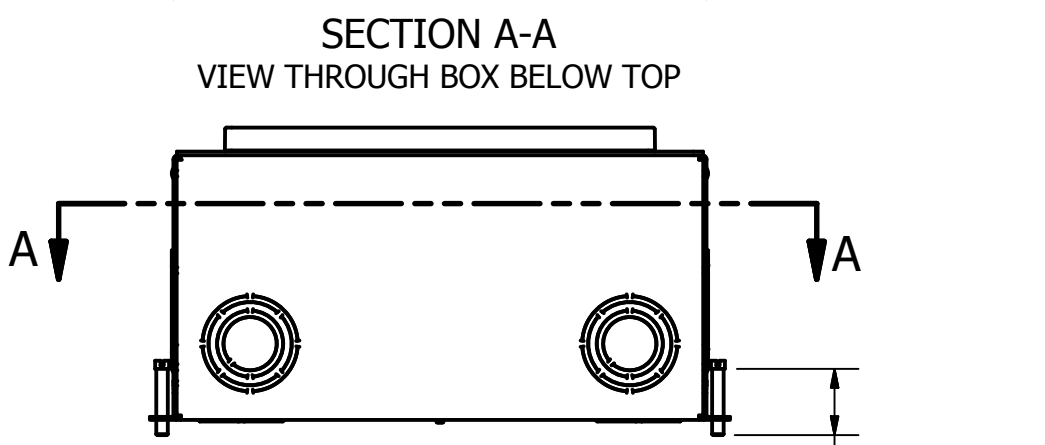
TOP VIEW



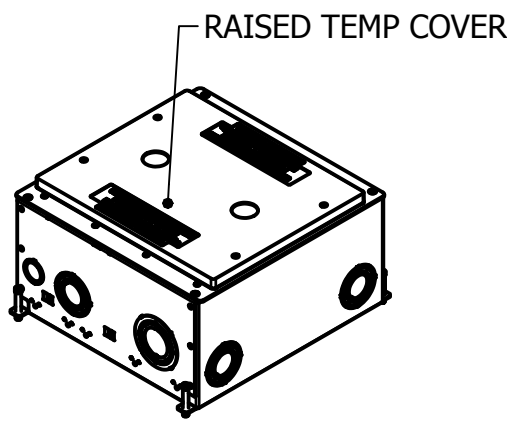
SECTION A-A
VIEW THROUGH BOX BELOW TOP



END VIEW



SIDE VIEW



ISOMETRIC


** CATALOG NO. CFB10G55CR BOX ASSEMBLY IS GALVANIZED AND EPOXY COATED ON EXTERIOR SURFACE.

- NOTES:
1. ALL DIMENSIONS ARE IN INCHES AND [MILLIMETERS].
 2. PRODUCT IS cULus LISTED. COMPLIES WITH UL 514A.
 3. EACH GANG SUPPLIED WITH 6" [152.4] 12 GA. AWG GROUND PIGTAIL.
 4. MINIMUM CONCRETE POUR: 5.59" [142.0].
 5. WIRING CHAMBER VOLUMES: (2) SMALL 25 IN³ [409.7 CM³], (2) MED 50 IN³ [819.4 CM³], (2) LARGE 71 IN³ [1163.5 CM³]
 6. WIRING CHANNEL AREA: 2.46 IN² [1589 MM²].

1	RELEASED PER DCN 23642	SBW	3/19/18
REV	DESCRIPTION	APP	DATE

THE DESIGN AND DIMENSIONS OF THE PRODUCT SHOWN ON THIS DRAWING ARE SUBJECT TO CHANGE WITHOUT NOTICE. DIMENSIONS ARE IN INCHES [mm].

TITLE
CONCRETE FLOOR BOX, 10 GANG FOR RECTANGULAR COVER, DEEP

 WIRING DEVICE-KELLEMS
HUBBELL INCORPORATED
SHELTON, CT

TOLERANCES UNLESS OTHERWISE SPECIFIED .XX = ±.01 .XXX = ±.005 ANGLE TOL. ±2'	DR. BY SBW	SCALE 1/4
CHK. BY	DATE 3/5/2018	