

M-13895

1

CONCENTRIC KNOCKOUTS

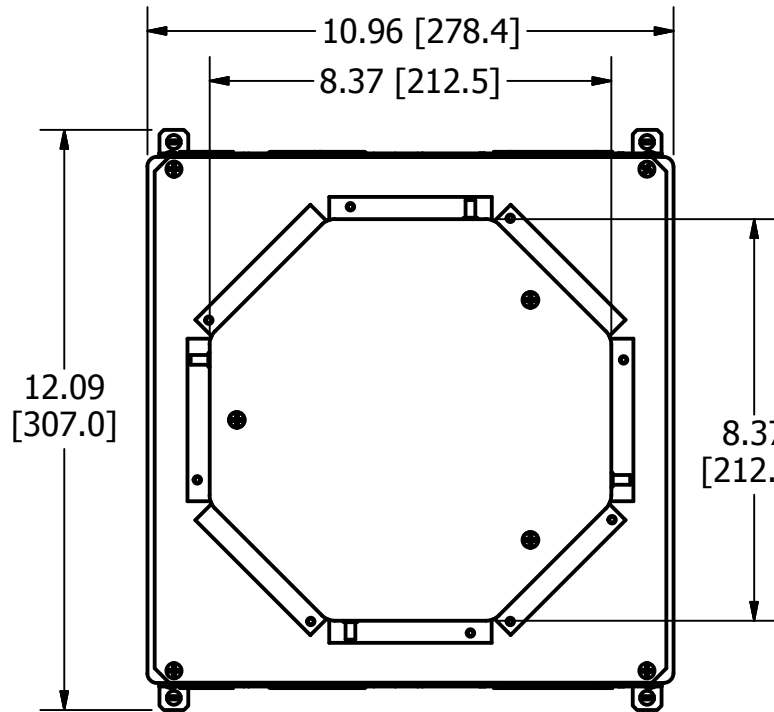
LOCATION	QUANTITY	TRADE SIZE
ENDS	1/END	1/2", 3/4"
ENDS	1/END	3/4", 1", 1-1/4", 1-1/2"
ENDS	1/END	1", 1-1/4", 1-1/2", 2"
SIDES	2/SIDE	3/4", 1", 1-1/4", 1-1/2"
BOTTOM	2	1/2", 3/4"
BOTTOM	4	1/2", 3/4", 1", 1-1/4"

LIST OF PARTS

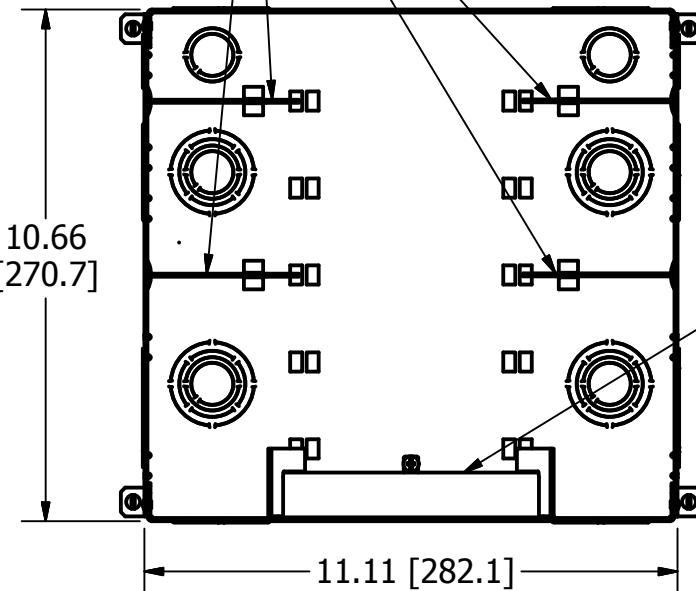
DESCRIPTION	MATERIAL	FINISH
BOX ASSEMBLY	16 GA. STEEL	ZINC **
TOP MOUNTING ASSY	14 GA. STEEL	ZINC
TRANSITION ASSY	14 GA. STEEL	ZINC
GROUND WIRES	COPPER	
WIRING CHANNEL	16 GA. STEEL	ZINC
REMOVABLE DIVIDERS	16 GA. STEEL	ZINC
FASTENERS	STEEL	ZINC
TEMP COVER	14 GA. STEEL	ZINC

DIMENSION SHEET FOR CAT. NO. CFB10G55R, CFB10G55RCR

REMOVABLE DIVIDERS



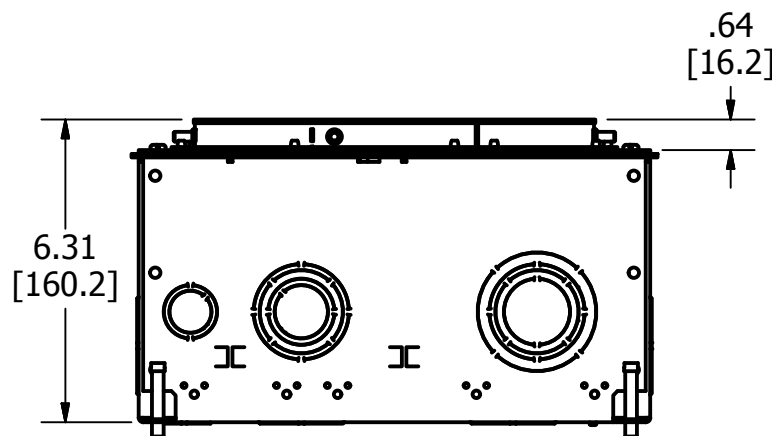
TOP VIEW



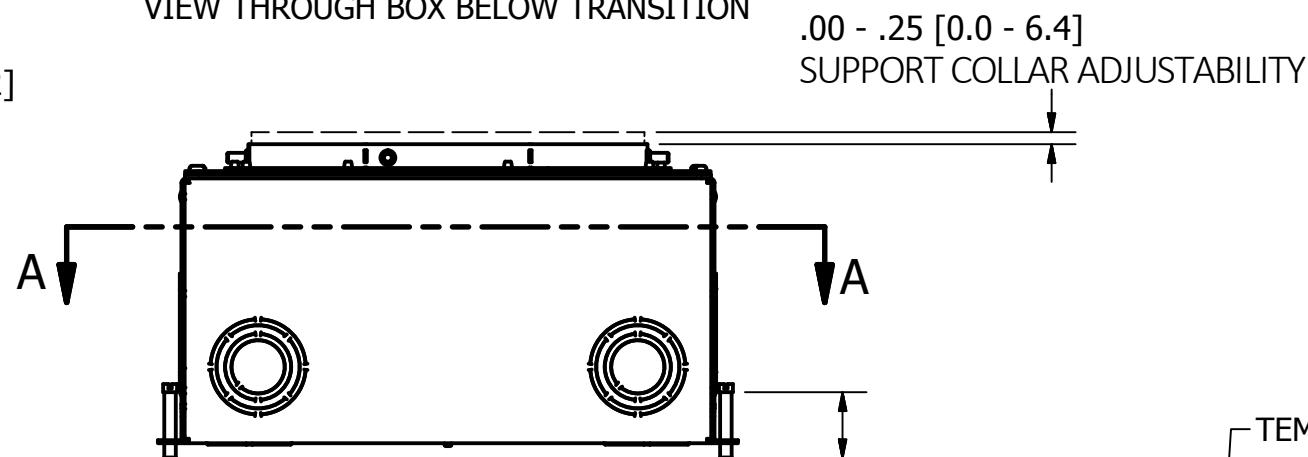
SECTION A-A

VIEW THROUGH BOX BELOW TRANSITION

WIRING CHANNEL

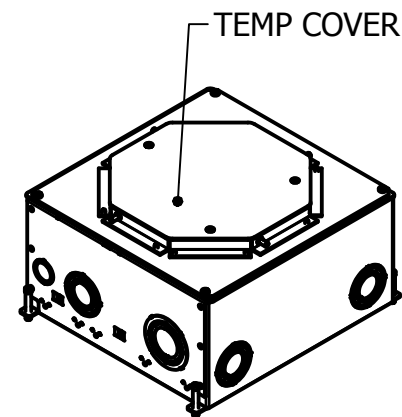


END VIEW



SIDE VIEW  
TEMP COVER NOT SHOWN

4X 1.38 [35.1]  
LEVELING SCREW



ISOMETRIC

\*\* CATALOG NO. CFB10G55RCR BOX ASSEMBLY IS GALVANIZED AND EPOXY COATED ON EXTERIOR SURFACE.

NOTES:

1. ALL DIMENSIONS ARE IN INCHES AND [MILLIMETERS].
2. PRODUCT IS cULus LISTED. COMPLIES WITH UL 514A.
3. EACH GANG SUPPLIED WITH 6" [152.4] 12 GA. AWG GROUND PIGTAIL.
4. MINIMUM CONCRETE POUR: 6.5" [165.1].
5. WIRING CHAMBER VOLUMES: (2) SMALL 25 IN<sup>3</sup> [409.7 CM<sup>3</sup>], (2) MED 50 IN<sup>3</sup> [819.4 CM<sup>3</sup>], (2) LARGE 71 IN<sup>3</sup> [1163.5 CM<sup>3</sup>]
6. WIRING CHANNEL AREA: 2.46 IN<sup>2</sup> [1589 MM<sup>2</sup>].

CAGE CODE 74545

1	RELEASED PER DCN 23642	SBW	3/19/18
REV	DESCRIPTION	APP	DATE

THE DESIGN AND DIMENSIONS OF THE PRODUCT SHOWN ON THIS DRAWING ARE SUBJECT TO CHANGE WITHOUT NOTICE. DIMENSIONS ARE IN INCHES [mm].

TITLE

CONCRETE FLOOR BOX, 10 GANG FOR 8" ROUND COVER, DEEP



WIRING DEVICE-KELLEMS  
HUBBELL INCORPORATED  
SHELTON, CT

TOLERANCES UNLESS OTHERWISE SPECIFIED  
.XX = ± .01  
.XXX = ± .005  
ANGLE TOL. ±2'

DR. BY SBW  
CHK. BY

SCALE 1/4  
DATE 3/5/2018

B

M-13895

1