

M-13869

1

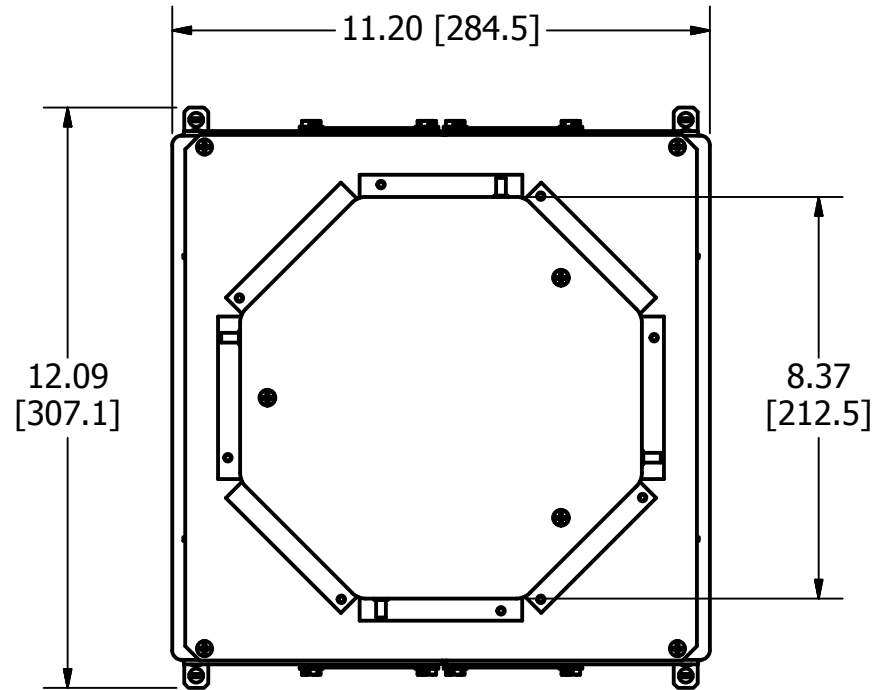
CONCENTRIC KNOCKOUTS

LOCATION	QUANTITY	TRADE SIZE
ENDS	2/END	3/4", 1", 1-1/4" SEE NOTE 7
SIDES	2/SIDE	1/2", 3/4", 1", 1-1/4"
BOTTOM	4	1/2", 3/4", 1", 1-1/4"

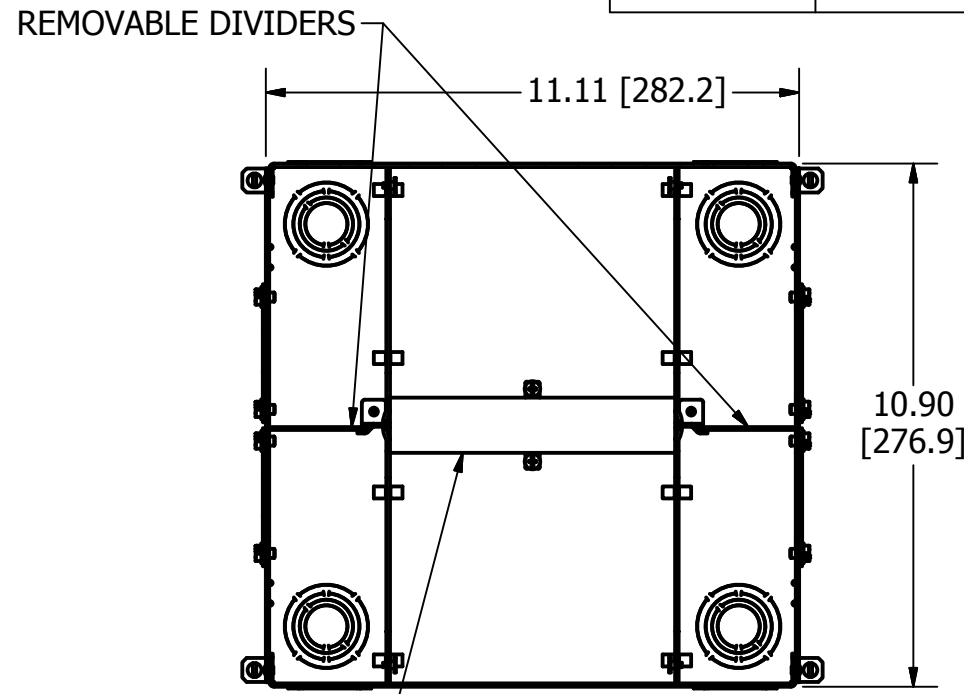
LIST OF PARTS

DESCRIPTION	MATERIAL	FINISH
BOX ASSEMBLY	16 GA. STEEL	ZINC **
TOP MOUNTING ASSY	14 GA. STEEL	ZINC
TRANSITION ASSY	14 GA. STEEL	ZINC
GROUND WIRES	COPPER	
WIRING CHANNEL	16 GA. STEEL	ZINC
REMOVABLE DIVIDERS	THERMOPLASTIC	
FASTENERS	STEEL	ZINC
TEMP COVER	14 GA. STEEL	ZINC

DIMENSION SHEET FOR CAT. NO. CFB4G30R, CFB4G30RCR

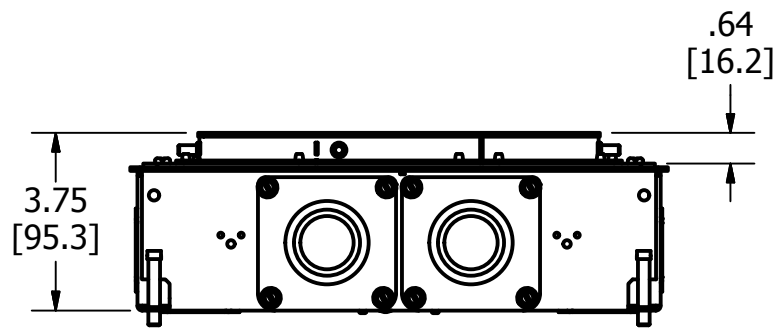


TOP VIEW

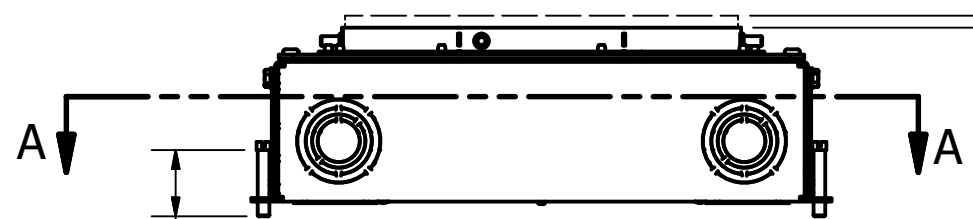


SECTION A-A
VIEW THROUGH BOX BELOW TRANSITION

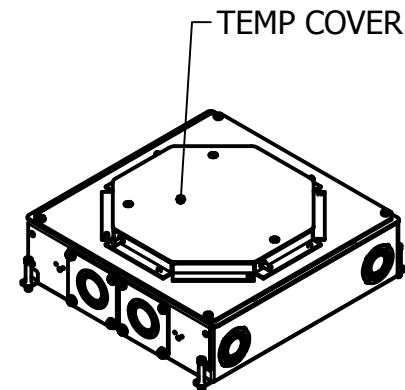
.00 - .25 [0.0 - 6.4]
SUPPORT COLLAR ADJUSTABILITY



END VIEW



4X 1.38 [35.1]
LEVELING SCREW
SIDE VIEW
TEMP COVER NOT SHOWN



ISOMETRIC

NOTES:

- ALL DIMENSIONS ARE IN INCHES AND [MILLIMETERS].
- PRODUCT IS cULus LISTED. COMPLIES WITH UL 514A.
- EACH GANG SUPPLIED WITH 6" [152.4] 12 GA. AWG GROUND PIGTAIL.
- MINIMUM CONCRETE POUR: 3.75" [95.3].
- WIRING CHAMBER VOLUMES (RECESSED COVER) : (4) 32.5 IN³ [632.6 CM³].
- WIRING CHANNEL AREA: (2) .40 IN² [261 MM²].
- 2" TRADE SIZE CONDUIT HUBS (CFBHUB2) MAY BE USED IN PLACE OF KO PLATES, SOLD SEPARATELY.

** CATALOG NO. CFB4G30RCR BOX ASSEMBLY IS GALVANIZED AND EPOXY COATED ON EXTERIOR SURFACE.

1	RELEASED PER DCN 23642	SBW	3/19/18
REV	DESCRIPTION	APP	DATE

THE DESIGN AND DIMENSIONS OF THE PRODUCT SHOWN ON THIS DRAWING ARE SUBJECT TO CHANGE WITHOUT NOTICE. DIMENSIONS ARE IN INCHES [mm].

TITLE
CONCRETE FLOOR BOX, 4 GANG FOR 8" ROUND COVER, DEEP



WIRING DEVICE-KELLEMS
HUBBELL INCORPORATED
SHELTON, CT

TOLERANCES UNLESS OTHERWISE SPECIFIED .XX = ±.01 .XXX = ±.005 ANGLE TOL. ±2'	DR. BY SBW	SCALE 1/4
	CHK. BY	DATE 3/5/2018