

M-13872

1

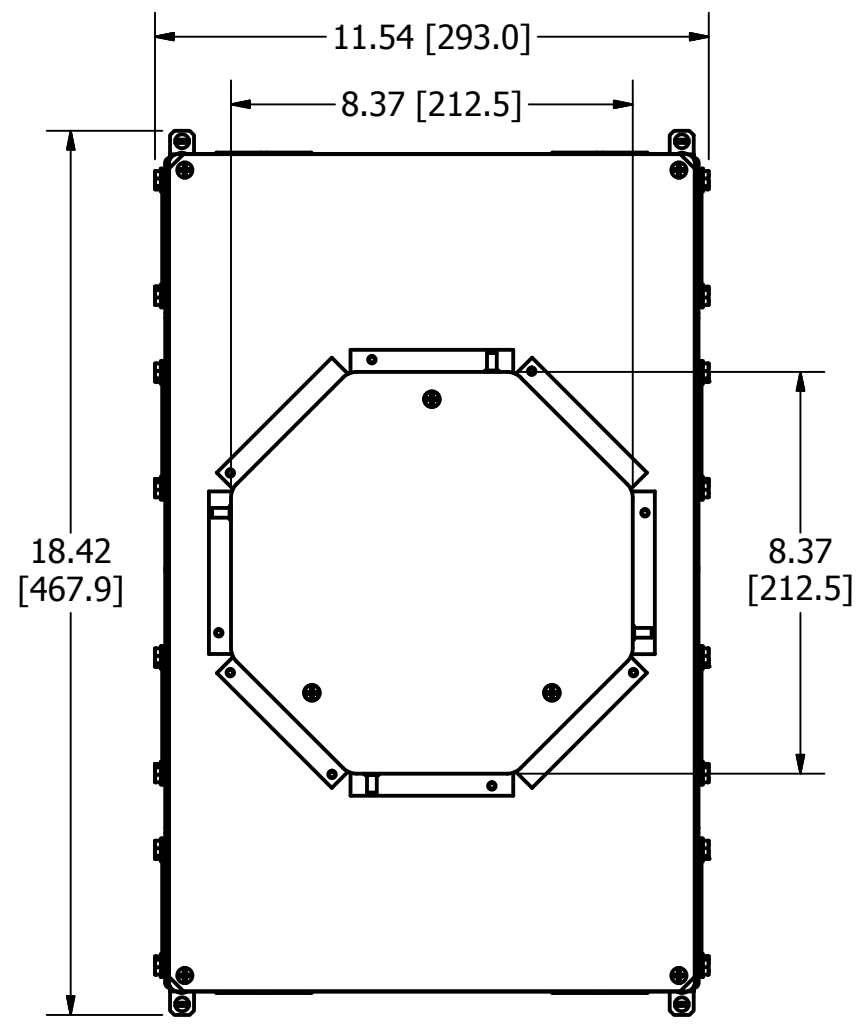
CONCENTRIC KNOCKOUTS

LOCATION	QUANTITY	TRADE SIZE
ENDS	2/END	3/4", 1", 1-1/4", 1-1/2"
SIDES	2/SIDE	3/4", 1", 1-1/4" SEE NOTE 7
BOTTOM	4	3/4", 1", 1-1/4", 1-1/2"
BOTTOM	4	1/2", 3/4"

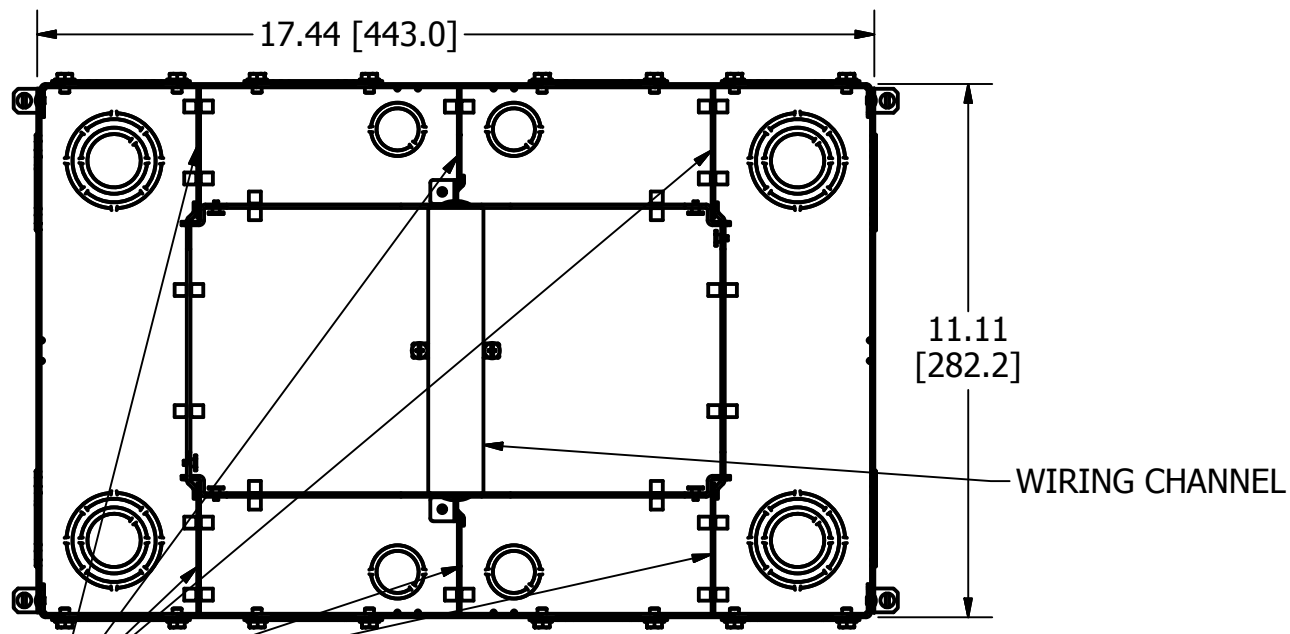
LIST OF PARTS

DESCRIPTION	MATERIAL	FINISH
BOX ASSEMBLY	16 GA. STEEL	ZINC **
TOP MOUNTING ASSY	14 GA. STEEL	ZINC
TRANSITION ASSY	14 GA. STEEL	ZINC
GROUND WIRES	COPPER	
WIRING CHANNEL	16 GA. STEEL	ZINC
REMOVABLE DIVIDERS	16 GA. STEEL	ZINC
REMOVABLE DIVIDERS	THERMOPLASTIC	
FASTENERS	STEEL	ZINC
TEMP COVER	14 GA. STEEL	ZINC

** CATALOG NO. CFB6G30RCR BOX ASSEMBLY IS GALVANIZED AND EPOXY COATED ON EXTERIOR SURFACE.

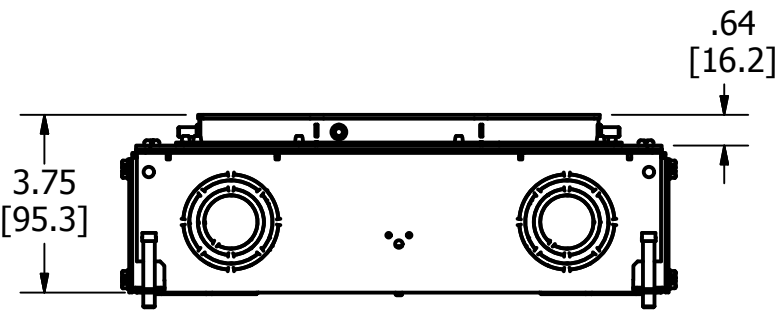


TOP VIEW

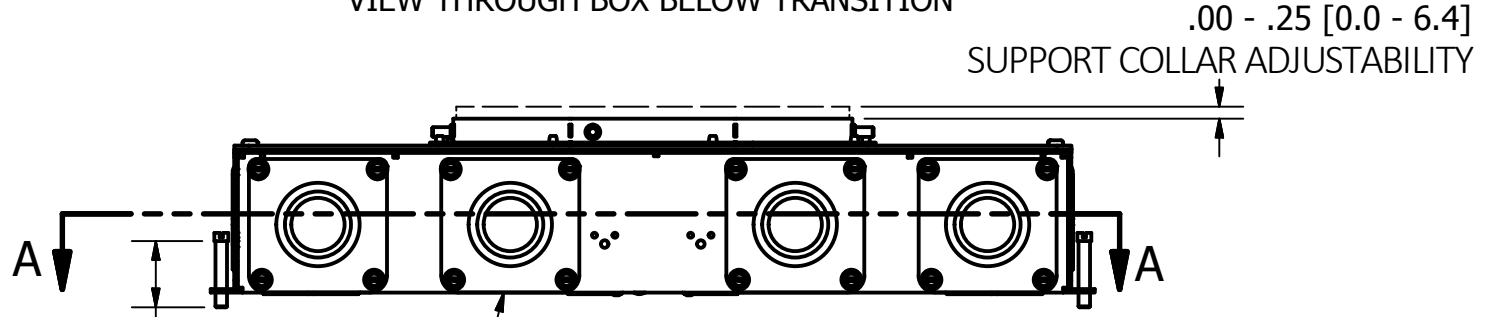


SECTION A-A

VIEW THROUGH BOX BELOW TRANSITION

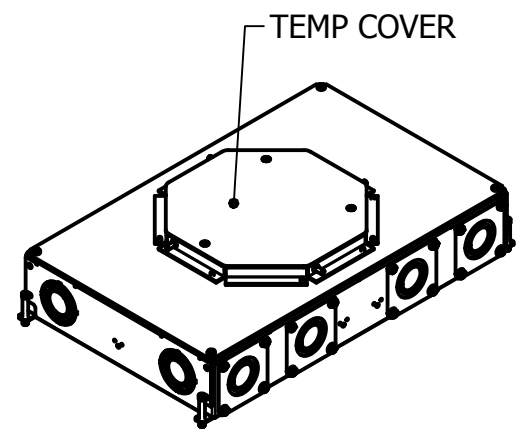


END VIEW



SIDE VIEW

TEMP COVER NOT SHOWN



ISOMETRIC

NOTES:

- ALL DIMENSIONS ARE IN INCHES AND [MILLIMETERS].
- PRODUCT IS cULus LISTED. COMPLIES WITH UL 514A.
- EACH GANG SUPPLIED WITH 6" [152.4] 12 GA. AWG GROUND PIGTAIL.
- MINIMUM CONCRETE POUR: 3.75" [95.3].
- WIRING CHAMBER VOLUMES: (2) END 89 IN³ [1458 CM³], (4) SIDE 33 IN³ [540 CM³].
- WIRING CHANNEL AREA: (2) .40 IN² [261 MM²].
- 2" TRADE SIZE CONDUIT HUBS (CFBHUB2) MAY BE USED IN PLACE OF KO PLATES, SOLD SEPARATELY.

1	RELEASED PER DCN 23642	SBW	3/19/18
REV	DESCRIPTION	APP	DATE

THE DESIGN AND DIMENSIONS OF THE PRODUCT SHOWN ON THIS DRAWING ARE SUBJECT TO CHANGE WITHOUT NOTICE. DIMENSIONS ARE IN INCHES [mm].

TITLE
CONCRETE FLOOR BOX, 6 GANG FOR 8" ROUND COVER, DEEP



WIRING DEVICE-KELLEMS
HUBBELL INCORPORATED
SHELTON, CT

TOLERANCES UNLESS OTHERWISE SPECIFIED .XX = ±.01 .XXX = ±.005 ANGLE TOL. ±2'	DR. BY SBW	SCALE 1/4
	CHK. BY	DATE 3/5/2018