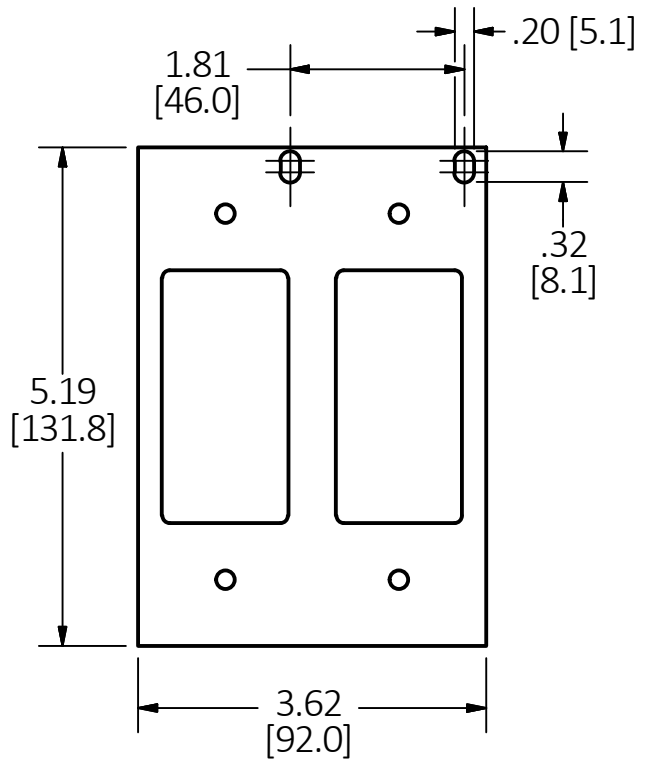
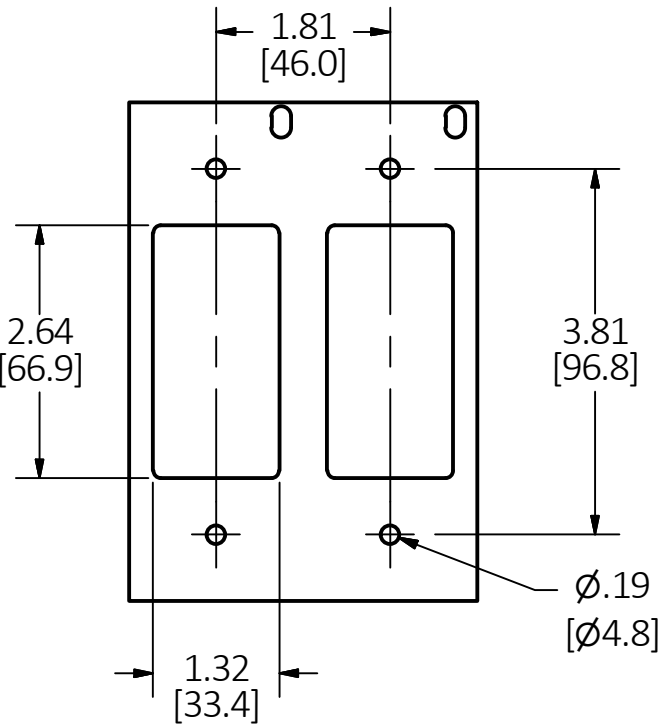


M-11844

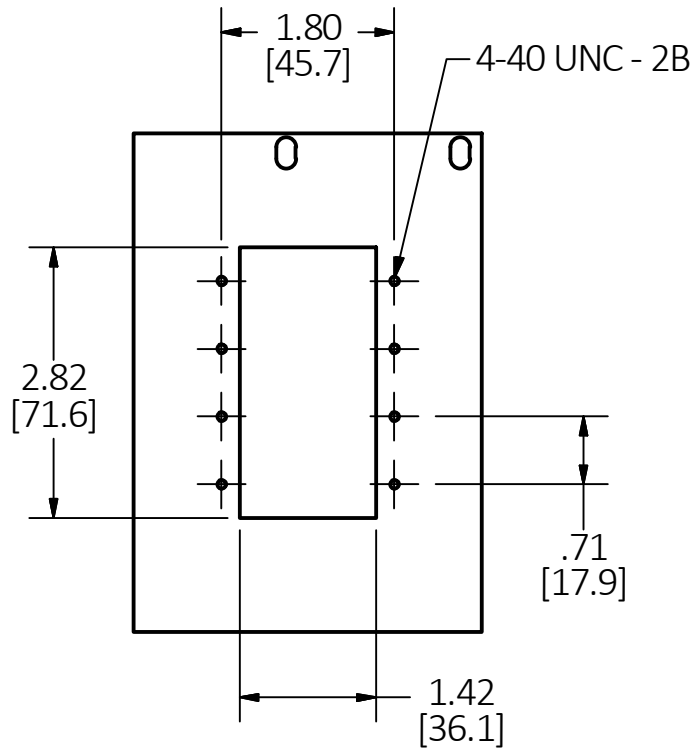
5



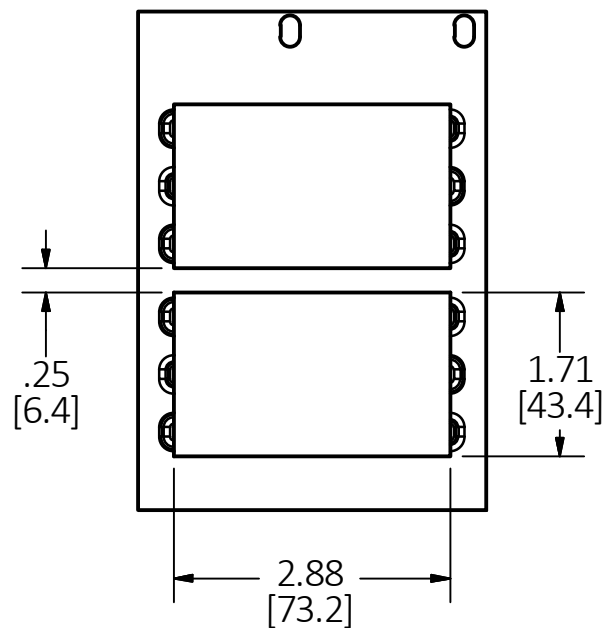
DIMENSIONS SHOWN ABOVE ARE TYPICAL FOR ALL 2-GANG PLATES ON THIS SHEET



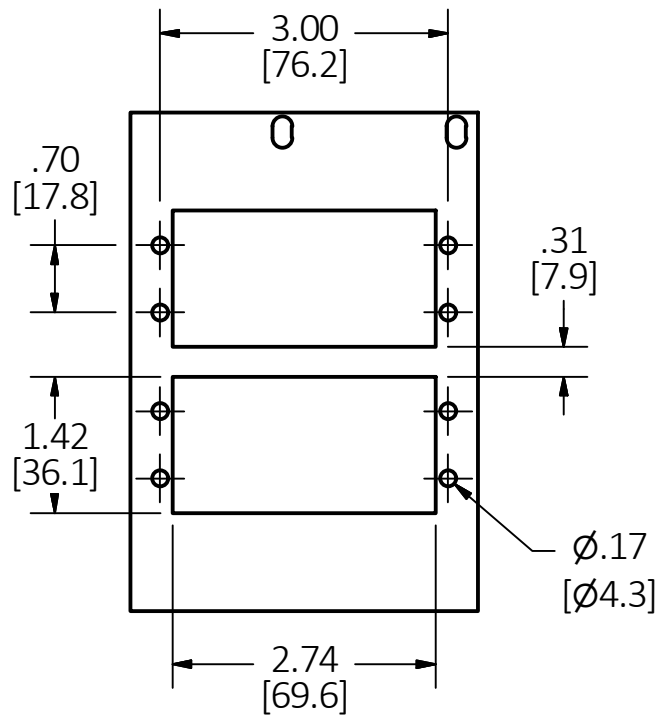
CATALOG NO.	DESCRIPTION
FB10MP2A	2 GANG DECORATOR



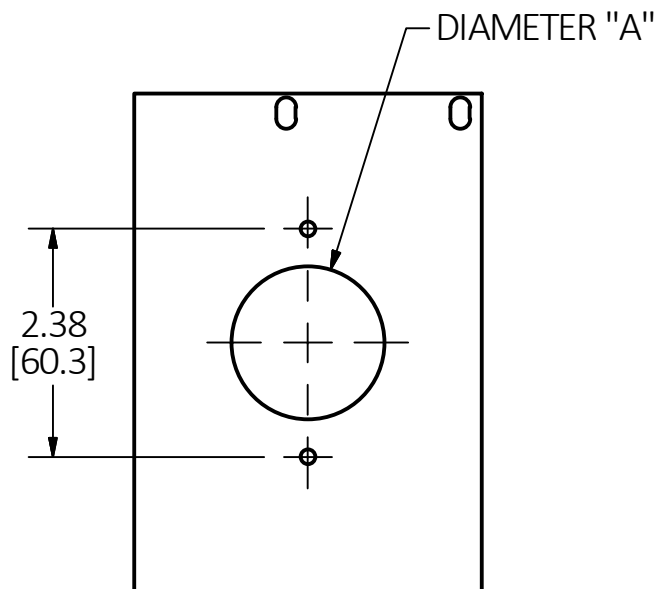
CATALOG NO.	DESCRIPTION
FB10MPMAAP	4 UNIT EXTRON MAAP



CATALOG NO.	DESCRIPTION
FB10MP2B	6 UNIT ISTATION



CATALOG NO.	DESCRIPTION
FB10MPAAP	4 UNIT EXTRON AAP



CATALOG NO.	DESCRIPTION	DIAMETER "A"
FB10TLA	TWISTLOCK	Ø1.60 [40.5]
FB10TLX	SIMPLEX OR TL	Ø1.41 [35.7]

LIST OF PARTS

DESCRIPTION	MATERIAL	FINISH
FACE PLATE	CRS	PRE-GALVANIZED

NOTES:  
 1. ALL DIMENSIONS ARE IN INCHES AND [MILLIMETERS].  
 2. PRODUCT IS cULus LISTED.  
 3. MOUNTING HARDWARE INCLUDED.

5	SHEET 2 ADDED CATALOG FB10MP2E WITH VIEW. PER DCN 24111 SPN	DL	6/4/18
4	REDRAWN & REVISED PER DCN 23447	SBW	2/5/18
REV	DESCRIPTION	APP	DATE

THE DESIGN AND DIMENSIONS OF THE PRODUCT SHOWN ON THIS DRAWING ARE SUBJECT TO CHANGE WITHOUT NOTICE. DIMENSIONS ARE IN INCHES [mm].

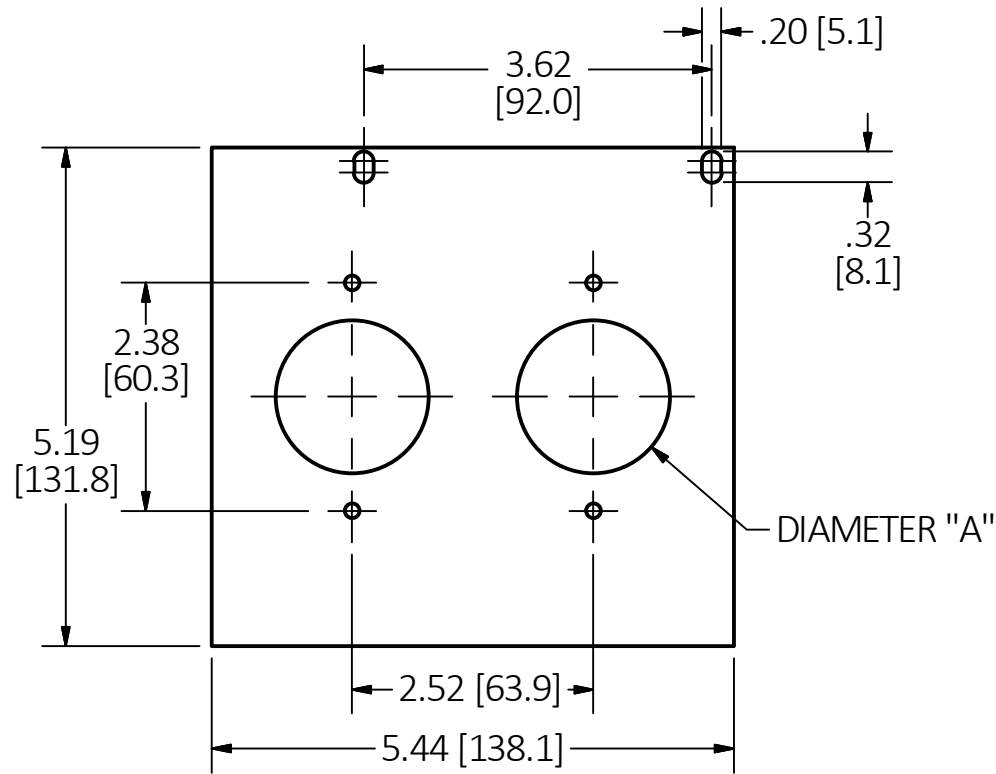
TITLE  
MOUNTING PLATE, RECESSED 10 GANG FLOOR BOX

**HUBBELL** WIRING DEVICE-KELLEMS HUBBELL INCORPORATED SHELTON, CT

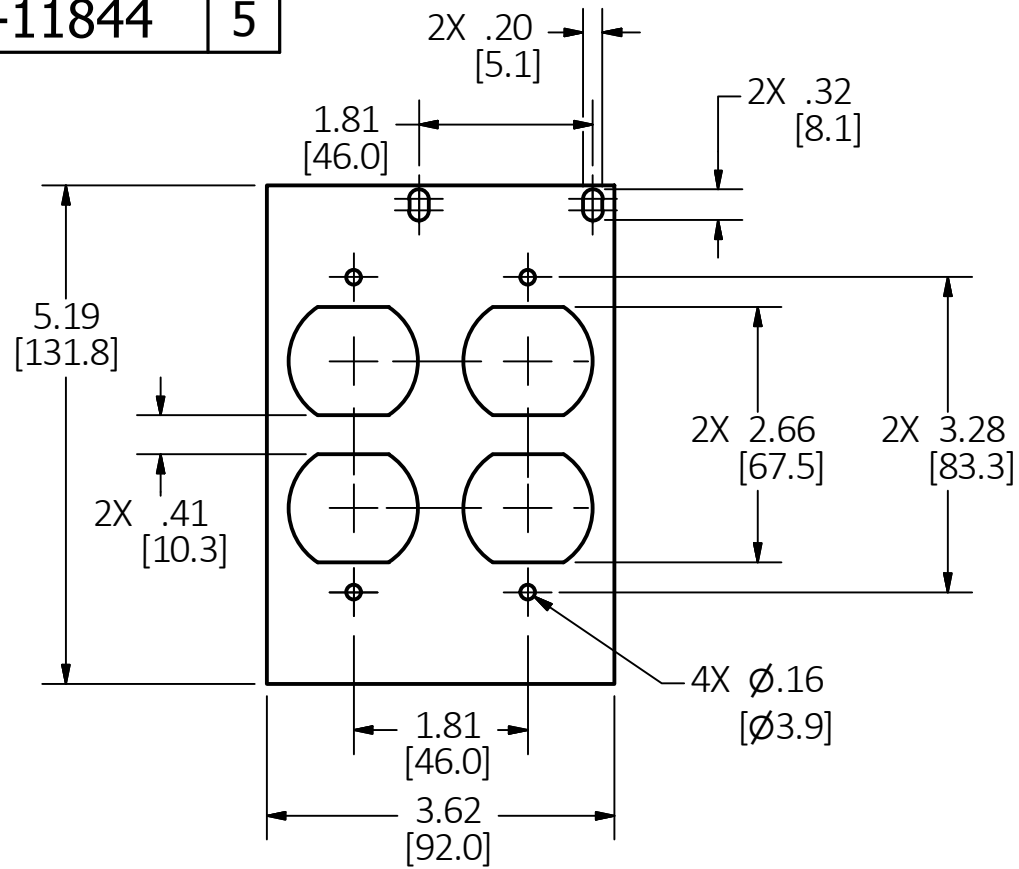
TOLERANCES UNLESS OTHERWISE SPECIFIED .XX = ±.01 .XXX = ±.005 ANGLE TOL. ±2'	DR. BY SBW	SCALE 1/2
	CHK. BY	DATE 2/2/18

M-11844

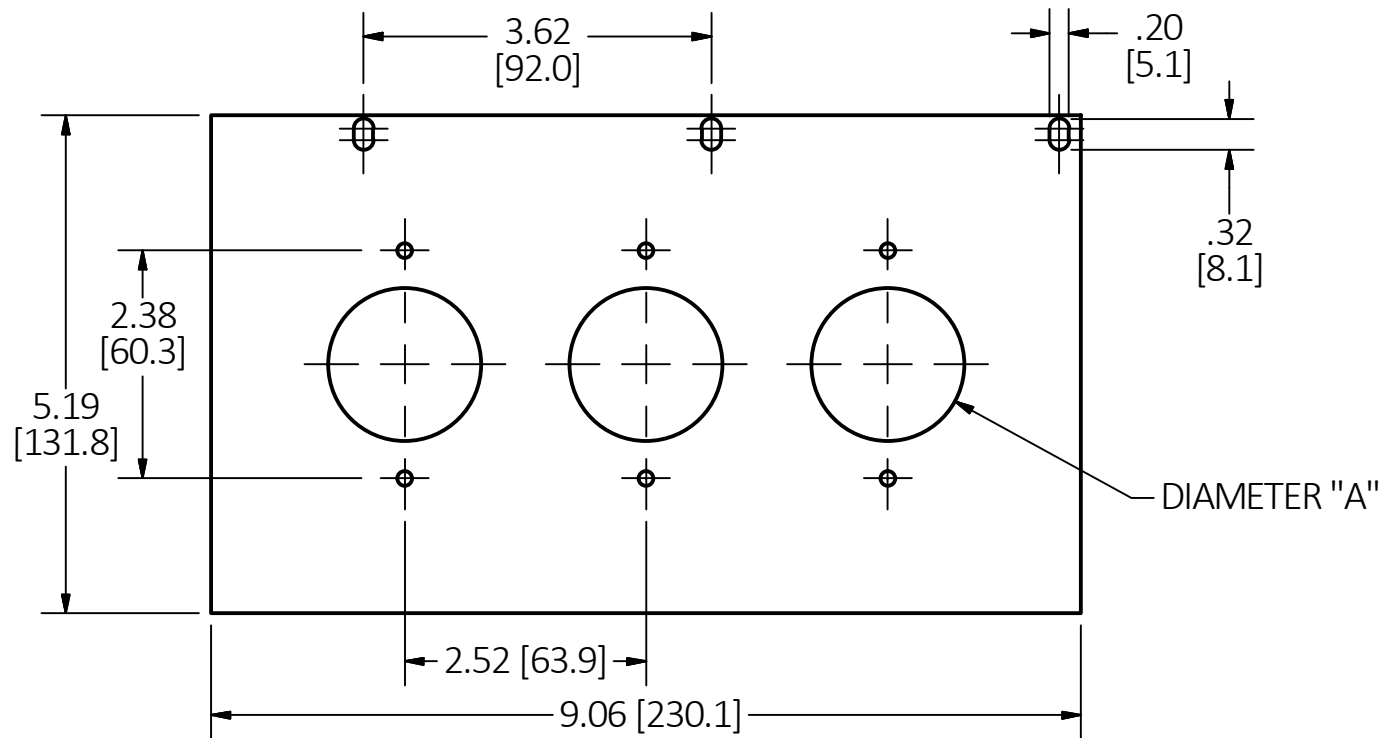
5



CATALOG NO.	DESCRIPTION	DIAMETER "A"
FB10TLB	2X TWISTLOCK	Ø1.60 [40.5]
FB10TLY	2X SIMPLEX OR TL	Ø1.41 [35.7]



CATALOG NO.	DESCRIPTION
FB10MP2E	2-GANG DUPLEX



CATALOG NO.	DESCRIPTION	DIAMETER "A"
FB10TLC	3X TWISTLOCK	Ø1.60 [40.5]
FB10TLZ	3X SIMPLEX OR TL	Ø1.41 [35.7]

LIST OF PARTS

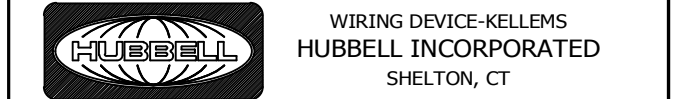
DESCRIPTION	MATERIAL	FINISH
FACE PLATE	CRS	PRE-GALVANIZED

- NOTES:
- ALL DIMENSIONS ARE IN INCHES AND [MILLIMETERS].
  - PRODUCT IS cULus LISTED.
  - MOUNTING HARDWARE INCLUDED.

REV	DESCRIPTION	APP	DATE
5	SHEET 2 ADDED CATALOG FB10MP2E WITH VIEW. PER DCN 24111 SPN	DL	6/4/18
4	REDRAWN & REVISED PER DCN 23447	SBW	2/5/18

THE DESIGN AND DIMENSIONS OF THE PRODUCT SHOWN ON THIS DRAWING ARE SUBJECT TO CHANGE WITHOUT NOTICE. DIMENSIONS ARE IN INCHES [mm].

TITLE  
MOUNTING PLATE, RECESSED 10 GANG FLOOR BOX



TOLERANCES UNLESS OTHERWISE SPECIFIED .XX = ± .01 .XXX = ± .005 ANGLE TOL. ±2'	DR. BY SBW CHK. BY	SCALE 1/2 DATE 2/2/18
---	-----------------------	--------------------------

DIMENSION SHEET FOR CAT. NO. SEE TABLE B M-11844 5