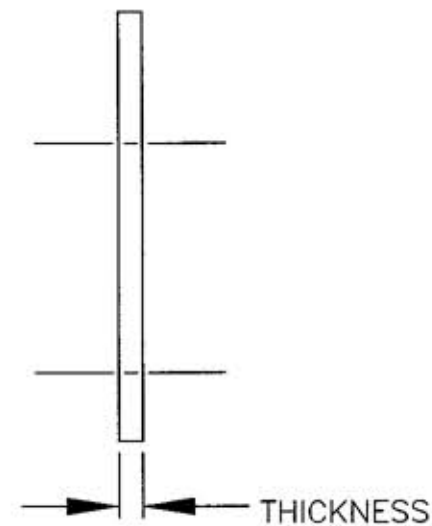
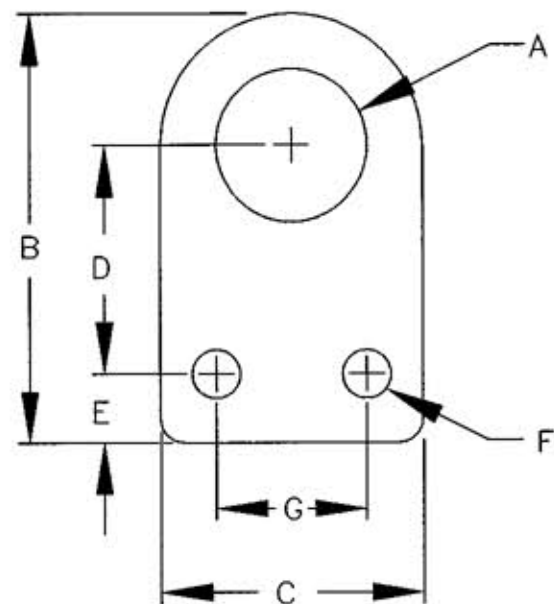


# M-8789 1

HUBBELL MODEL	A	B	C	D	E	F	G	THICKNESS	WEIGHT (OZ.)
FB12	12.1 (0.48)	49.6 (1.95)	31.8 (1.25)	21.8 (0.86)	11.9 (.47)	5.54 (0.22)	19.1 (0.75)	3.02 (0.12)	1.2
FB18	18.2 (0.72)	57.6 (2.27)	34.9 (1.38)	34.6 (1.36)	5.56 (0.22)	6.05 (0.24)	25.4 (1.00)		1.3
FB22	22.1 (0.87)					6.48 (0.26)	22.2 (.88)		1.3
FB30	30.1 (1.19)	86.9 (3.42)	50.8 (2.00)	52.0 (2.05)	9.40 (0.37)	7.94 (0.31)	31.8 (1.25)		2.8
FB47	47.2 (1.86)	102.8 (4.05)	63.5 (2.50)	56.8 (2.24)	14.3 (0.56)	9.91 (0.39)	38.1 (1.50)		3.8



LIST OF PARTS		
DESCRIPTION	MATERIAL	FINISH
FLAT BRACKET	STAINLESS STEEL	

1	5/3/02 "X" REMOVED; LAST "X" REVISION WAS X-0. RELEASED FOR PRODUCTION PER DCN #9320. GDR MJL	APP	DATE
SYM	REVISIONS	APP	DATE

THE DESIGN AND DIMENSIONS OF THE PRODUCT SHOWN ON THIS DRAWING ARE SUBJECT TO CHANGE WITHOUT NOTICE

TITLE  
FLAT BRACKETS

TOLERANCES UNLESS OTHERWISE SPECIFIED	WIRING DEVICE-KELLEMS HUBBELL INCORPORATED BRIDGEPORT, CT	
FRACTIONS ±1/64	DR. BY GDR	APP. BY <i>MJL</i>
DECIMALS ±.005	TR. BY	SCALE NONE
ANGLES ±2°	CHK'D BY	DATE 5/3/02

UNLESS OTHERWISE SPECIFIED DIMENSIONS ARE IN mm (INCHES)

DIMENSION SHEET FOR CAT. NO. M-8789  
 SEE CHART  
 REPAIRABLE  NON-REPAIRABLE