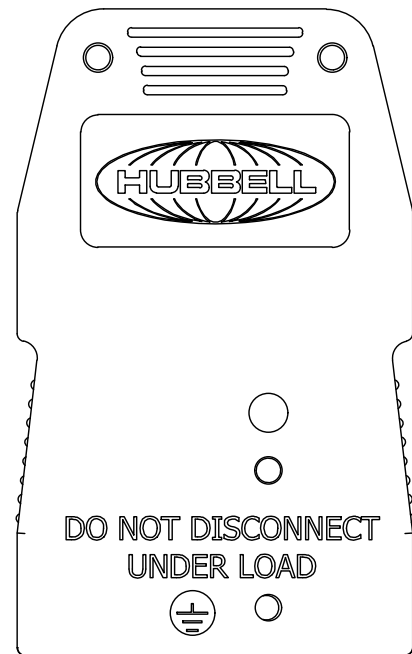
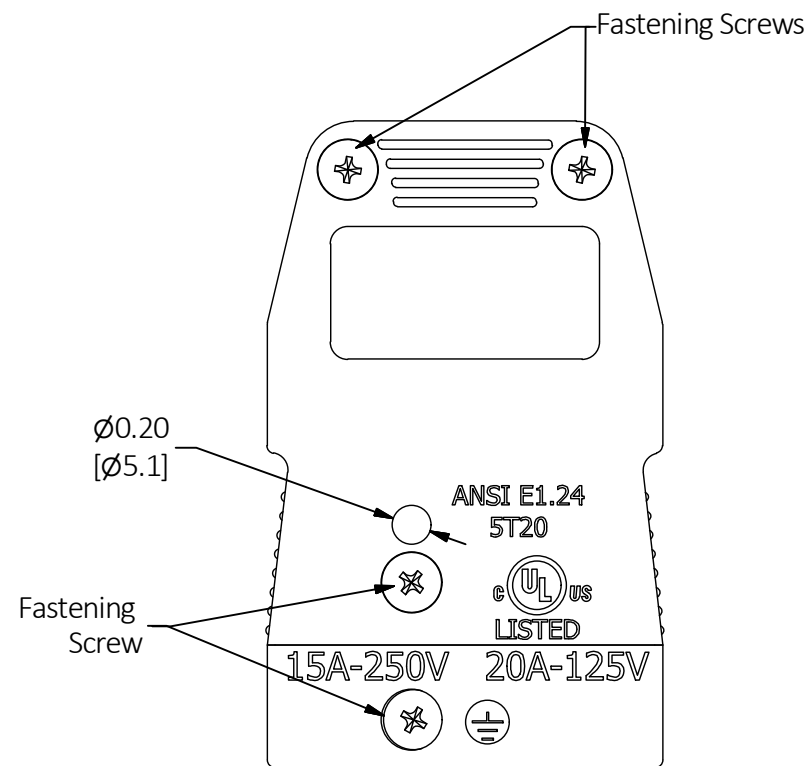


M-13661

1



SCALE 1 : 1

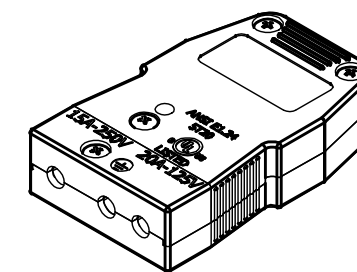


HUBBELL CAT. NO.	COLOR
HBL20SPF	BLACK
HBL20SPFW	WHITE
HBL20SPFB	BLUE
HBL20SPFRED	RED
HBL20SPFY	YELLOW
HBL20SPFO	ORANGE
HBL20SPFC	CLEAR

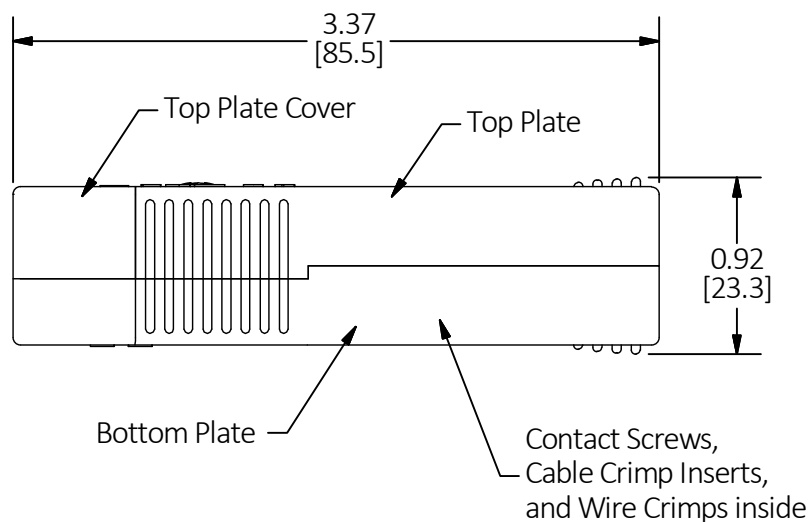
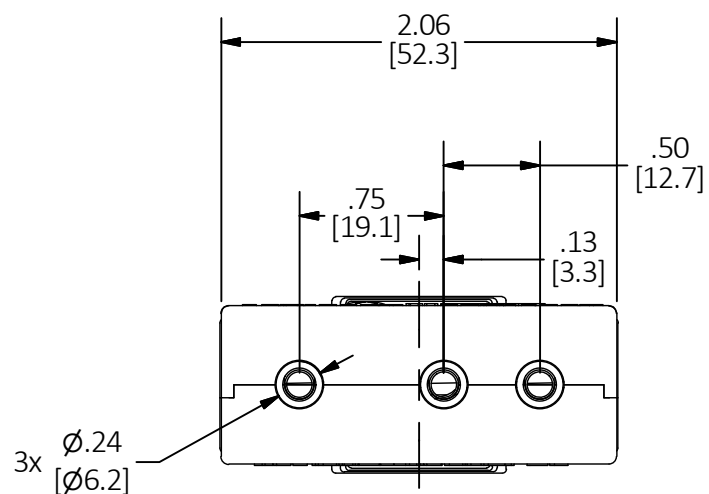
LIST OF PARTS		
DESCRIPTION	MATERIAL	FINISH
Bottom Plate	Thermoplastic	See Table
Top Plate	Thermoplastic	See Table
Top Plate Cover	Thermoplastic	See Table
Female Contact	Brass	Amber
Contact Screw	Brass	Amber
Fastening Screw	Steel	Silver
Cable Crimp Insert	Thermoplastic	Black
Wire Crimp	Aluminum	Silver

DIMENSION SHEET FOR CAT. NO. SEE TABLE

Back View



CATALOG NO: HBL20SPF (SCALE: 1/2)



NOTES UNLESS OTHERWISE SPECIFIED:

- Dimensions are in inches [mm].
- Rated 20A MAX at 125V and/or 15A MAX at 250V. Can be used in AC and DC applications.
- Use with HBL20SPMR, HBL20SPMRW, HBL20SPMRB, HBL20SPMRRED, HBL20SPMRY, HBL20SPMRO, HBL20SPMRC or HBL20SPM, HBL20SPMW, HBL20SPMB, HBL20SPMRED, HBL20SPMY, HBL20SPMO, HBL20SPMC.
- Color variations are only used for distinction and do not signify any difference in performance or voltage/current rating.
- Use with 12/3 type SO through 16/3 Type SJO cable .
- Insert bare wire into female contact and torque contact screws to 12 in-lbs.
- Tighten fastening screws to 12 in-lbs.

1	09-25-17 NEW RELEASE PER DCN23355 CAC		
REV	DESCRIPTION	APP	DATE

THE DESIGN AND DIMENSIONS OF THE PRODUCT SHOWN ON THIS DRAWING ARE SUBJECT TO CHANGE WITHOUT NOTICE. DIMENSIONS ARE IN INCHES [mm].

TITLE
20A In-Line Female Stage Pin



WIRING DEVICE-KELLEMS
HUBBELL INCORPORATED
SHELTON, CT

TOLERANCES UNLESS OTHERWISE SPECIFIED .XX = ±.01 .XXX = ±.005 ANGLE TOL. ±2'	DR. BY A Di Vita	SCALE 1 : 1
	CHK. BY	DATE 6/12/2017