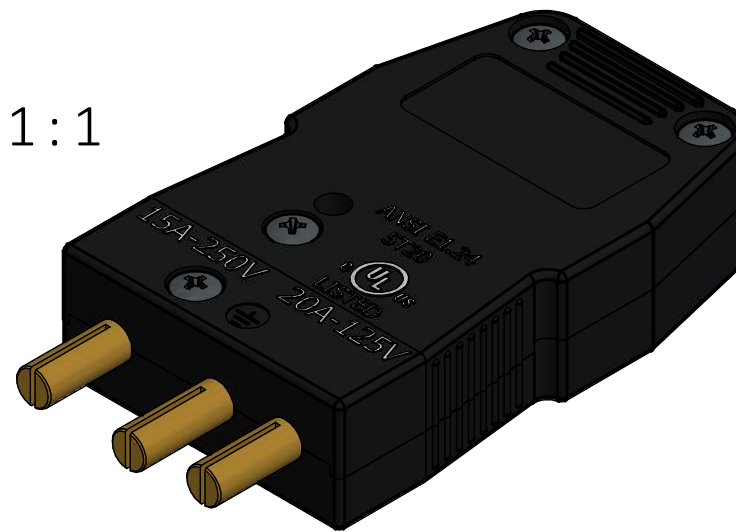
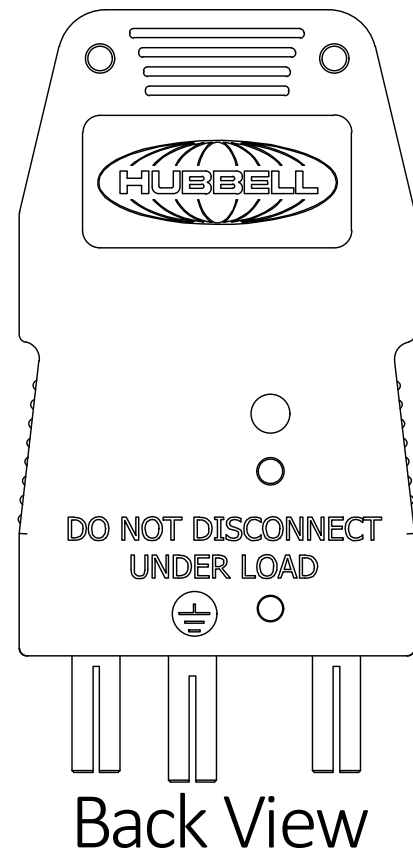
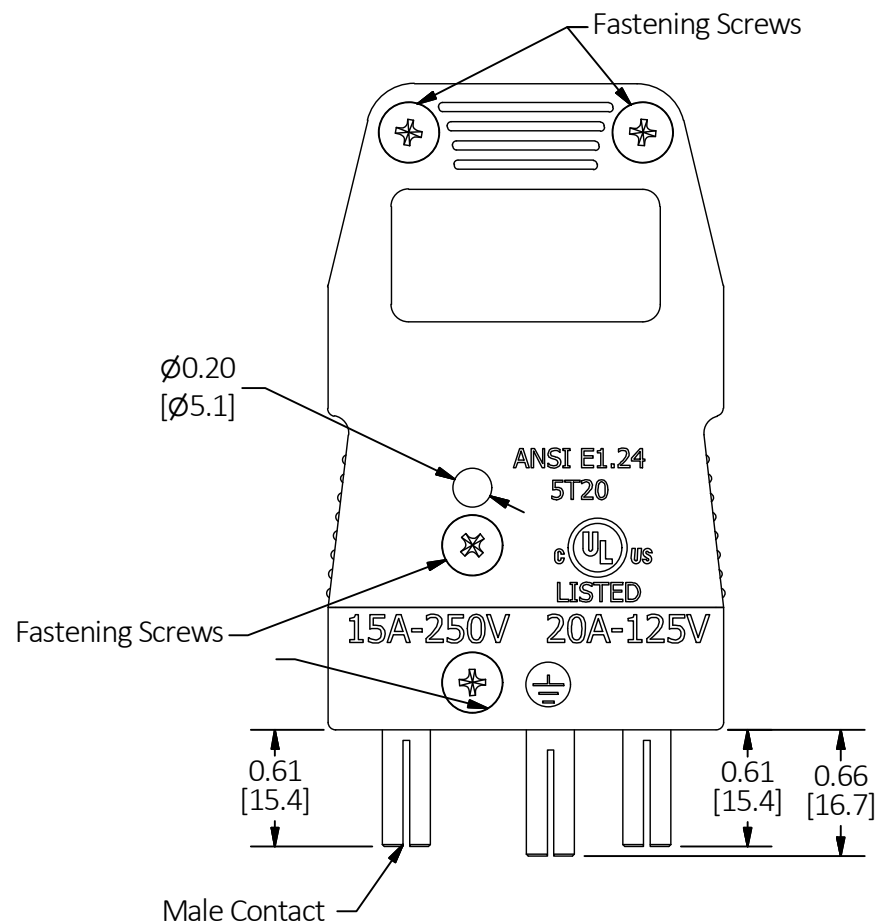


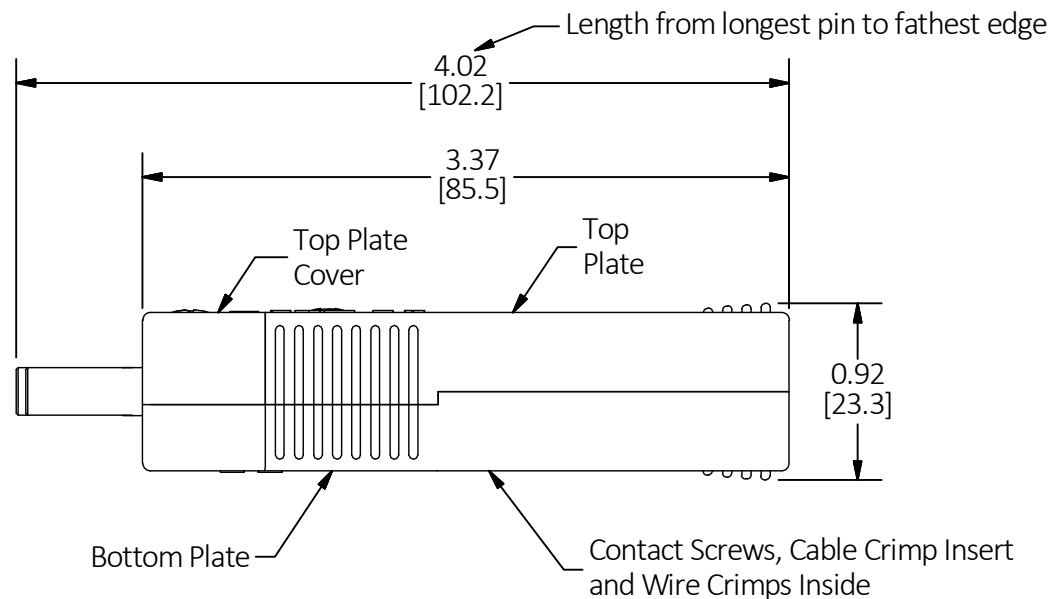
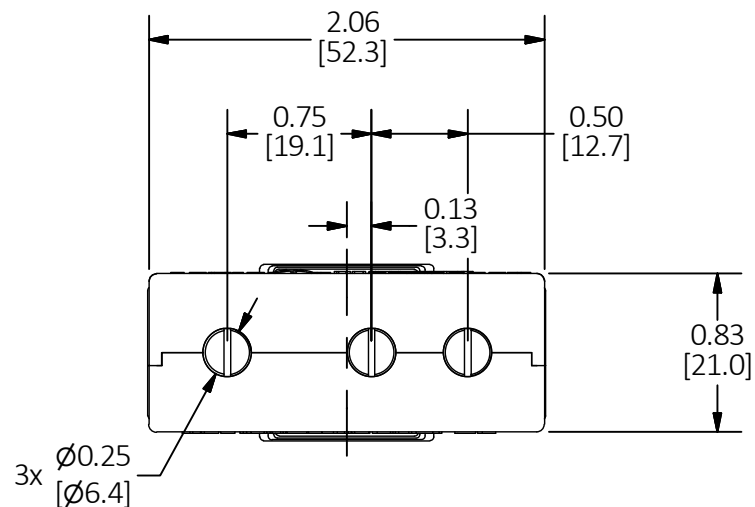
M-13660

1

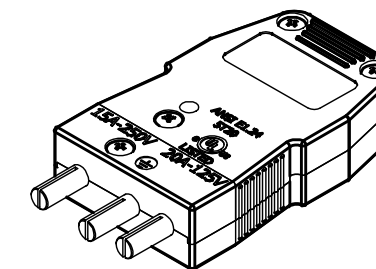
SCALE 1 : 1



HUBBELL CAT. NO.	COLOR
HBL20SPM	BLACK
HBL20SPMW	WHITE
HBL20SPMB	BLUE
HBL20SPMRED	RED
HBL20SPMY	YELLOW
HBL20SPMO	ORANGE
HBL20SPMC	CLEAR



LIST OF PARTS		
DESCRIPTION	MATERIAL	FINISH
Bottom Plate	Thermoplastic	See Table
Top Plate	Thermoplastic	See Table
Top Plate Cover	Thermoplastic	See Table
Male Contact	Brass	Amber
Contact Screw	Brass	Amber
Fastening Screw	Steel	Silver
Cable Crimp Insert	Thermoplastic	Black
Wire Crimp	Aluminum	Silver



CATALOG NO: HBL20SPM
(SCALE: 1/2)


NOTES: UNLESS OTHERWISE SPECIFIED

1. Dimensions are in inches [mm].
2. Rated 20A MAX at 125V and/or 15A MAX at 250V. Can be used in AC and DC applications.
3. Use with cat. nos. HBL20SPFR, HBL20SPFRW, HBL20SPFRB, HBL20SPFRRED, HBL20SPFRY, HBL20SPFRO, HBL20SPFRC or HBL20SPF, HBL20SPFW, HBL20SPFB, HBL20SPFRED, HBL20SPFY, HBL20SPFO, HBL20SPFC.
4. Color variations are only used for distinction and do not signify any difference in performance or voltage/current rating.
5. Use with 12/3 type SO through 16/3 Type SJO cable .
6. Insert bare wire into male contact and torque contact screws to 12 in-lbs.
7. Tighten fastening screws to 12 in-lbs.

REV	DESCRIPTION	APP	DATE
1	09-25-17 NEW RELEASE PER DCN23355 CAC		

THE DESIGN AND DIMENSIONS OF THE PRODUCT SHOWN ON THIS DRAWING ARE SUBJECT TO CHANGE WITHOUT NOTICE. DIMENSIONS ARE IN INCHES [mm].

TITLE
20A In-Line Male Stage Pin

 WIRING DEVICE-KELLEMS
HUBBELL INCORPORATED
SHELTON, CT

TOLERANCES UNLESS OTHERWISE SPECIFIED .XX = ± .01 .XXX = ± .005 ANGLE TOL. ±2°	DR. BY A Di Vita	SCALE 1 : 1
CHK. BY	DATE 6/12/2017	