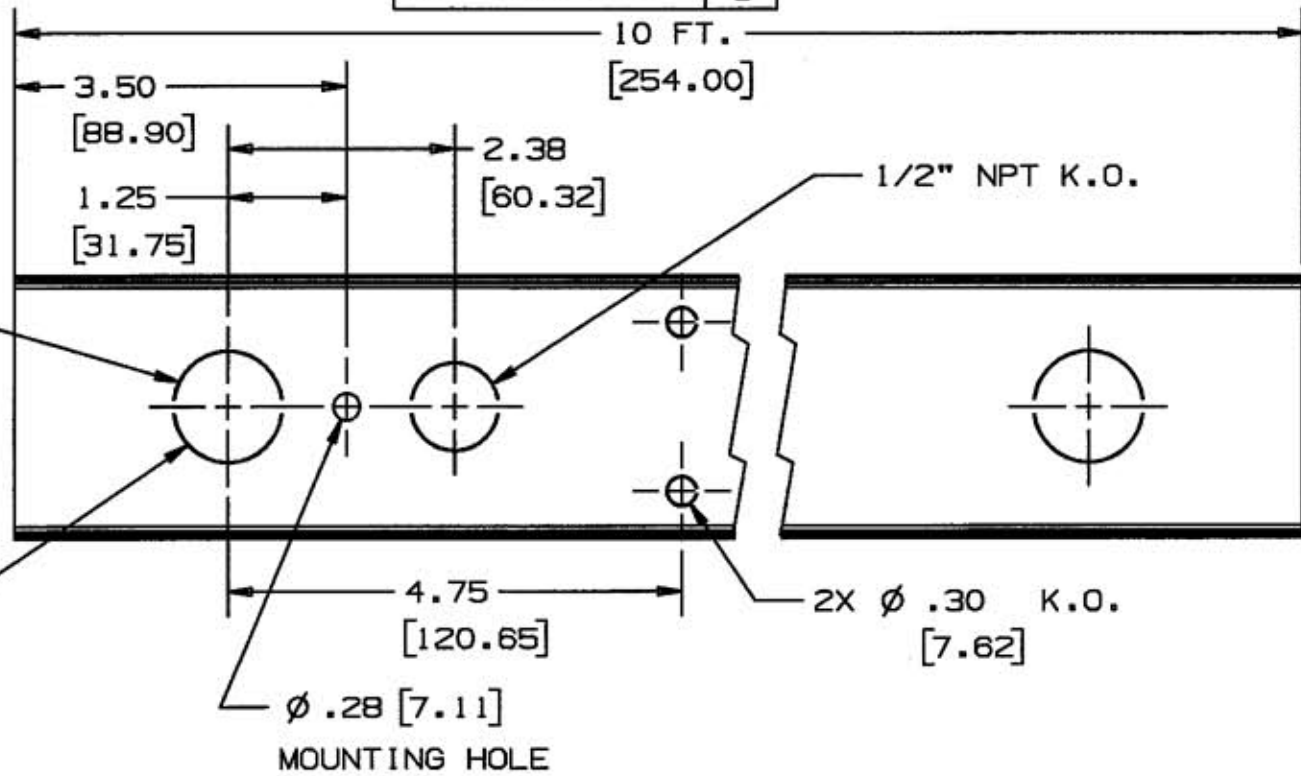
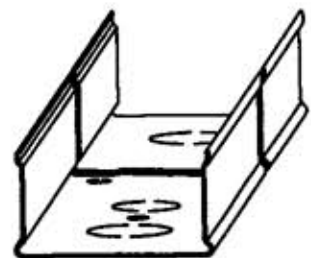


M-10389 1



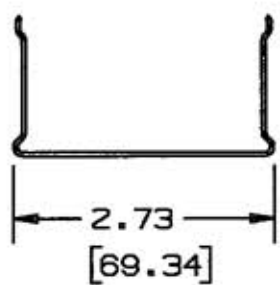
SEQUENCE OF HOLES AND K.O.
REPEATED EVERY 4.88 [124.0]

3/4" NPT K.O.

1/2" NPT K.O.

2X ϕ .30 K.O.
[7.62]

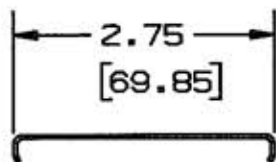
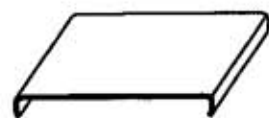
ϕ .28 [7.11]
MOUNTING HOLE



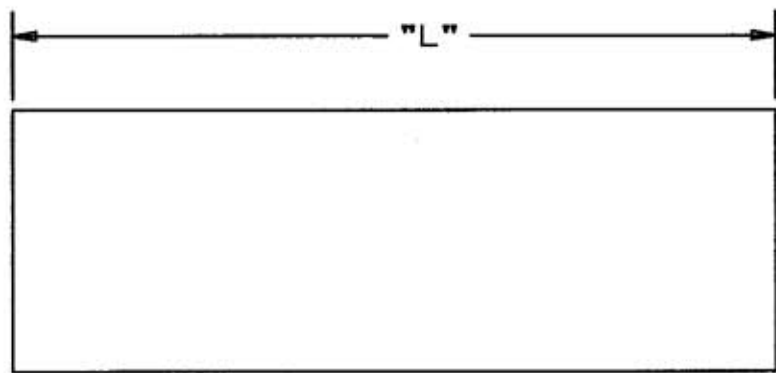
1.47
[37.34]

2.73
[69.34]

RACEWAY BASE	
CAT. NO.	COLOR
HBL3000BIV	IVORY
HBL3000BGY	GRAY



2.75
[69.85]



RACEWAY COVER		
CAT. NO.	COLOR	"L"
HBL3000CEIV	IVORY	5 FT.
HBL3000CEGY	GRAY	
HBL3000C075IV	IVORY	7.5 IN.
HBL3000C075GY	GRAY	
HBL3000C195IV	IVORY	19.5 IN.
HBL3000C195GY	GRAY	

.30
[7.62]

NOTE: ALL DIMENSIONS IN INCHES AND [MM]

LIST OF PARTS

DESCRIPTION	MATERIAL	FINISH
BASE	STEEL	PAINTED
COVER	STEEL	PAINTED

DIMENSION SHEET FOR CAT. NO. SEE TABLE

REPAIRABLE NON-REPAIRABLE

B

1	RELEASED PER DCN13553	<i>Dr</i>	11/14/06
SYM	REVISIONS	APP	DATE

THE DESIGN AND DIMENSIONS OF THE PRODUCT SHOWN ON THIS DRAWING ARE SUBJECT TO CHANGE WITHOUT NOTICE

TITLE RACEWAY COVERS & BASES HBL3000 SERIES

TOLERANCES UNLESS OTHERWISE SPECIFIED FRACTIONS \pm 1/64 DECIMALS \pm .005 ANGLES \pm 2°	WIRING DEVICE-KELLEMS HUBBELL INCORPORATED BRIDGEPORT, CT	
	DR. BY SRE	APP. BY <i>Dr</i>
	TR. BY	SCALE 1:1
	CHK'D BY <i>Dr</i>	DATE 11/14/06

M-10389

1