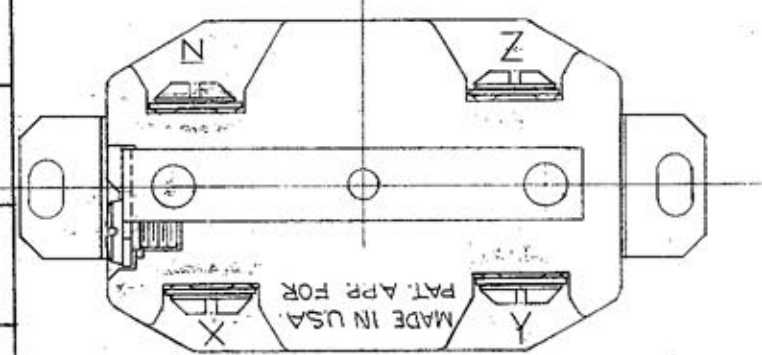
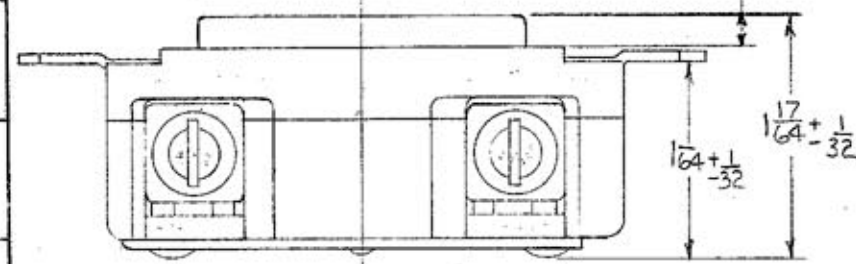
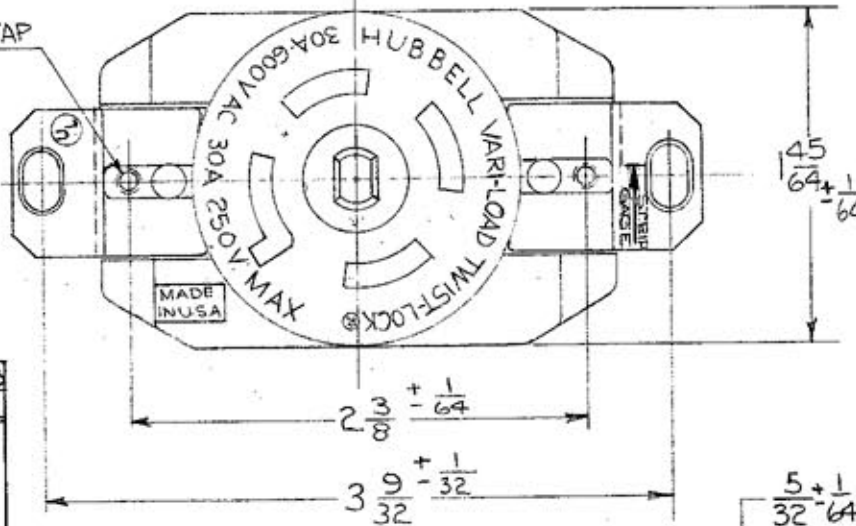
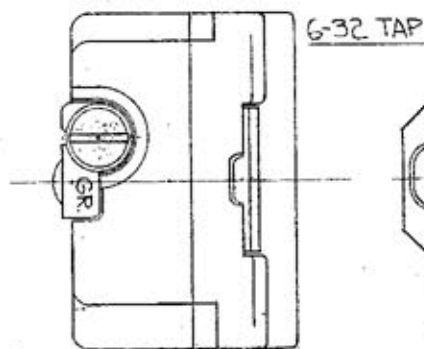


DIMENSION SHEET FOR CAT. NO. 45105 (BL-15295) - 45205 - 45305 - 45405
45505 - 45605 - 45705 - 45805

M-3812

LIST OF PARTS

DESCRIPTION	MATERIAL	FINISH
BASE	BAKELITE	
BODY	MELAMINE	
END PLATE	.050 C.R. STL.	ZINC PL.
TERMINAL	.060 BRASS	
WIRE CLAMP	.025 SPR. STL.	BRASS PL.
CONT. SPR.	.040 BRONZE	
RIVET	BRASS	ZINC PL.
GR CONT. SPRING	.031 BRONZE	
SUPPORTING STRAP	.050 BRASS	
BIND. HD SCR. (GR) #8-32 THD.	BRASS - 1/4 LG.	
SPECIAL BIND SCR.	BRASS 5/16 LG.	
RIVET	BRASS	
INSERT	NYLON	



OTHER CENTER CONFIGURATIONS

CONFIGURATION	CAT NO
1	45105 (BL-15295)
2	45205
3	45305
4	45405
5	45505
6	45605
7	45705
8	45805

STRIP GAGE MKG. ADDED		2-5-63
REVISIONS	DATE	

<p>TOLERANCES UNLESS OTHERWISE SPECIFIED</p> <p>FRACTIONS ± 1/64</p> <p>DECIMALS ± .005</p> <p>ANGLES ± 2°</p>	<p>HARVEY HUBBELL, INC.</p> <p>BRIDGEPORT, CONN.</p>	
	DR. BY V. WIPINSKI	APP. BY
	TR. BY	SCALE FULL
	CHK'D. BY ETC	DATE 10-19-61