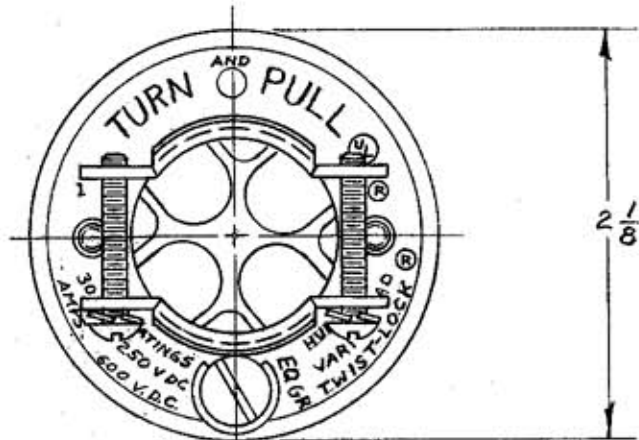
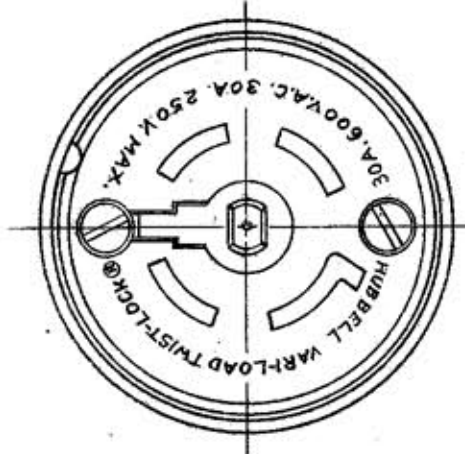
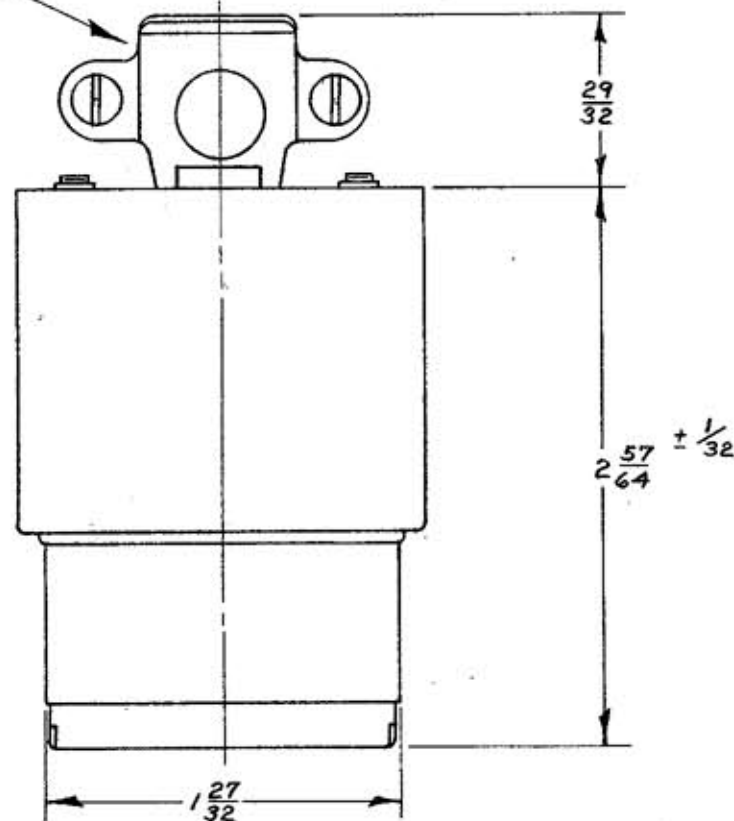


M-3992 / 1



CORD CLAMPS TAKE CORDS FROM .562 TO 1.000 DIA.



CENTER CONFIGURATIONS		
CONFIGURATION		CAT. NO.
1		45135
2		45235
3		45335
4		45435
5		45535
6		45635
7		45735
8		45835

LIST OF PARTS		
DESCRIPTION	MATERIAL	FINISH
COVER	NYLON	BLACK
RETAINING SHELL	NYLON	BLACK
TOP PLATE	.040 STEEL	ZINC PL.
CUPPED WASHER	.031 BRASS	
BINDING SCREWS	BRASS	
BODY	BAKELITE	BLACK
INSERT	.125 BRASS	WHITE
4- TERMINALS	.031 BRASS	
4- WIRE CLAMPS	.062 STEEL	ZINC PL.
INSIDE CONT. SPRING	.040 BRONZE	
OUTSIDE CONT. SPRING	.040 BRONZE	
GR. SPRING	.012 BRONZE	
CORD CLAMP	.062 STEEL	ZINC PL.
HOLDING SCREWS	BRASS	

SYM	REVISIONS	APP	DATE
1	INSERT WAS NYLON MJK		1-6-83

SUPERSEDES DRAWING M-3992 DATED 8-16-63

TITLE
 30-A 250-V.A.C. OR D.C. 30-A 600 V.A.C. MAX.
 5 WIRE TWIST-LOCK VARI-LOAD
 CONNECTOR BODY

TOLERANCES UNLESS OTHERWISE SPECIFIED
 FRACTIONS ± 1/64
 DECIMALS ± .005
 ANGLES ± 2°

HARVEY HUBBELL, INC.
 BRIDGEPORT, CONN.

DR. BY G.M. APP. BY J.C.
 TR. BY SCALE FULL
 CHK'D. BY DATE 12-13-68

CODE 74545

DIMENSION SHEET FOR CAT. NO. 45135, 45235, 45335, 45435, 45535, 45635, 45735, 45835
 REPAIRABLE NON-REPAIRABLE
B
M-3992
1