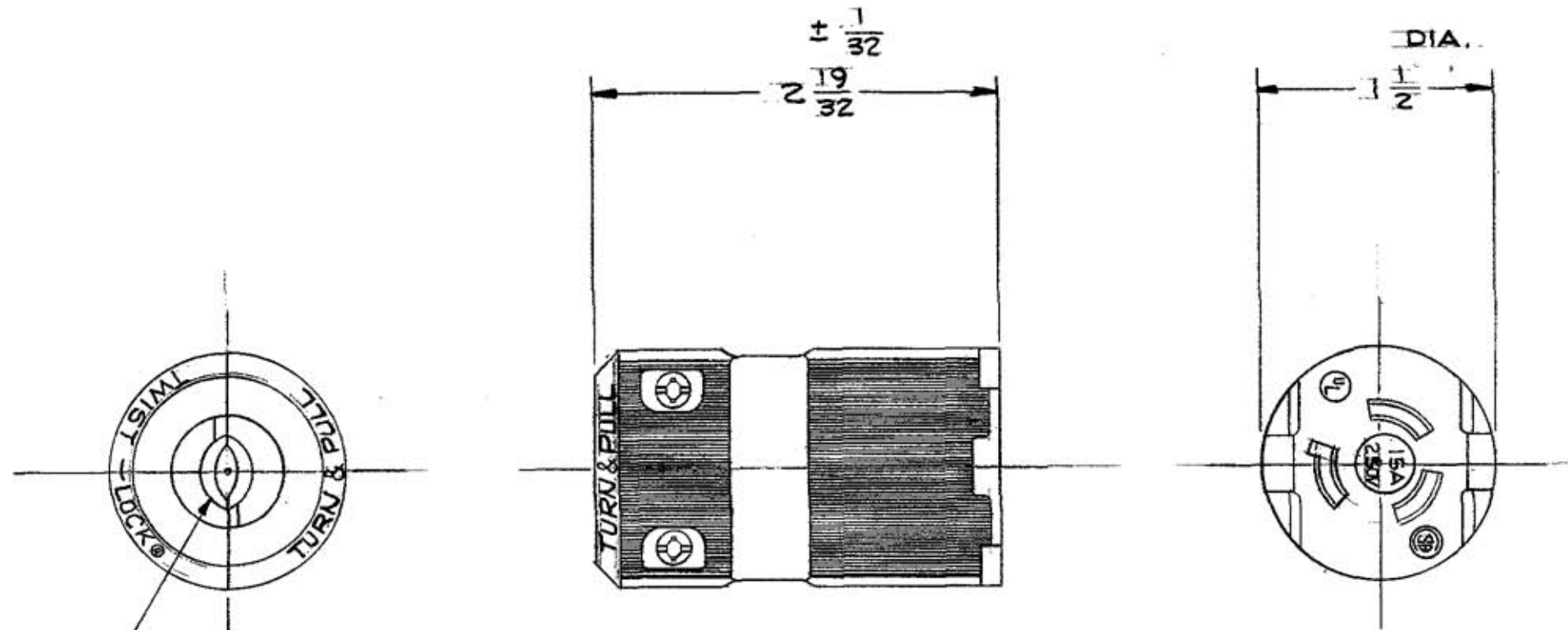


M-6195 2



CORD CLAMPS WITH INSERTS TAKE
CORDS FROM 19/64 TO 29/64 DIA. &
WITHOUT INSERTS FROM 29/64 TO 11/16 DIA.

LIST OF PARTS

DESCRIPTION	MATERIAL	FINISH
HOUSING	NYLON	
INSERT	(PPD) NYLON	
CONTACT BLADES	BRASS	
WIRE CLAMP NUT	C.R. STEEL	NICKEL
BINDING SCREW	STEEL	COPPER
GR. BINDING SCREW	STEEL	GREEN
CORD CLAMP SCREW	STEEL	ZINC.

DIMENSION SHEET FOR CAT. NO. 4579-VY, H&L 4579V15K
 REPAIRABLE NON-REPAIRABLE

SYM	REVISIONS	APP	DATE
2	REVISED PICTURE OF SCREW TO TRI-DRIVE DCN 7978 RCM	DB	11/21/00
1	ADDED (1) CAT. NO.; REMOVED "YELLOW" FROM HOUSING FINISH; INSERT MATL WAS BLACK NYLON PER DCN # 4649. JAC	CAC	1-20-97

TITLE
15A. 250V 3 WIRE GROUNDING
TWIST-LOCK VALISE CONNECTOR

TOLERANCES UNLESS OTHERWISE SPECIFIED
 FRACTIONS ± 1/64
 DECIMALS ± .005
 ANGLES ± 2°

HARVEY HUBBELL, INC.
 BRIDGEPORT, CONN.
 DR. BY P.M.L. APP. BY
 TR. BY
 SCALE FULL
 CHK'D. BY DATE 3-21-80