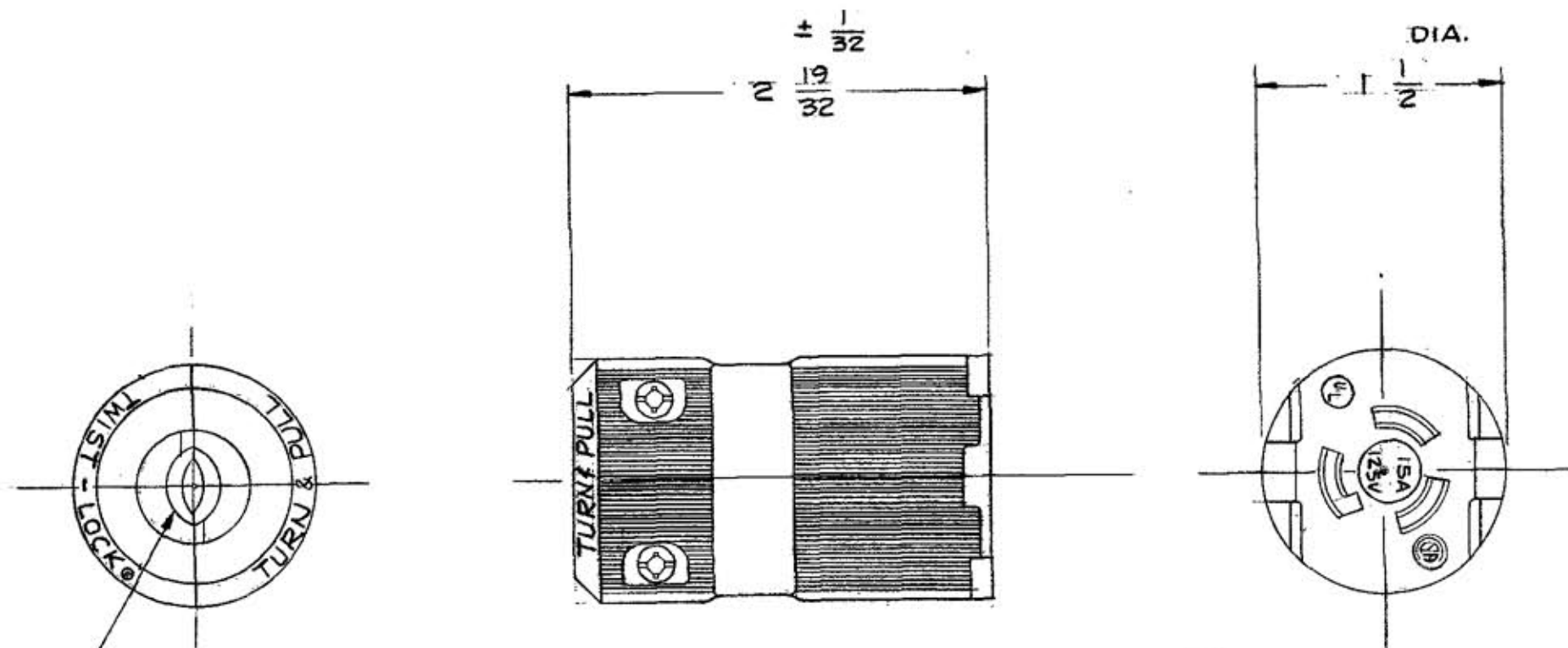


M-6192 2



CORD CLAMPS WITH INSERTS TAKE
 CORDS FROM 19/64 TO 29/64 DIA. ±
 WITHOUT INSERTS FROM 29/64 TO 1/16 DIA.

LIST OF PARTS

DESCRIPTION	MATERIAL	FINISH
HOUSING	NYLON	
INSERT	(PPO) NYLON	
CONTACT SPRINGS	BRASS	
GROUND CONTACTS	BRASS	
WIRE CLAMP NUT	C.R. STEEL	NICKEL
BINDING SCREW	STEEL	COPPER
WHITE BIND. SCREW	STEEL	NICKEL
GR. BINDING SCREW	STEEL	GREEN
CORD CLAMP SCREW	STEEL	ZINC.

DIMENSION SHEET FOR CAT. NO. 4729-VY, HBL4729VGR

REPAIRABLE NON-REPAIRABLE

SYM	REVISIONS	APP	DATE
2	REVISED SCREWS TO TRI-DRIVE PER DCN 7978 RCM	DB	11/21/00
1	ADDED (1) CAT. NO. REMOVED "YELLOW" FROM HOUSING FINISH; INSERT MAT'L WAS BLACK NYLON PER DCN 4689. JMC	CAC	1-20-97

B M-6192 2

TITLE
 15A. 125V. 3 WIRE GROUNDING
 TWIST-LOCK VALISE CONNECTOR

TOLERANCES UNLESS OTHERWISE SPECIFIED		HARVEY HUBBELL, INC.	
FRACTIONS ± 1/64		BRIDGEPORT, CONN.	
DECIMALS ± .005		DR. BY <u>PM</u>	APP. BY _____
ANGLES ± 2°		TR. BY _____	SCALE <u>FULL</u>
		CHK'D. BY _____	DATE <u>3-19-80</u>