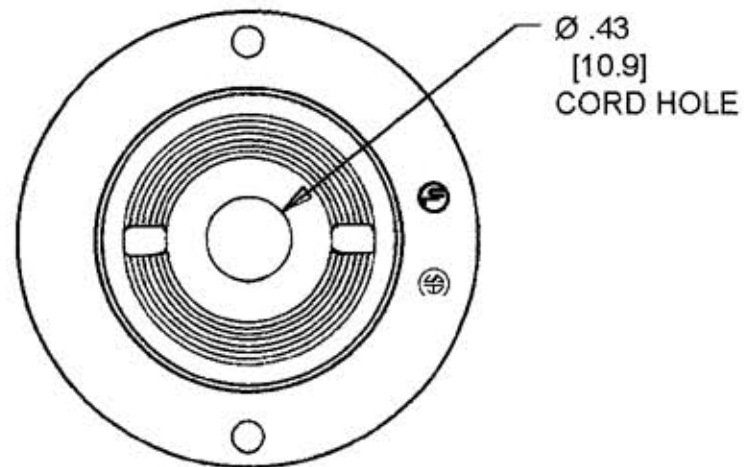
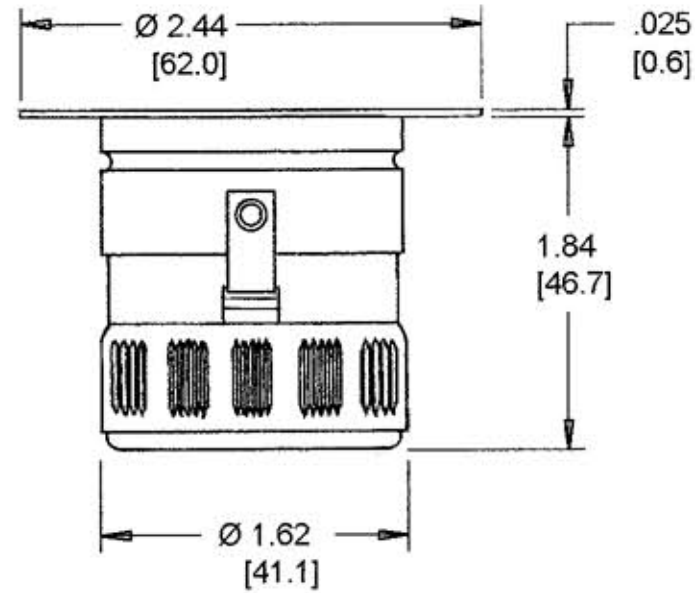
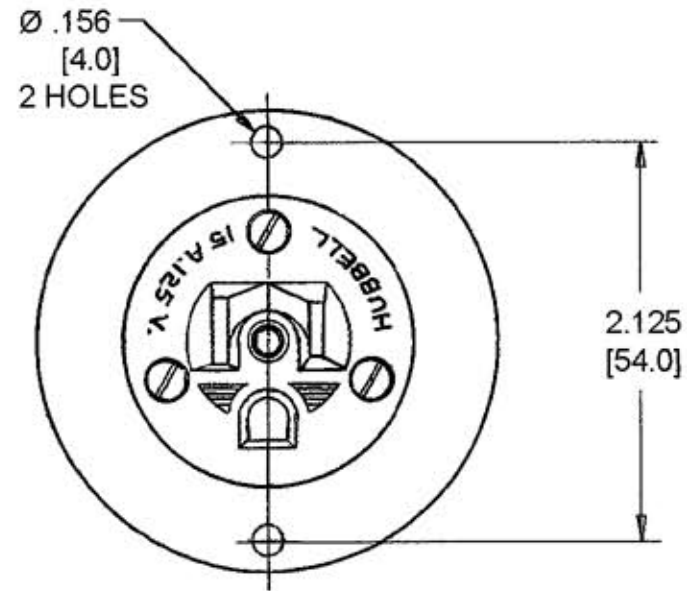
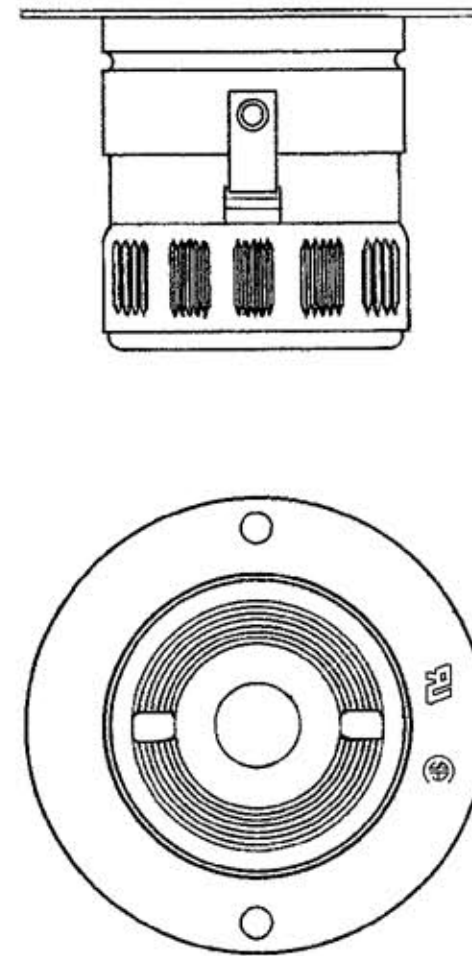


M-2749 4



- NOTES:
1. WIRE CAPACITY: #18/3 SJ TO #14/3 SJ TYPE CORD, SOLID OR STRANDED COPPER WIRE.
 2. SUPPLIED WITH (2) #6-32 X .375 MOUNTING SCREWS. [9.5]
 3. ALL DIMS. TO BE INCHES. [mm]

HBL5279RT ONLY
(SAME AS HBL5279 EXCEPT AS SHOWN)



LIST OF PARTS

DESCRIPTION	MATERIAL	FINISH
FLANGED CASING	BRASS	NICKEL PLATE
FACE	BAKELITE	
SCREW, FACE ASSY	STEEL	ZINC PLATE
BACK COVER	BAKELITE	
GROUND SHUNT	BRASS	
RIVET	BRASS	
SCREW, TERMINAL	BRASS	

SUPERSEDES DWG DATED 2/14/52

SYM	REVISIONS	APP	DATE
4	ADDED HBL5279RT PER DCN 13216 RCM	JPP	7/7/06
3	CAT NO. HBL5279 WAS HBL5278 PER DCN 12413 GDR	JPP	6/21/05
2	REDRAWN ON CUSTOMER FORMAT; WAS "A" SIZE, CONVERTED DIMS. TO DECIMAL & METRIC; ADDED NOTES 1 THRU 3 PER DCN 11902 RCM	JPP	2/5/05

THE DESIGN AND DIMENSIONS OF THE PRODUCT SHOWN ON THIS DRAWING ARE SUBJECT TO CHANGE WITHOUT NOTICE

TITLE
FLANGED RECEPTACLE
NEMA 5-15R

TOLERANCES UNLESS OTHERWISE SPECIFIED
FRACTIONS ±1/64
DECIMALS ±0.05
ANGLES ±2°

WIRING DEVICE--KELLEMS
HUBBELL INCORPORATED
BRIDGEPORT, CT
DR. BY SG APP. BY
TR. BY RCM SCALE 1:1
CHK'D BY AG DATE 2/5/05