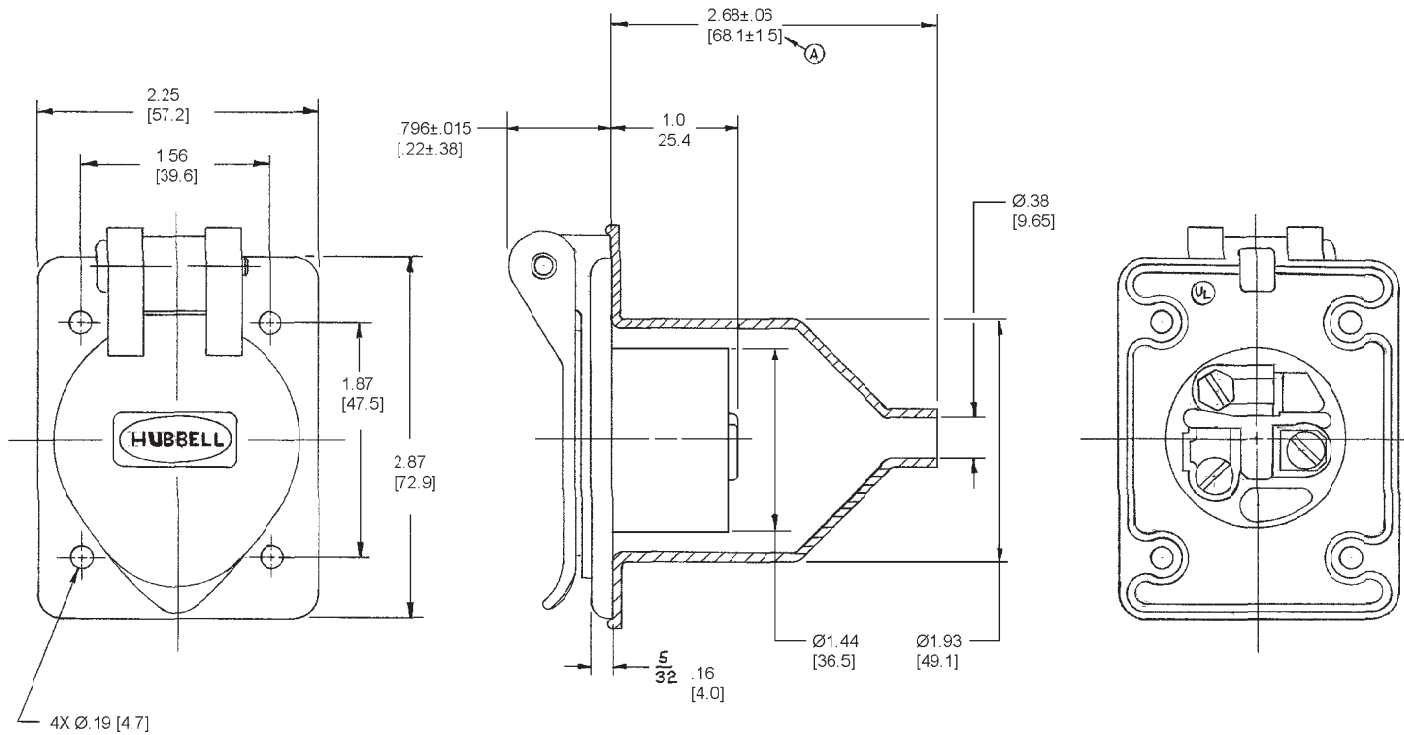


M-5800 4



NOTES: (UNLESS OTHERWISE SPECIFIED)

- 1) DIMENSION FORMAT IS: INCHES [mm]
- 2) DIMENSIONS SHOWN ON THIS DRAWING ARE NOMINAL VALUES FOR GENERAL USE ONLY. ACTUAL PART TOLERANCES MUST BE OBTAINED FROM HUBBELL ENGINEERING

CODE 74545

TITLE
 WEATHERPROOF FLANGED RECEPTACLE
 20A, 125V.
 NEMA #5-20R

LIST OF PARTS		
DESCRIPTION	MATERIAL	FINISH
COVER FLAP	NYLON	GRAY
BASE	NYLON	GRAY
GASKET	EPT	BLACK
HINGE PIN	BRASS	NICKEL PL.
SPRING (FLAP)	ST. STEEL	
CONT. SPR. BIND. PL.	BRASS	1-COPPER 1-WHITE
GR. SPR. BIND. PL.	BRASS	NICKEL PL.
HEX. HD. BIND. SCR.	BRASS	GREEN
BINDING SCREWS	BRASS	1-BLACK 1-WHITE
PROTECTIVE BOOT	NEOPRENE	GRAY

SYM	REVISIONS	APP	DATE
4	DUAL DIMENSIONS WERE FRACTIONAL ONLY. ADDED NOTES: HBL61CM65 WAS 61CM65. REVISED DRAWING TITLE: PER DGN #8862. JMN	TOM	12/5/01
3	GASKET WAS GREY: SPN	CJC	10/8/99
2	MATERIAL FOR COVER FLAP, BASE, & HINGE PIN WAS LEXAN NJL/C	JC	3-6-90
1	DIMA WAS 123/32	JC	10-1-85

SYM	REVISIONS	APP	DATE

TOLERANCES UNLESS OTHERWISE SPECIFIED,		HARVEY HUBBELL, INC.	
FRACTIONS ± 1/64	DECIMALS ± .005	BRIDGEPORT, CONN.	
		DR. BY C.J.C.	APP. BY
		TR. BY	SCALE FULL
		CHK'D. BY	DATE 11-20-74

DIMENSION SHEET FOR CAT. NO. HBL61CM65

REPAIRABLE NON-REPAIRABLE

B M-5800 4