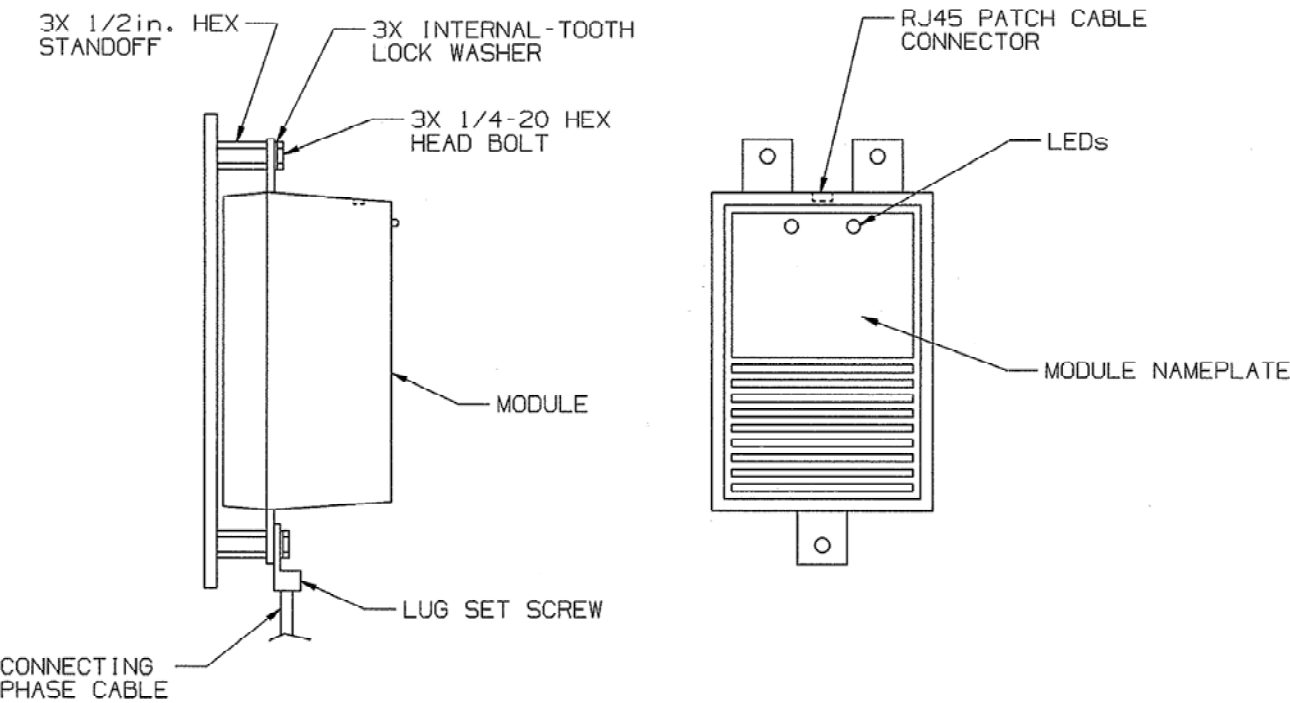


M-11580 2

DIMENSION SHEET FOR CAT. NO. **M-11580**
 REPAIRABLE NON-REPAIRABLE



LIST OF PARTS

DESCRIPTION	MATERIAL	FINISH

2	CROSSHATCHED HBL5P120BM, HBL6P120BM & HBL11P120BM PER DCN 17683 RCM	DJP	6/3/11
1	INITIAL RELEASE PER DCN 16566 RCM	BML	4/19/10
SYM	REVISIONS	APP	DATE

THE DESIGN AND DIMENSIONS OF THE PRODUCT SHOWN ON THIS DRAWING ARE SUBJECT TO CHANGE WITHOUT NOTICE

TITLE
 SURGE PROTECTIVE DEVICE REPLACEMENT MODULE, 120kA

TOLERANCES UNLESS OTHERWISE SPECIFIED FRACTIONS ± 1/64 DECIMALS ± .005 ANGLES ± 2°	WIRING DEVICE-KELLEMS HUBBELL INCORPORATED BRIDGEPORT, CT	
	DR. BY RCM	APP. BY SML
	TR. BY	SCALE 1/4
	CHK'D BY SML	DATE 4/19/10

CATALOG NO.	VOLTAGE	PHASE
HBL3P120BM	120/240V	1PH
HBL4P120BM	120/208V	3PH
HBL5P120BM	240V	3PH
HBL6P120BM	240/120V	3PH
HBL8P120BM	277/480V	3PH
HBL9P120BM	480V	3PH
HBL10P120BM	347/600V	3PH
HBL11P120BM	600V	3PH

NOTES: (UNLESS OTHERWISE SPECIFIED)
 1) .XX TOLERANCES TO BE ±.03
 2) FOR REPLACEMENT ONLY.

DIMENSIONS ARE IN INCHES [mm]