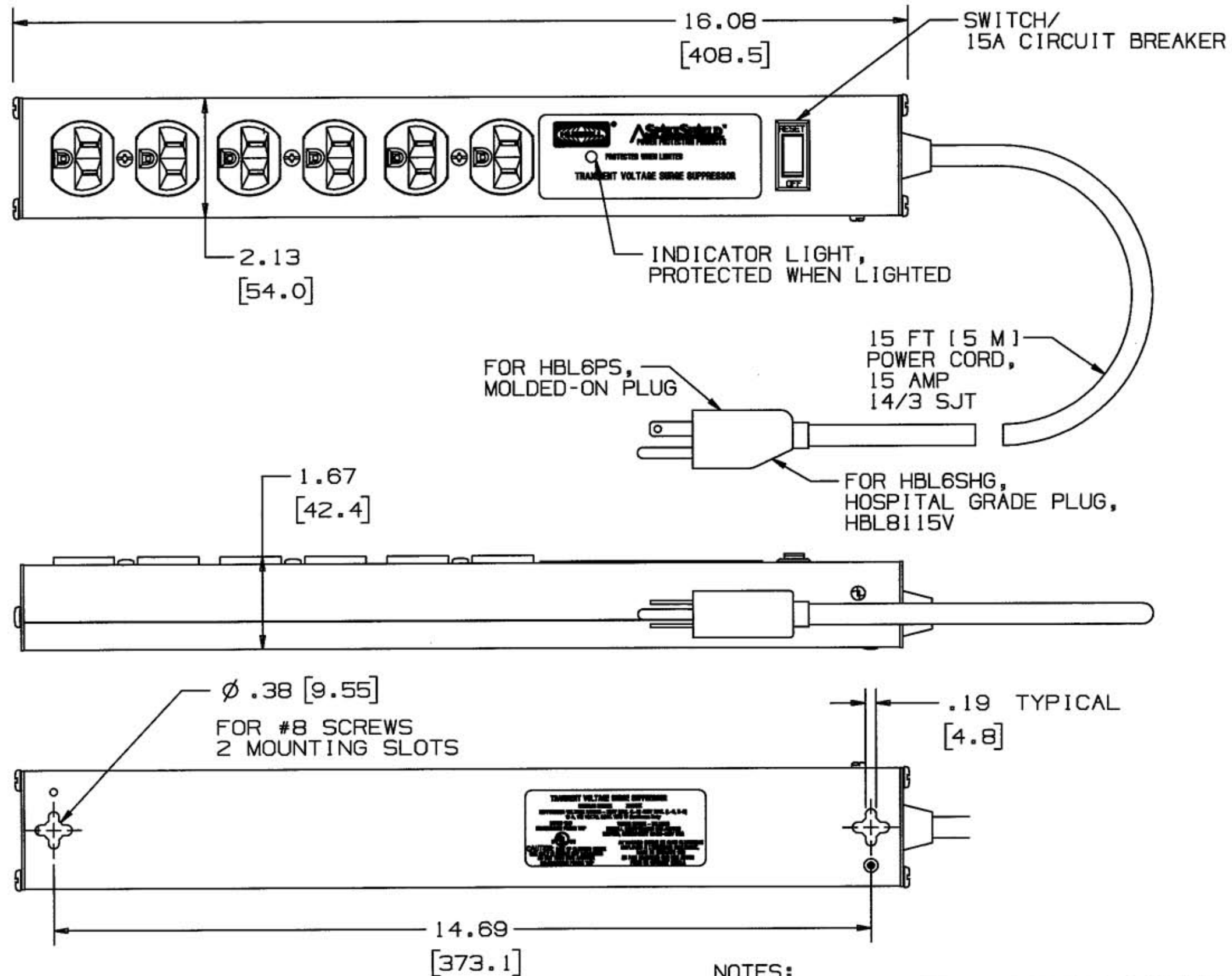


M-86143



NOTES:
 1. DIMENSIONS ARE IN INCHES & [MILLIMETERS].
 2) .XX TOLERANCES TO BE ± .03

LIST OF PARTS

DESCRIPTION	MATERIAL	FINISH
BASE	ALUMINUM	BLACK PAINT
END CAPS	STEEL	BLACK PAINT
SCREWS	STEEL	BLACK
POWER CORD COVER	PVC	BLACK
	ALUMINUM	BLACK PAINT

SYMBOL	REVISIONS	APP	DATE
3	ADDED 15A TO "SWITCH/CIRCUIT BREAKER", "14/3 SJT" TO "15 FT (5 M) POWER CORD, 15 AMP" "COVER" TO LIST OF PARTS, "6 OUTLET 120V 50/60 Hz" TO DWG. TITLE, AND NOTE 2. IN LIST OF PARTS, "BASE" WAS "HOUSING", IN TABLE, "HBL6PSHG" WAS "HBL6SHG" PER DCN #12944. JMN	DJP	7/12/06
2	ADDED CORD LABEL COLUMN PER DCN. 12012 TJV	SL	9-24-04
1	RELEASED PER DCN 9005	SRE	10/31/01

THE DESIGN AND DIMENSIONS OF THE PRODUCT SHOWN ON THIS DRAWING ARE SUBJECT TO CHANGE WITHOUT NOTICE

TITLE SURGE SUPPRESSION MULTIPLE OUTLET STRIP 6 OUTLET 120V 50/60 Hz

TOLERANCES UNLESS OTHERWISE SPECIFIED	WIRING DEVICE-KELLEMS HUBBELL INCORPORATED BRIDGEPORT, CT	
FRACTIONS ± 1/64	DR. BY SRE	APP. BY SL
DECIMALS ± .005	TR. BY	SCALE 1:1
ANGLES ± 2°	CHK'D BY SL	DATE 10/17/01

DIMENSION SHEET FOR CAT. NO. M-8614
 REPAIRABLE NON-REPAIRABLE

M-8614

W

CATALOG NUMBER	RECEPTACLE DESCRIPTION	AMPERAGE	RECEPTACLE FACE MATERIAL	CORD LABEL
HBL6PS	SPEC. GRADE - HBL5252	15A	NYLON	NO
HBL6PSHG	HOSPITAL GRADE - HBL8200	15A	THERMOPLASTIC POLYESTER	YES