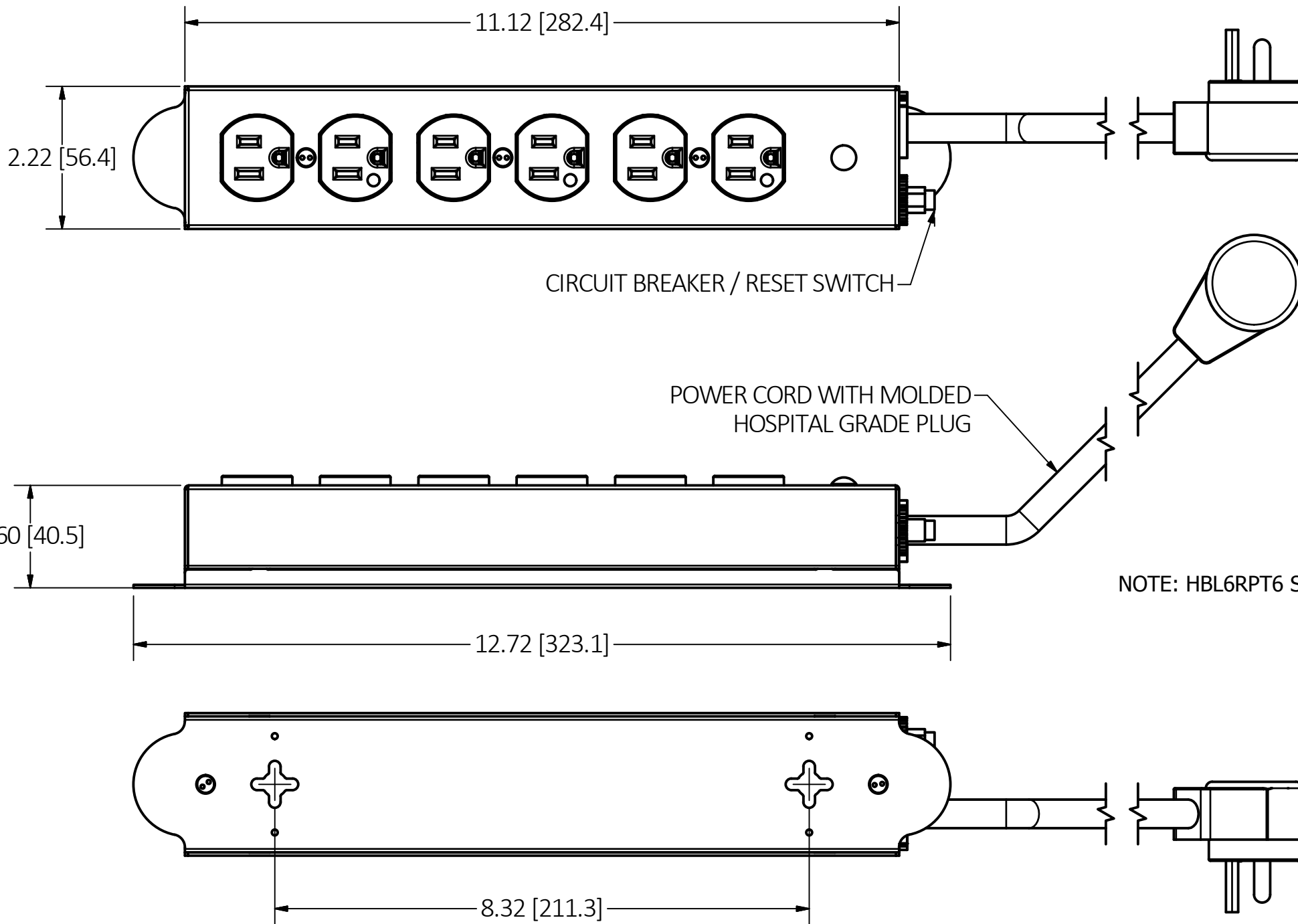


M-13720

1



LIST OF PARTS

DESCRIPTION	MATERIAL	FINISH
ENCLOSURE BASE	GALV. STEEL	POWDERCOAT (SEE TABLE FOR COLOR)
ENCLOSURE COVER	GALV. STEEL	POWDERCOAT (SEE TABLE FOR COLOR)
POWER CORD	THERMOPLASTIC	SEE TABLE
SCREWS	STEEL	ZINC
DUPLEX RECEPTACLES	THERMOPLASTIC	SEE TABLE
CIRCUIT BREAKER	THERMOPLASTIC	BLACK

DIMENSION SHEET FOR CAT. NO. HBL6RPTXX

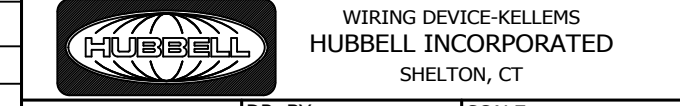
NOTES:  
 - cULus LISTED TO UL 1363.  
 - ALL MODELS EQUIPPED WITH TAMPER RESISTANT RECEPTACLES.

CATALOG#	DESCRIPTION	CORD LENGTH	RATING	COLOR
HBL6RPT6	15A RPT 6 OUTLET 6' CORD WHITE	6 FT	15A 125V	WHITE
HBL6RPT620	20A RPT 6 OUTLET 6' CORD WHITE	15 FT	15A 125V	WHITE
HBL6RPT15	15A RPT 6 OUTLET 15' CORD WHITE	6 FT	20A 125V	WHITE
HBL6RPT1520	20A RPT 6 OUTLET 15' CORD WHITE	15 FT	20A 125V	WHITE
HBL6RPT6BK	15A RPT 6 OUTLET 6' CORD BLACK	6 FT	15A 125V	BLACK
HBL6RPT620BK	20A RPT 6 OUTLET 6' CORD BLACK	15 FT	15A 125V	BLACK
HBL6RPT15BK	15A RPT 6 OUTLET 15 CORD BLACK	6 FT	20A 125V	BLACK
HBL6RPT1520BK	20A RPT 6 OUTLET 15 CORD BLACK	15 FT	20A 125V	BLACK

1	RELEASED PER DCN #23347	EMD	9/26/17
REV	DESCRIPTION	APP	DATE

THE DESIGN AND DIMENSIONS OF THE PRODUCT SHOWN ON THIS DRAWING ARE SUBJECT TO CHANGE WITHOUT NOTICE. DIMENSIONS ARE IN INCHES [mm].

TITLE  
 RELOCATABLE POWER TAPS



TOLERANCES UNLESS OTHERWISE SPECIFIED .XX = ± .01 .XXX = ± .005 ANGLE TOL. ±2'	DR. BY EMD	SCALE 1/2
	CHK. BY	DATE

B

M-13720

1