

M-10604 2

BLANK	
CAT. NO.	LENGTH
HBLALU57BL	12.00
HBLALU57BL__	5.0-148.0

SINGLE RECEPTACLE Ø1.40	
CAT. NO.	LENGTH
HBLALU57E	12.00
HBLALU57E__	5.0-148.0

RECTANGULAR OPENING	
CAT. NO.	LENGTH
HBLALU57G	12.00
HBLALU57G__	5.0-148.0

MODULAR BEZEL OPENING	
CAT. NO.	LENGTH
HBLALU57LPB	12.00
HBLALU57LPB__	5.0-148.0

DUPLEX OPENING	
CAT. NO.	LENGTH
HBLALU57DR	12.00
HBLALU57DR__	5.0-148.0

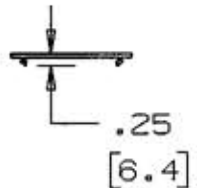
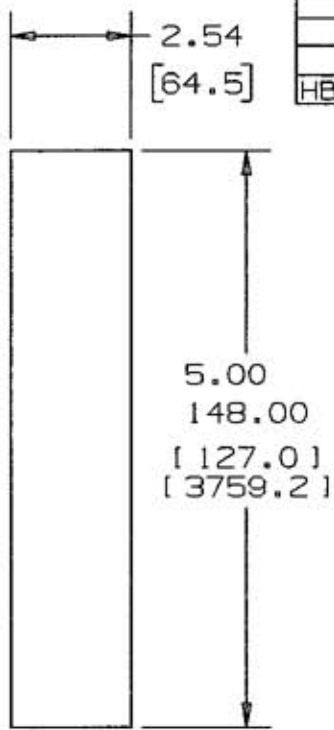
SINGLE RECEPTACLE Ø1.59	
CAT. NO.	LENGTH
HBLALU57F	12.00
HBLALU57F__	5.0-148.0

SWITCH OPENING	
CAT. NO.	LENGTH
HBLALU57N	12.00
HBLALU57N__	5.0-148.0

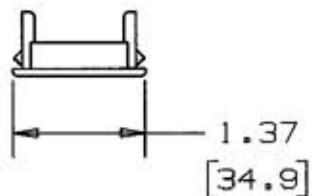
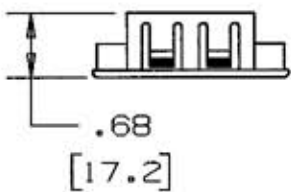
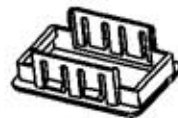
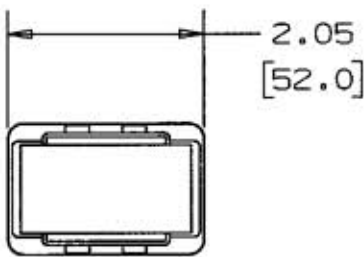
ORTRONICS OPENING	
CAT. NO.	LENGTH
HBLALU57ABRT	12.00
HBLALU57ABRT__	5.0-148.0

LIST OF PARTS

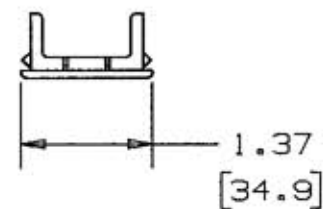
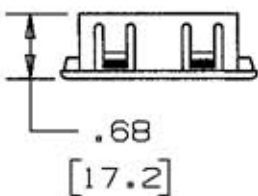
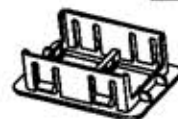
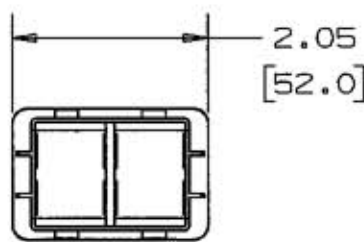
DESCRIPTION	MATERIAL	FINISH
COVER PLATE	ALUMINUM	SATIN ANODIZED
BEZEL	PC/ABS	GRAY



TYP. COVER PLATE DIMENSIONS



BEZEL SUPPLIED WITH CAT. NO. HBLALU57ABRT



BEZEL SUPPLIED WITH CAT. NO. HBLALU57ABRT

2	ADDED CAT. NOS. W/SUFFIXES; 5.00/148.00 WAS 12.00 DCN14804	SRE	2/11/08
1	RELEASED PER DCN13903	SRE	4/30/07
SYM	REVISIONS	APP	DATE

THE DESIGN AND DIMENSIONS OF THE PRODUCT SHOWN ON THIS DRAWING ARE SUBJECT TO CHANGE WITHOUT NOTICE

TITLE COVER PLATES ALUMINUM SERIES

TOLERANCES UNLESS OTHERWISE SPECIFIED
 FRACTIONS ± 1/64
 DECIMALS ± .005
 ANGLES ± 2°

WIRING DEVICE-KELLEMS HUBBELL INCORPORATED BRIDGEPORT, CT

DR. BY SRE	APP. BY SRE
TR. BY	SCALE 1:1
CHK'D BY SRE	DATE 4/30/07

NOTE: ALL DIMENSIONS IN INCHES AND [MM]