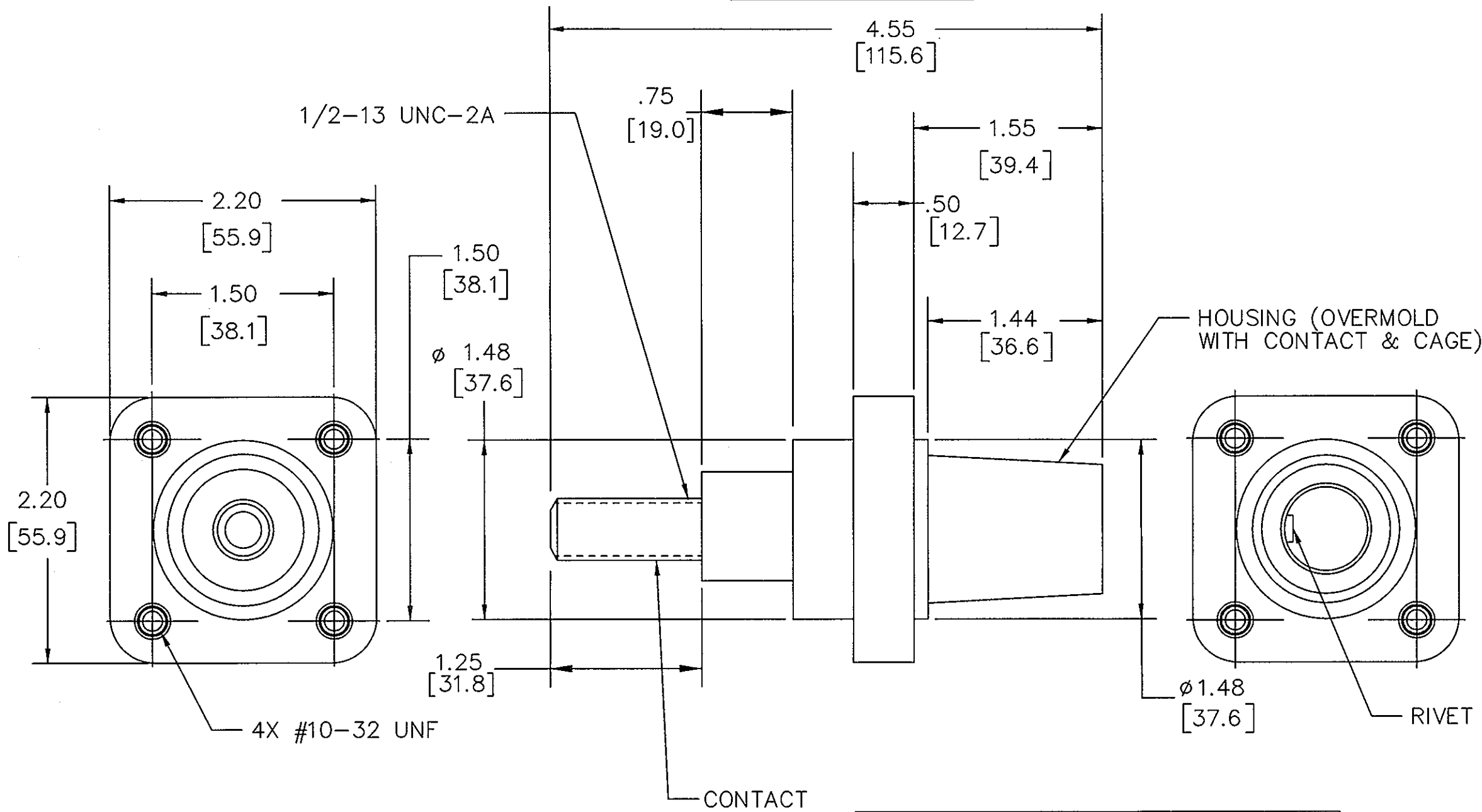


M-12434 2



- NOTES:
1. DIMENSIONS ARE INCHES $\pm.02$
[mm] $\pm.5$
 2. RATING: 600VAC/250VDC 400 AMP.
 3. UL/c-UL ENCLOSURE TYPES 3R, 4X, 12,
SEE INSTRUCTION SHEET

HUBBELL CAT. NO.	COLOR
HBLFRSCEBK	BLACK
HBLFRSCEW	WHITE
HBLFRSCGEGN	GREEN
HBLFRSCER	RED
HBLFRSCEBL	BLUE
HBLFRSCEO	ORANGE
HBLFRSCEBN	BROWN
HBLFRSCEY	YELLOW

LIST OF PARTS

DESCRIPTION	MATERIAL	FINISH
HOUSING	TPE	SEE TABLE
RIVET	BRASS	
CONTACT	BRASS	
CAGE	NYLON	BLACK
INSERT	BRASS	

2	ADDED INCH AND METRIC TOLERANCE SPEC. TO NOTE 1. CONTACT THREADED STUD LENGTH, 1.25 [31.8] WAS 1.250 [31.8]. PER DCN 20483 DDL <i>DJP</i>	DJP	05/02/14
1	NEW RELEASE PER DCN 20058	DJP	09/04/13
SYM	REVISIONS	APP	DATE

THE DESIGN AND DIMENSIONS OF THE PRODUCT SHOWN ON THIS DRAWING ARE SUBJECT TO CHANGE WITHOUT NOTICE

TITLE
SINGLE POLE FEMALE RECEPTACLE W/STUD

TOLERANCES UNLESS OTHERWISE SPECIFIED		WIRING DEVICE-KELLEMS HUBBELL INCORPORATED SHELTON, CT	
.XX = $\pm.01$.XXX = $\pm.005$	DR. BY	APP. BY
ANGLES = $\pm 2^\circ$		TR. BY	SCALE NONE
		CHK. BY	DATE 09/04/13