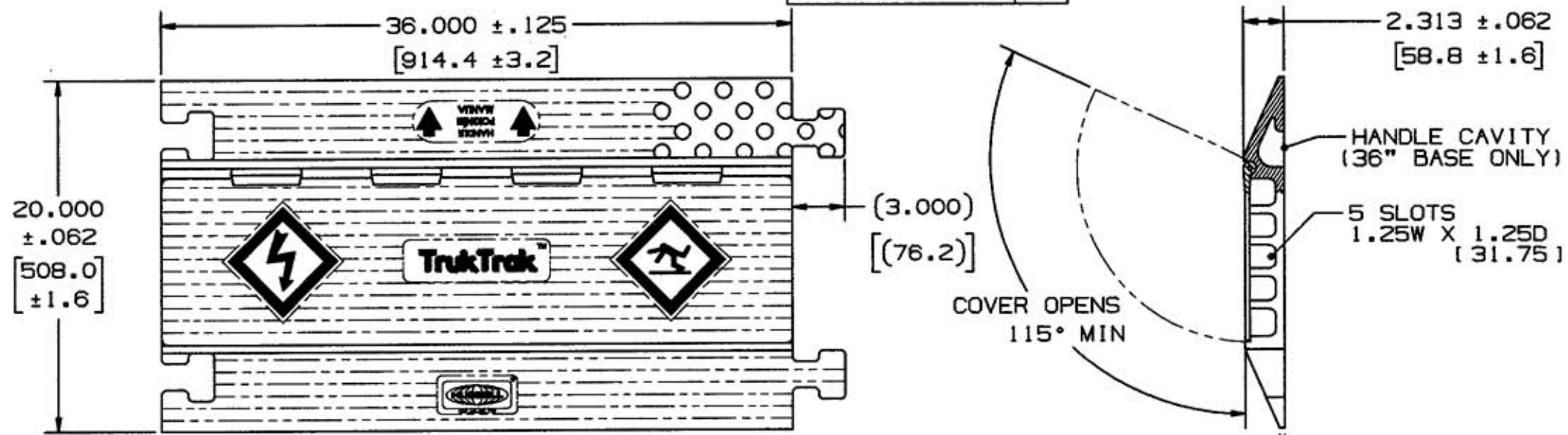
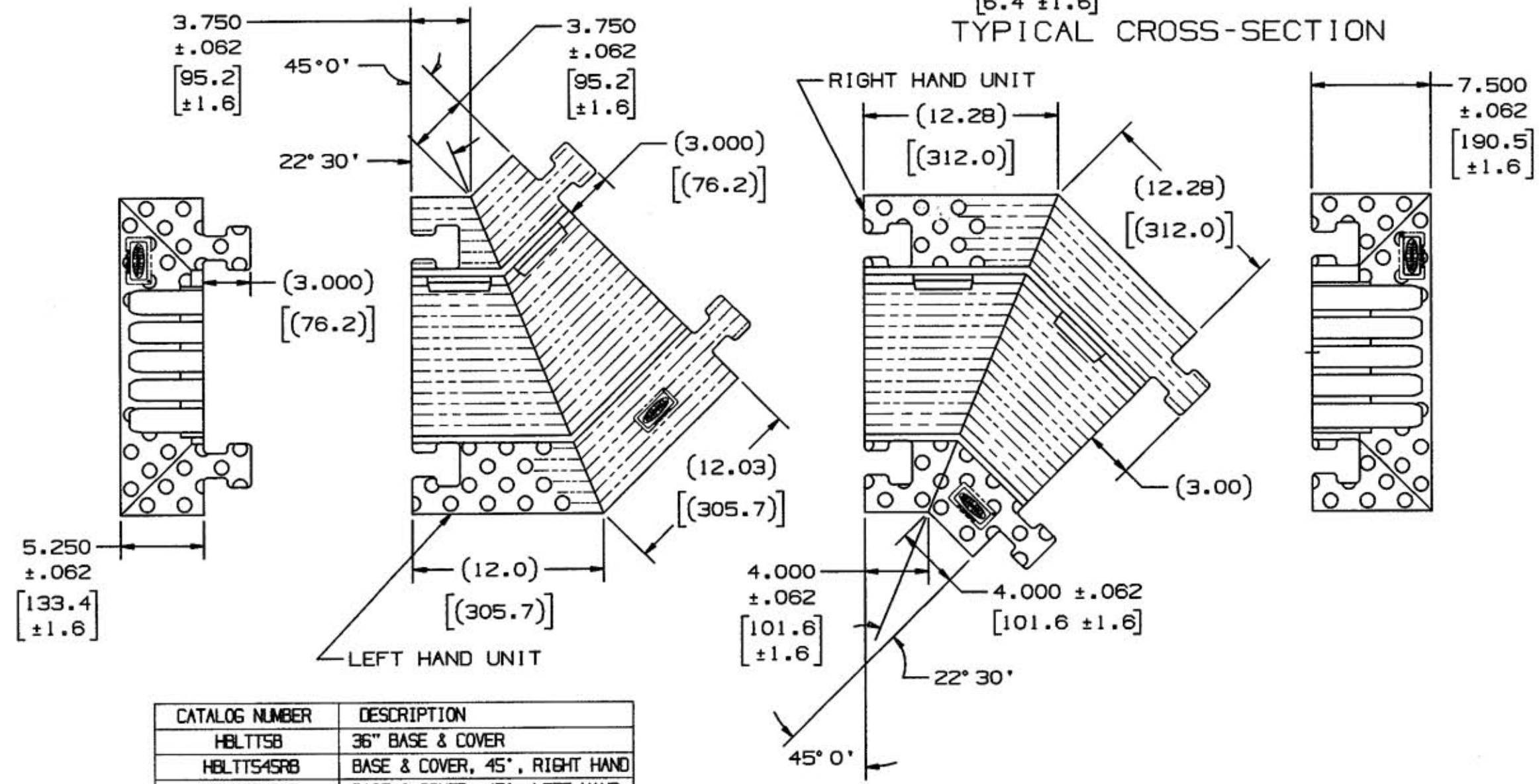


# M-7364 5



TYPICAL CROSS-SECTION



CATALOG NUMBER	DESCRIPTION
HBLTTSB	36" BASE & COVER
HBLTT545RB	BASE & COVER, 45°, RIGHT HAND
HBLTT545LB	BASE & COVER, 45°, LEFT HAND
HBLTTSECB	ENDCAPS (PAIR)

LIST OF PARTS		
DESCRIPTION	MATERIAL	FINISH
PROTECTOR BASE	POLYURETHANE	BLUE
PROTECTOR COVER	POLYURETHANE	YELLOW
PROTECTOR HINGE PIN, BASE	FIBERGLASS	NATURAL
PROTECTOR BASE, 45° R.H.	POLYURETHANE	BLUE
PROTECTOR COVER, 45° R.H.	POLYURETHANE	YELLOW
PROTECTOR HINGE PIN, R.H.	FIBERGLASS	NATURAL
PROTECTOR BASE, 45° L.H.	POLYURETHANE	BLUE
PROTECTOR COVER, 45° L.H.	POLYURETHANE	YELLOW
PROTECTOR HINGE PIN, L.H.	FIBERGLASS	NATURAL
PROTECTOR ENDCAP, L.H.	POLYURETHANE	YELLOW
PROTECTOR ENDCAP, R.H.	POLYURETHANE	YELLOW

SYM	REVISIONS	APP	DATE
5	2/24/03 CATALOG NUMBERS HBLTTSB WAS HBLTTS5A. HBLTT545RB WAS HBLTT545RA HBLTT545LB WAS HBLTT545LA HBLTT5SECB WAS HBLTT5SECA REMOVED NOTE "ABRADED SURFACE TYP FOR ALL PARTS". PER DCN 10384 SPN	WUH	2/27/03
4	11/02/01 ADDED METERIC EQUIVALENTS TO ALL DIMS. ADDED "SEE TABLE" TO DIM. SHT. FOR CAT. NO. PER DCN 8696 SPN	TCM	2/6/02
3	5/19/00 FINISH BLUE WAS BLACK REPLACED "DIAMOND PATTERN" WITH DISK PATTERN. DCN#7573 PAC	WUH	5/19/00
2	11/21/95 ADDED NOTE "ABRADED SURFACE TYP FOR ALL PARTS" PER DCN 3885 JVO	JVO	11/21/95
1	RELEASED PER DCN3600	SRE/WUH	6/6/95

THE DESIGN AND DIMENSIONS OF THE PRODUCT SHOWN ON THIS DRAWING ARE SUBJECT TO CHANGE WITHOUT NOTICE

TITLE TRUKTRAK  
MODULAR CABLE PROTECTION SYSTEM,  
5 CHANNEL

TOLERANCES UNLESS OTHERWISE SPECIFIED		WIRING DEVICE DIVISION HUBBELL, INCORPORATED BRIDGEPORT, CT	
FRACTIONS	± 1/64	DR. BY S.R.E.	APP. BY WUH
DECIMALS	± .005	TR. BY	SCALE 1/8
ANGLES	± 2°	CHK'D BY WUH	DATE 6/6/95

DIMENSION SHEET FOR CAT. NO. SEE TABLE  
 REPAIRABLE  NON-REPAIRABLE   
 B M-7364 5