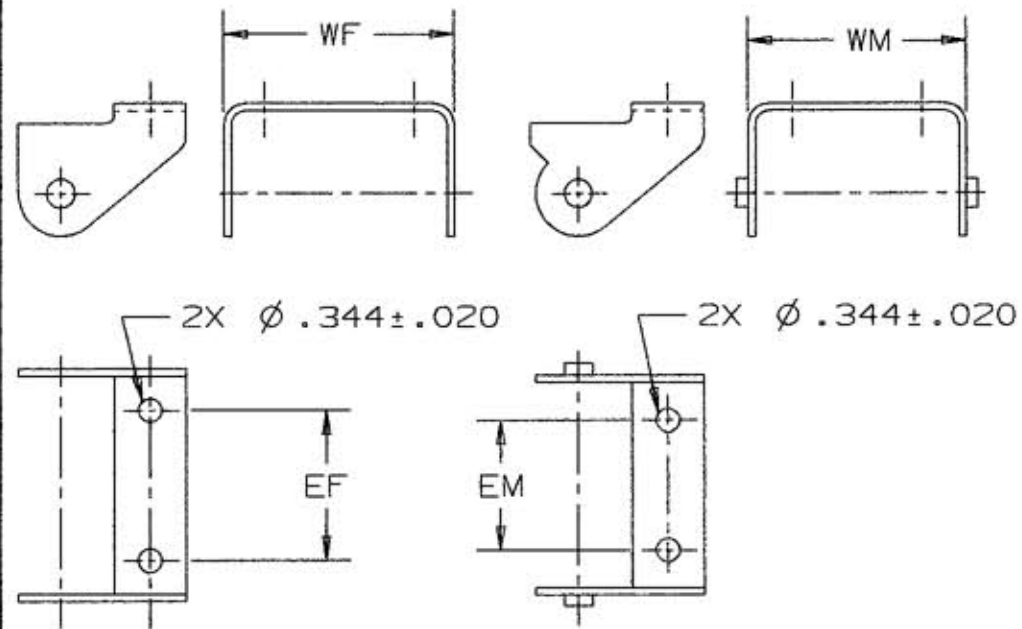


M-7753 2



FEMALE

MALE

FIG. 2

CATALOG NUMBER	FIG.	WF	WM	B ±.03	C ±.05	EF ±.06	EM ±.06	R ±.03	T TRAVEL	TRACK LGTH (REF)	MAX. CABLE O.D.
HCT25134K	1,2	3.21	3.03	2.60	9.30	2.08	1.80	3.40	3 FT	4.5 FT	.680
HCT25134I	1								1 FT	1 FT	
HCT25234K	1,2	4.87	4.69	4.25	9.30	3.74	3.46	3.40	3 FT	4.5 FT	.680
HCT25234I	1								1 FT	1 FT	
HCT25247K	1,2	4.87	4.69	4.25	12.06	3.74	3.46	4.78	3 FT	5 FT	.956
HCT25247I	1								1 FT	1 FT	
HCT25347K	1,2	7.21	7.03	6.60	12.06	6.08	5.80	4.78	3 FT	5 FT	.956
HCT25347I	1								1 FT	1 FT	
HCTBK251	2	3.21	3.03			2.08	1.80				
HCTBK252	2	4.87	4.69			3.74	3.46				
HCTBK253	2	7.21	7.03			6.08	5.80				

IF "T" = 1 FT. THEN SEE NOTE 2.

NOTES: UNLESS OTHERWISE SPECIFIED

- HCT25\_\_\_K PARTS ARE SUPPLIED WITH MOUNTING BRACKETS.
- CATALOG NUMBERS HCT25\_\_\_I ARE EXTENDER KITS FOR SIMILAR CABLE TRAK CONFIGURATIONS, AND ARE NOT SUPPLIED WITH MOUNTING BRACKETS.
- TRAVEL CAN BE DOUBLED IF CABLE TRAK IS TERMINATED AT MACHINE TRAVEL CENTER.
- TOTAL TRAVEL (SELF SUPPORTED) NO SAG = 9 FT., WITH SAG = 13.5 FT.

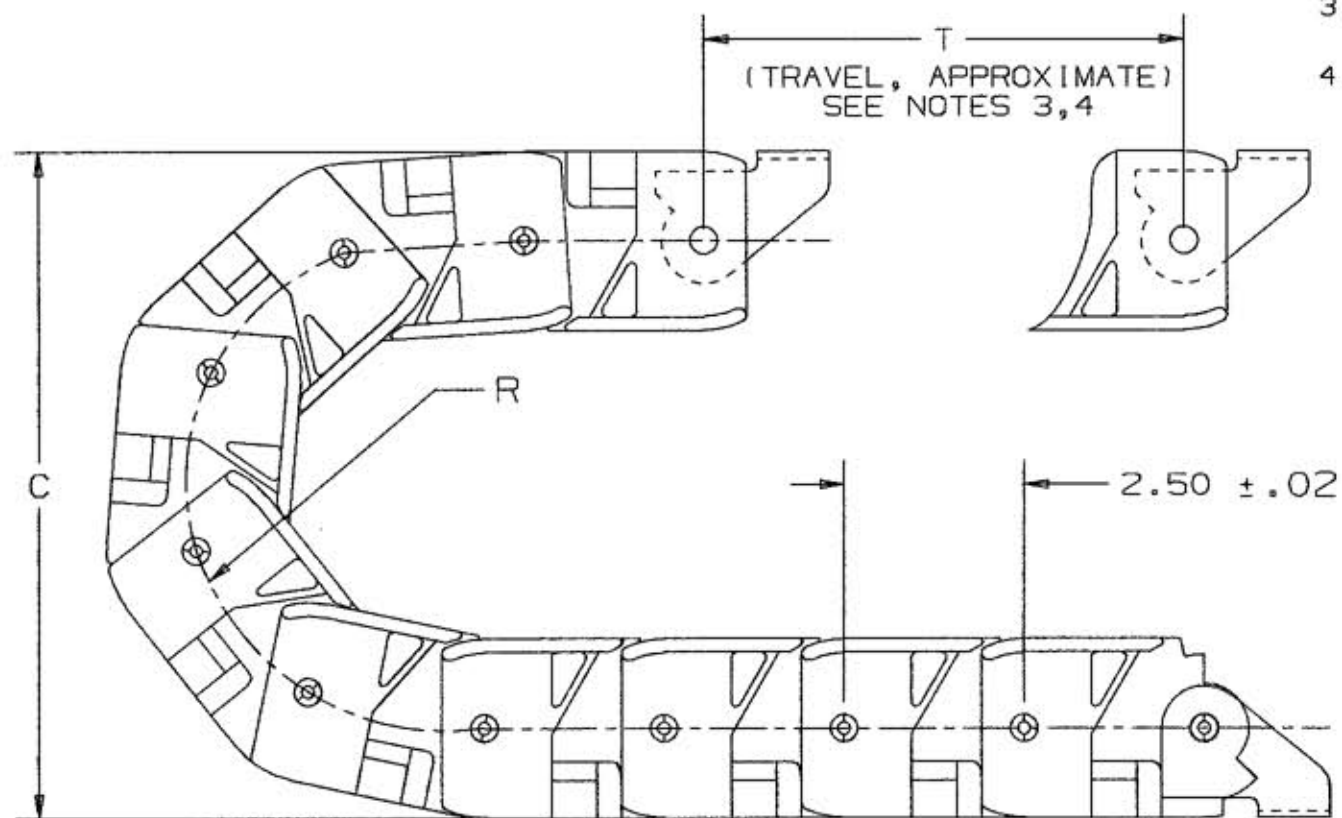


FIG. 1

LIST OF PARTS

DESCRIPTION	MATERIAL	FINISH
LINK	GLASS REINF. NYLON 6	BLACK
BRACKET	STEEL	BLACK COATED

DIMENSION SHEET FOR CAT. NO.

REPAIRABLE

NON-REPAIRABLE

SYM	REVISIONS	APP	DATE
2	ADDED HCTBK251, 252, 253 CAT'S, ADDED "FIG.", "WF", "WM", AND "TRACK LGTH" COLUMNS TO CHART.	FRS	RTK 10/26/98
1	"X" REMOVED; LAST X-REVISION WAS X-0. RELEASED FOR PRODUCTION PER DCN #5250 JMN	JLW	7/9/97

B

THE DESIGN AND DIMENSIONS OF THE PRODUCT SHOWN ON THIS DRAWING ARE SUBJECT TO CHANGE WITHOUT NOTICE

TITLE  
CABLE TRAK

M-7753

TOLERANCES UNLESS OTHERWISE SPECIFIED	WIRING DEVICE-KELLEMS HUBBELL INCORPORATED BRIDGEPORT, CT	
FRACTIONS ± 1/64	DR. BY JLW	APP. BY JLW
DECIMALS ± .005	TR. BY	SCALE
ANGLES ± 2'	CHK'D BY JLW	DATE 6-2-97

2