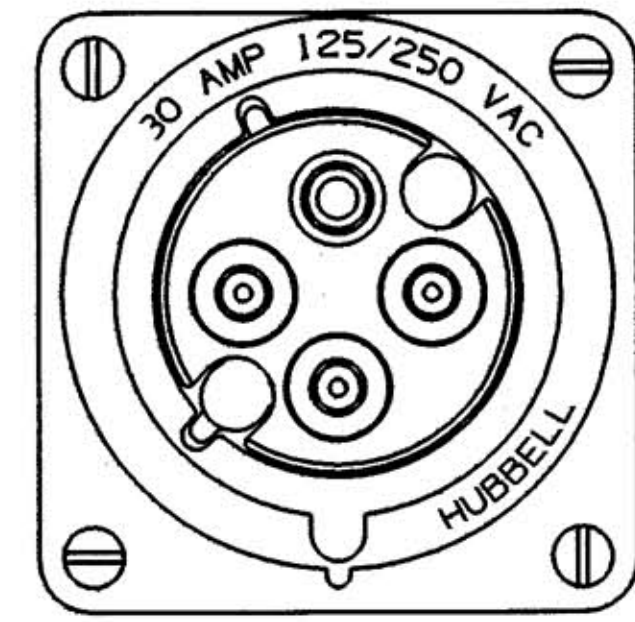


MATERIALS:

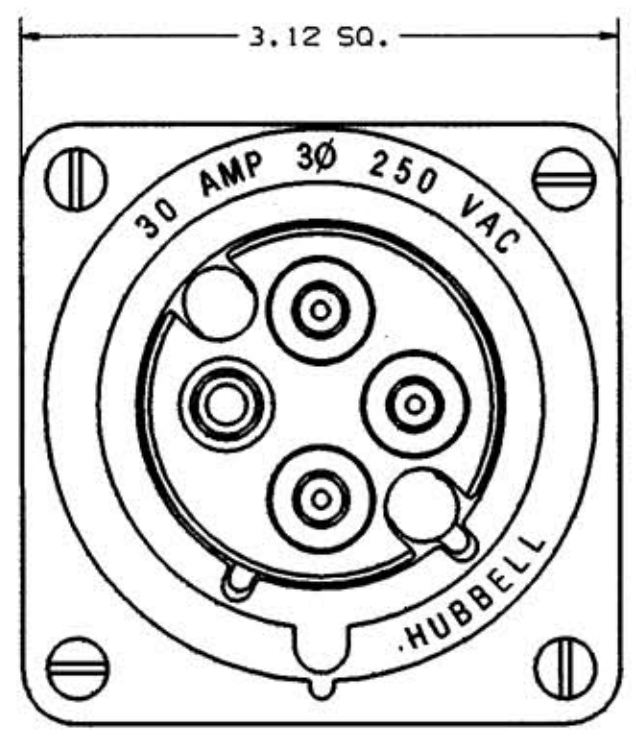
- BODY-----NYLON ZYTEL 101-L
- SLEEVE CARRIER-----NYLON ZYTEL 101-L
- WALL PLATE-----NYLON ZYTEL 101-L
- ADAPTER PLATE-----GALVANIZED STEEL
- SLEEVES-----BRASS CDA #360
- TERMINAL SCREWS(4)-----300 SERIES SST.
- WALL PLATE SCREWS(4)-----ZINC PLATED STEEL
- ADAPTER PLATE SCREWS(4)-----ZINC PLATED STEEL
- MTG SCREWS(4)-----ZINC PLATED STEEL

PRODUCT INFORMATION:

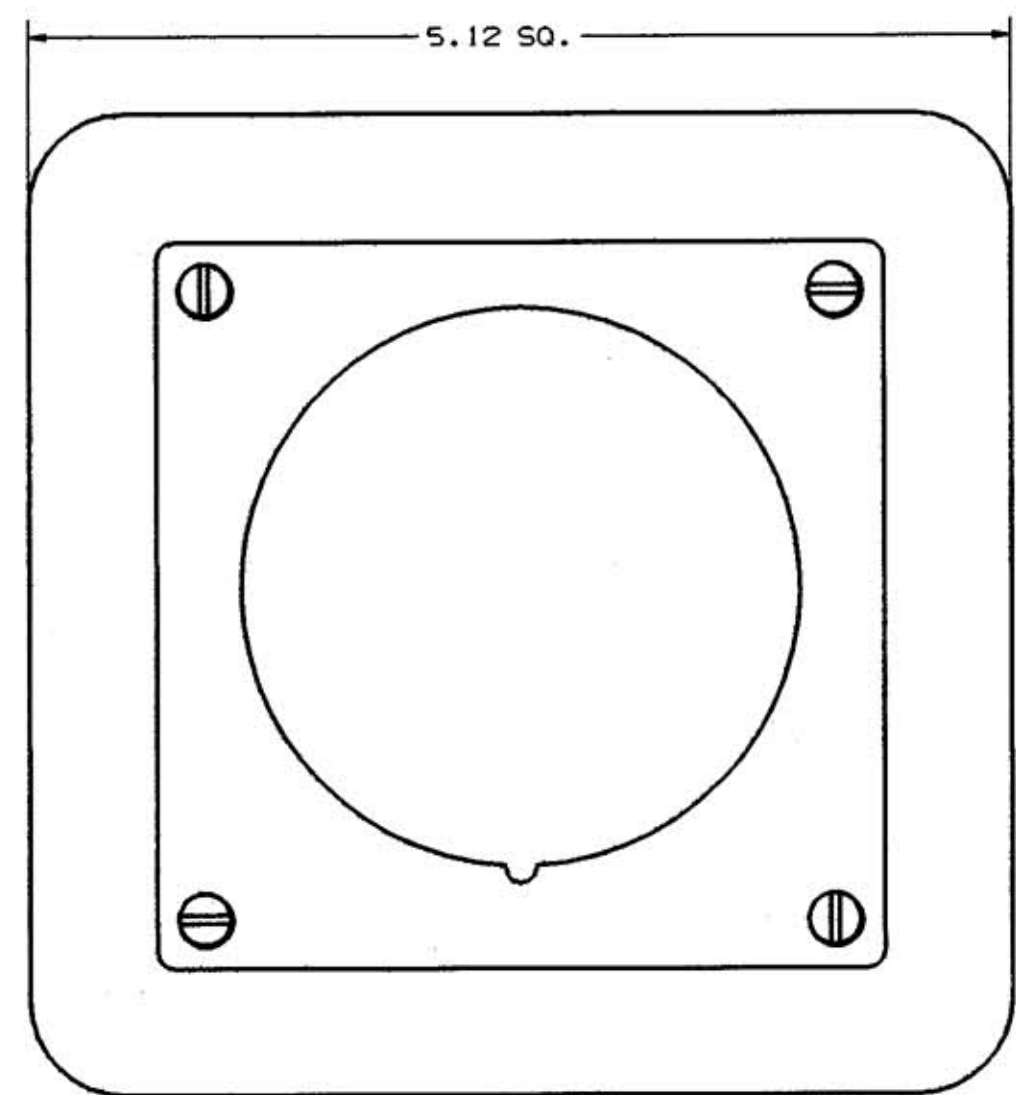
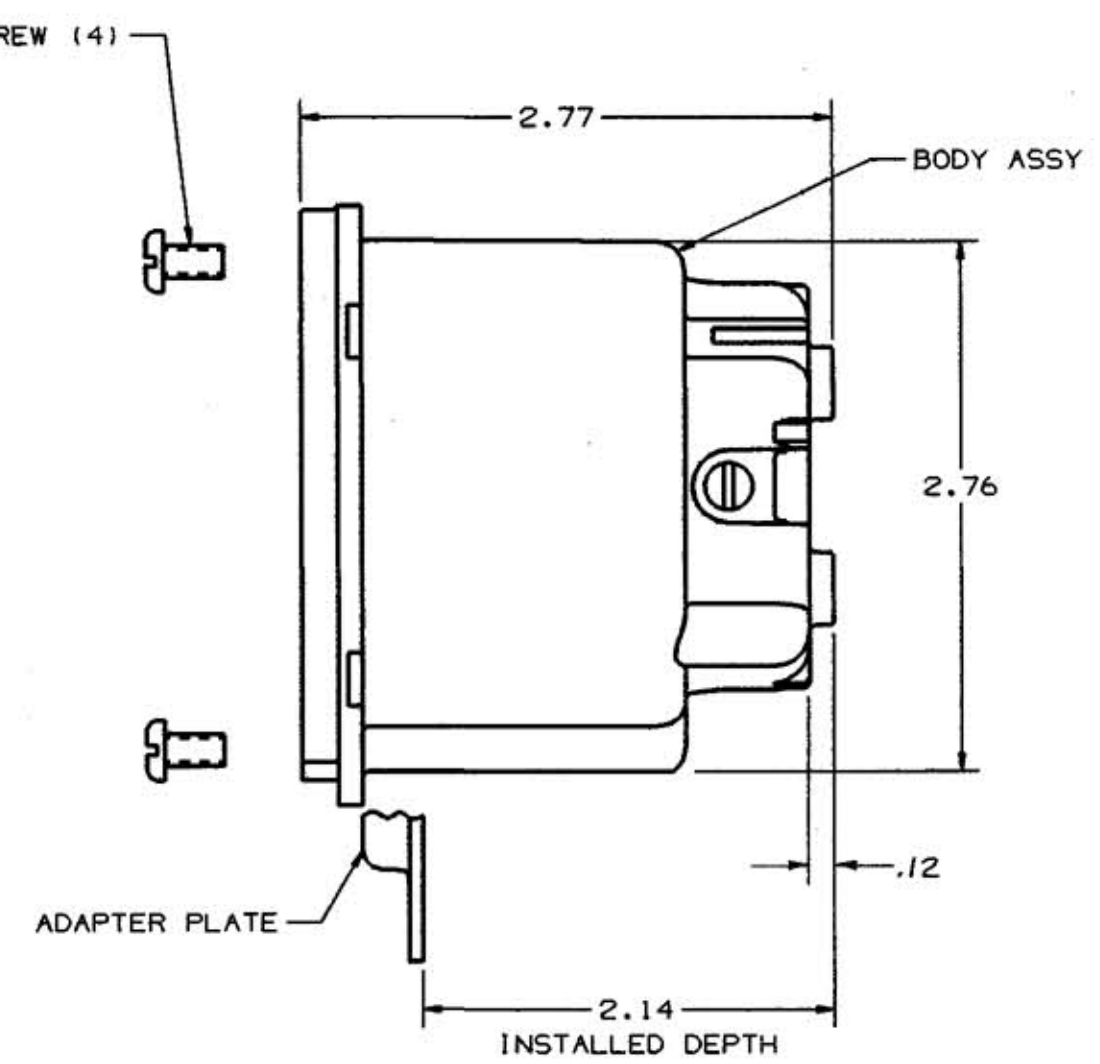
1. THIS PRODUCT IS NOT WATER TIGHT.
2. SHIPPED WITH WALL PLATE, ADAPTER PLATE, WALL PLATE SCREWS, ADAPTER SCREWS AND MTG SCREWS UNASSEMBLED.
3. BODY ASSEMBLY IS PRE-ASSEMBLED CONSISTING OF BODY, SLEEVE CARRIER, SLEEVES, TERMINAL SCREWS AND (2) BODY ASSY SCREWS (300 SERIES SST.).
4. COLOR, RATING, AND CONTACT CONFIG. IS COMPATIBLE WITH IEC 309-2.
5. APPROVALS: UL LISTED, CSA CERTIFIED.



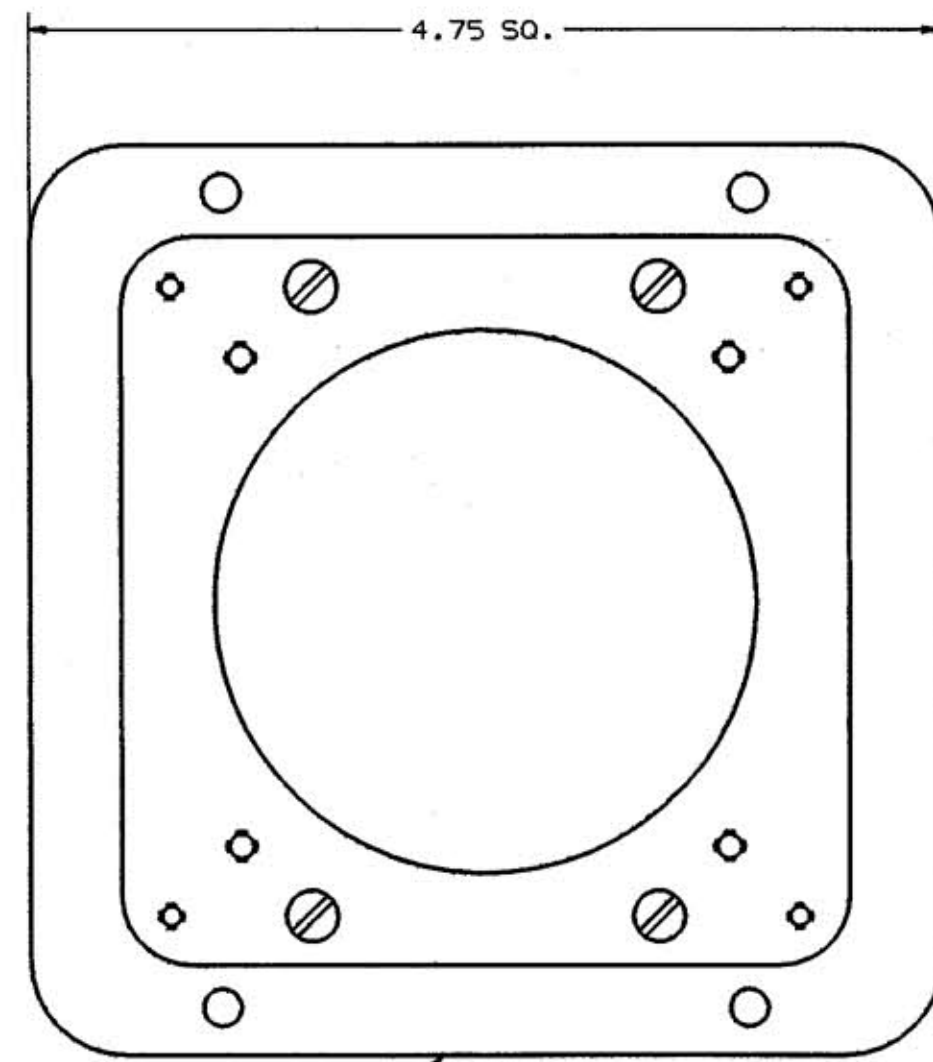
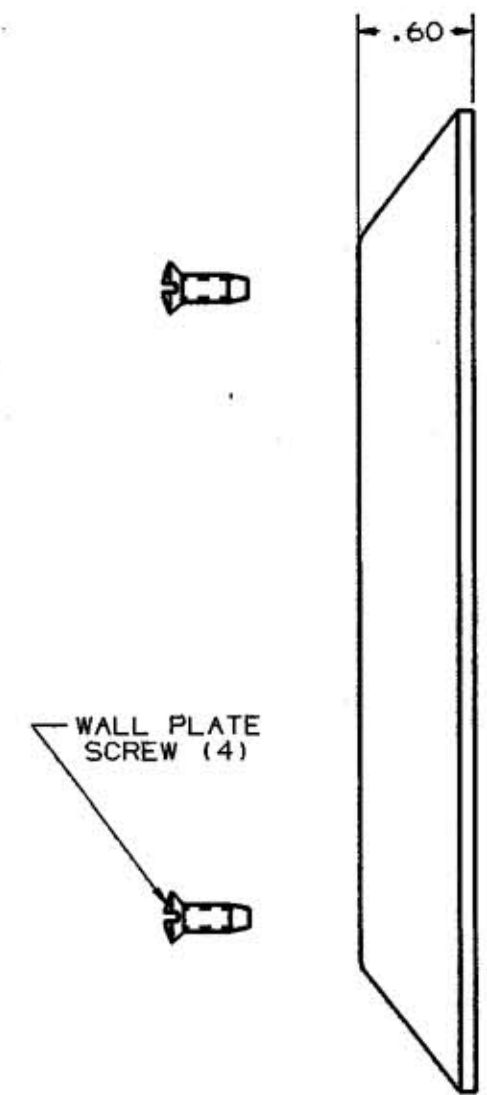
CAT. NO. L43OR12
RATING- 30A 125/250 VAC
(ORANGE BODY)



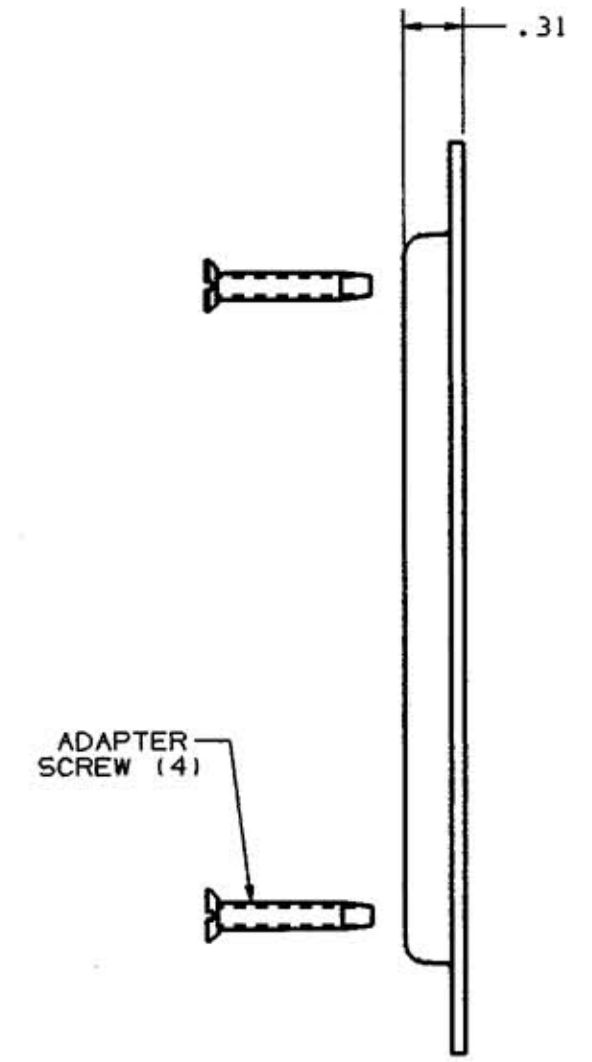
CAT. NO. L43OR9
RATING- 30A 3Ø 250VAC
(BLUE BODY)



WALL PLATE



ADAPTER PLATE



REVISIONS	5-1-89 X-REMOVED: LAST "X" REV WAS X-0
SUB	1

"IN ACCEPTING OUR DRAWINGS OR BLUEPRINTS FOR QUOTATION OR OTHER PURPOSES, YOU AGREE NOT TO DISCLOSE TO OTHERS THE IDEAS, INFORMATION OR DESIGNS THEREIN SHOWN, AND THAT YOU WILL MAKE NO USE OF OUR DRAWINGS OR BLUEPRINTS OR OF THE IDEAS, INFORMATION OR DESIGNS THEREIN SHOWN WITHOUT OUR PERMISSION."

ISO STANDARD FOR 3rd ANGLE PROJECTION

DO NOT SCALE DRAWING USE DIMENSIONS ONLY

TITLE
30A LOW PROFILE WALL MOUNT P&S RECEPTACLE

WIRING DEVICE DIVISION
HUBBELL INCORPORATED
BRIDGEPORT, CT.

DR. BY M.P. APP. BY
PROJECT NO. 1045 TR. BY SCALE 1:1
CHK. BY DATE 5-1-89

DR. NO. **M-6790**

SHEET 1 OF 1