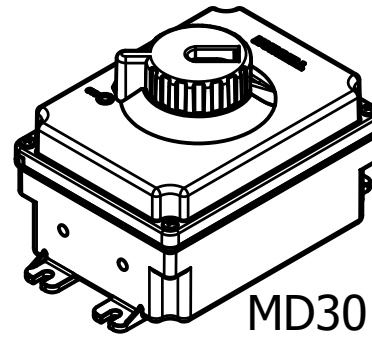
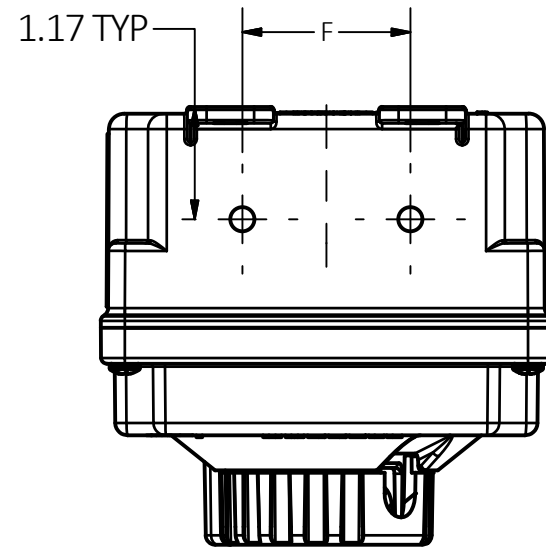
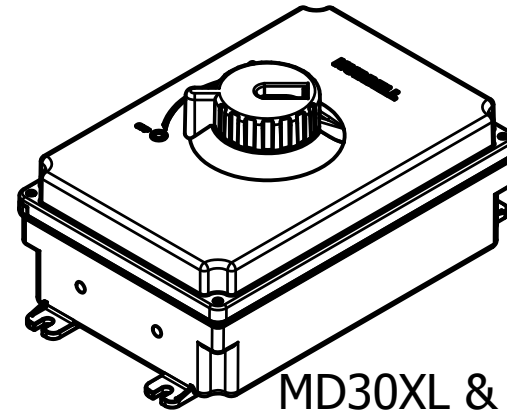


M-12803

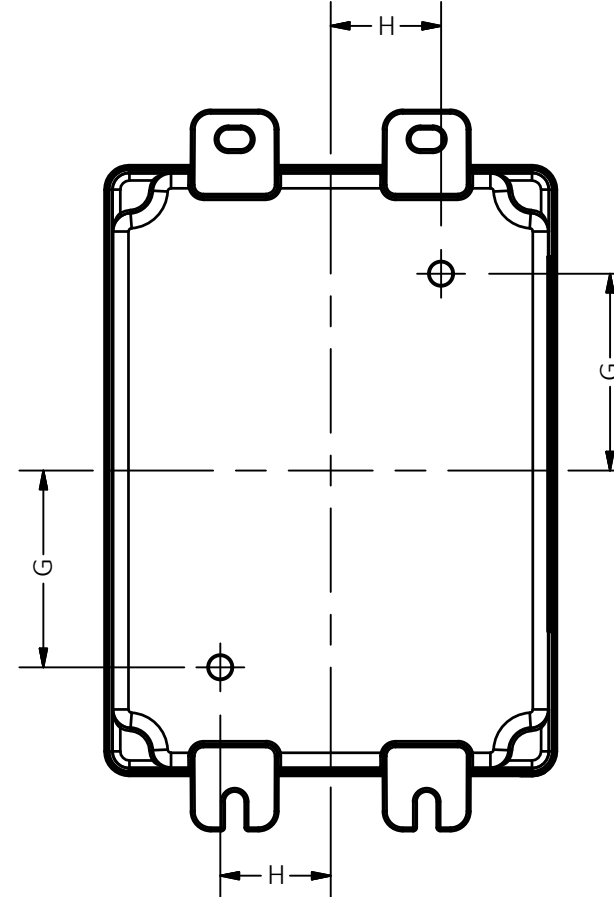
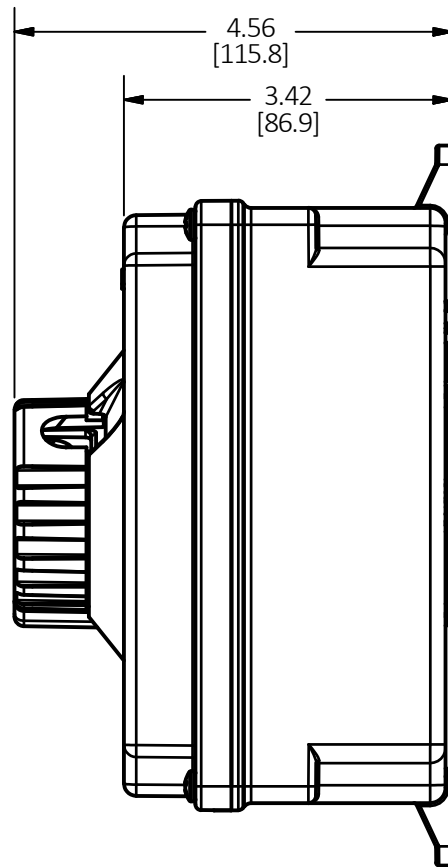
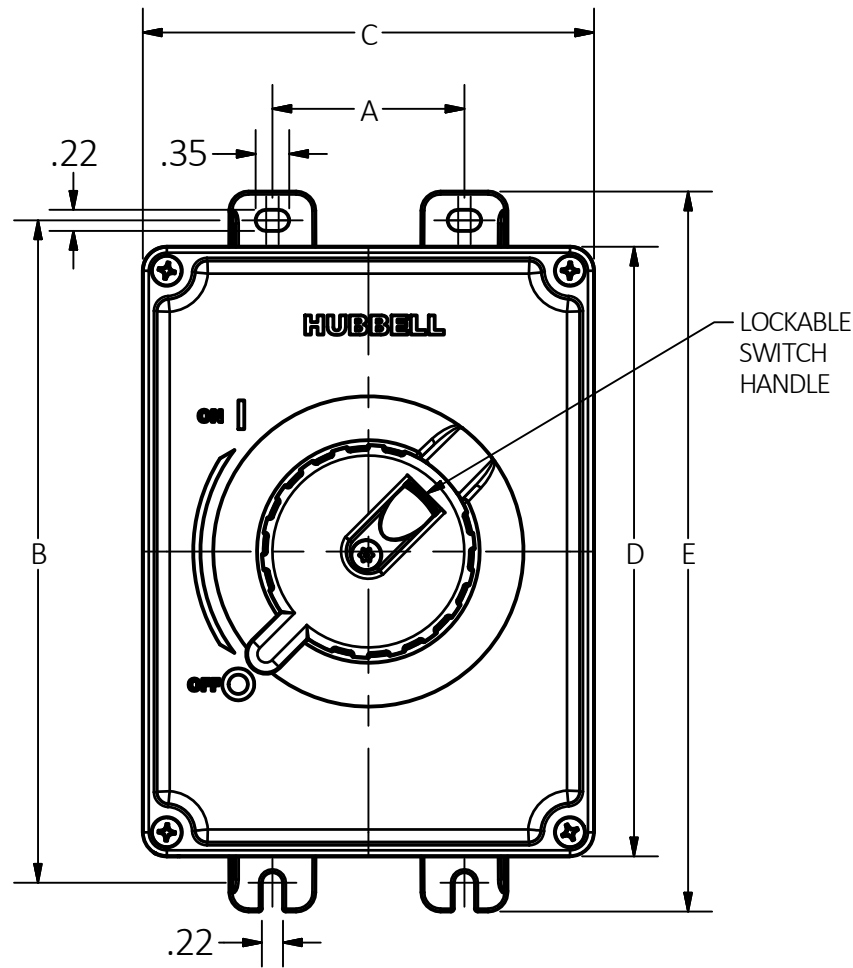
1



MD30



MD30XL & MD60



LIST OF PARTS

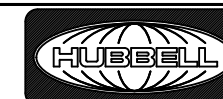
DESCRIPTION	MATERIAL	FINISH
COVER	POLYCARBONATE	LIGHT GRAY
BASE	POLYCARBONATE	LIGHT GRAY
HANDLE ASSY.	POLYCARBONATE	YELLOW
ASSY. SCREWS	STAINLESS STEEL	

DIMENSION SHEET FOR CAT. NO. MD30, MD30XL, MD60

1	INITIAL RELEASE PER DCN 22241	TLS	8/3/2015
REV	DESCRIPTION	APP	DATE

THE DESIGN AND DIMENSIONS OF THE PRODUCT SHOWN ON THIS DRAWING ARE SUBJECT TO CHANGE WITHOUT NOTICE. DIMENSIONS ARE IN INCHES [mm].

TITLE
CUSTOMER DRAWING, HUBBELL PRO MOTOR DISCONNECT SWITCH



WIRING DEVICE-KELLEMS
HUBBELL INCORPORATED
SHELTON, CT

TOLERANCES UNLESS OTHERWISE SPECIFIED .XX = ±.01 .XXX = ±.005 ANGLE TOL. ±2'	DR. BY MAM	SCALE NTS
	CHK. BY TLS	DATE 7/22/2016

CAT. NO.	DIM A	DIM B	DIM C	DIM D	DIM E	DIM F	DIM G	GIM H
MD30	2.00 (51 mm)	7.00 (178 mm)	4.70 (119 mm)	6.35 (161 mm)	7.50 (191 mm)	1.75 (44.5 mm)	2.05 (52 mm)	1.15 (29 mm)
MD30XL & MD60	3.50 (89 mm)	9.50 (241 mm)	6.00 (152 mm)	8.90 (226 mm)	10.00 (254 mm)	2.25 (57 mm)	3.00 (76 mm)	1.50 (38 mm)

MD30 & MD30XL - RATED 30A, 600 VAC MAX			
3ØVAC	240	480	600
HP	7.5	15	15

MD60 - RATED 60A, 600 VAC MAX			
3ØVAC	240	480	600
HP	20	40	40