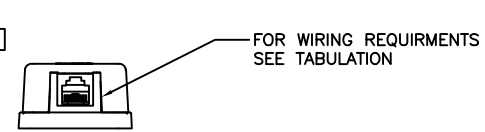
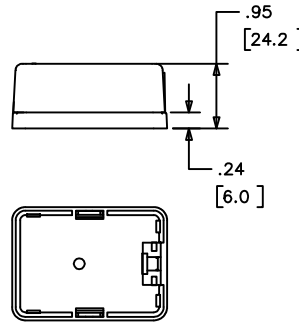
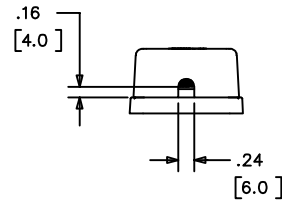
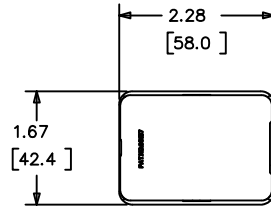
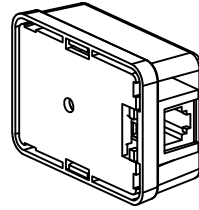



CATALOG	DESCRIPTION	COLOR
NS760I	6 POSITION, 4 CONDUCTOR	IVORY
NS760W	6 POSITION, 4 CONDUCTOR	WHITE
NS761I	6 POSITION, 6 CONDUCTOR	IVORY
NS761W	6 POSITION, 6 CONDUCTOR	WHITE

NOTE:

- KIT SHOULD INCLUDE:
 - #6-20 x .75" TRUSS HEAD TAPPING SCREW ASA TYPE A (SHIPPED INSIDE THE ASSEMBLY)
 - DOUBLE SIDED STICKER - 2.36" X 1.65" X .06"



Created on AUTOCAD	DIMENSIONING AND TOLERANCE PER ANSI Y14.5M-1982 UNLESS OTHERWISE SPECIFIED, DIMENSIONS ARE IN INCHES (MM). TOLERANCES: .XX = ±.01 (.25) .XXX = ±.005 (.127) .XXXX = ±.0025 (.0635) ANGLE TOL ±1°		PROJECT REFERENCE:		 Hubbell Premise Wiring HUBBELL INCORPORATED (Delaware) 14 Lord's Hill Road, Storington, Connecticut 06378
			MATERIAL:		
	IN ACCEPTING OUR DRAWINGS, BLUEPRINTS, OR SUPPORTING DOCUMENTATION FOR QUOTATION OR OTHER PURPOSES, YOU AGREE NOT TO DISCLOSE TO OTHERS THE IDEAS, INFORMATION, OR DESIGNS SHOWN HEREIN, AND THAT YOU WILL MAKE NO USE OF SAME WITHOUT PERMISSION		DRAWN BY: N.RICHARDS 03/27/06		TITLE: NETSELECT SURFACE JACK
			CHECKED BY:		SIZE: DRAWING NO. C CHWS12216
		APPROVED BY:		SCALE: FULL SHEET 1 OF 1	

REV.	ECN	DATE	DESCRIPTION	CHG BY	APPD BY
A	5813	02/27/06	INITIAL RELEASE	NJR	

A